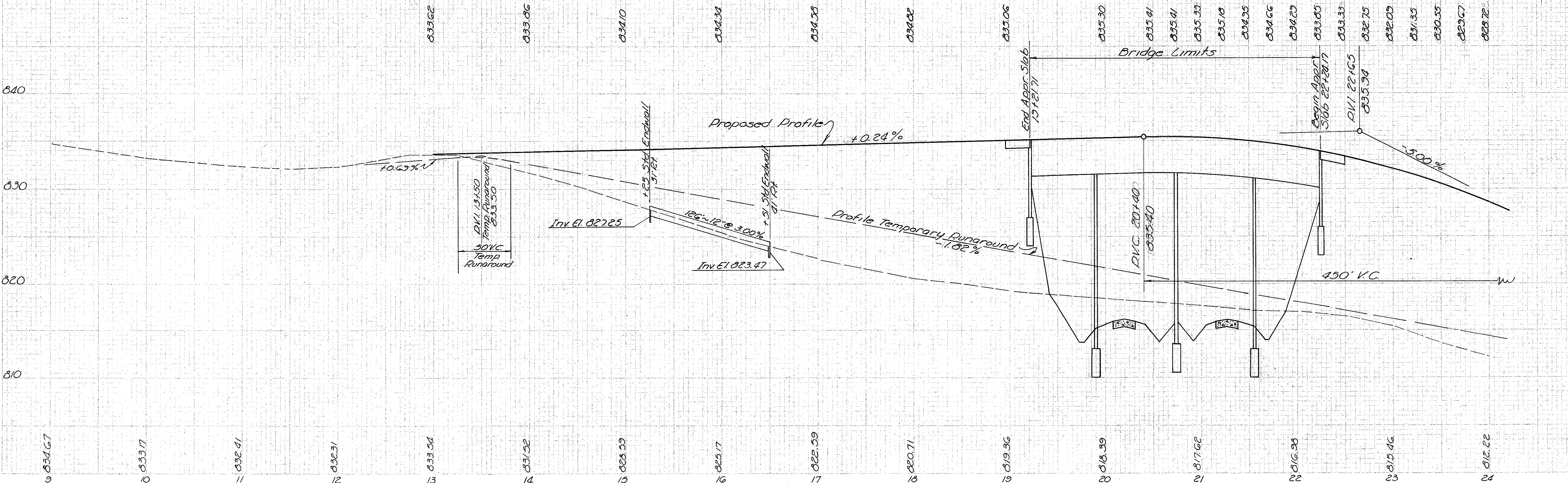


**(A) DRIVES & APPROACHES**

Ref. No.	Station	Side	Type	Width	T-35	B-119	B-119
					2"	5"	8"
1-A	13+01	Lt.	MB	12	1.7	4.3	
2-A	13+71	Rt.	Res	12	4.8	12.0	7.4
3-A	15+71	Lt.	MB	12	1.7	4.3	
Totals					8.2	20.6	7.4

**(C) GUARD RAIL, I-15**

Ref. No.	Station	Side	Wire Cable
1-G	17+43.8	19+03.8	Lt. 160.0
2-G	21+37.1	24+00	Lt. 162.9
3-G	16+52.8	19+08.8	Rt. 256.0
4-G	22+42.1	24+00	Rt. 157.3
Total			736.3



PLAN & PROFILE COUNTY LINE RD. 9+00 - 24+00