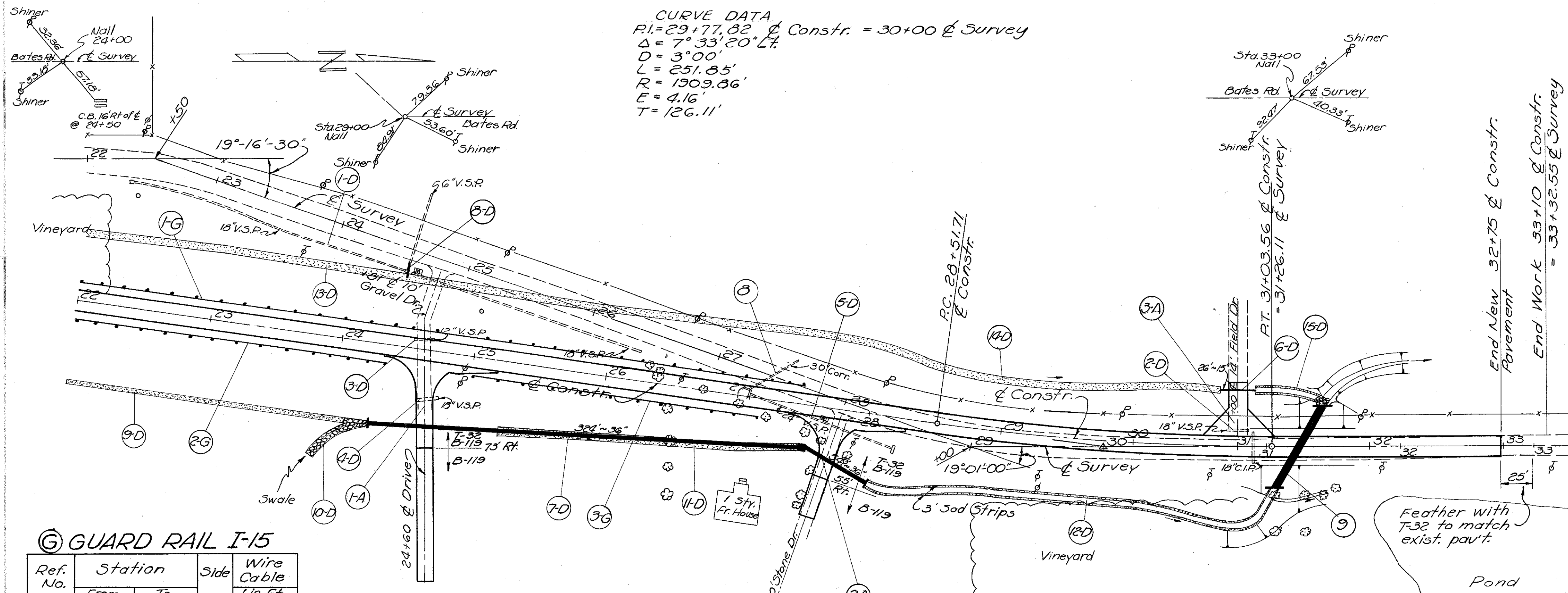


CURVE DATA  
 R1 = 29+77.82 & Constr. = 30+00 & Survey  
 $\Delta = 7^{\circ}33'20''$  LT  
 $D = 3^{\circ}00'$   
 $L = 251.85'$   
 $R = 1909.86'$   
 $E = 4.16'$   
 $T = 126.11'$



(A) DRIVES & APPROACHES

Ref No.	Station	Side	Type	Width	T-32 No. 46 Aggreg. Rd. Mix. Cu. Yd.	T-32 Bitum. Mater. Rd. Mix. Gal.	T-32 No. 6 or 9 Aggreg. Choke Cu. Yd.	T-32 No. 6 Bitum. Mater. Seal. Gal.	B-119 5" Crushed Aggreg. Base Course Cu. Yd.	B-119 4" Subbase Cu. Yd.	B-119 3" Bitum. Prime Coat Gal.	B-119 Compacted Subgrade Sq. Yds.	B-119 Reinforced Concrete Approach Slabs Sq. Yds.
* 1-A	24+60	RT	Field	12'	7.6	121.5	0.6	1.1	33.8	59.6			
* 2-A	27+80	RT	Field	12'	6.1	97.2	0.4	0.9	27.0	33.1			
* 3-A	30+78	LT	Field	14'									17.8
Totals					13.7	218.7	1.0	2.0	60.8	92.7			17.8

\* & Constr. Station

Note: Exist. topography is plotted on & Survey Stationing  
 Exist. & Proposed profiles are plotted on & Constr. Stationing

(C) GUARD RAIL I-15

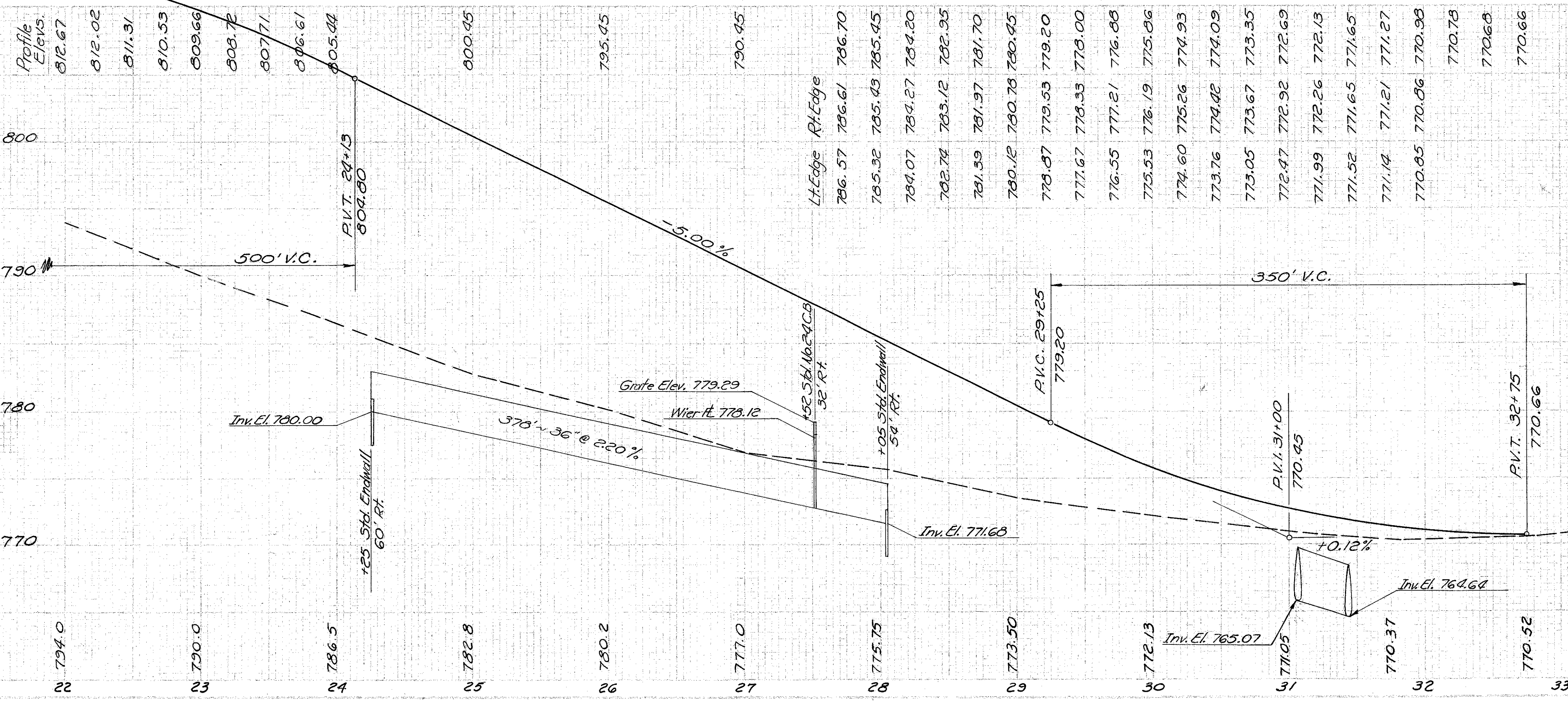
Ref. No.	Station	Side	Wire Cable Lin. Ft.
1-G	22+00 to 27+50	LT	550.0
2-G	22+00 to 24+35.6	RT	235.6
3-G	24+93 to 27+17	RT	224.0
Total			1009.6

ESTIMATED QUANTITIES

Item	Description	Unit	Quantity
T-32	No. 46 Aggregate for Road Mix.	Cu. Yds.	179.7
T-32	Bituminous Material for Road Mix.	Gals.	2088.1
T-32	No. 6 or 9 Aggregate for Choke	Cu. Yds.	12.9
T-32	No. 6 Aggregate for Seal Coat	Cu. Yds.	25.7
T-32	Bituminous Material for Seal Coat	Gals.	802.3
B-119	5" Crushed Aggregate Base Course	Cu. Yds.	473.5
I-22	4" Subbase	Cu. Yds.	426.0
T-30	Bituminous Prime Coat	Gals.	1123.2
E-10	Compacted Subgrade	Sq. Yds.	3363
I-7	Reinforced Concrete Approach Slabs	Sq. Yds.	154

STRUCTURES 20' SPAN & UNDER

Str. No.	Station	Proposed Type	Size	Length	Details on Sheet	Remarks
8	27+08	AS	72x44	76	86	524 Removal
9	31+25	AS	72x44	76	86	



DRAINAGE

Ref. No.	Station	Side	E-12		F-1		F-2		F-3		F-4		F-5		F-6		F-7	
			From	To	15" Pipe for Driveways	15" Pipe for Storm Sewer	6" Pipe for Storm Sewer	6" Pipe for Storm Sewer	6" Pipe for Storm Sewer	6" Pipe for Storm Sewer	6" Pipe for Storm Sewer	6" Pipe for Storm Sewer	6" Pipe for Storm Sewer	6" Pipe for Storm Sewer	6" Pipe for Storm Sewer	6" Pipe for Storm Sewer	6" Pipe for Storm Sewer	6" Pipe for Storm Sewer
1-D	22+92	LT	26+24	LT	408													
2-D	30+70	LT	30+85	LT	15													
3-D	24+54	LT	24+69	LT	14													
4-D	24+60	RT	24+75	RT	16													
5-D	27+09	RT	28+21	RT	114													
6-D	30+65	LT	30+91	LT		26												
7-D	24+25	RT	28+05	RT			378											118*
8-D	24+43	LT		LT														
9-D	22+00	RT	24+10	RT														
10-D	23+90	RT	24+25	RT														
11-D	25+25	RT	27+52	RT														
12-D	28+05	RT	31+07	RT														
13-D	22+00	LT	26+00	LT														
14-D	26+00	LT	30+65	LT														
15-D	30+91	LT	31+47	LT														
Totals					561	26	378	10	1	3	52	404	988	118				

\* Note: Endwall per Std. Const. Dwg. 5-27 P.C. 4