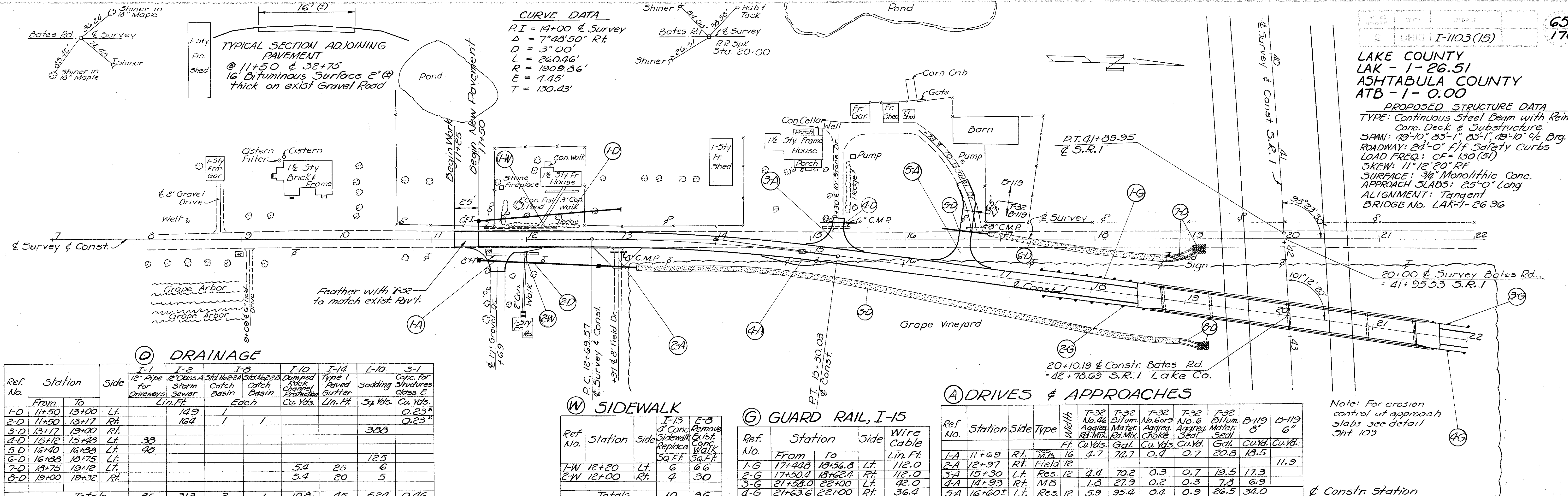


LAKE COUNTY
LAK - 1-26.51
ASHTABULA COUNTY
ATB - 1-0.00

PROPOSED STRUCTURE DATA
TYPE: Continuous Steel Beam with Reinf.
Conc. Deck & Substructure
SPAN: 49'-10" 83'-1" 83'-10" % Brg.
ROADWAY: 24'-0" f/f Safety Curbs
LOAD FREQ.: CF = 130 (51)
SKEW: 11°12'20" RF
SURFACE: 3/4" Monolithic Conc.
APPROACH SLABS: 25'-0" Long
ALIGNMENT: Tangent
BRIDGE No. LAK-1-26.96

CURVE DATA
P.I. = 14+00 & Survey
Δ = 7°48'50" Rt.
D = 3°00'
L = 260.46'
R = 1909.86'
E = 4.45'
T = 130.43'

TYPICAL SECTION ADJOINING PAVEMENT
@ 11+50 & 32+75
16 Bituminous Surface 2" (4) thick on exist Gravel Road



(D) DRAINAGE

Ref. No.	Station	Side	I-1		I-2		I-3		I-10		I-14		L-10		S-1	
			From	To	12" Pipe for Storm Drain	12" Class A Storm Sewer	Std. No. 22-A	Std. No. 22-B	Dumped Rock Channel Protection	Type 1 Paved Gutter	Sodding	Conc. for Structures	Class E	Cu. Yds.	Sq. Yds.	Cu. Yds.
1-D	11+50	Lt.	11+50	13+00		149										0.23*
2-D	11+50	Rt.	11+50	13+17		164										0.23*
3-D	13+17	Rt.	13+17	19+00												388
4-D	15+12	Lt.	15+12	15+43		33										
5-D	16+40	Lt.	16+40	16+49		9										
6-D	16+48	Lt.	16+48	18+75					5.4	25			125			
7-D	18+75	Lt.	18+75	19+12					5.4	20			5			
8-D	19+00	Rt.	19+00	19+32												
Totals					86	313	2	1	10.8	45	524	0.46				

* Note: Endwalls per Std. Const. Dwg 5-27 P.C.1

(W) SIDEWALK

Ref. No.	Station	Side	I-13		E-8	
			1' Conc. Sidewalk	Remove Sidewalk	Replace Walk	Copy
1-W	12+20	Lt.	6	6		
2-W	12+00	Rt.	7	30		
Totals			10	36		

Replace Conc. Walk to Const. Limits

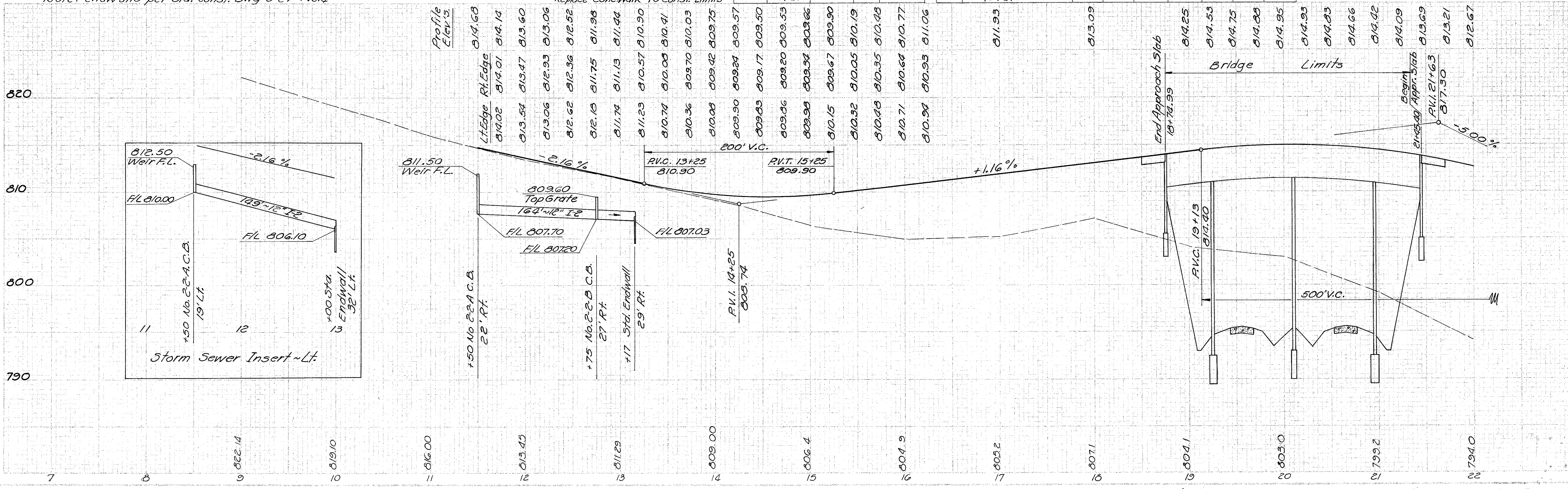
(G) GUARD RAIL, I-15

Ref. No.	Station	Side	Wire Cable	
			From	To
1-G	17+44.8	Lt.	17+44.8	18+56.8
2-G	17+50.4	Rt.	17+50.4	18+62.4
3-G	21+58.0	Lt.	21+58.0	22+100
4-G	21+63.6	Rt.	21+63.6	22+100
Total			302.4	

(A) DRIVES & APPROACHES

Ref. No.	Station	Side	Type	Width	T-32		T-32		T-32		T-32		T-32		B-119		B-119	
					No. 46 Aggr. Rel. Mix.	Bitum. Mater. Gal.	No. 6099 Aggr. Choke	Bitum. Mater. Gal.	No. 6 Aggr. Seal	Bitum. Mater. Gal.	No. 6 Aggr. Seal	8"	Cu. Yd.	6"	Cu. Yd.			
1-A	11+69	Rt.	Field	16	4.7	74.7	0.4	0.7	19.5	17.3								
2-A	12+97	Rt.	Field	12														
3-A	15+30	Lt.	Res.	12	4.4	70.2	0.3	0.7	7.8	6.9								
4-A	14+93	Rt.	MB	12	1.8	27.9	0.2	0.3	7.8	6.9								
5-A	16+60	Lt.	Res.	12	5.9	95.4	0.4	0.9	26.5	34.0								
Totals					16.8	268.2	1.3	2.6	74.6	76.7	11.9							

Note: For erosion control at approach slabs see detail Sht. 103



PLAN & PROFILE BATES RD. 7+00 - 22+00