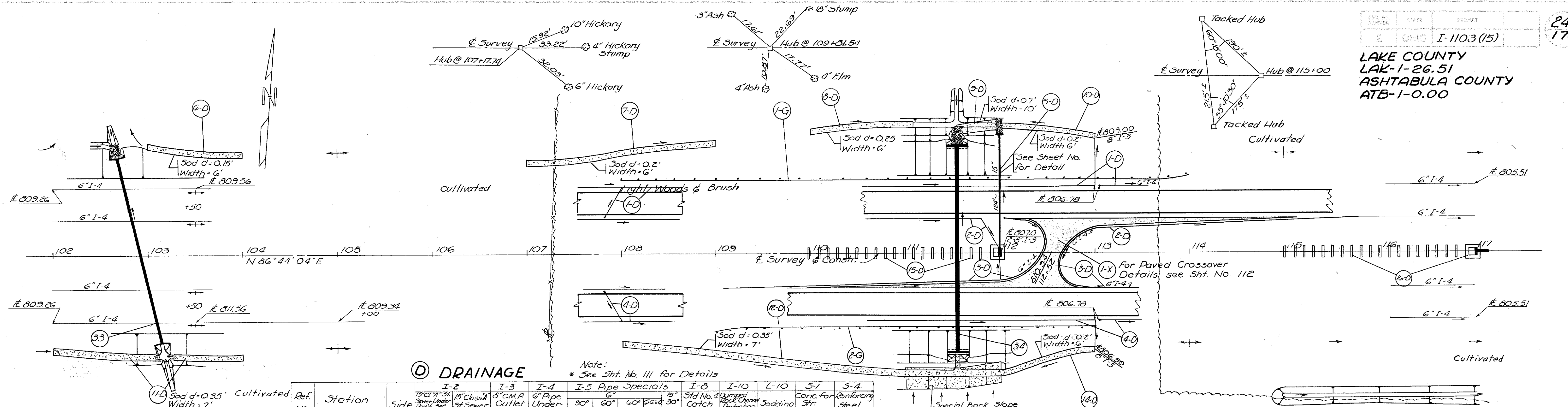


LAKE COUNTY
LAK-1-26.51
ASHTABULA COUNTY
ATB-1-0.00



DRAINAGE

Note: * See Sht. No. 111 for Details

Ref. No.	Station	Side	I-5 Pipe Specials														
			I-2	I-3	I-4	I-5			I-8	I-10	L-10	S-1	S-4				
			15' Class A 5' Sewer	8" C.M.P. Outlet Pipe	6" Pipe Under-Drains	30" Bend	60" Bend	60" Wye	30" Tee	15" Std. No. 40 Catch Basin	4' Dumped Rock Channel Protection	Sodding	Conc. for Str. Class C	Reinforcing Steel			
			Sec. Mch.	Lin. Ft.	Each	Each	Each	Each	Each	Cu. Yds.	Sq. Yds.	Cu. Yds.	Lbs.				
1-D	102+00	117+00	71' Lt.		10	1571											
2-D	102+00	117+00	37' Lt.		10	1452											
3-D	102+00	117+00	37' Rt.		10	1592											
4-D	102+00	117+00	71' Rt.		10	1553											
5-D	112+00		Lt.	88	36				2	1	16		32	146			
6-D	103+00	104+00	Lt.											67			
7-D	107+00	109+00	Lt.											134			
8-D	110+00	111+10	Lt.											74			
9-D	111+57	112+00	Lt.											48			
10-D	112+00	113+00	Lt.											67			
11-D	102+00	104+00	Rt.											148			
12-D	108+00	111+00	Rt.											234			
13-D	111+00	112+00	Rt.											245			
14-D	112+00	113+00	Rt.											67			
15-D	110+00	112+00	Med.											53			
16-D	115+00	117+00	Med.											53			
Totals				88	36	40	6168	2	1	2	1	2	1	16	1190	32	146

STRUCTURES 20' SPAN & UNDER

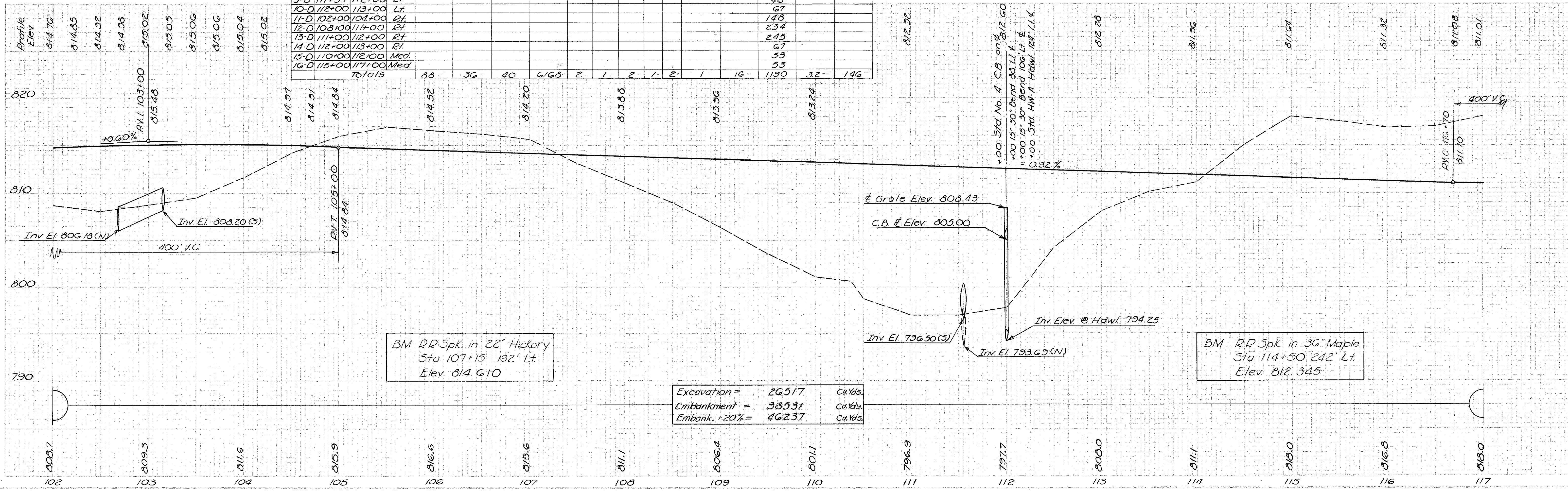
Str. No.	Station	Proposed Type	Size	Lgh	Details on Sheet
33	102+92	Pipe	30"	202	106
34	111+53	Pipe	48"	216	107

MEDIAN CROSSOVER PAVEMENT

Ref. No.	Station	E-1 Compod Subgrl	7-31 No. 4G Aggreg.		7-31 Bitum. Aggreg. Mater.		B-33 3"	I-15 5"	I-22 6"
			Sq. Yd.	Cu. Yd.	Sq. Yd.	Cu. Yd.			
1-G	108+00	473	3.8	3.8	236.6	473	70.6	108.5	
2-G	109+00								
Total								1000	

GUARD RAIL I-15

Ref. No.	Station	Side	Steel Beam Type (Depth)	
			From	To
1-G	108+00	114+00	Lt.	600'
2-G	109+00	113+00	Rt.	400'
Total				1000



BM RR Spk. in 22" Hickory
Sta 107+15 192' Lt.
Elev. 814.610

BM RR Spk. in 36" Maple
Sta 114+50 242' Lt.
Elev. 812.345

Excavation =	26517	Cu. Yds.
Embankment =	38531	Cu. Yds.
Embank. +20% =	46237	Cu. Yds.