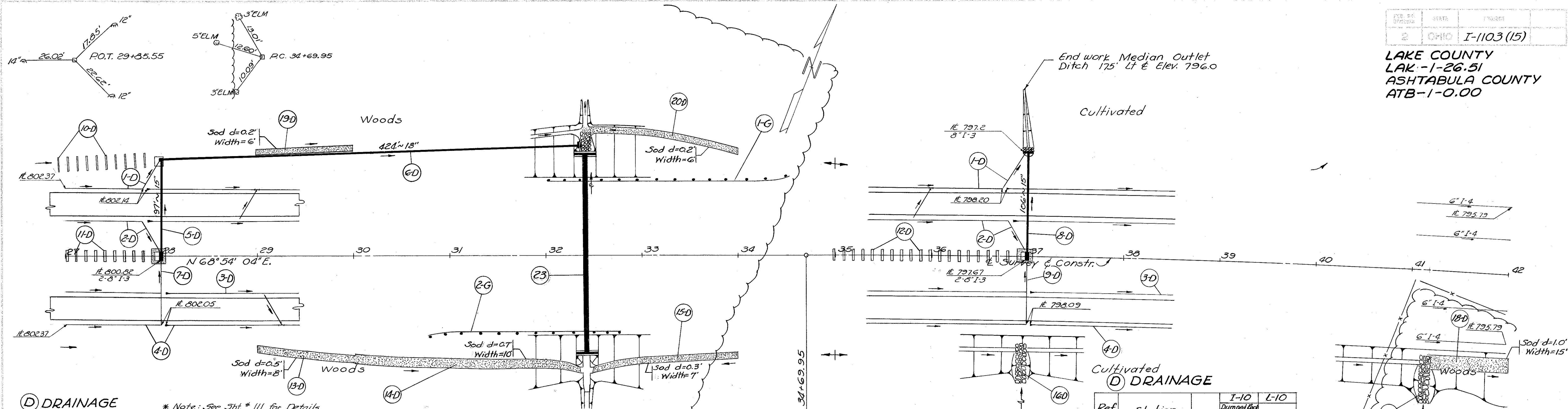


LAKE COUNTY  
LAK-1-26.51  
ASHTABULA COUNTY  
ATB-1-0.00



**(D) DRAINAGE**

\* Note: See Sht. # 111 for Details

Ref No	Station	Side	I-2		I-3		I-4		I-5			I-8		I-10		
			Class A Storm Sewer	18" C.I.P. Storm Sewer	6" C.M.P. Underdrain	6" Pipe	60° Bend	90° Bend	60° Bend	6" Increaser	8"x8"x6" Tee	Std. No. 4 Catch Basin	Std. No. 5 Catch Basin	Conc. for Structures	Reinf. Steel	
			Each													
			Lin. Ft.											Cu. Yds.	Lbs.	
1-D	27+00	42+00	71' Lt.		20	1622	2	2								
2-D	27+00	42+00	37' Lt.		20	1534	2									
3-D	27+00	42+00	37' Rt.			1492										
4-D	27+00	42+00	71' Rt.			1529		1								
5-D	28+00		Lt.	97							1					
6-D	28+00	32+25	Lt.		484							1	3.2	146		
7-D	28+00		Rt.	56'		10										
8-D	37+00		Lt.		106			1					3.2	146		
9-D	37+00		Rt.	56'		10										
<b>Totals</b>				112	203	424	60	6197	4	2	3	2	2	1	6.4	292

**STRUCTURES 20' SPAN & UNDER**

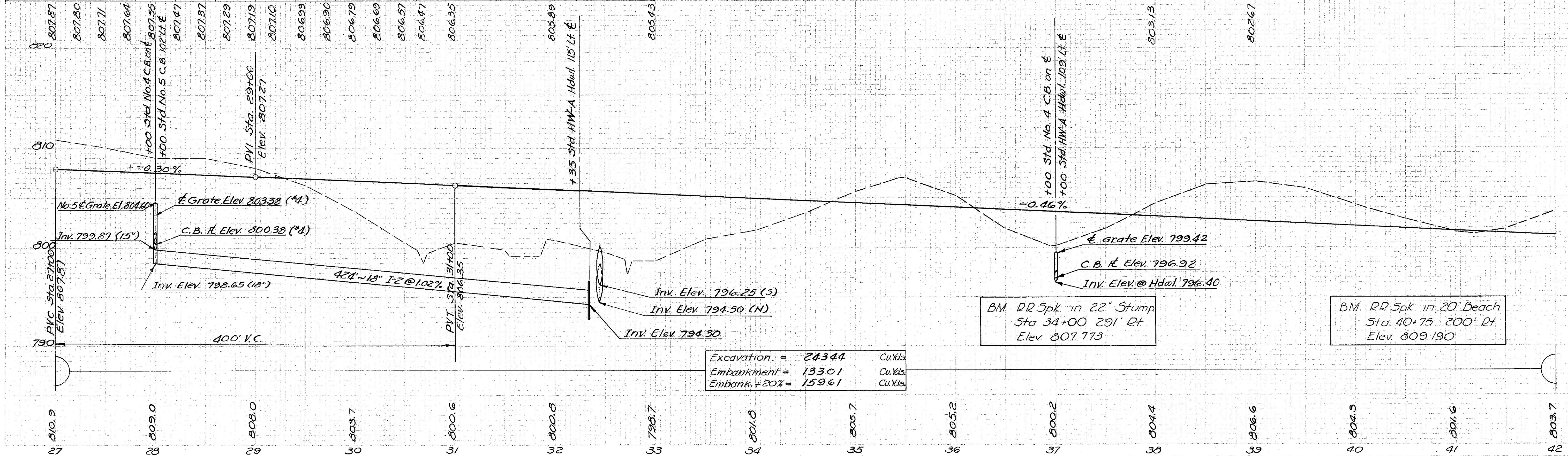
Str. No.	Station	Proposed Type	Size	Lgn.	Detail on Sheet
23	32+41	Pipe	42"	206'	99

**(O) DRAINAGE**

Ref. No.	Station	Side	I-10		
			Dumped Box Channel Protection	Sodding	
			Cu. Yds.	Sq. Yds.	
10-D	27+00	28+00	Lt	23	
11-D	27+00	28+00	Med.	30	
12-D	35+00	37+00	Med.	53	
13-D	29+00	30+00	Rt.	89	
14-D	30+00	32+36	Rt.	262	
15-D	32+49	34+00	Rt.	118	
16-D	36+95		Rt.	27	
17-D	41+18		Rt.	33	
18-D	41+24	42+00	Rt.	127	
19-D	29+00	30+00	Lt.	67	
20-D	32+40	34+00	Lt.	107	
<b>Totals</b>				60	876

**(G) GUARD RAIL, I-15**

Ref. No.	Station		Side	Steel Beam Type (Depth)	Lin. Ft.
	From	To			
1-G	32+04	34+54	Lt.	250	
2-G	30+78	32+78	Rt.	200	
<b>Total</b>					450



Excavation =	24344	Cu. Yds.
Embankment =	13301	Cu. Yds.
Embank. +20% =	15961	Cu. Yds.