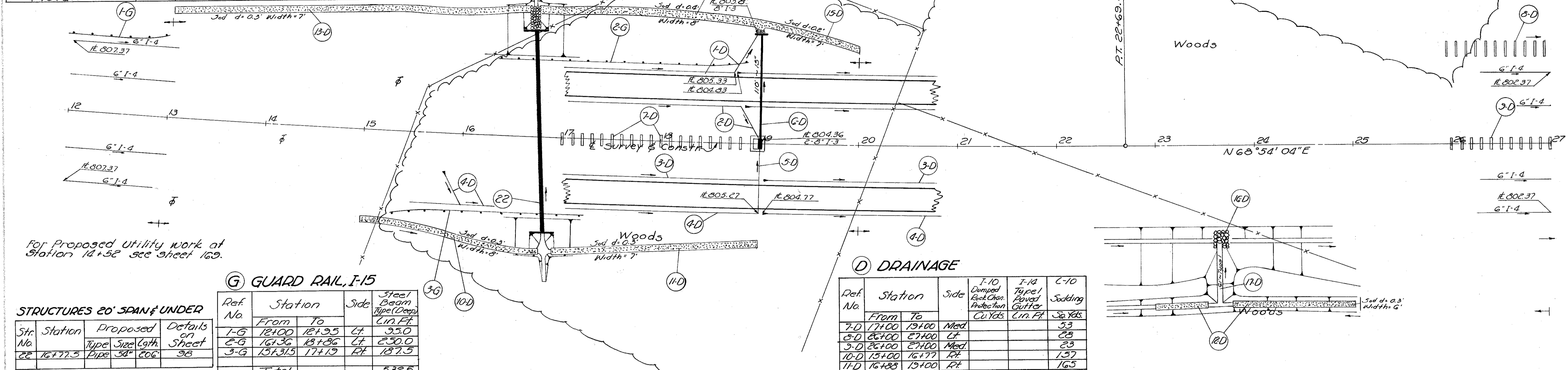


**DRAINAGE**

\* Note: See Sht. # 111 for Details

Ref No.	Station		Side	I-2		I-3		I-4		I-5 Pipe Specials				I-8	S-1	S-4
	From	To		Class A Storm Sewer Under 4" dia. 6" dia. 8" dia.	8" CMD Outlet Pipe	6" Pipe Under	6" 8" Increase	60° Bend	30° Bend	60° Wye	8" x 8" Tee	Stk. No. Catch Basin	Concrete for Street Class C-1			
1-D	12+00	27+00	LT		10	1534		1								
2-D	12+00	27+00	RT		10	1527		1								
3-D	12+00	27+00	RT			14.96										
4-D	12+00	27+00	RT			1532										
5-D	19+00	27+00	LT	56	10								1	3.2	146	
6-D	19+00	27+00	RT													
<b>Totals</b>				56	110	30	6089	1	2	1	1	1	1	3.2	146	

LAKE COUNTY  
LAK-1-26.51  
ASHTABULA COUNTY  
ATB-1-0.00



For proposed utility work at Station 14+58 see sheet 169.

**GUARD RAIL, I-15**

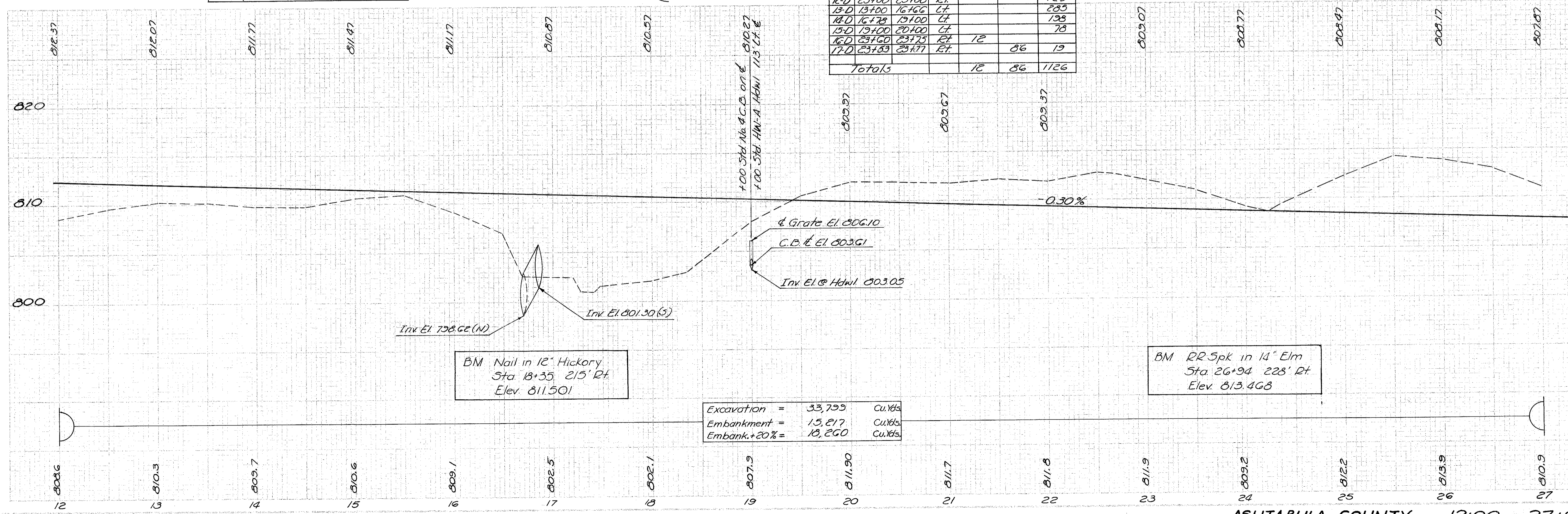
STRUCTURES 20' SPAN & UNDER

Str. No.	Station	Proposed Type	Size	Length	Details on Sheet
1-G	12+00	12+35	LT	35.0	
2-G	16+36	18+86	LT	250.0	
3-G	15+31.5	17+19	RT	187.5	
<b>Total</b>					532.5

Ref No.	Station	Side	Steel Beam Type (Depth)	Lin. Ft.	
1-G	12+00	12+35	LT	35.0	
2-G	16+36	18+86	LT	250.0	
3-G	15+31.5	17+19	RT	187.5	
<b>Total</b>					532.5

**DRAINAGE**

Ref No.	Station		Side	I-10 Dumped Rock Chan. Protection	I-14 Type 1 Paved Gutter	C-10 Sodding	
	From	To					Cu. Yds.
7-D	17+00	19+00	Med.			53	
8-D	26+00	27+00	LT			23	
9-D	26+00	27+00	Med.			23	
10-D	15+00	16+77	RT			157	
11-D	16+28	19+00	RT			165	
12-D	23+00	25+00	LT			120	
13-D	13+00	16+66	LT			285	
14-D	16+28	19+00	LT			138	
15-D	19+00	20+00	LT			78	
16-D	23+00	23+75	RT	12			
17-D	23+00	23+77	RT		86	19	
<b>Totals</b>							1126



Excavation =	33,799	Cu. Yds.
Embankment =	15,217	Cu. Yds.
Embank.+20% =	18,260	Cu. Yds.

BM RR Spk in 14" Elm  
Sta. 26+94 228' Rt.  
Elev. 813.468