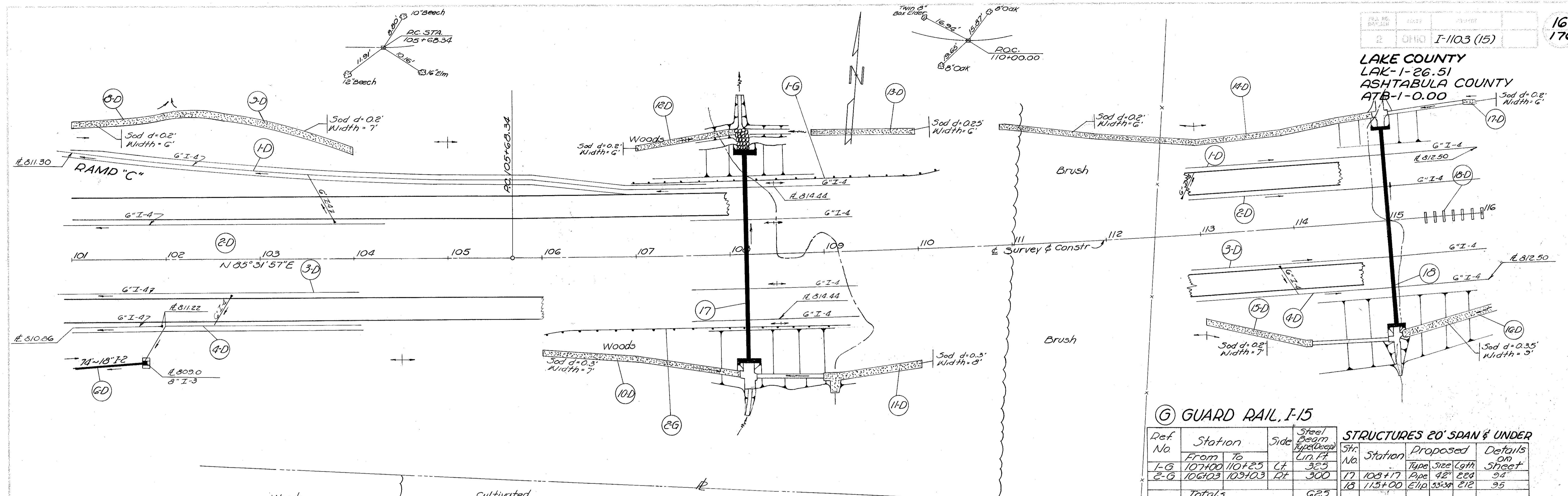
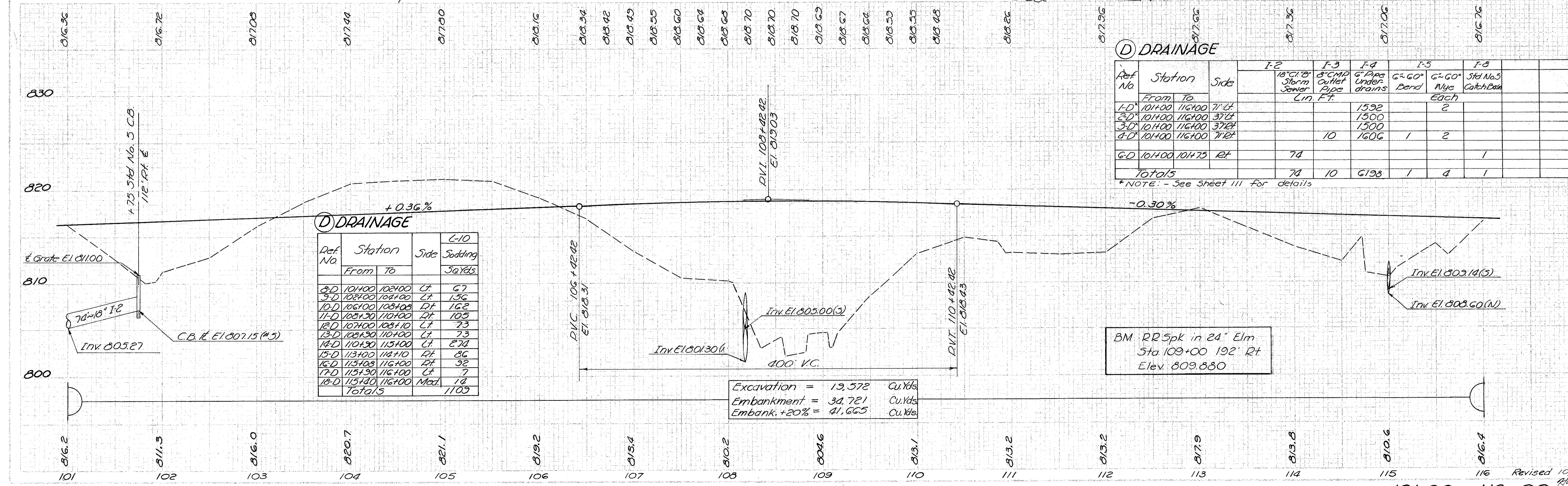


LAKE COUNTY
LAK-1-26.51
ASHTABULA COUNTY
ATB-1-0.00



G GUARD RAIL, I-15

Ref No	Station		Side	Steel Beam Type/Depth Lin. Ft.	STRUCTURES 20' SPAN & UNDER		Details On Sheet
	From	To			Str. No.	Station	
I-G	107+00	110+25	Lt	325	17	105+17 Pipe 42" 224	94
E-G	106+03	109+03	Rt	300	18	115+00 E110 33334 212	95
Totals				625			



D DRAINAGE

Ref No	Station		Side	L-10 Sodding Sq.Yds.
	From	To		
3-D	101+00	102+00	Lt	67
5-D	102+00	104+00	Lt	156
10-D	106+00	108+03	Rt	162
11-D	108+30	110+00	Rt	105
12-D	107+00	108+10	Lt	73
13-D	108+30	110+00	Lt	73
14-D	110+30	115+00	Rt	274
15-D	113+00	114+10	Lt	86
16-D	115+03	116+00	Rt	32
17-D	115+30	116+00	Lt	7
18-D	115+00	116+00	Med	14
Totals				1103

D DRAINAGE

Ref No	Station		Side	I-2	I-3	I-4	I-5	I-8	
	From	To		18" CL 18" Storm Sewer Lin. Ft.	8" CMP Outlet Pipe Lin. Ft.	6" Pipe Under drains	6"-60" Bend	6"-60" M/E Each	Std No.5 Catch Basin
I-D	101+00	116+00	Lt			1592		2	
E-D	101+00	116+00	Rt			1500			
3-D	101+00	116+00	Rt			1500			
4-D	101+00	116+00	Rt		10	1606	1	2	
G-D	101+00	104+75	Rt	74				1	
Totals				74	10	6198	1	4	1

*NOTE: - See Sheet III for details

Excavation = 13,572 Cu.Yds
Embankment = 34,721 Cu.Yds
Embank +20% = 41,665 Cu.Yds

BM RR 5pk in 24" Elm
Sta 109+00 192' Rt
Elev. 809.880