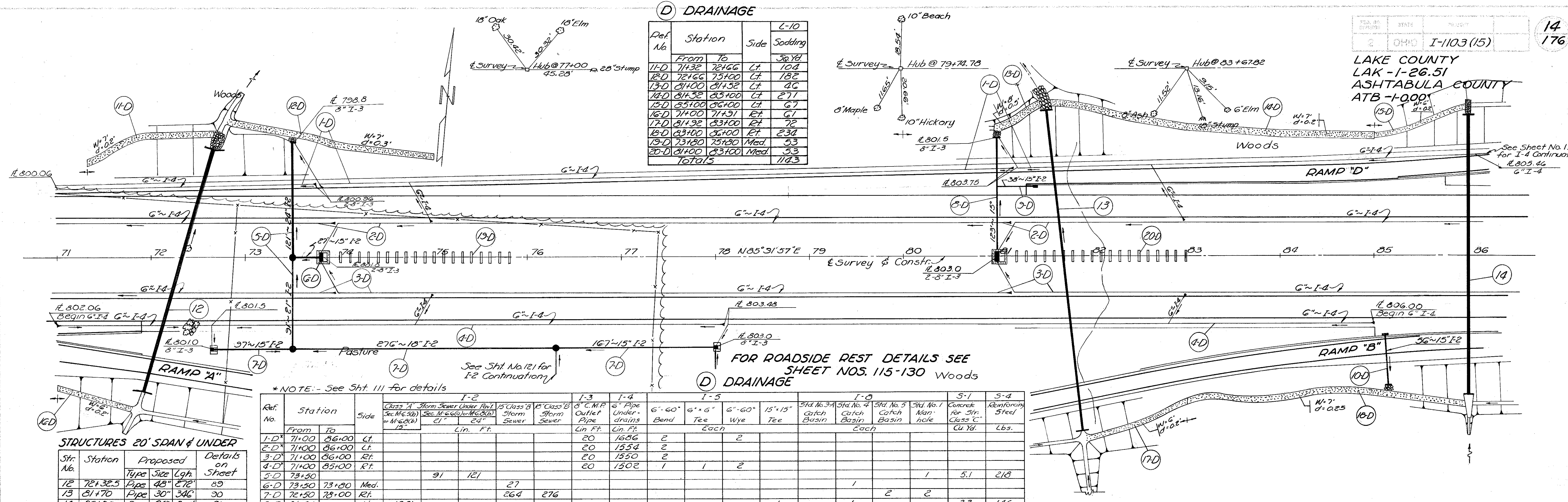


(D) DRAINAGE

Ref. No.	Station		Side	L-10 Sadding
	From	To		
11-D	71+32	72+66	Lt.	104
12-D	72+66	75+00	Lt.	182
13-D	81+00	81+52	Lt.	40
14-D	81+52	85+00	Lt.	271
15-D	85+00	86+00	Lt.	67
16-D	71+00	71+31	Rt.	61
17-D	81+32	83+00	Rt.	72
18-D	83+00	86+00	Rt.	234
19-D	73+80	75+80	Med.	53
20-D	81+00	83+00	Med.	53
Totals				1103

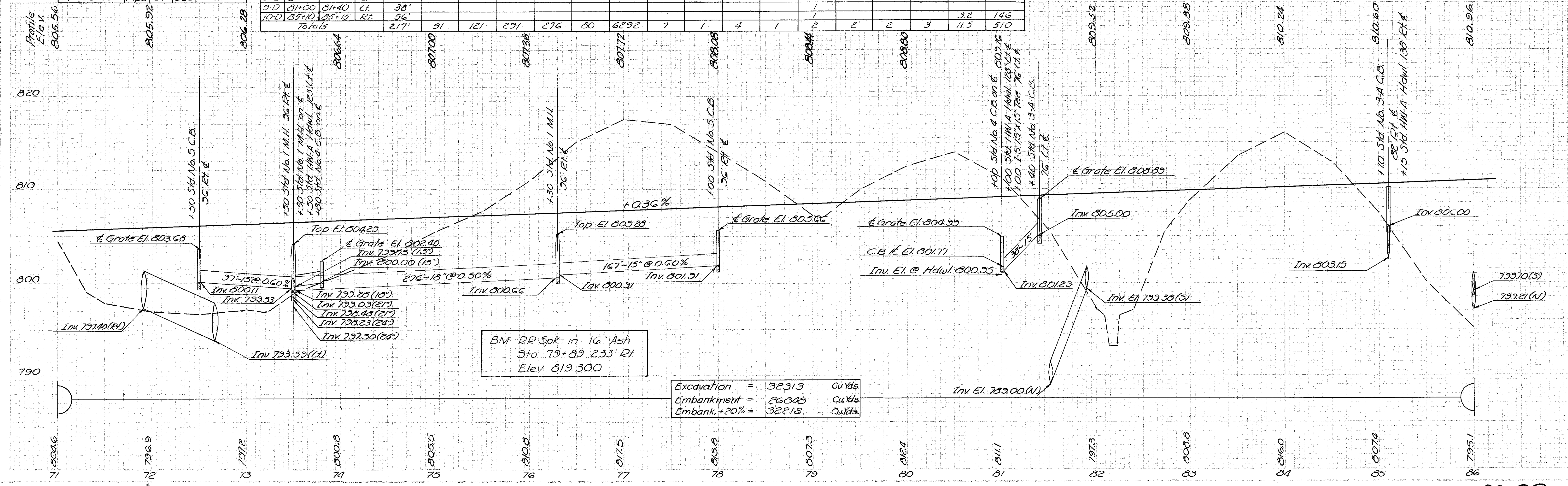


*NOTE: - See Sht. 111 for details

Ref. No.	Station		Side	I-2		I-3		I-4		I-5		I-6		I-7		I-8				
	From	To		Class A Storm Sewer Under Pavt. Sec. No. 300 or M.C. 20 15"	Sec. M.C. 20 (15")	15" Class A Storm Sewer	15" Class B Storm Sewer	8" C.M.P. Outlet Pipe	6" Pipe Under-drains	6" x 6" Bend	6" x 6" Tee	6" x 6" Wye	15" x 15" Tee	Std. No. 3A Catch Basin	Std. No. 4 Catch Basin	Std. No. 5 Catch Basin	Std. No. 1 Man. hole	Concrete for Str. Class C	Reinforcing Steel	
				Lin. Ft.	Lin. Ft.	Lin. Ft.	Lin. Ft.	Lin. Ft.	Each	Each	Each	Each	Each	Each	Each	Cu Yd.	Lbs.			
1-D	71+00	86+00	Lt.					20	1686	2										
2-D	71+00	86+00	Lt.					20	1554	2										
3-D	71+00	86+00	Rt.					20	1550	2										
4-D	71+00	85+00	Rt.					20	1502	1	1	2								
5-D	73+50				91	121										1	5.1	218		
6-D	73+50	73+80	Med.				27													
7-D	72+50	73+00	Rt.				264	276												
8-D	81+00		Lt.	123'																
9-D	81+00	81+40	Lt.	38'																
10-D	85+10	85+15	Rt.	56'																
Totals				217'	91	121	291	276	80	6292	7	1	4	1	2	2	2	3	11.5	510

STRUCTURES 20' SPAN & UNDER

Str. No.	Station	Proposed Type	Size	Lgh.	Details on Sheet
12	72+32.5	Pipe	48"	272	89
13	81+70	Pipe	30"	346	90
14	86+00	Pipe	24"	300	91



BM RR Spk. in 16" Ash
Sta 79+89 233' Rt
Elev. 819.300

Excavation	=	32313	Cu Yds.
Embankment	=	26308	Cu Yds.
Embank. +20%	=	32218	Cu Yds.