

WOODS

STRUCTURES 20' SPAN & UNDER

Str. No.	Station	Proposed Type	Size	Lgh	Details on Sheet
11	59+58	Pipe	36"	234'	88

G GUARD RAIL, I-15

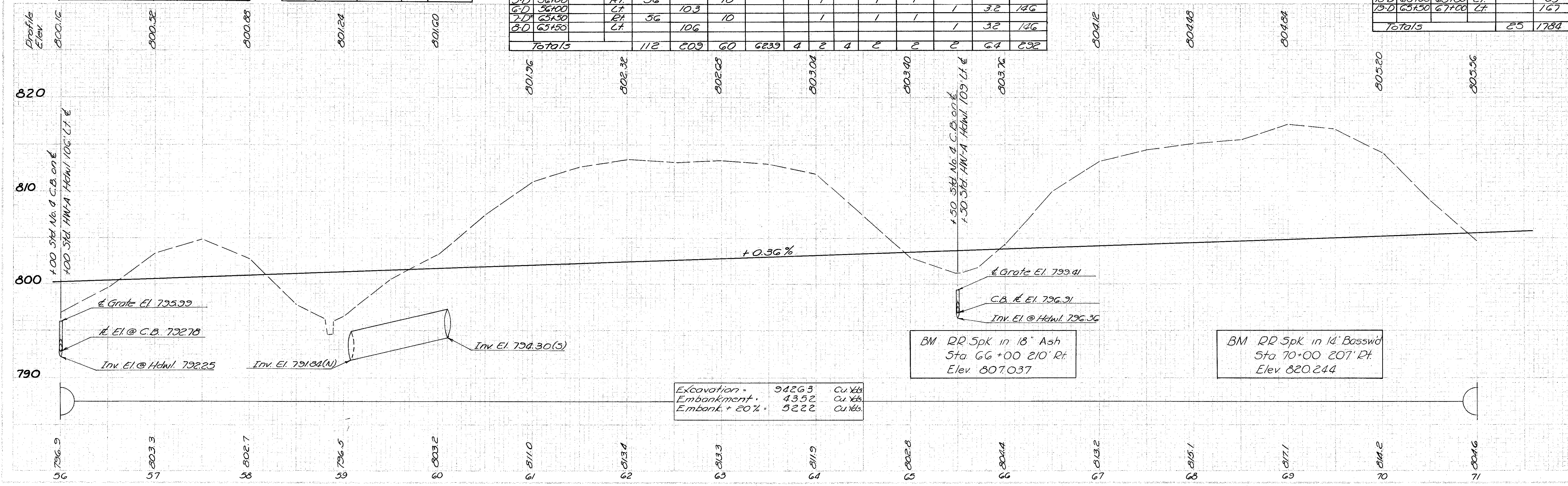
Ref. No.	Station		Side	Steel Beam Type (deep) Lin. Ft.
	From	To		
1-G	56+00	56+75	Lt.	75
2-G	58+72	60+72	Lt.	200
3-G	58+13	60+44	Rt.	225
Total				500

D DRAINAGE *NOTE--See Sheet III for details

Ref. No.	Station		Side	I-2		I-3		I-4		I-5			I-8		S-1		S-4	
	From	To		11" ST. Sewer U.P. Sec. M-G. 5(b) M.G. 6(a) 5" 15"	8" CMP Outlet Pipe	6" Pipe Under-drains	60° Bend	30° Bend	60° Wye	6" x 8" Tee	8" x 6" Tee	Std. Mod. Catch. Basin	Comp. for Struct. C.I. C.	Reinf. Steel	Cu. Yds.	Lbs.		
1-D	56+00	71+00	Lt.		20	1629	2	2										
2-D	56+00	71+00	Rt.		20	1534	2											
3-D	56+00	71+00	Rt.			1432												
4-D	56+00	71+00	Rt.			1564		2										
5-D	56+00		Rt.	56	10				1	1								
6-D	56+00		Rt.		10.3						1	3.2	146					
7-D	65+30		Rt.	56	10				1	1								
8-D	65+50		Lt.		106						1	3.2	146					
Totals				112	209	60	6239	4	2	4	2	2	64	292				

D DRAINAGE See Sheet III for I-4 Continuation

Ref. No.	Station		Side	I-10	L-10
	From	To			
9-D	65+50	67+50	Med.		53
10-D	56+00	58+00	Med.		53
11-D	56+00	57+00	Rt.		67
12-D	57+50	58+10	Lt.		40
13-D	59+05	60+00	Lt.		74
14-D	58+00	60+08	Lt.		185
15-D	60+12	61+00	Rt.		113
16-D	61+00	65+34	Rt.		388
17-D	65+34	66+06	Rt.	25	
18-D	65+00	65+50	Lt.		39
19-D	65+50	67+00	Lt.		167
Totals				25	1784



Excavation	942.63	Cu. Yds.
Embankment	43.52	Cu. Yds.
Embank. + 20%	52.22	Cu. Yds.