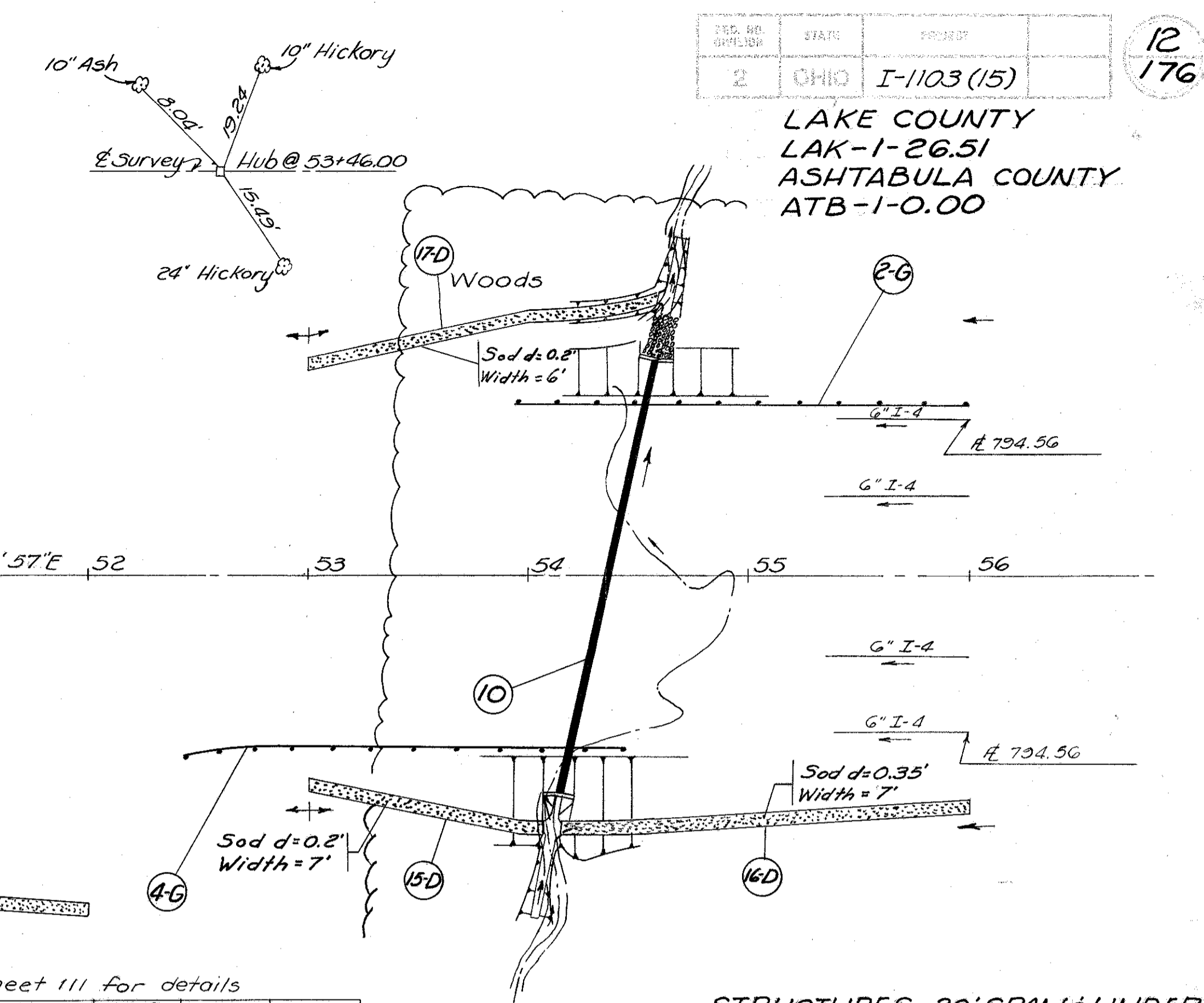


(D) DRAINAGE

Ref. No.	Station		Side	I-10 Dumped Rock Channel Protection Cu.Yds.	I-14 Type I Paved Gutter Lin.Ft.	L-10 Sodding Sq.Yds.
	From	To				
7-D	44+40	48+15	Med.			97
8-D	45+85	48+00	Lt.			215
9-D	45+00	46+12	Rt.			87
10-D	46+23	47+90	Rt.			241
11-D	48+00	48+12	Rt.		69	13
12-D	47+90	48+05	Rt.	12.3		
13-D	48+05	49+00	Rt.			84
14-D	50+90	52+00	Rt.			73
15-D	53+00	54+03	Rt.			80
16-D	54+18	56+00	Rt.			142
17-D	53+00	54+63	Rt.			109
Totals				12.3	69	1141



(D) DRAINAGE *NOTE: See Sheet III for details

Ref. No.	Station		Side	I-2 Class "A" Storm Sewer Under Pavt. Sec. M. & A. (M. & A.) 8" 15'	I-3 8" CMP Outlet Pipe Lim. Ft.	I-4 6" Pipe Under- drain Lim. Ft.	I-5 Pipe Specials				I-8 Std. No. 4 Catch Basin	S-1 Conc. for Structures Class "C" Cu.Yds.	S-4 Eem- Structures Forcing Steel Lbs.	
	From	To					60° Bend	90° Bend	60° Wye	6" x 8" 8' x 6" Increase Tee				
1-D	41+00	56+00	71/2L		10'	1550'								
2-D	41+00	56+00	37/2L		10'	1527'								
3-D	41+00	56+00	37/2L			1496'								
4-D	41+00	56+00	71/2R			1534'								
5-D	46+15		Rt.	56'	10'									
6-D	46+15		Lt.		100'						1	3.2	146	
18-D	44+40		Lt.		99'						1	3.2	146	
Totals				56'	199'	30'	6107'	2	1	2	1	2	6.4	292

STRUCTURES 20' SPAN & UNDER

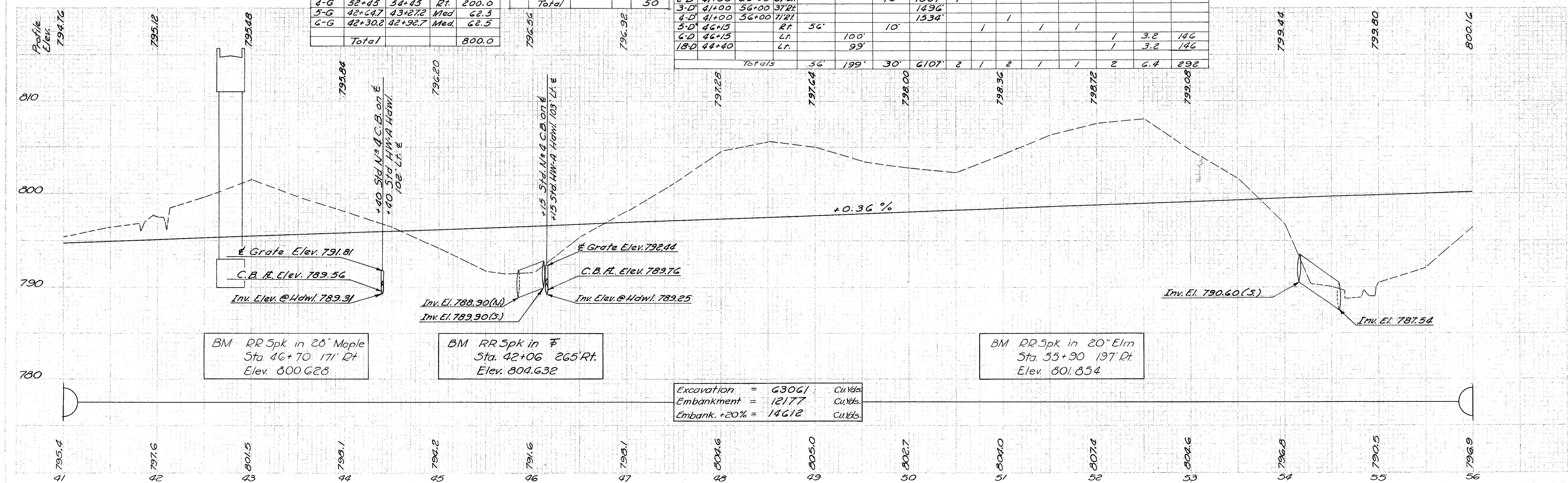
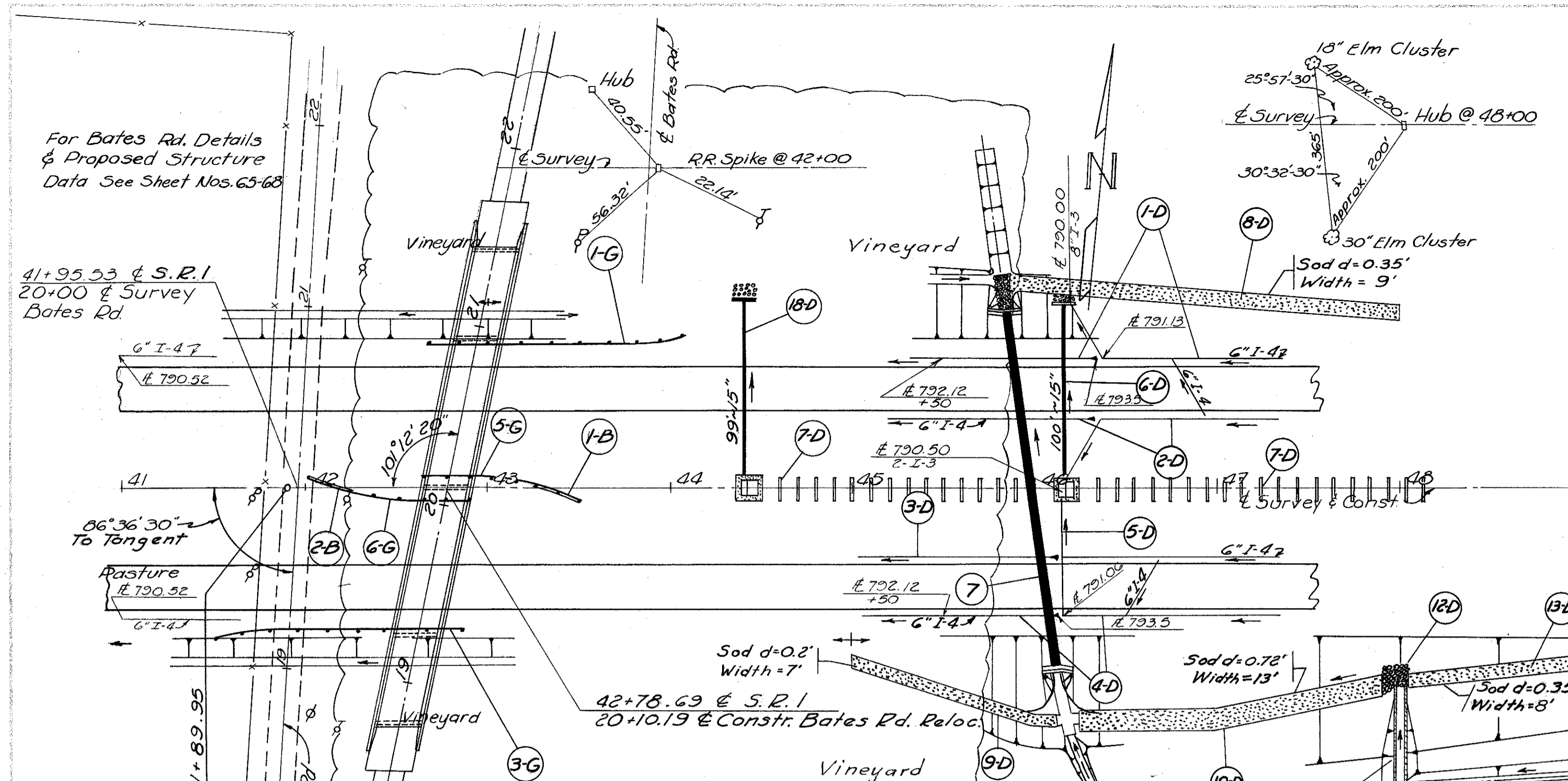
Str. No.	Station	Proposed Type	Size	Lgh.	Details on Sheet
7	45+98	Pipe	36" x 24"	200'	85
10	54+37	Pipe	36" x 24"	204'	87

(C) GUARD RAIL, I-15

Ref. No.	Station	Side	Steel Beam Type (Depth)	Lin. Ft.
1-G	42+71	44+08.50	Lt.	137.5
2-G	54+00	56+00	Lt.	200.0
3-G	41+49.50	42+87	Rt.	137.5
4-G	52+45	54+45	Rt.	200.0
5-G	42+64.7	43+27.2	Med.	62.5
6-G	42+30.2	42+92.7	Med.	62.5
Total				800.0

(B) BARRIER RAIL, I-15

Ref. No.	Station	Median	Steel Beam Type (Depth)	Lin. Ft.
1-B	43+27.2	43+52.2		25
2-B	42+03.2	42+30.2		25
Total				50



Excavation = 63061 Cu.Yds.
Embankment = 12177 Cu.Yds.
Embank. +20% = 14612 Cu.Yds.

BM RR Spk in 28" Maple
Sta. 46+70 171' Rt.
Elev. 800.628

BM RR Spk in F
Sta. 42+06 265' Rt.
Elev. 804.632

BM RR Spk in 20" Elm
Sta. 55+90 197' Rt.
Elev. 801.854