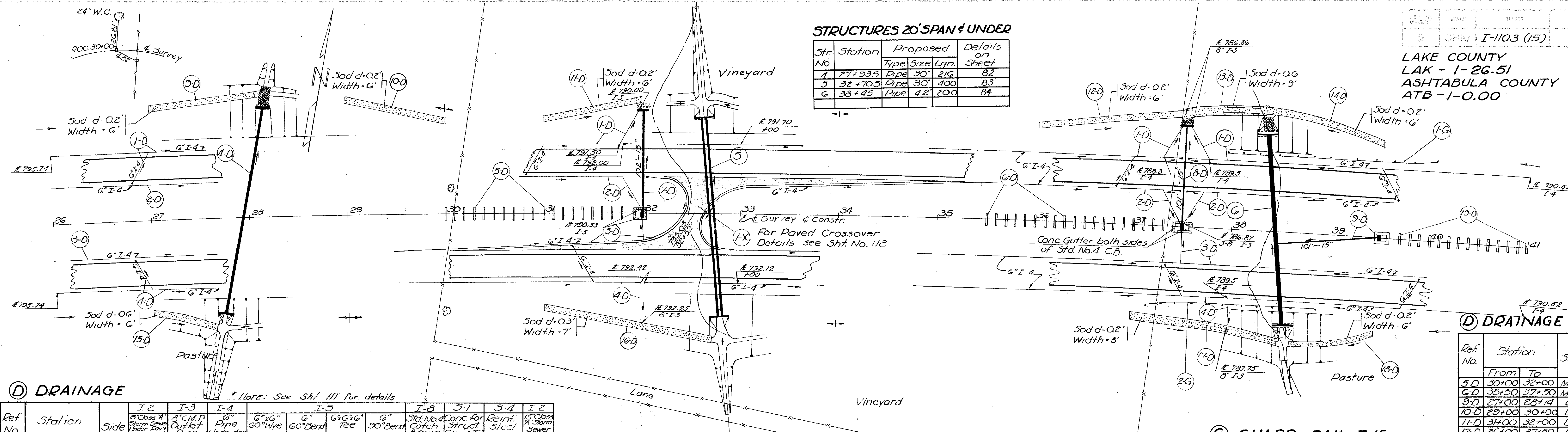


LAKE COUNTY  
LAK - 1-26.51  
ASHTABULA COUNTY  
ATB-1-0.00

**STRUCTURES 20' SPAN & UNDER**

Str. No.	Station	Proposed Type	Size	Lgn.	Details on Sheet
4	27+23.5	Pipe	30"	216'	82
5	32+70.5	Pipe	30"	400'	83
6	38+45	Pipe	42"	200'	84



**(D) DRAINAGE**

\*NOTE: See Sht. III for details

Ref. No.	Station	Side	I-2		I-3		I-4		I-5				I-8		I-10		I-22	
			6" Class A Storm Sewer Under Pav. (24" dia)	4" CMP Outlet Pipe	6" Pipe	6" x 6" Wve	6" Bend	6" x 6" Tee	90" Bend	5ft No. 4 Catch Basin	Conc. for Struct. Class C	Reinf. Steel	15" Class A Storm Sewer	6" Class A Storm Sewer	6" Class A Storm Sewer	6" Class A Storm Sewer	6" Class A Storm Sewer	6" Class A Storm Sewer
1-D	26+00	Lt		30	1730	6	1											
2-D	26+00	Lt		30	1503	2	1											
3-D	26+00	Lt		20	1616													
4-D	26+00	Lt		20	1708	4	1											
7-D	32+00	Lt		102														
8-D	37+50	Lt		101														
9-D	38+48	Med																
9-D	38+48	Med																
Totals			203	100	6563	12	2	3	1	3	6.4	292	101					

**(X) MEDIAN CROSSOVER PAVEMENT**

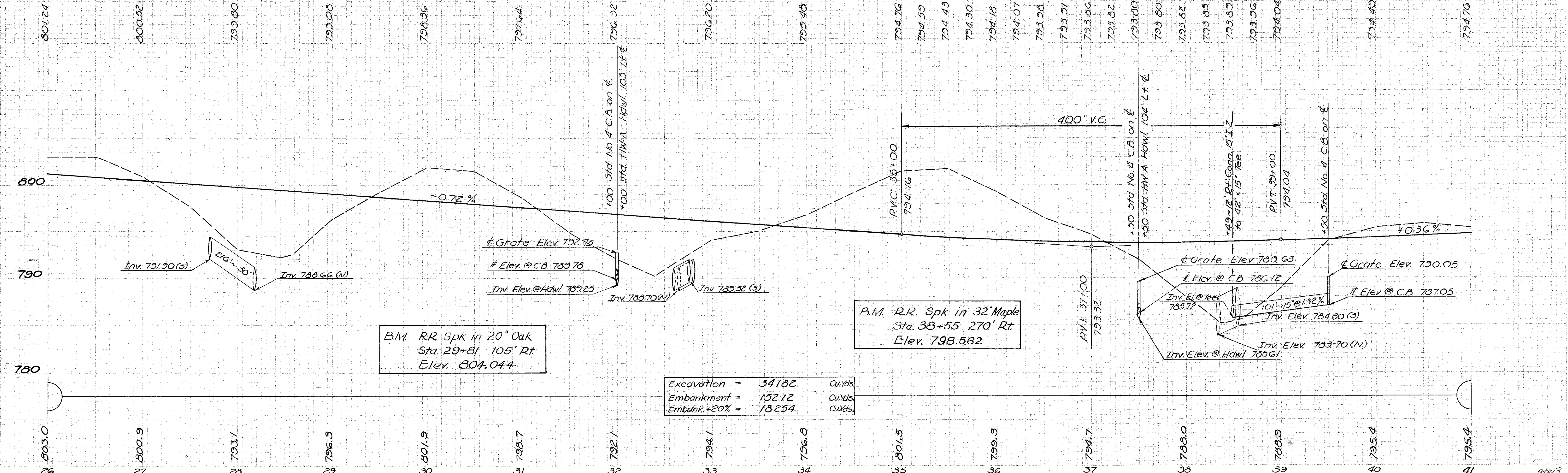
Ref. No.	Station	E-1 Compos. Subgrad	F-31 No. 46 Aggreg.	F-31 No. 6 Aggreg.	F-31 Bitum. Mater.	B-33 3"	F-18 5"	I-22 6"
1-X	32+52	473	3.8	3.8	236G	473	70.6	108.5

**(G) GUARD RAIL I-15**

Ref. No.	Station	Side	Steel Beam Pipe (deep)	Lin. Ft.
1-G	37+56	Lt	212.5	
2-G	37+17	Rt	175.0	
Totals			387.5	

**(D) DRAINAGE**

Ref. No.	Station	Side	L-10	
			Sodding	3q Yds.
5-D	30+00	Med	53	
6-D	35+50	Med	55	
9-D	27+00	Lt	76	
10-D	29+00	Lt	67	
11-D	31+00	Lt	67	
12-D	36+00	Lt	100	
13-D	37+50	Lt	80	
14-D	38+50	Lt	80	
15-D	27+00	Rt	44	
16-D	31+00	Rt	136	
17-D	37+00	Rt	135	
18-D	38+66	Rt	56	
19-D	39+50	Med	45	
Totals			994	



Excavation =	34182	Cu Yds.
Embankment =	15212	Cu Yds.
Embank. +20% =	18254	Cu Yds.