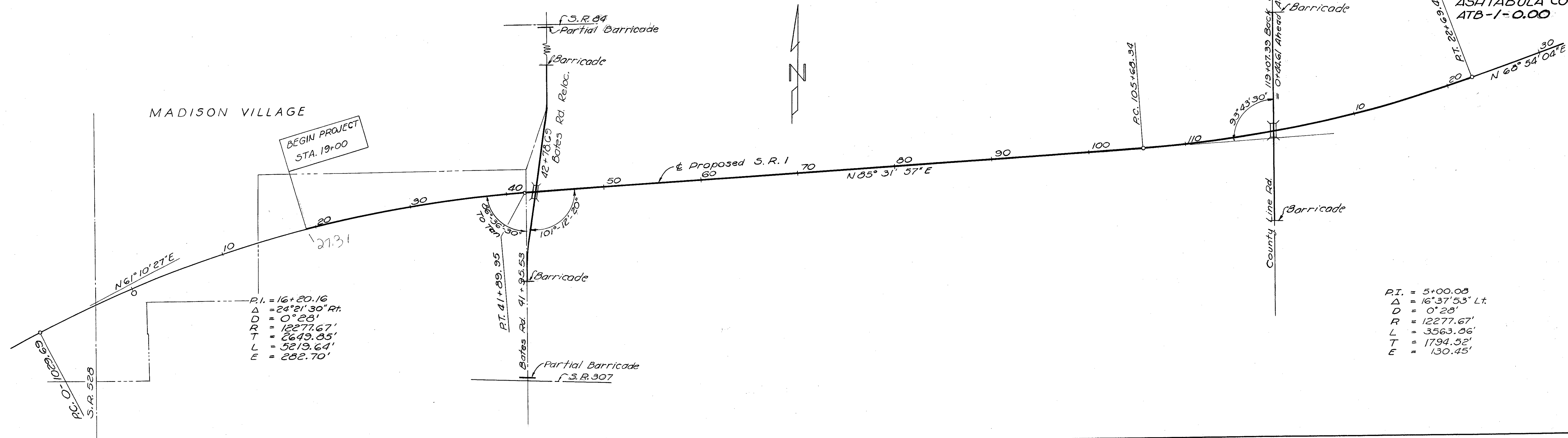


SCHEMATIC LAYOUT PLAN

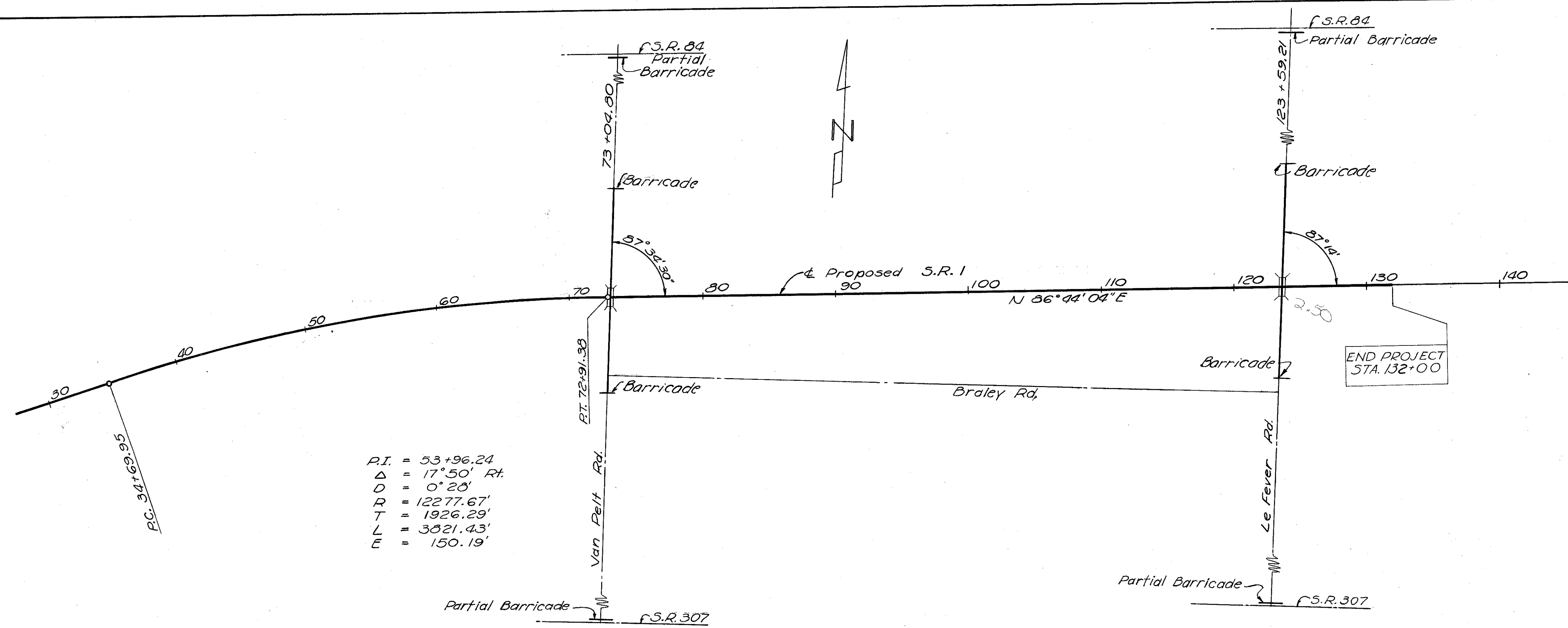
FED. RD. DIVISION	STATE	PROJECT
2	OHIO	I-110.3(15)

5
176

LAKE COUNTY
LAK-1-26.51
ASHTABULA COUNTY
ATB-1-0.00



P.I. = 5+00.08
 Δ = 16° 37' 53" Lt.
 D = 0° 28'
 R = 12277.67'
 L = 3563.86'
 T = 1794.52'
 E = 130.45'



NOTE

Lights, signs, and barricades shall be provided and maintained at each location indicated on the schematic plan. Barricades shall meet the requirements for the movable gate detailed on Standard Construction Drawing No. G-707. Lights shall meet the requirements of Sec. G-707 of the Specifications. Standard Road Closed signs shall be 40" x 84" size. Contractor shall furnish, erect, maintain, and remove barricades, lights, and signs, cost of which shall be included in the lump sum bid for Maintaining Traffic.

Scale: 1" = 500'

SCHEMATIC LAYOUT PLAN