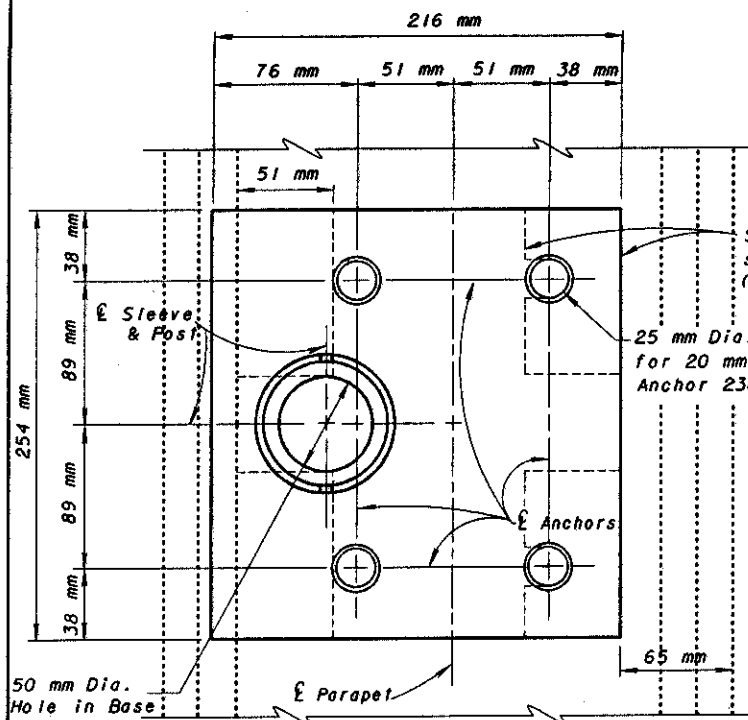
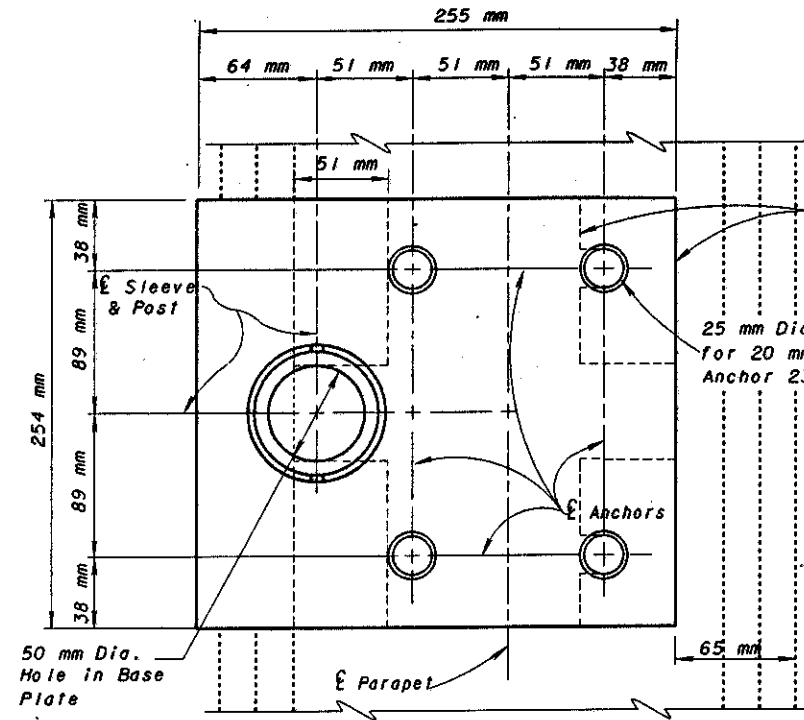


# RETROFIT BASE PLATES FOR FENCE POSTS



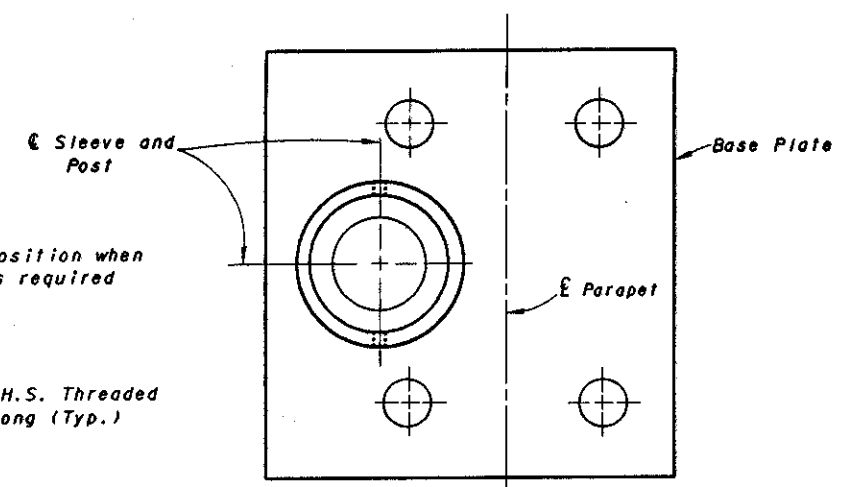
**PLAN BP-1**

SHIM POSITIONS ARE SHOWN, POST AND SET SCREWS NOT SHOWN



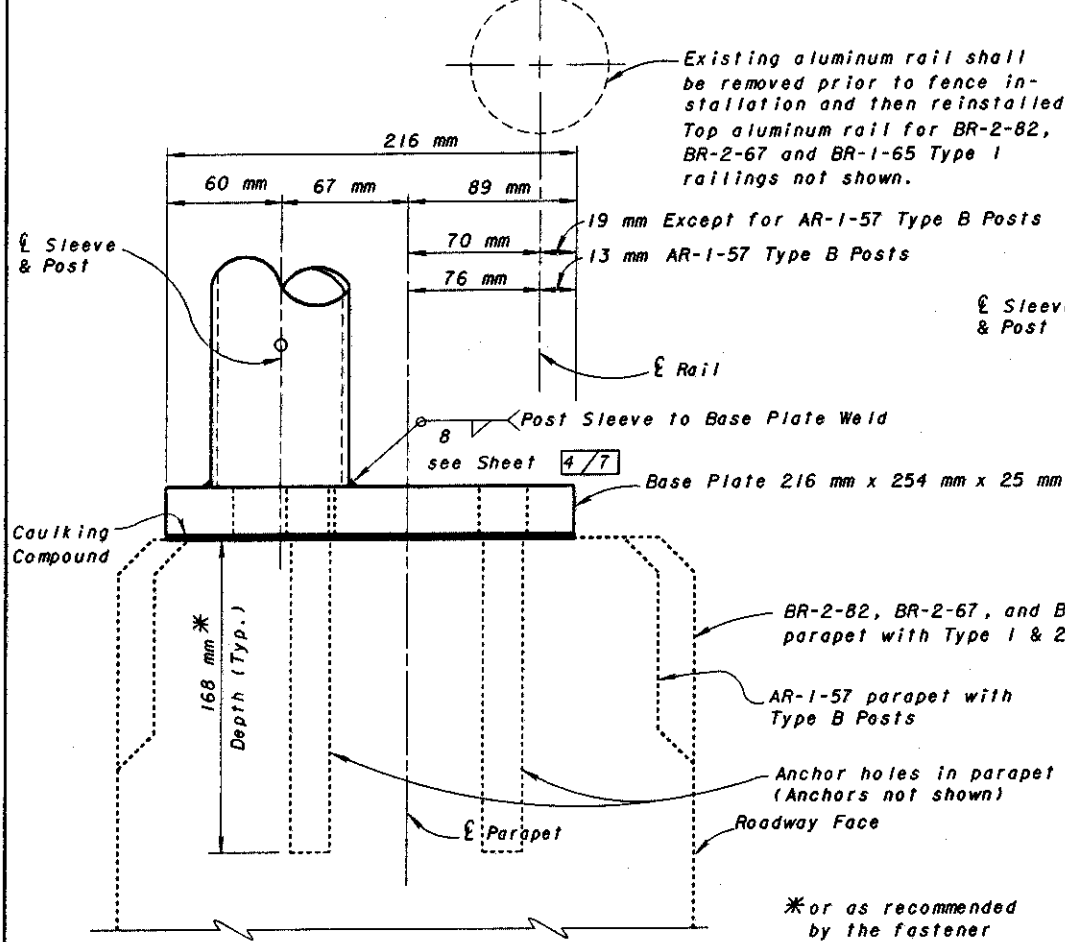
**PLAN BP-2**

SHIM POSITIONS ARE SHOWN, POST AND SET SCREWS NOT SHOWN

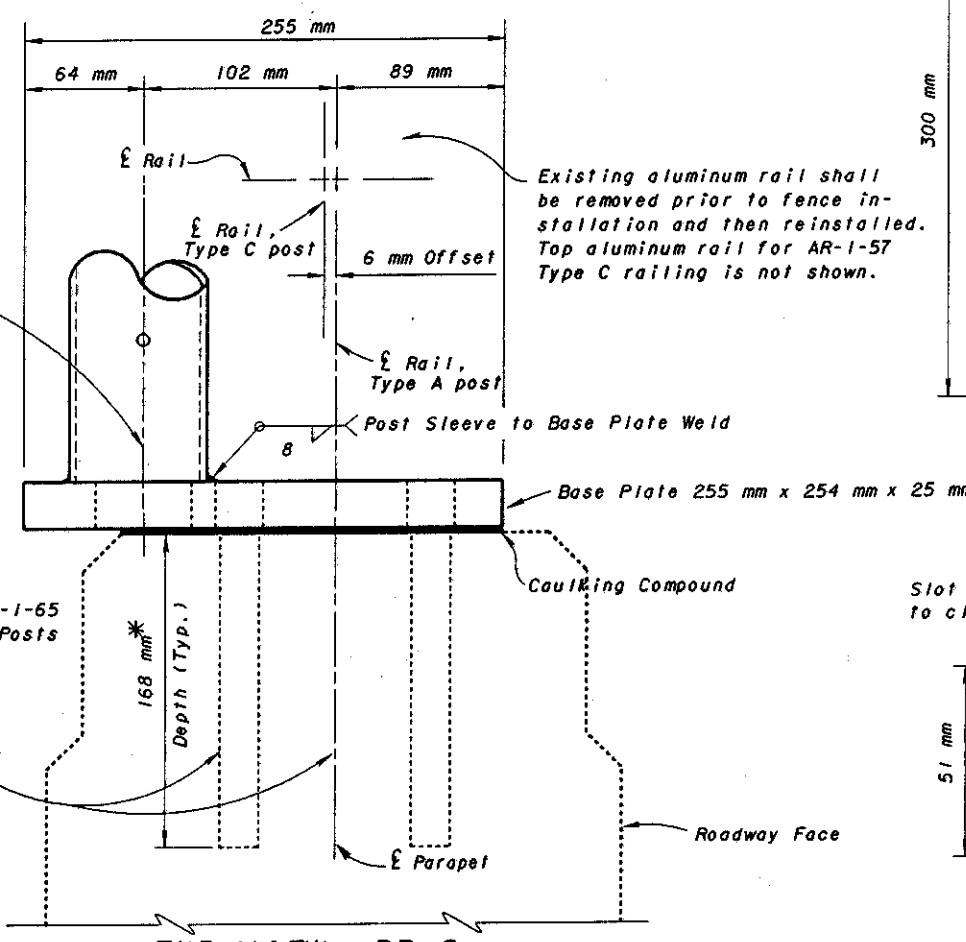


**POST SLEEVE PLAN**

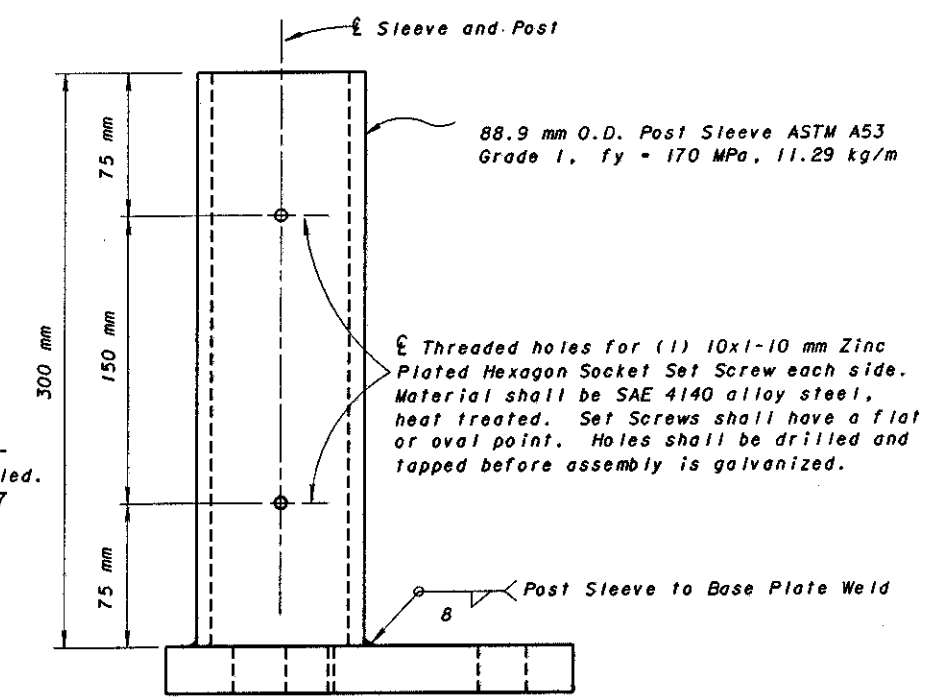
POST AND SET SCREWS NOT SHOWN



**END VIEW BP-1**

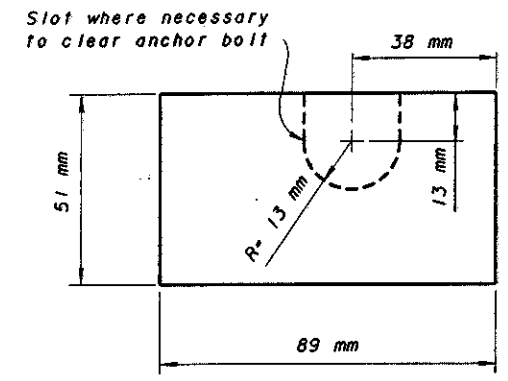


**END VIEW BP-2**



**POST SLEEVE ELEVATION**

POST AND SET SCREWS NOT SHOWN



**BASE PLATE SHIMS**

2 mm, 3 mm and 6 mm thick

Fence shall be installed by removing and reinstalling the aluminum rail(s). Base Plate shall be used on parapets having aluminum railing as shown on Standard Drawings BR-2-82, BR-2-67, BR-1-65 with Types 1 & 2 Posts and AR-1-57 with Type B Posts. Base Plate requires a sleeve. See Post Sleeve Detail on this sheet.

Fence shall be installed by removing and reinstalling the aluminum rail(s). Base Plate shall be used on parapets having aluminum railing as shown on Standard Drawing AR-1-57 with Types A and C posts. Base Plate requires a sleeve. See Post Sleeve Details on this sheet.

DESIGN AGENCY: BUREAU OF BRIDGES AND STRUCTURAL DESIGN  
 STATE OF OHIO DEPARTMENT OF TRANSPORTATION  
 REVIEWED: WFF/LMW  
 CHECKED: RLD  
 DRAWING NO: VPF-1-90M  
 PREPARED: JCR  
 DRAWN: GFJ/RJS  
 REVISED: DATE: 8-20-95  
 ENGINEER OF BRIDGES: [Signature]  
 STANDARD DRAWING: VANDAL PROTECTION FENCE RETROFIT BASE PLATES WHEN RAILS ARE REMOVED AND REINSTALLED  
 3 / 7