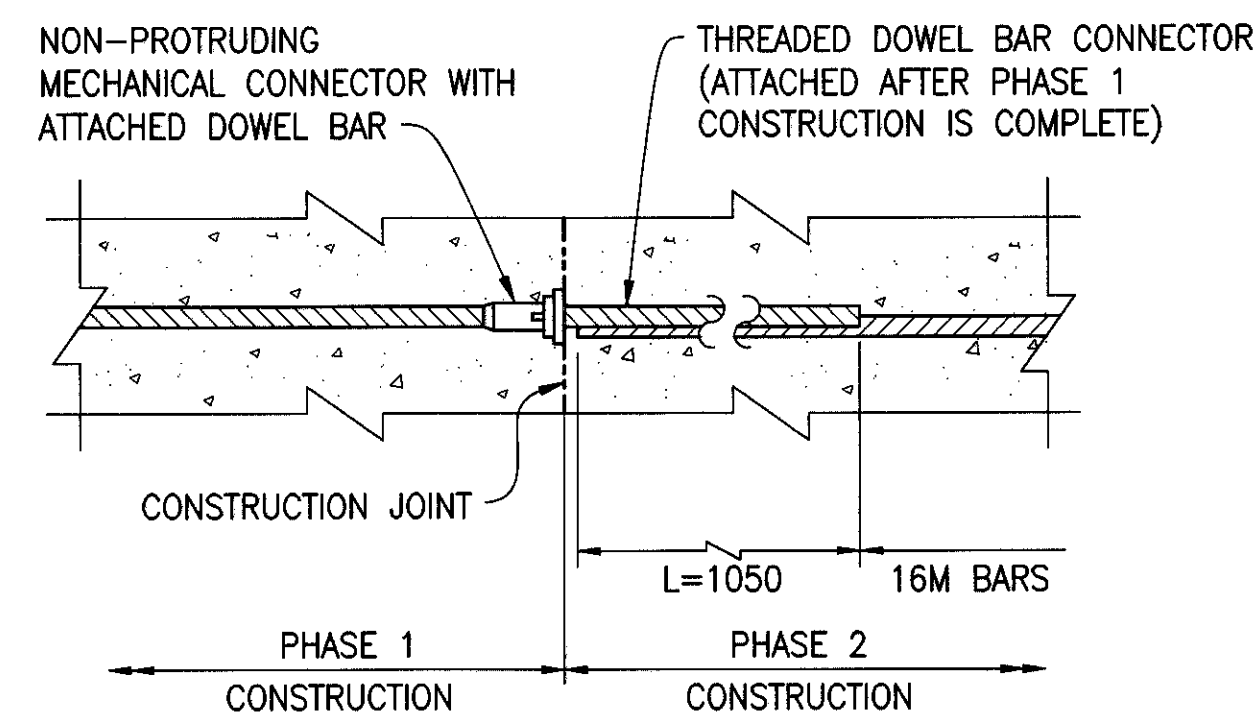
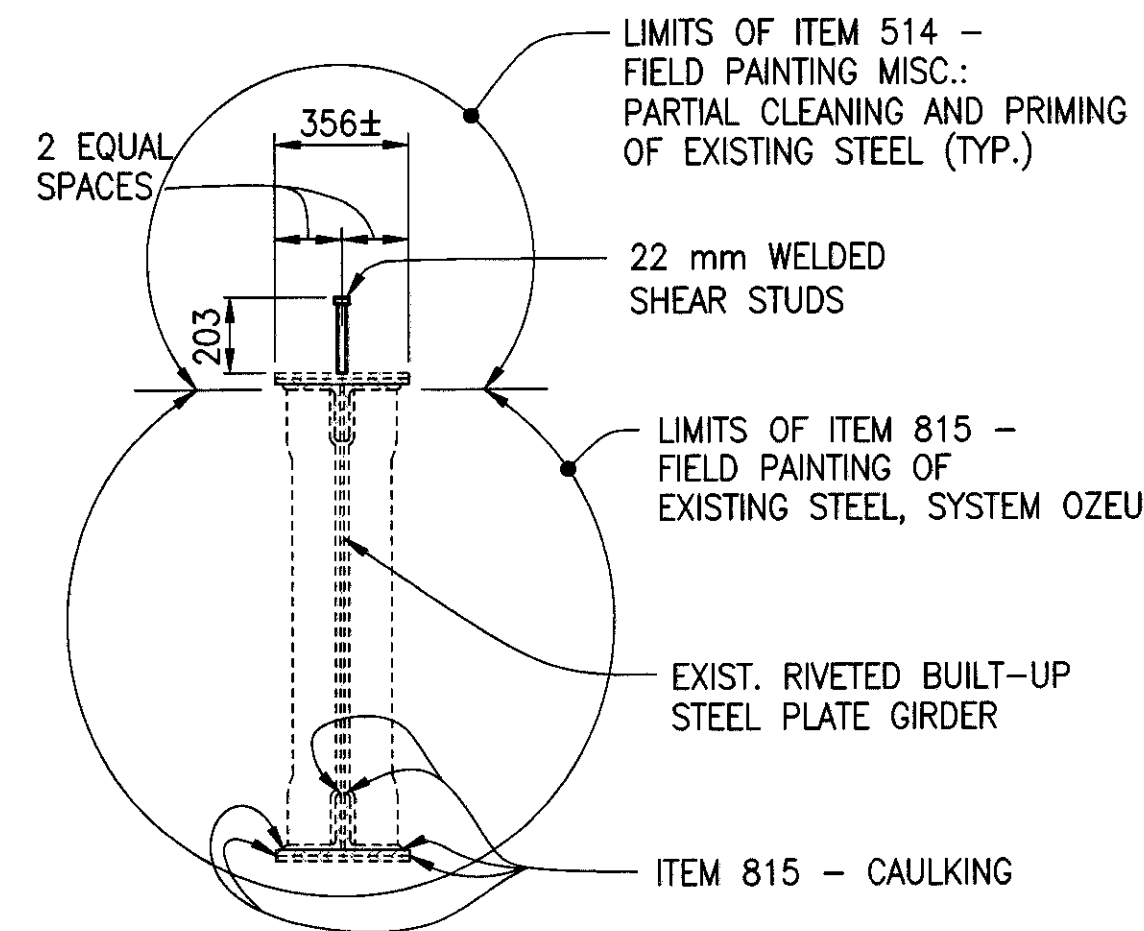


NOTE: ALL DIMENSIONS ARE IN MILLIMETERS UNLESS OTHERWISE NOTED.



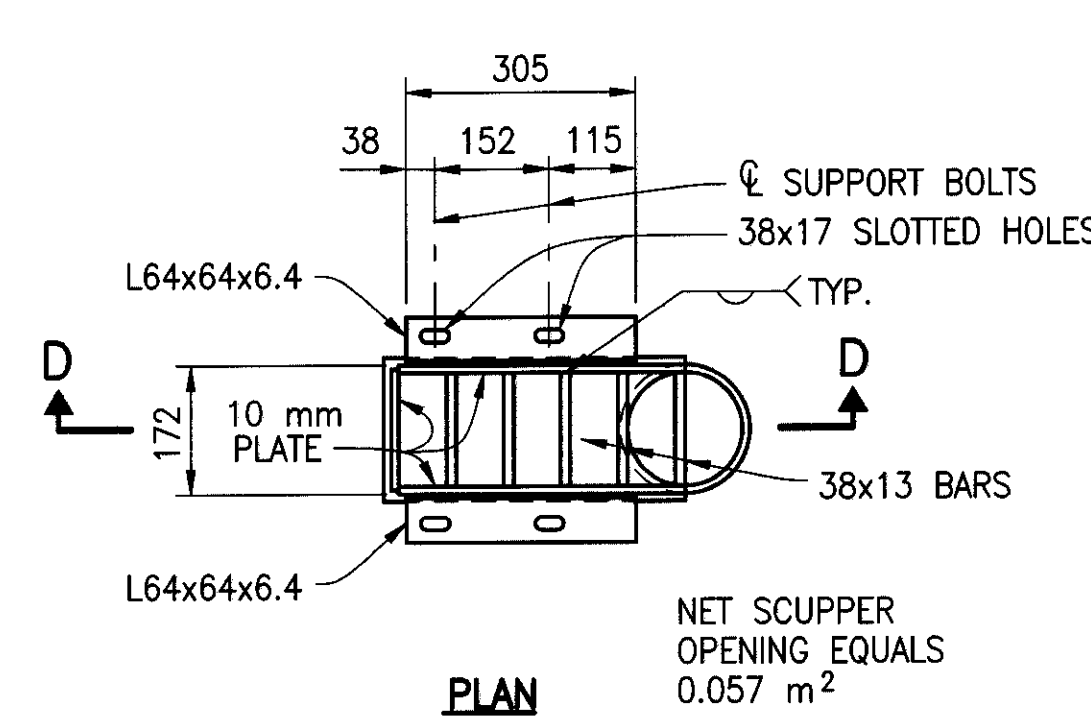
**MECHANICAL CONNECTOR DETAIL**

**MECHANICAL CONNECTOR:** AN APPROVED TYPE OF MECHANICAL CONNECTOR FOR REINFORCING BARS SHALL BE PROVIDED. INSTALLATION OF CONNECTORS SHALL CONFORM WITH MANUFACTURER'S RECOMMENDED PROCEDURES. CONNECTORS AND DOWEL BARS SHALL BE EPOXY COATED. COATING FOR BOTH CONNECTORS AND BARS SHALL CONFORM TO THE SAME SPECIFICATIONS. COATINGS WHICH HAVE BEEN DAMAGED OR WHICH OTHERWISE DO NOT MEET SPECIFICATIONS WITH RESPECT TO COLOR, CONTINUITY, OR UNIFORMITY MAY BE REPAIRED AS DIRECTED BY THE ENGINEER OR THEY SHALL BE REPLACED WITH MATERIAL WHICH MEETS THE SPECIFICATIONS. CONNECTORS AND DOWEL BAR EXTENSIONS SHALL CONFORM TO ITEM 509 AND BE INCLUDED IN THE BID PRICE PER CUBIC YARD FOR ITEM 844.

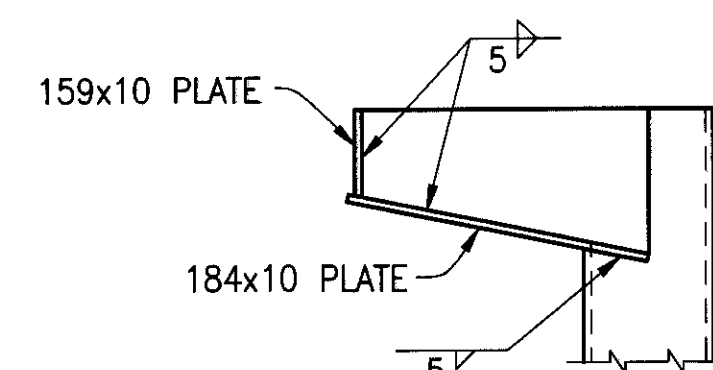


**FIELD PAINTING LIMIT DETAIL**

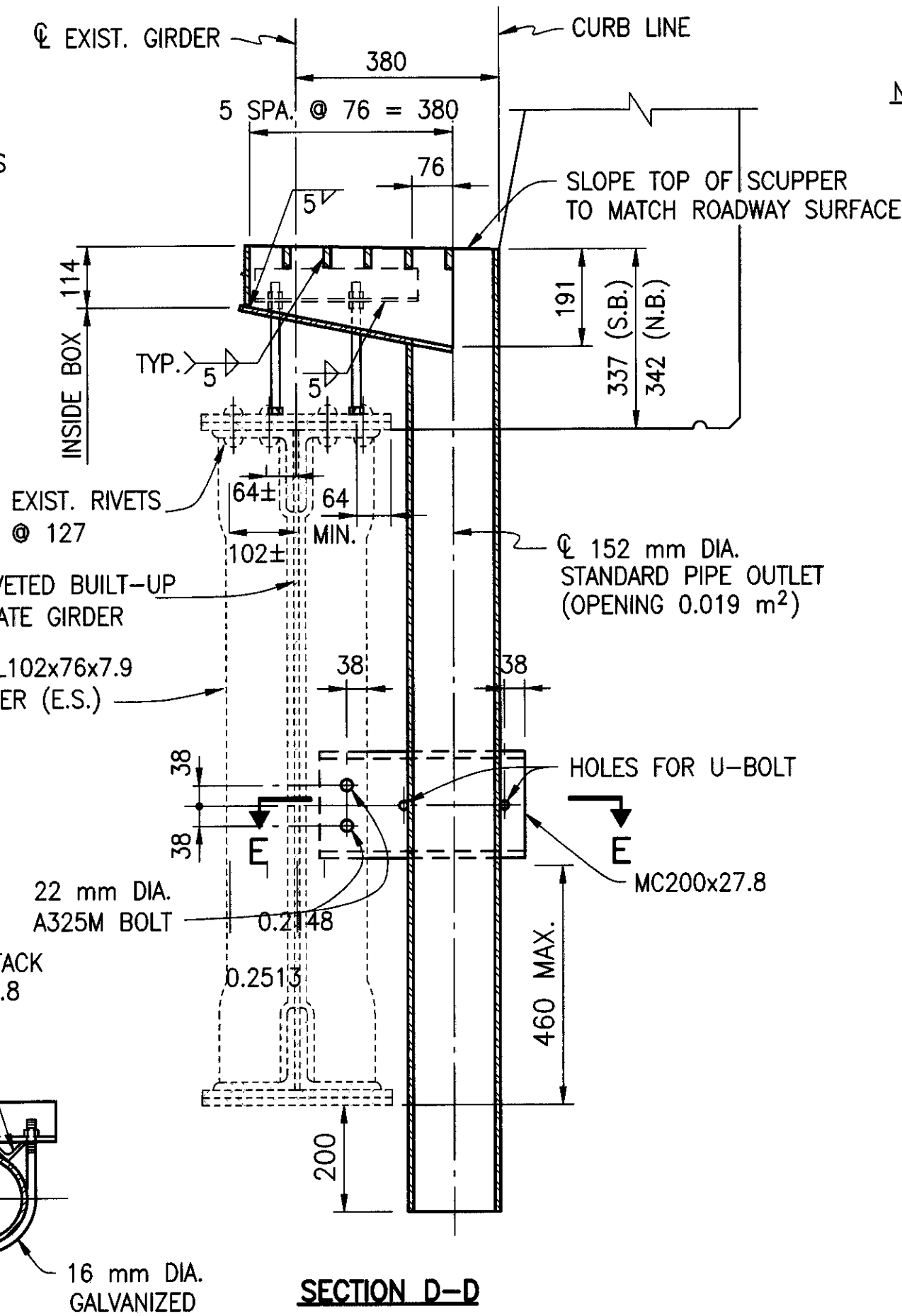
JOINT SETTING TABLE		TEMPERATURE (°C)								
		0°	5°	10°	15°	20°	25°	30°	35°	
"A" mm	AT REAR ABUTMENTS	49	46	42	39	36	33	30	27	
"A" mm	AT FORWARD ABUTMENTS	48	45	43	40	38	35	33	30	



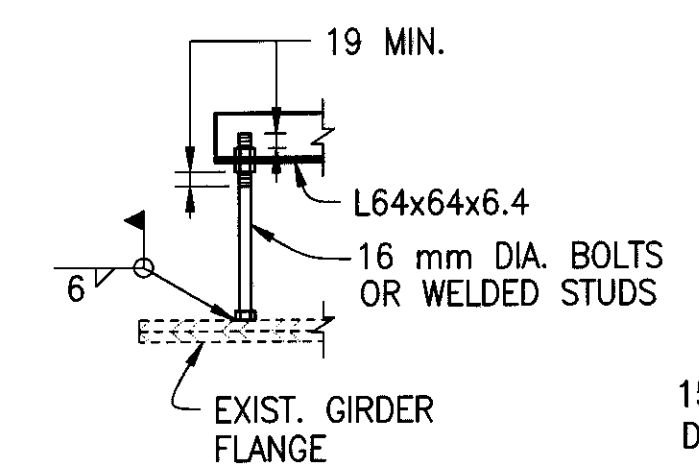
**PLAN**



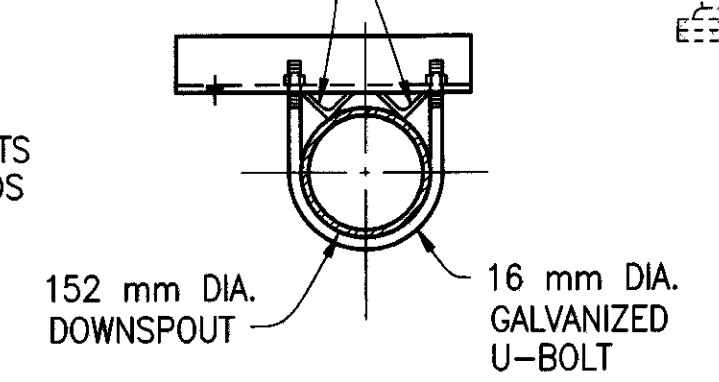
**ELEVATION**



**SECTION D-D**



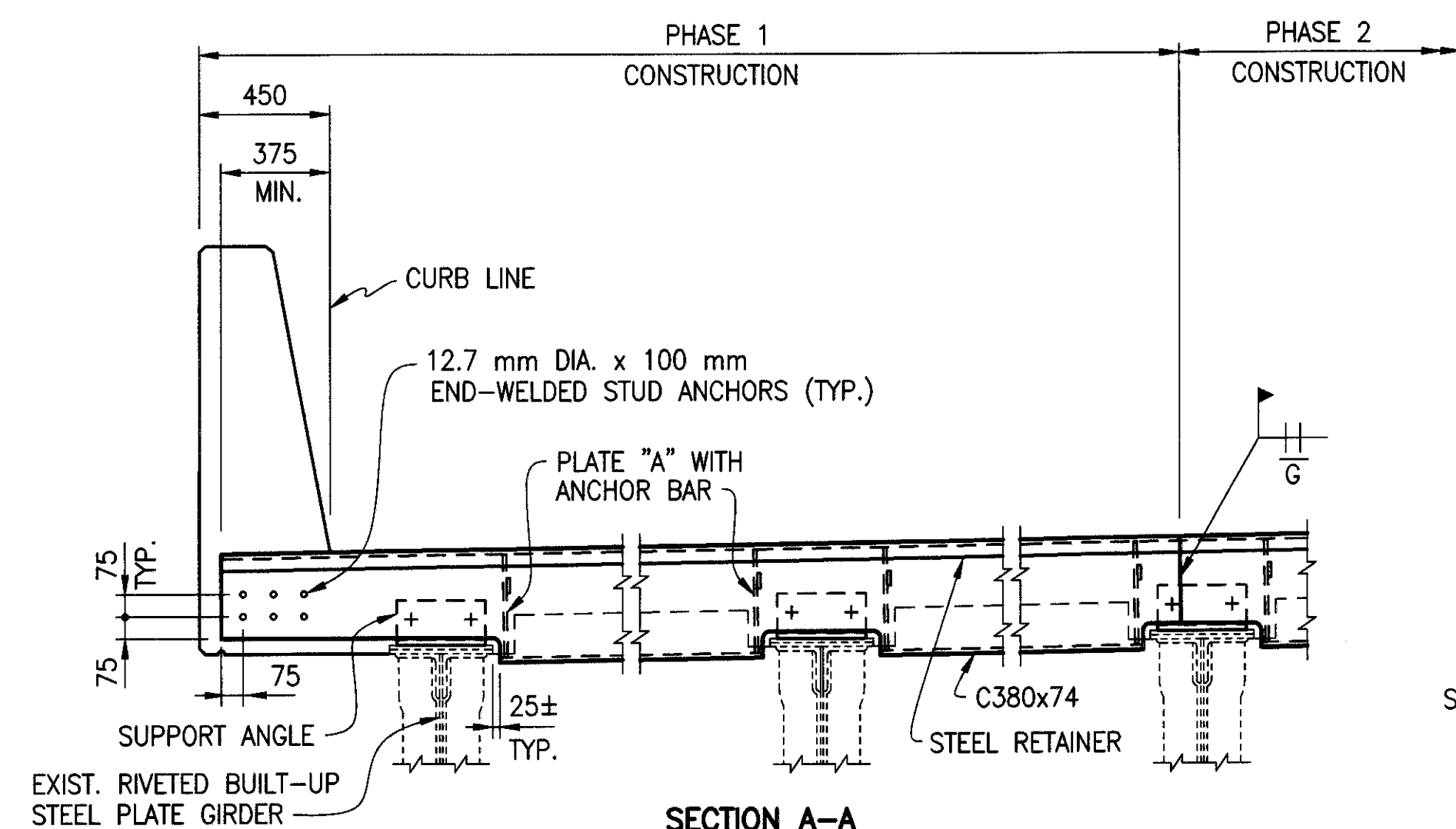
**SCUPPER SUPPORT BOLTS**



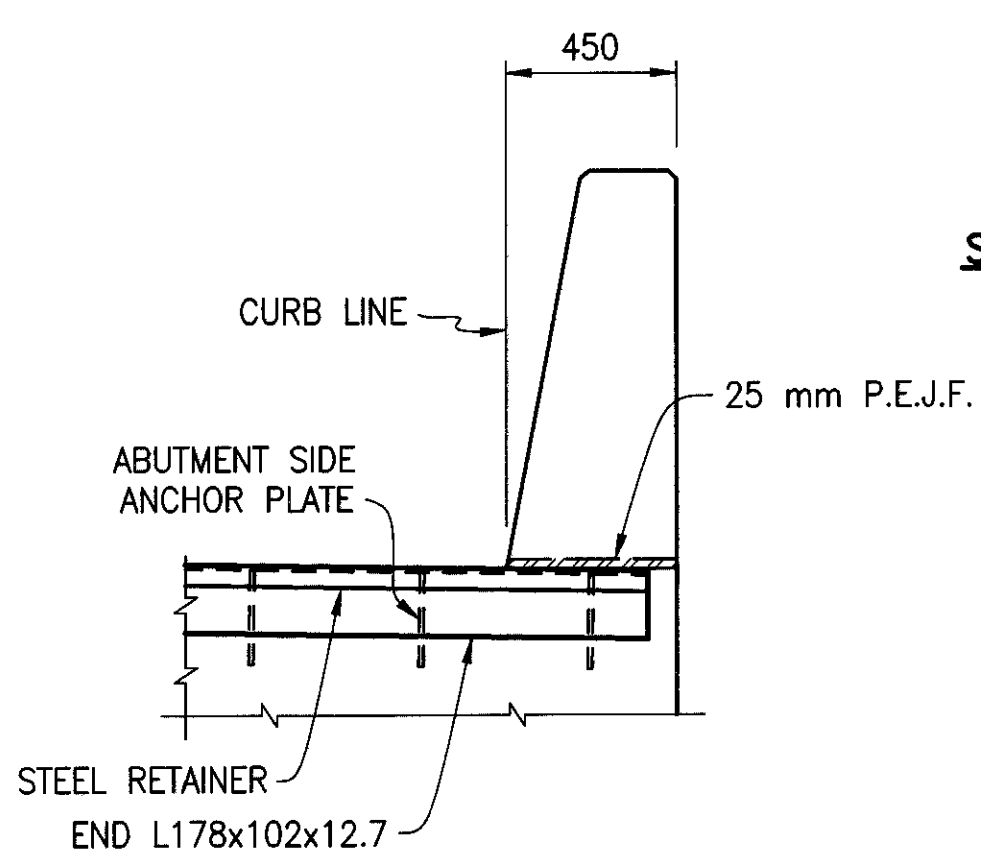
**SECTION E-E**

**SCUPPER DETAIL**

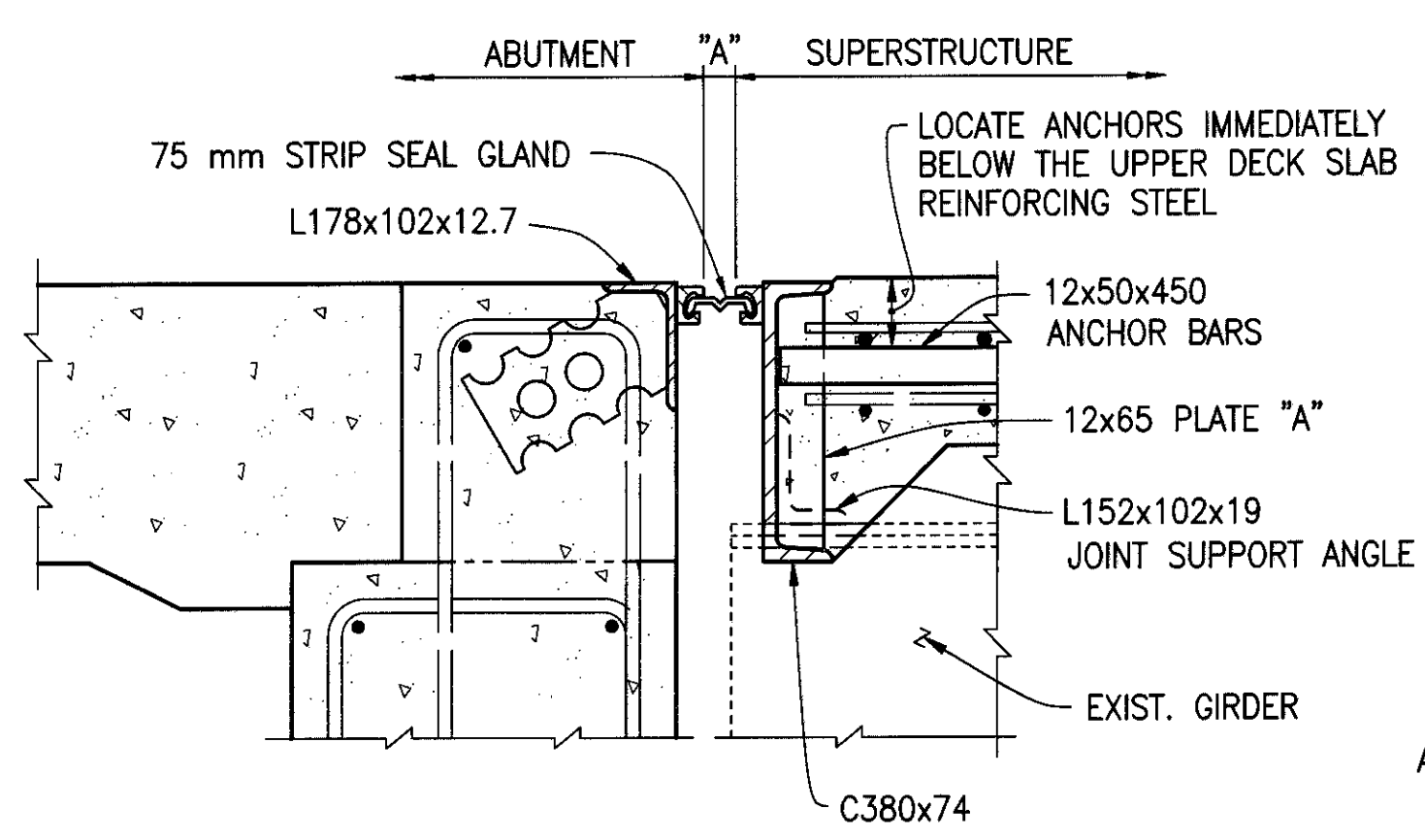
SCUPPERS, INCLUDING SUPPORT ANGLES, SHALL BE GALVANIZED IN ACCORDANCE WITH 711.



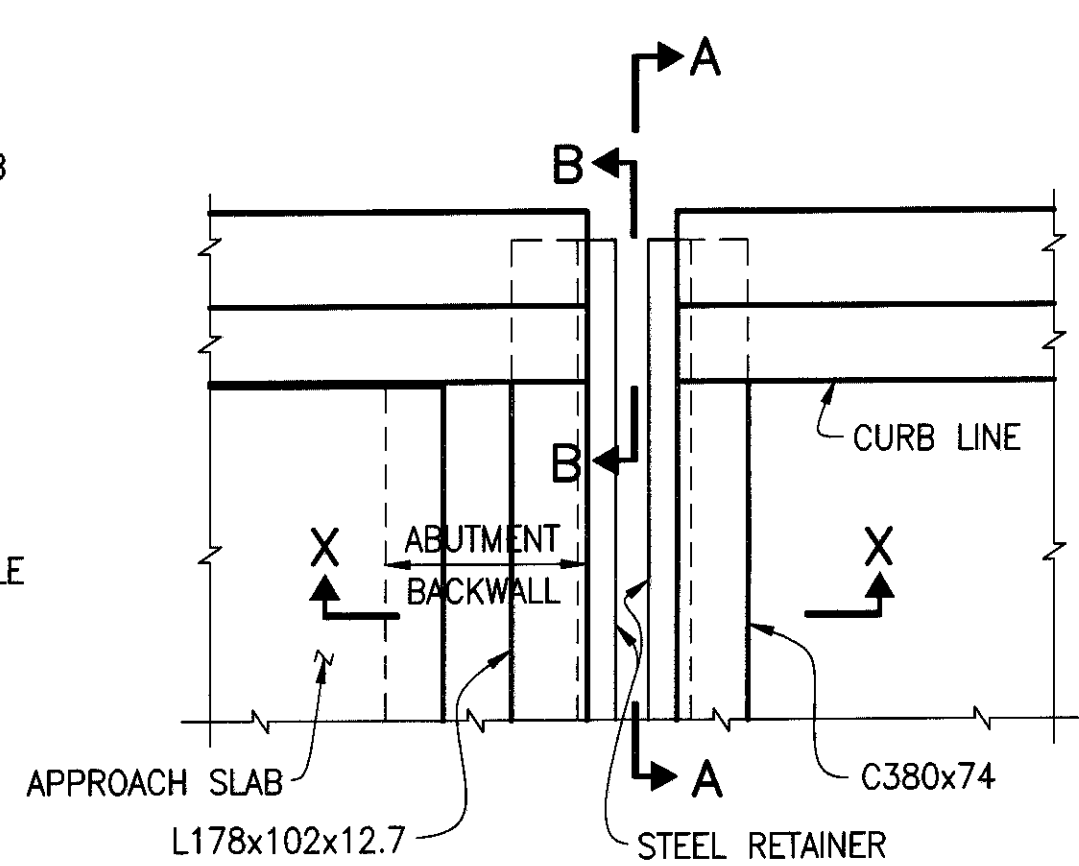
**SECTION A-A**



**SECTION B-B**



**SECTION X-X**



**PART PLAN AT ABUTMENT**

**STRIP SEAL EXPANSION JOINTS DETAIL**

NOTE: SEE SECTION A-A, B-B & X-X ON STANDARD DRAWING EXJ-4-87M, SHEET 1 & 2 OF 5, FOR DETAILS AND NOTES NOT SHOWN.

**NOTES**

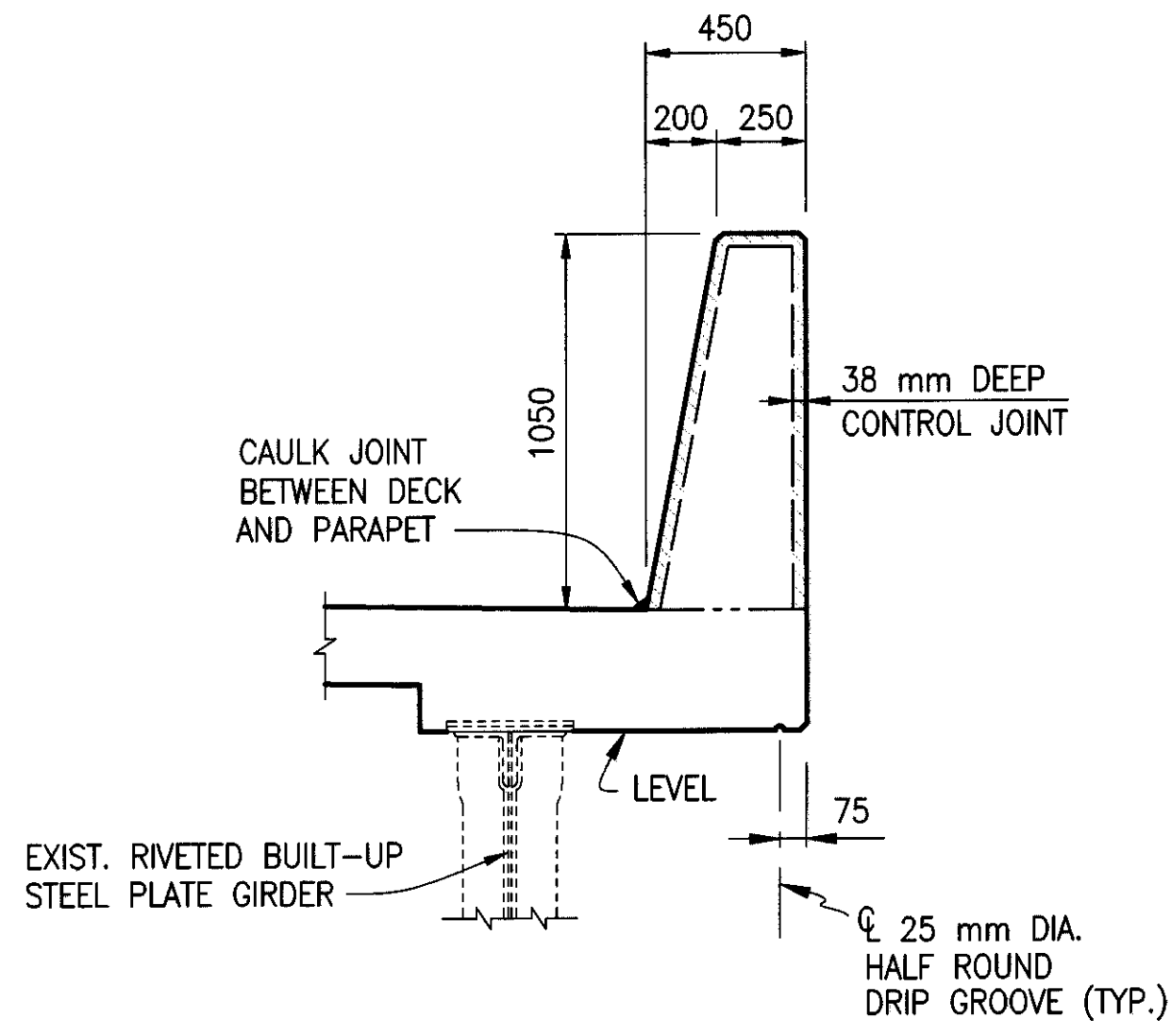
**MATERIALS:** SHOWN ARE NEW UNLESS OTHERWISE NOTED.

**NOTATION:** N.B.B. - NORTHBOUND BRIDGE  
S.B.B. - SOUTHBOUND BRIDGE  
E.S. - EACH SIDE  
P.E.J.F. - PREFORMED EXPANSION JOINT FILLER

**CONTROL JOINT:** THE CONTRACTOR SHALL CONSTRUCT 38 mm DEEP AND 6 mm WIDE CONTROL JOINTS SPACED AT A MINIMUM OF 1830 mm AND A MAXIMUM OF 2440 mm ON CENTER. THE CONTROL JOINTS SHALL BE MADE IN THE COMPLETE CIRCUMFERENCE OF THE PARAPET, STARTING AND ENDING AT THE ELEVATION OF THE TOP OF THE CONCRETE DECK. THE CONTRACTOR MAY EITHER FORM THE CONTROL JOINTS IN WITH FORM LINERS, OR, WITHIN 24 HOURS OF PLACEMENT, SAW CUT THE CONTROL JOINTS IN WITH THE USE OF AN EDGE GUIDE, FENCE, OR JIG WHICH IS REQUIRED TO ENSURE THAT THE CUT JOINT IS STRAIGHT, TRUE, AND ALIGNED ON ALL FACES OF THE PARAPET. THE ENTIRE LENGTH OF EACH CONTROL JOINT SHALL BE SEALED TO A MINIMUM DEPTH OF 38 mm WITH A CAULKING MATERIAL CONFORMING TO FEDERAL SPECIFICATION, TT-S-00227E. THIS WORK IS CONSIDERED INCIDENTAL TO ITEM 517 - RAILING, PARAPET WITH CHAIN LINK FENCE, AS PER PLAN. NO EXTRA PAYMENTS WILL BE MADE.

**RIVET PITCH:** SHOWN SHEETS 11/18 AND 12/18

**INSTALLATION OF SEAL:** DURING INSTALLATION OF THE SUPPORT/ARMOR FOR THE SUPERSTRUCTURE SIDE OF THE EXPANSION JOINT SEAL, THE SEATING OF BEAMS ON BEARINGS SHALL BE CAREFULLY OBSERVED TO ASSURE THAT POSITIVE BEARING IS MAINTAINED. PROPER VERTICAL FIT OF THE SUPPORT/ARMOR ON THE BEAMS SHALL BE ACHIEVED BY POSITIONING OF THE BEVEL FILL PLATES RATHER THAN BY CLAMPING FORCE.



**1050 mm SINGLE SLOPE BARRIER DETAIL**

96161SD.DWG JOB NO. 96161 DATE 8/30/99 DRAWN BY KH,PH