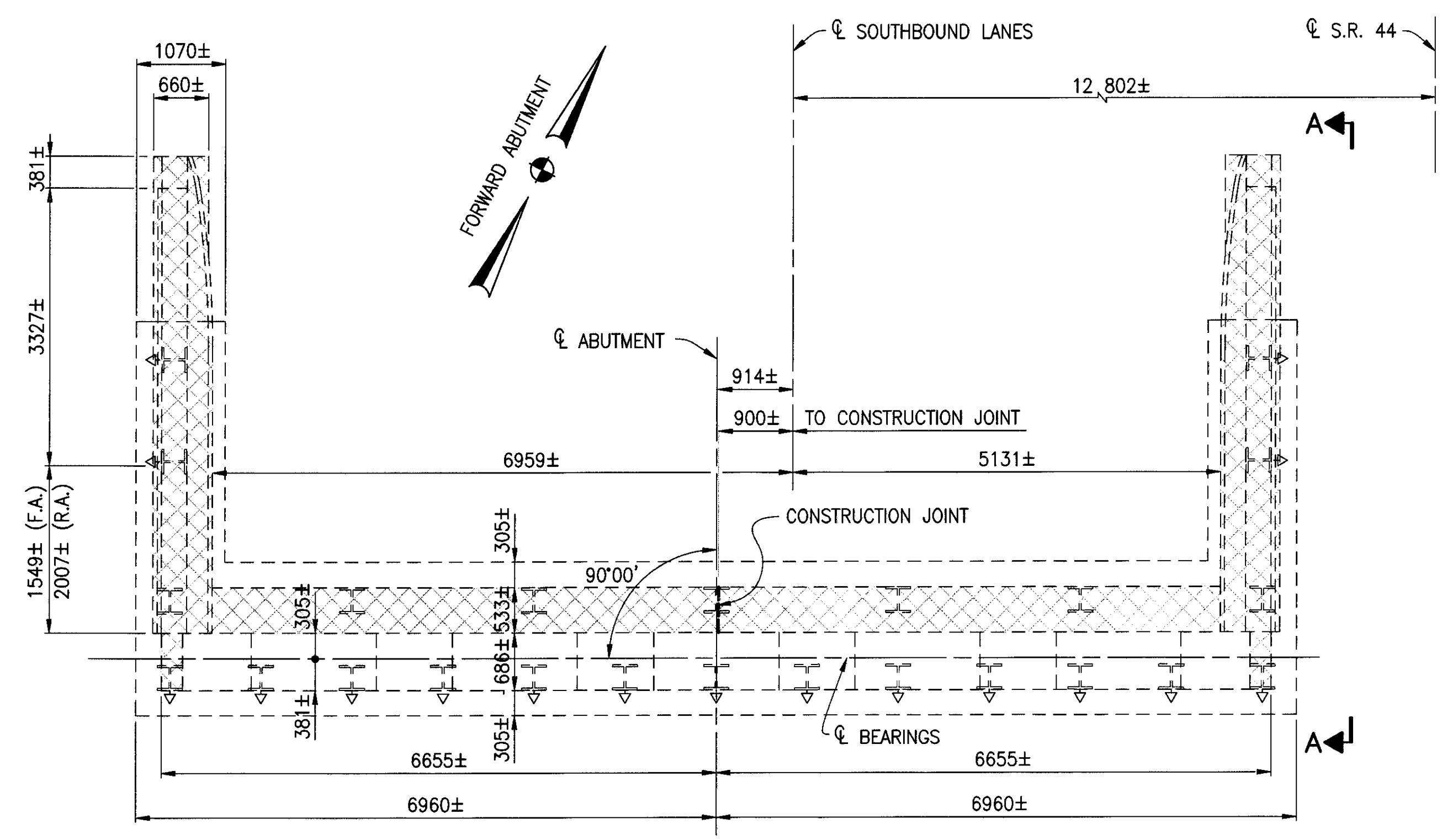
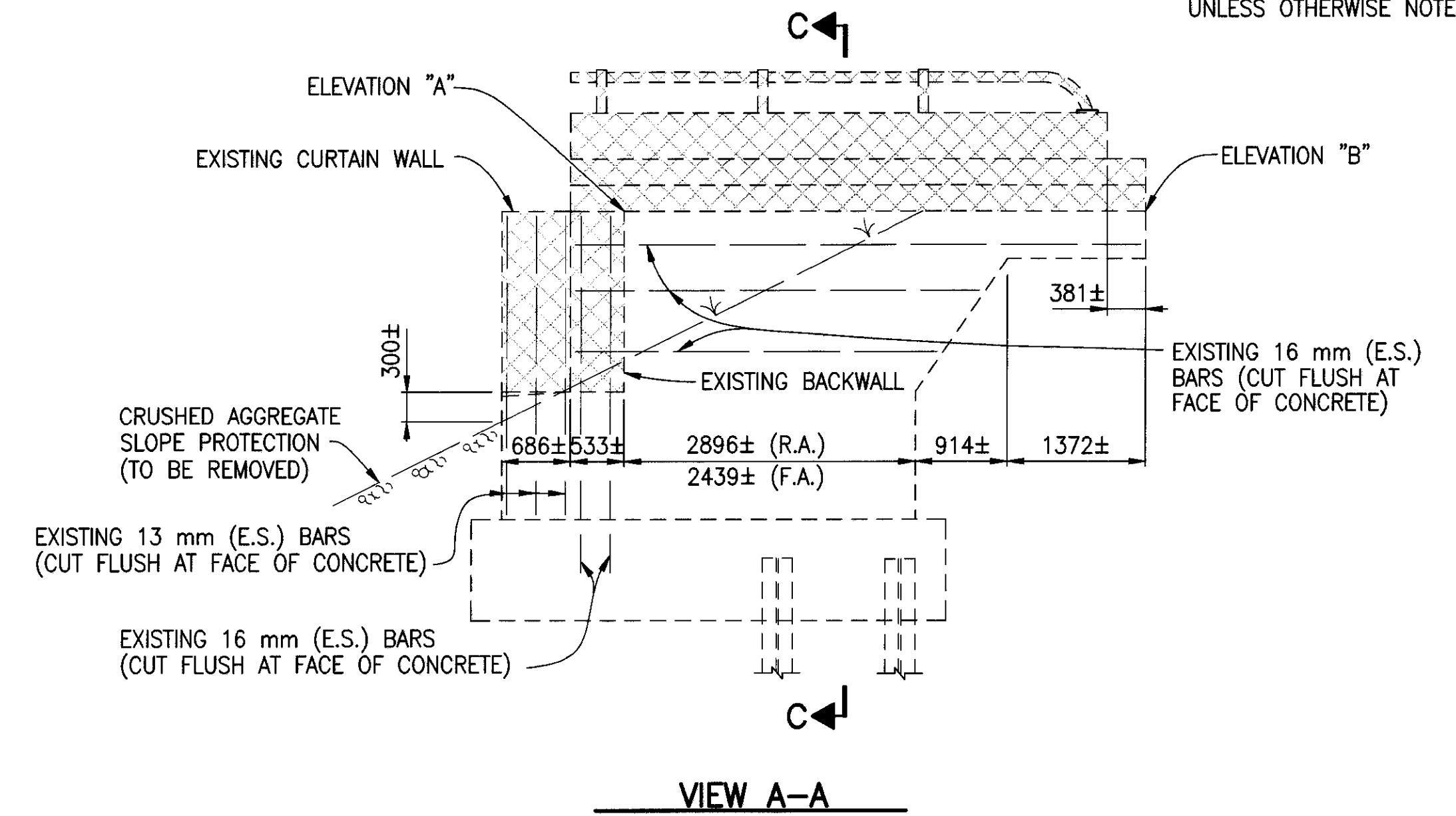


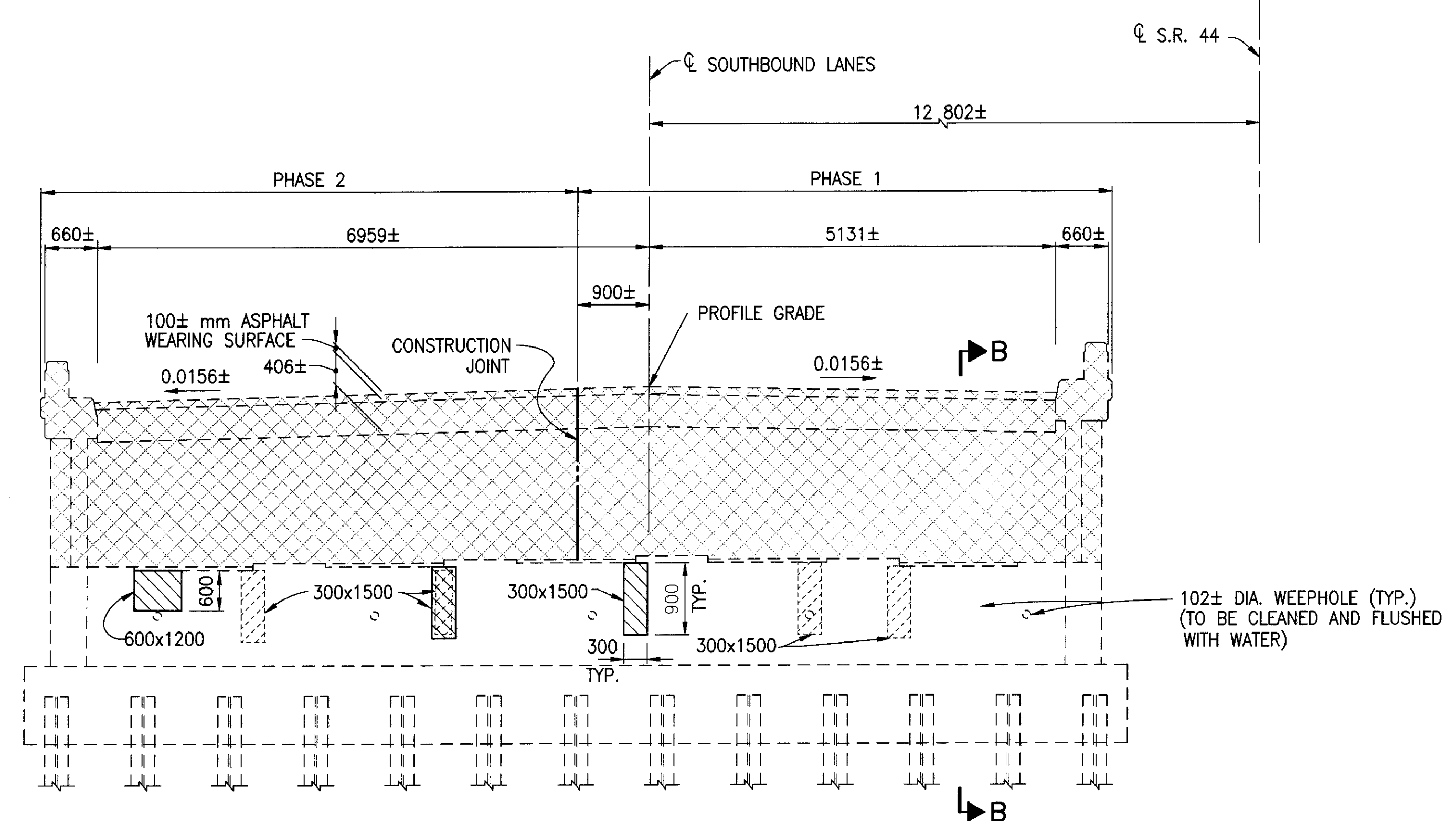
NOTE: ALL DIMENSIONS ARE IN MILLIMETERS UNLESS OTHERWISE NOTED.



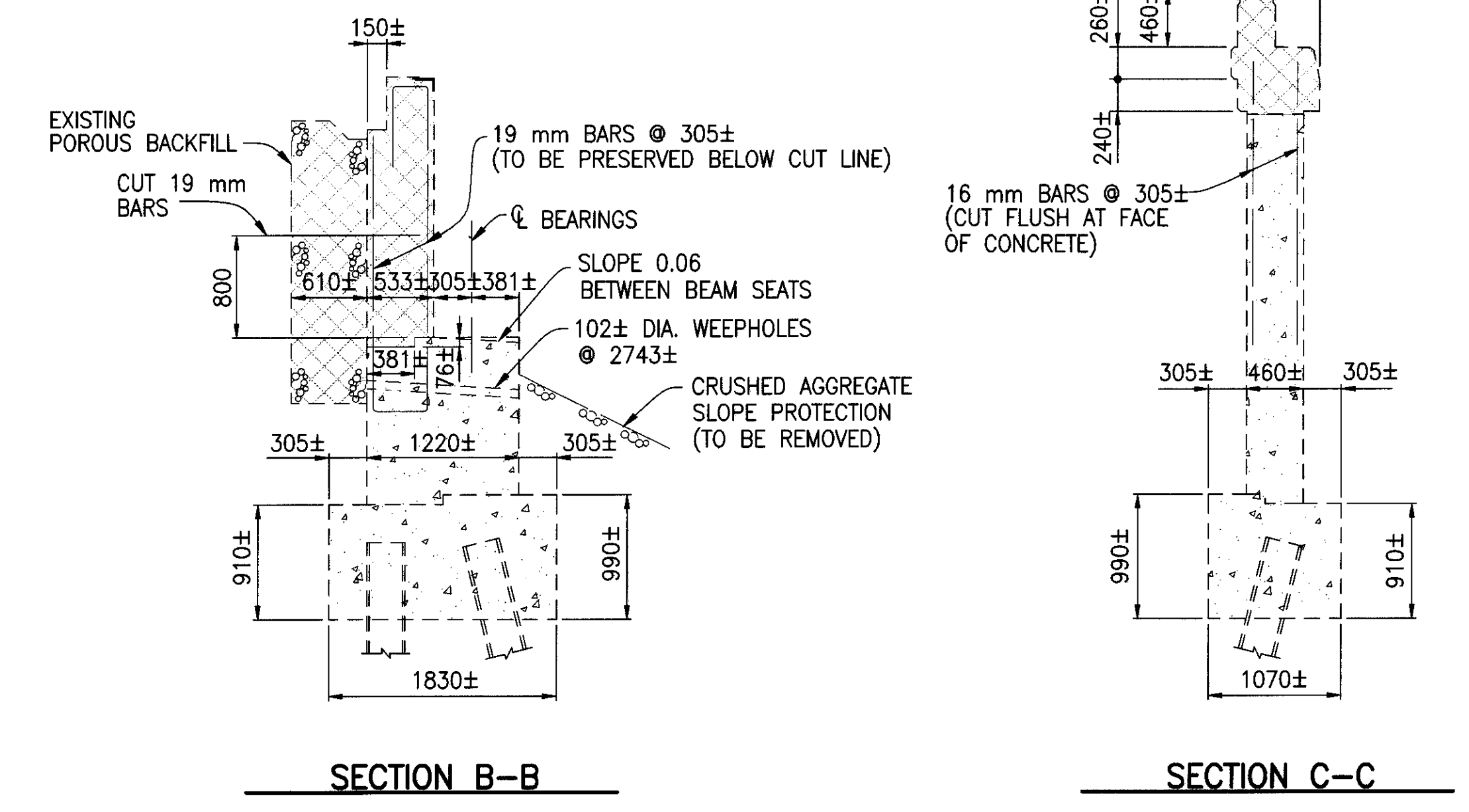
FORWARD ABUTMENT PLAN
(SOUTHBOUND BRIDGE LAK-90-23609)
(REAR ABUTMENT OPPOSITE HAND)



WINGWALL REMOVAL ELEVATION TABLE			
LOCATION		ELEVATION "A"	ELEVATION "B"
REAR ABUTMENT	LEFT (WEST) WINGWALL	266.057	266.211
	RIGHT (EAST) WINGWALL	266.088	266.242
FORWARD ABUTMENT	LEFT (WEST) WINGWALL	263.216	263.075
	RIGHT (EAST) WINGWALL	263.247	263.106



FORWARD ABUTMENT ELEVATION
(SOUTHBOUND BRIDGE LAK-90-23609)
(REAR ABUTMENT OPPOSITE HAND)



LEGEND

- INDICATES PORTION OF STRUCTURE TO BE REMOVED.
- INDICATES APPROXIMATE LOCATION OF ITEM 519 PATCHING CONCRETE STRUCTURE, AS PER PLAN FOR UNIT SHOWN
- INDICATES APPROXIMATE LOCATION OF ITEM 519 PATCHING CONCRETE STRUCTURE, AS PER PLAN FOR UNIT OPPOSITE HAND

NOTES

- NOTATION:** E.S. - EACH SIDE
R.A. - REAR ABUTMENT
F.A. - FORWARD ABUTMENT

96161RE1.DWG JOB NO. 96161 DATE 8/23/99 DRAWN BY KHJPS,KAK,PH