

NOTE: ALL DIMENSIONS ARE IN MILLIMETERS UNLESS OTHERWISE NOTED. STATIONS AND ELEVATIONS ARE SHOWN IN METERS.

RICHLAND ENGINEERING LIMITED
 29 NORTH PARK STREET
 MANSFIELD, OHIO 44902

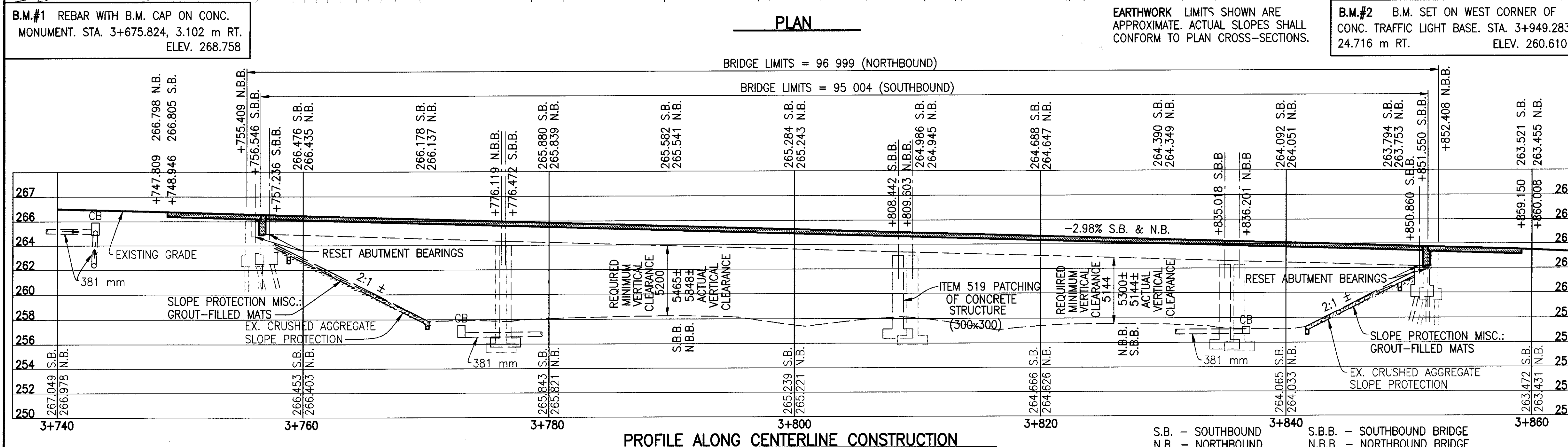
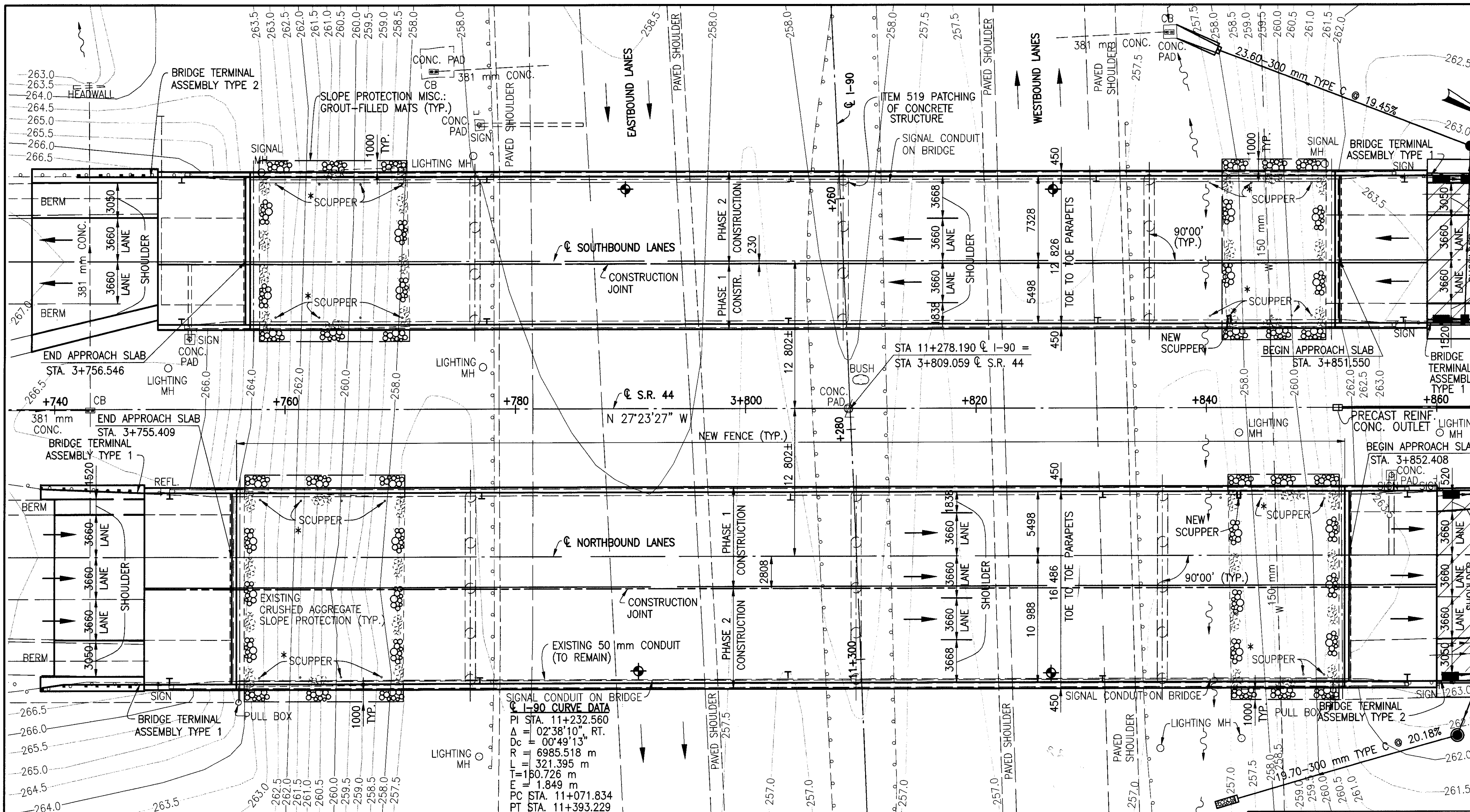
DATE 9/8/99
 STRUCTURE FILE NO. 4304381/4304411

REVIEWED
 DRAWN KH
 CHECKED DT

LAKE COUNTY
 STA. 3+756.546 TO 3+851.550
 STA. 3+755.409 TO 3+852.408

SITE PLAN
 BRIDGE NO. LAK-90-23609/23641
 S.R. 44 OVER I-90

1 / 18
 24
 41



* EXISTING SCUPPERS TO BE REMOVED WITH DECK

S.R. 44
 CURRENT AVERAGE DAILY TRAFFIC: 23,148 (1999)
 CURRENT AVERAGE DAILY TRUCK TRAFFIC: 1389 (1999)
 DESIGN AVERAGE DAILY TRAFFIC: 29,970 (2019)

EXISTING STRUCTURE (SOUTHBOUND)

TYPE: REINFORCED CONCRETE DECK ON CONTINUOUS RIVETED, BUILT-UP STEEL PLATE GIRDERS AND REINFORCED CONCRETE SUBSTRUCTURE.

SPAN: 19 202±; 32 004±; 26 518± & 15 900± mm.
 ROADWAY: 12 090± mm FACE TO FACE OF CURB
 LOADING: CF 2000
 SKEW: NONE
 WEARING SURFACE: 100± mm ASPHALT
 APPROACH SLAB: 7620± mm (AS-1-54)
 ALIGNMENT: TANGENT (S.R. 44); 2'38"10" RT. CURVE (I-90)
 CONDITION: DECK POOR, REMAINDER GOOD
 YEAR BUILT: 1959
 STRUCTURE FILE NO. 4304381
 DISPOSITION: DECK TO BE REPLACED, SUPERSTRUCTURE AND SUBSTRUCTURE REPAIRED, AND REUSED.

PROPOSED STRUCTURE (SOUTHBOUND)

PROPOSED WORK: NEW REINFORCED CONCRETE COMPOSITE DECK ON REUSED STEEL RIVETED, BUILT-UP PLATE GIRDERS AND REUSED REINFORCED CONCRETE SUBSTRUCTURE UNITS.

SPAN: 19 202±; 32 004±; 26 518± & 15 900± mm.
 ROADWAY: 12 826 mm TOE TO TOE OF PARAPETS
 LOADING: MS 18 AND ALTERNATE MILITARY LOADING
 SKEW: NONE
 WEARING SURFACE: 25 mm MONOLITHIC CONCRETE
 APPROACH SLAB: 7600 mm LONG (AS-1-81M)
 ALIGNMENT: (I-90) 662 482 mm RT. CURVE; (S.R. 44) TANGENT
 LATITUDE: 41°40'13" N
 LONGITUDE: 81°14'50" E
 CROWN RATE: 0.016

EXISTING STRUCTURE (NORTHBOUND)

TYPE: REINFORCED CONCRETE DECK ON CONTINUOUS RIVETED, BUILT-UP STEEL PLATE GIRDERS AND REINFORCED CONCRETE SUBSTRUCTURE.

SPAN: 20 117±; 33 528±; 26 518± & 15 900± mm.
 ROADWAY: 15 748± mm FACE TO FACE OF CURB
 LOADING: CF 2000
 SKEW: NONE
 WEARING SURFACE: 100± mm ASPHALT
 APPROACH SLAB: 7620± mm (AS-1-54)
 ALIGNMENT: TANGENT (S.R. 44); 2'38"10" RT. CURVE (I-90)
 CONDITION: DECK POOR, REMAINDER GOOD
 YEAR BUILT: 1959
 STRUCTURE FILE NO. 4304411
 DISPOSITION: DECK TO BE REPLACED, SUPERSTRUCTURE AND SUBSTRUCTURE REPAIRED, AND REUSED.

PROPOSED STRUCTURE (NORTHBOUND)

PROPOSED WORK: NEW REINFORCED CONCRETE COMPOSITE DECK ON REUSED STEEL RIVETED, BUILT-UP PLATE GIRDERS AND REUSED REINFORCED CONCRETE SUBSTRUCTURE UNITS.

SPAN: 20 117±; 33 528±; 26 518± & 15 900± mm.
 ROADWAY: 16 486 mm TOE TO TOE OF PARAPETS
 LOADING: MS 18 AND ALTERNATE MILITARY LOADING
 SKEW: NONE
 WEARING SURFACE: 25 mm MONOLITHIC CONCRETE
 APPROACH SLAB: 7600 mm LONG (AS-1-81M)
 ALIGNMENT: (I-90) 662 482 mm RT. CURVE; (S.R. 44) TANGENT
 LATITUDE: 41°40'14" N
 LONGITUDE: 81°14'49" E
 CROWN RATE: 0.016

◆ - POINT OF MINIMUM VERTICAL CLEARANCE