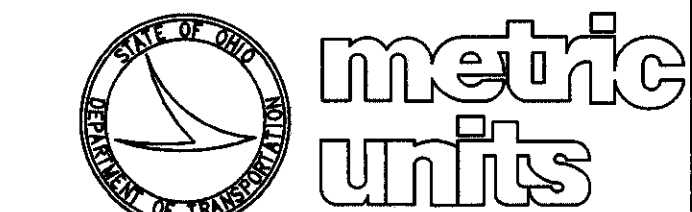
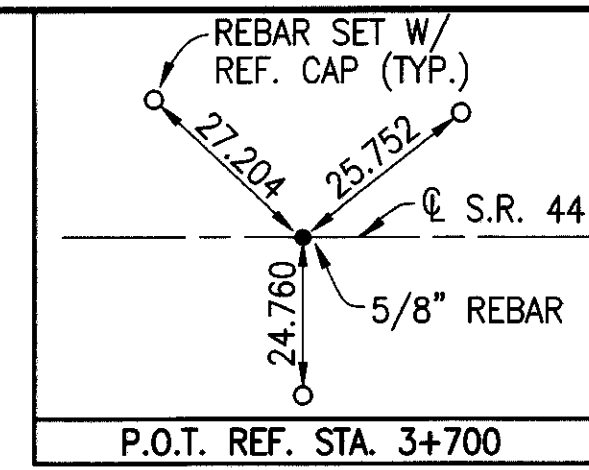


NOTE: EXISTING PAVEMENT ELEVATIONS AWAY FROM THE BRIDGES WERE RAISED 0.024 m TO APPROXIMATE PAVEMENT RESURFACING TO BE PERFORMED IN 1999.

DIAGONAL HATCHING DENOTES WEARING COURSE REMOVED AND RESURFACING



NOTE: ALL DIMENSIONS ARE IN METERS UNLESS OTHERWISE NOTED.



CALCULATED  
 EEL 9/99

CHECKED  
 DAW 9/99

PLAN AND PROFILE  
 STA. 3+700 TO STA. 3+800

LAK-90-23.609/23.641

**BEGIN WORK**  
 STA. 3+576.5

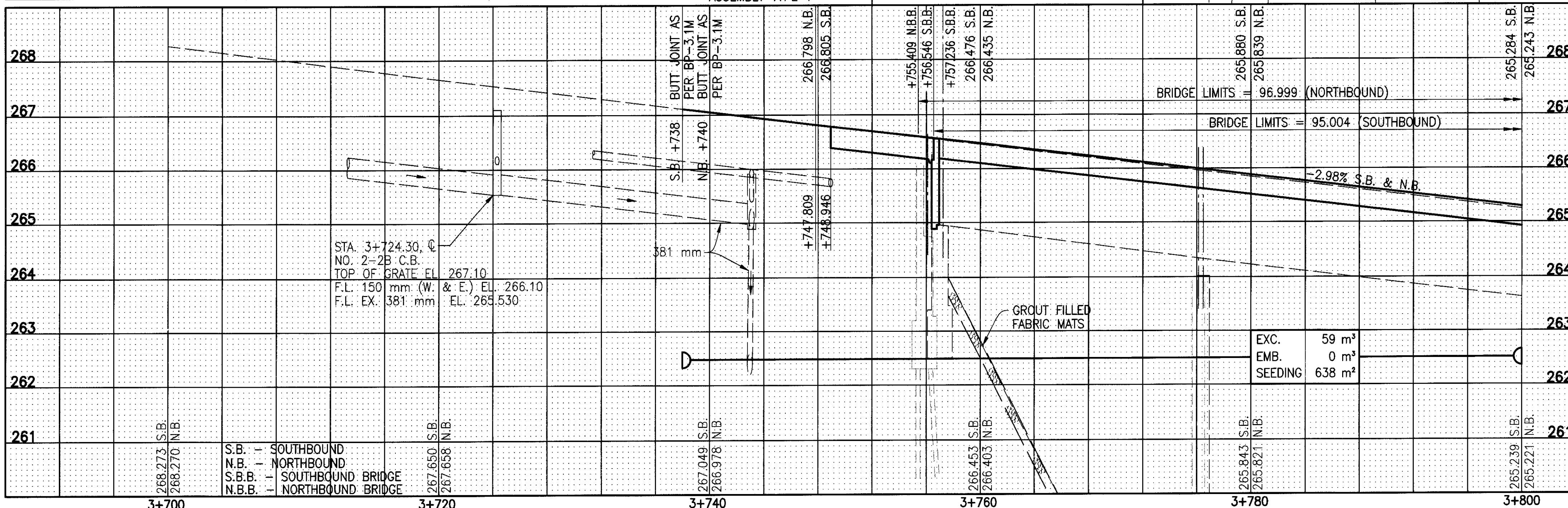
**BEGIN PROJECT**  
 STA. 3+747.809

**EXISTING STRUCTURE (SOUTHBOUND)**  
 TYPE: REINFORCED CONCRETE DECK ON CONTINUOUS RIVETED, BUILT-UP STEEL PLATE GIRDERS AND REINFORCED CONCRETE SUBSTRUCTURE.  
 SPAN: 19 202±; 32 004±; 26 518± & 15 900± mm.  
 ROADWAY: 12 090± mm FACE TO FACE OF CURB  
 LOADING: CF 2000  
 SKEW: NONE  
 WEARING SURFACE: 100± mm ASPHALT  
 APPROACH SLAB: 7620± mm (AS-1-54)  
 ALIGNMENT: TANGENT (S.R. 44); 2'38"10" RT. CURVE (I-90)  
 CONDITION: DECK POOR, REMAINDER GOOD  
 YEAR BUILT: 1959  
 STRUCTURE FILE NO. 4304381  
 DISPOSITION: DECK TO BE REPLACED, SUPERSTRUCTURE AND SUBSTRUCTURE REPAIRED, AND REUSED.

**EXISTING STRUCTURE (NORTHBOUND)**  
 TYPE: REINFORCED CONCRETE DECK ON CONTINUOUS RIVETED, BUILT-UP STEEL PLATE GIRDERS AND REINFORCED CONCRETE SUBSTRUCTURE.  
 SPAN: 20 117±; 33 528±; 26 518± & 15 900± mm.  
 ROADWAY: 15 748± mm FACE TO FACE OF CURB  
 LOADING: CF 2000  
 SKEW: NONE  
 WEARING SURFACE: 100± mm ASPHALT  
 APPROACH SLAB: 7620± mm (AS-1-54)  
 ALIGNMENT: TANGENT (S.R. 44); 2'38"10" RT. CURVE (I-90)  
 CONDITION: DECK POOR, REMAINDER GOOD  
 YEAR BUILT: 1959  
 STRUCTURE FILE NO. 4304411  
 DISPOSITION: DECK TO BE REPLACED, SUPERSTRUCTURE AND SUBSTRUCTURE REPAIRED, AND REUSED.

**PROPOSED STRUCTURE (SOUTHBOUND)**  
 LAK-90-23609(1467)  
 PROPOSED WORK: NEW REINFORCED CONCRETE COMPOSITE DECK ON REUSED STEEL RIVETED, BUILT-UP PLATE GIRDERS AND REUSED REINFORCED CONCRETE SUBSTRUCTURE UNITS.  
 SPAN: 19 202±; 32 004±; 26 518± & 15 900± mm.  
 ROADWAY: 12 826 mm TOE TO TOE OF PARAPETS  
 LOADING: MS 18 AND ALTERNATE MILITARY LOADINGS  
 SKEW: NONE  
 WEARING SURFACE: 25 mm MONOLITHIC CONCRETE  
 APPROACH SLAB: 7600 mm LONG (AS-1-81M)  
 ALIGNMENT: (I-90) 662 482 mm RT. CURVE; (S.R. 44) TANGENT  
 LATITUDE: 41°40'13" N  
 LONGITUDE: 81°14'50" E  
 CROWN RATE: 0.016

**PROPOSED STRUCTURE (NORTHBOUND)**  
 LAK-90-23641(1469)  
 PROPOSED WORK: NEW REINFORCED CONCRETE COMPOSITE DECK ON REUSED STEEL RIVETED, BUILT-UP PLATE GIRDERS AND REUSED REINFORCED CONCRETE SUBSTRUCTURE UNITS.  
 SPAN: 20 117±; 33 528±; 26 518± & 15 900± mm.  
 ROADWAY: 16 486 mm TOE TO TOE OF PARAPETS  
 LOADING: MS 18 AND ALTERNATE MILITARY LOADINGS  
 SKEW: NONE  
 WEARING SURFACE: 25 mm MONOLITHIC CONCRETE  
 APPROACH SLAB: 7600 mm LONG (AS-1-81M)  
 ALIGNMENT: (I-90) 662 482 mm RT. CURVE; (S.R. 44) TANGENT  
 LATITUDE: 41°40'14" N  
 LONGITUDE: 81°14'49" E  
 CROWN RATE: 0.016



REF. NO.	STATION		SIDE	QUANTITY	UNIT	TOTALS
	FROM	TO				
1-GR	3+741.936	3+748.556	LT.	1	EACH	1
2-GR	3+738.924	3+748.449	RT.	1	EACH	1
3-GR	3+738.924	3+748.449	RT.	1	EACH	1
1-RCP	3+757.6	3+770.7	LT.	1	EACH	1
2-RCP	3+756.5	3+770.4	RT.	1	EACH	1
1-D	3+723.6	3+725.4	Q & LT.	1	EACH	1
2-D	3+722.7	3+724.3	RT.	1	EACH	1
1-BR	3+751	3+777.5	LT.	1	EACH	1
2-BR	3+750	3+777	RT.	1	EACH	1
1-R	3+749		RT.	1	EACH	1
2-R	3+749		RT.	1	EACH	1
TOTALS CARRIED TO GENERAL SUMMARY				33		33

STATION	FROM	TO	QUANTITY	UNIT	TOTALS
268					268
267					267
266					266
265					265
264					264
263					263
262					262
261					261
TOTALS CARRIED TO GENERAL SUMMARY					