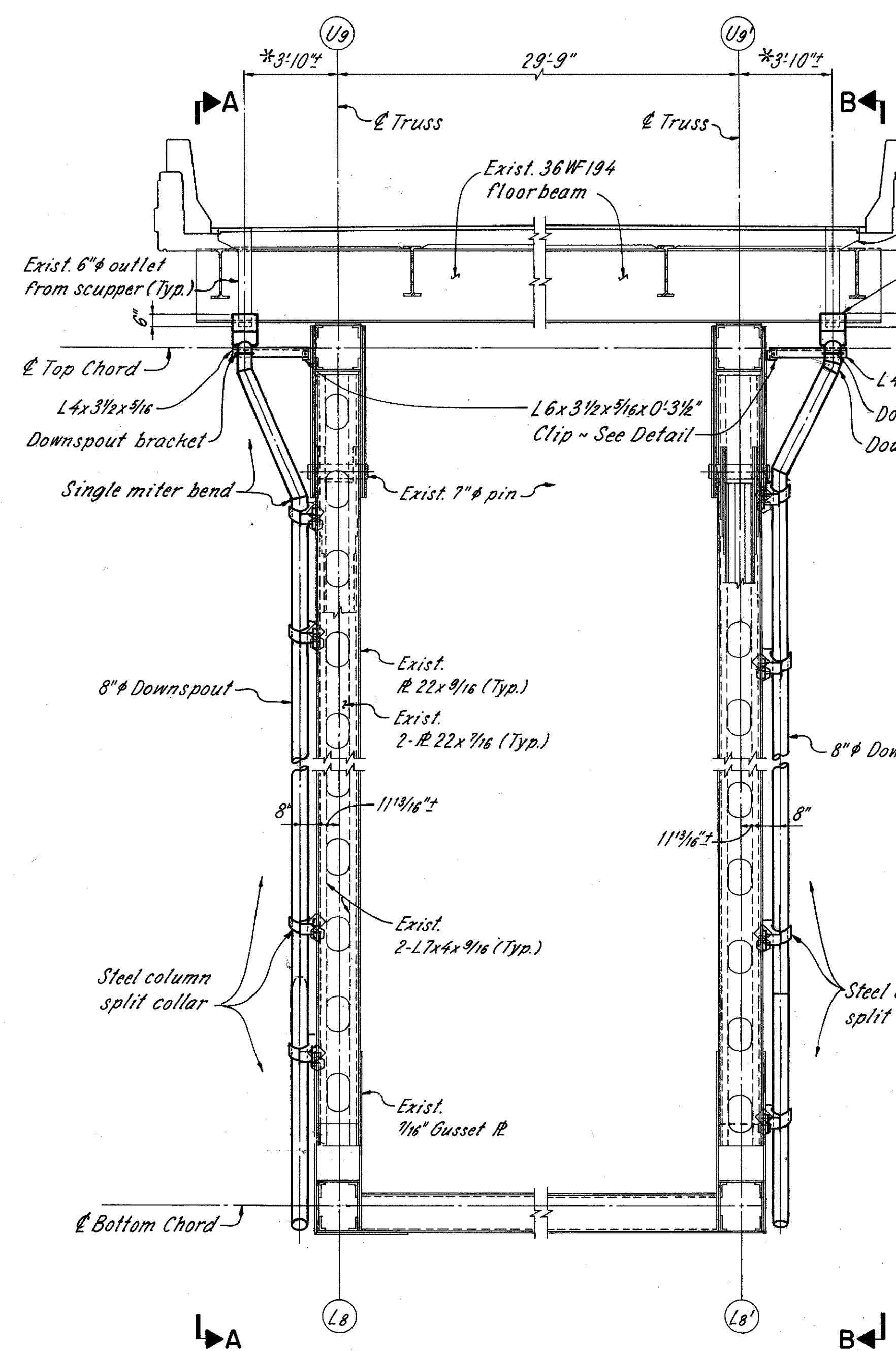
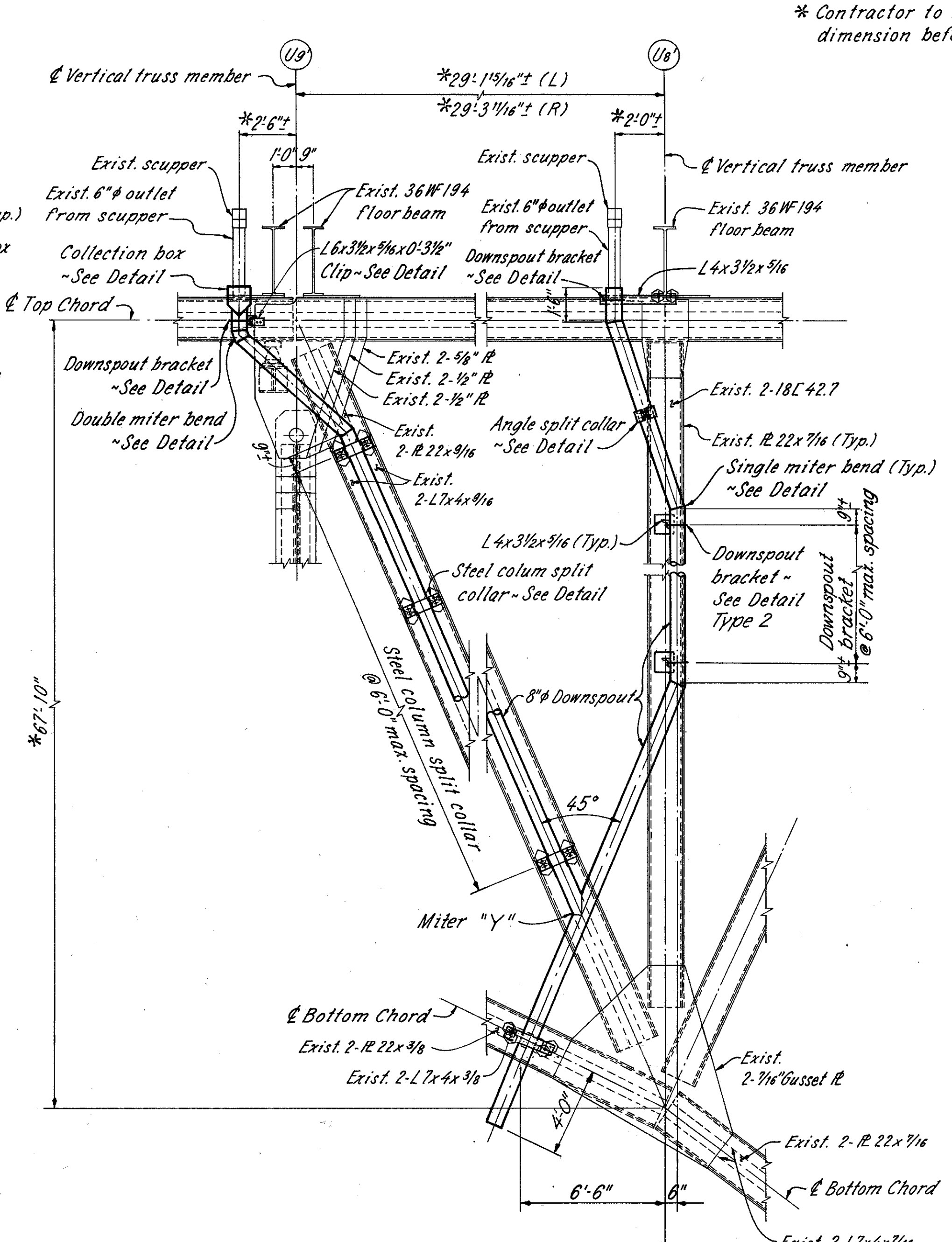


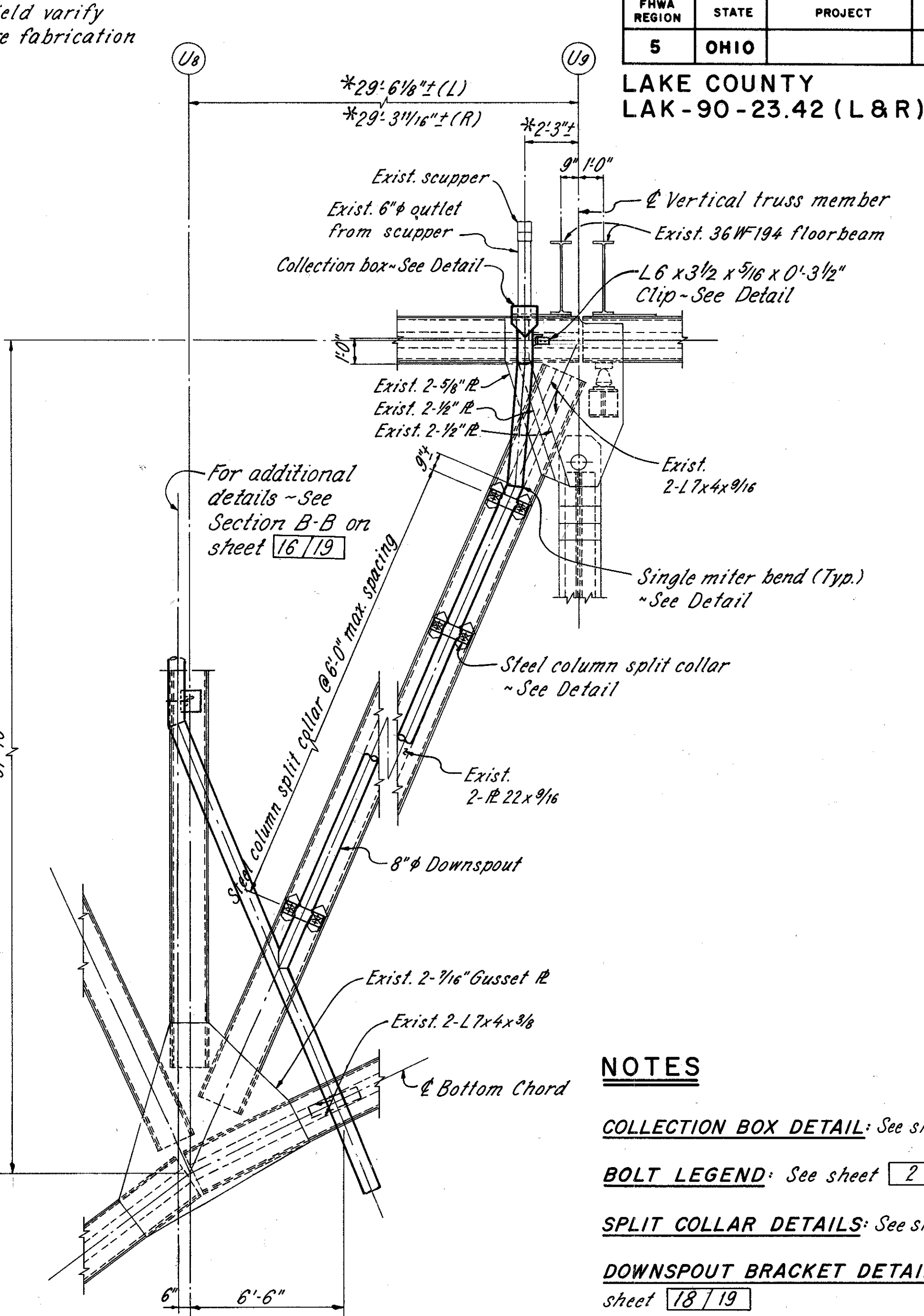
* Contractor to field verify dimension before fabrication



L8U9 (L&R) L8'U9' (L&R)
HALF TRANSVERSE SECTION
(WITH CATWALK REMOVED)



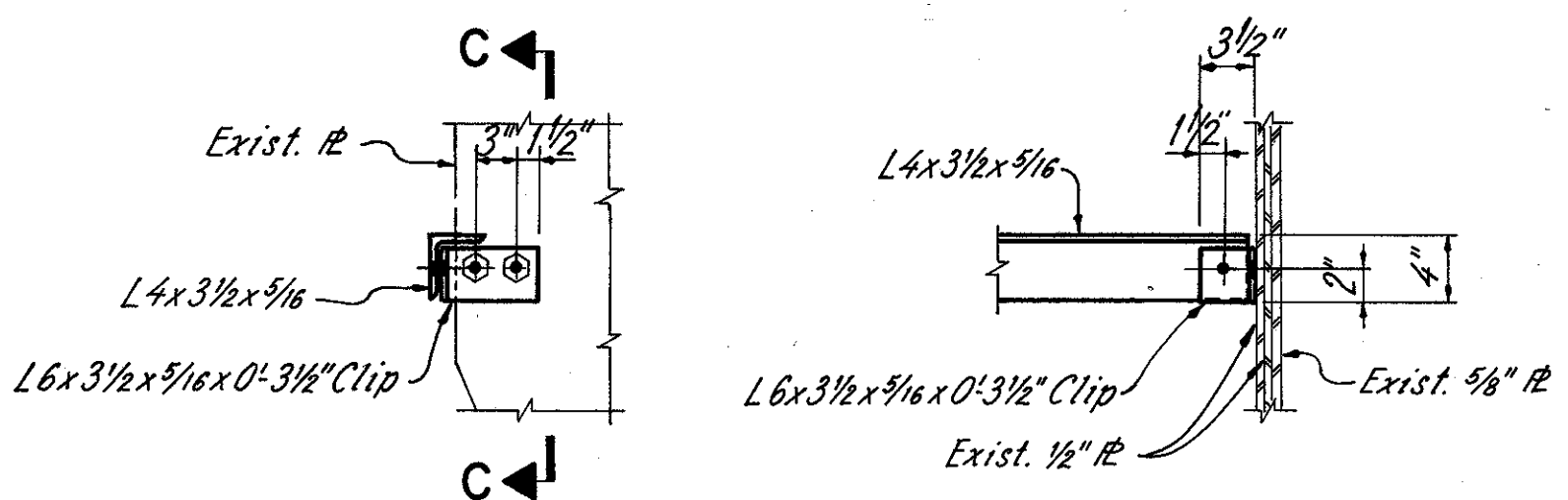
SECTION B-B
L8'U8' & L8'U9' (S)-AS SHOWN (L&R)
L8'U8' & L8'U9' (N)-OPPOSITE HAND (L&R)



SECTION A-A
L8U9 (S)-AS SHOWN (L&R)
L8U9 (N)-OPPOSITE HAND (L&R)

NOTES

- COLLECTION BOX DETAIL: See sheet 18/19.
- BOLT LEGEND: See sheet 2/19.
- SPLIT COLLAR DETAILS: See sheet 18/19.
- DOWNSPOUT BRACKET DETAILS: See sheet 18/19.
- NOTATION: N- North, S- South, L- Left Bridge (Westbound), R- Right Bridge (Eastbound)
- SINGLE & DOUBLE MITER BEND DETAILS: See sheet 18/19.
- ADDITIONAL NOTES: See sheet 18/19.



SECTION C-C
CLIP ANGLE DETAIL

		RICHLAND ENGINEERING LIMITED MANSFIELD, OHIO	
DRAINAGE DETAILS AT VERTICALS			
SUPERSTRUCTURE BRIDGE NO. LAK-90-2342 (L&R) OVER THE GRAND RIVER			
DESIGNED	DRAWN	TRACED	CHECKED
DHT	KH	KH	DT
REVIEWED	DATE	REVISED	
DAP	9/13/89		