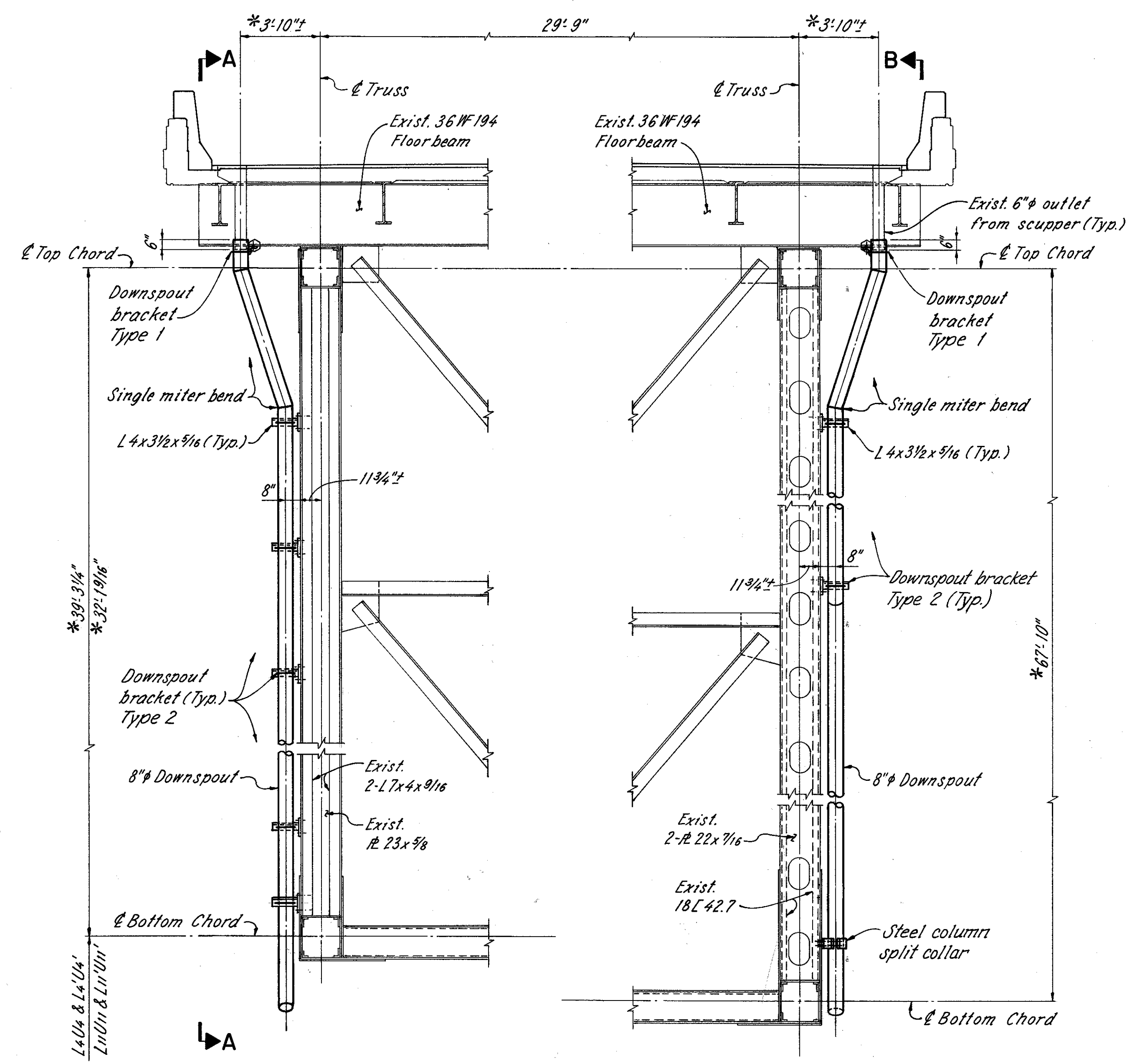


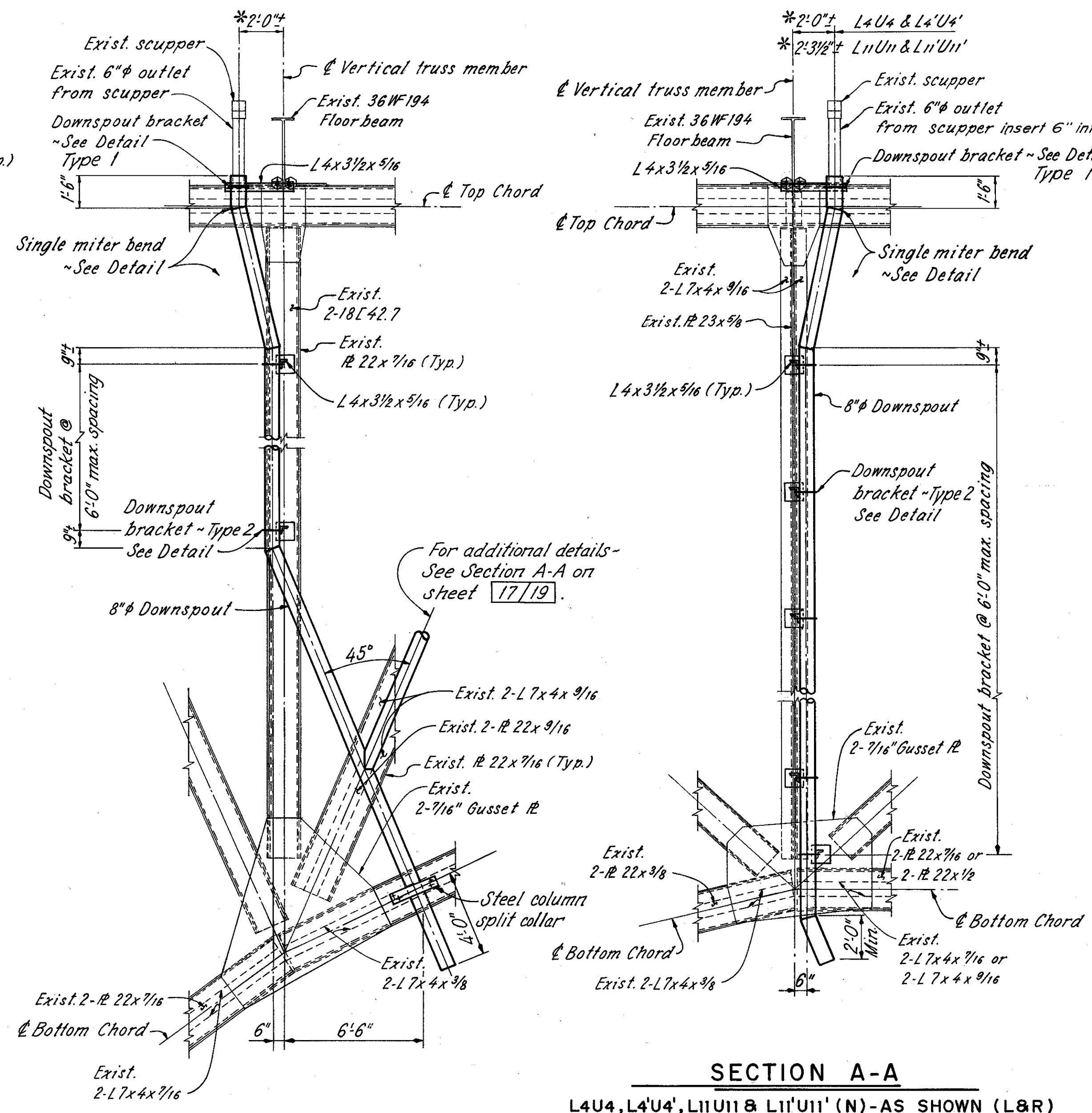
\* Contractor to field verify dimension before fabrication



L4U4, L4'U4', L1I'U1I & L1I'U1I' (L & R)

L8U8 & L8'U8' (L & R)

**HALF TRANSVERSE SECTION**



**SECTION B-B**

L8U8 (S) - AS SHOWN (L&R)  
L8U8 (N) - OPPOSITE HAND (L&R)  
L8'U8' - SEE SECTION B-B ON SHEET 17/19

**SECTION A-A**

L4U4, L4'U4', L1I'U1I & L1I'U1I' (N) - AS SHOWN (L&R)  
L4U4, L4'U4', L1I'U1I & L1I'U1I' (S) - OPPOSITE HAND (L&R)

**NOTES**

- BOLT LEGEND:** See sheet 2/19.
- DOWNSPOUT BRACKETS TYPE 1 & 2:** See sheet 18/19.
- NOTATION:** N-- North  
S-- South  
L-- Left Bridge (Westbound)  
R-- Right Bridge (Eastbound)
- SINGLE MITER BEND DETAIL:** See sheet 18/19.
- SPLIT COLLAR DETAILS:** See sheet 18/19.
- ADDITIONAL NOTES:** See sheet 18/19.

**RE** RICHLAND ENGINEERING LIMITED  
MANSFIELD, OHIO

**DRAINAGE DETAILS AT VERTICALS**  
**SUPERSTRUCTURE**  
**BRIDGE NO. LAK-90-2342 (L&R)**  
**OVER THE GRAND RIVER**

DESIGNED	DHT	DRAWN	KH	TRACED	KH	CHECKED	DT	REVIEWED	DAP	DATE	9/13/89	REVISIONS
----------	-----	-------	----	--------	----	---------	----	----------	-----	------	---------	-----------