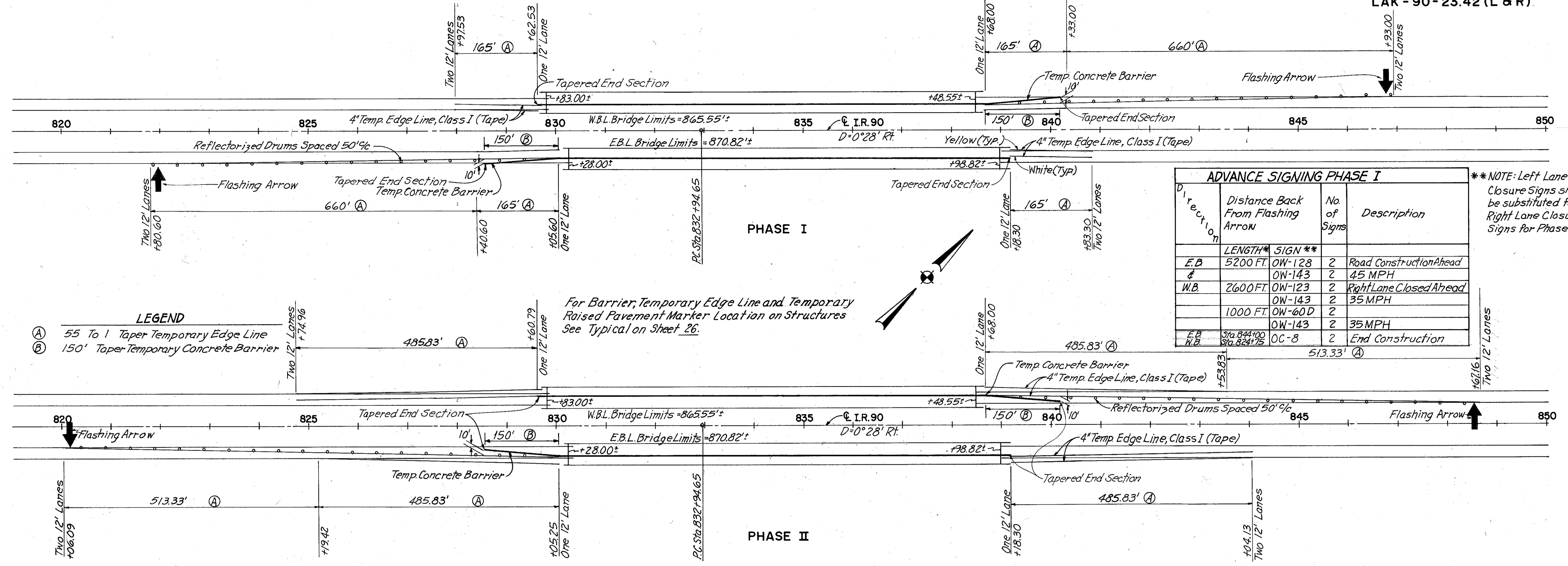


TRAFFIC CONTROL

QUANTITIES		PHWA REGION	STATE	PROJECT
CALCULATED	J.H. 5-88	3	OHIO	
CHECKED	J.D. 5-88			

LAKE COUNTY
LAK-90-23.42 (L & R)



- LEGEND**
- (A) 55 To 1 Taper Temporary Edge Line
 - (B) 150' Taper Temporary Concrete Barrier

ADVANCE SIGNING PHASE I			
Direction	Distance Back From Flashing Arrow	No. of Signs	Description
E.B.	5200 FT.	2	Road Construction Ahead
	1000 FT.	2	45 MPH
W.B.	2600 FT.	2	Right Lane Closed Ahead
	1000 FT.	2	35 MPH
E.B.	513.33'	2	End Construction
	513.33'	2	35 MPH

**NOTE: Left Lane Closure Signs shall be substituted for Right Lane Closure Signs for Phase II.

ITEM 622 TEMPORARY CONCRETE BARRIER		
PHASE I		
Sta. 828+55.60 to Sta. 830+05.60 E.B.L.	150 L.F.	
Sta. 838+68.00 to Sta. 840+18.00 W.B.L.	150 L.F.	
PHASE II		
Sta. 828+55.25 to Sta. 830+05.25 E.B.L.	150 L.F.	
Sta. 838+68.00 to Sta. 840+18.00 W.B.L.	150 L.F.	
Total =	600 L.F.	

ITEM 622-TEMPORARY CONCRETE BARRIER TYPE BRD, ANCHORED, AS PER PLAN		
PHASE I		
Sta. 830+05.60 to Sta. 839+18.30 E.B.L.	910 L.F.	
Sta. 829+62.53 to Sta. 838+68.00 W.B.L.	910 L.F.	
PHASE II		
Sta. 830+05.25 to Sta. 839+18.30 E.B.L.	910 L.F.	
Sta. 829+60.79 to Sta. 838+68.00 W.B.L.	910 L.F.	
Total =	3,640 L.F.	

PERMANENT PAVEMENT MARKING		
Item 621 Edge Lines		
Sta. 825+19.42 to Sta. 844+04.13 E.B.L.	White	1,885 L.F.
Sta. 828+40.60 to Sta. 840+83.30 E.B.L.	White	1,243 L.F.
Sta. 824+74.96 to Sta. 843+53.83 W.B.L.	White	1,879 L.F.
Sta. 827+97.53 to Sta. 840+33.00 W.B.L.	Yellow	1,236 L.F.
Total =	3,764 L.F. White + 2,479 L.F. Yellow =	1.18 Miles
Item 621 Lane Lines		
Sta. 820+06.09 to Sta. 844+04.13 E.B.L.	White	2,398 L.F.
Sta. 824+74.90 to Sta. 848+67.16 W.B.L.	White	2,393 L.F.
Total =	4,791 L.F.	0.91 Miles

ITEM 621 REMOVAL OF PAVEMENT MARKINGS		
E.B.L.:		
Outside Edge Line Sta. 825+19.42 to Sta. 830+28.00 II	509 L.F.	
Sta. 838+98.82 to Sta. 844+04.13 II	505 L.F.	
Lane Line Sta. 820+06.09 to Sta. 830+28.00 II	1,022 L.F.	
Sta. 838+98.82 to Sta. 844+04.13 I	505 L.F.	
Inside Edge Line Sta. 828+40.60 to Sta. 840+83.30 I	1,242 L.F.	
W.B.L.:		
Outside Edge Line Sta. 824+74.90 to Sta. 829+83.00 II	508 L.F.	
Sta. 838+48.55 to Sta. 843+53.83 II	506 L.F.	
Lane Line Sta. 824+74.90 to Sta. 829+83.00 II	508 L.F.	
Sta. 838+48.55 to Sta. 848+67.16 II	1,019 L.F.	
Inside Edge Line Sta. 827+97.53 to Sta. 840+33.00 I	1,236 L.F.	
Total =	7,560 L.F.	1.43 Miles

ITEM 614 TEMPORARY EDGE LINE, CLASS I, 947.03 TYPE C		
PHASE I		
Outside Sta. 821+80.60 to Sta. 840+83.30 E.B.L.	White	1,903 L.F.
Inside Sta. 828+40.60 to Sta. 840+83.30 E.B.L.	White	1,243 L.F.
Outside Sta. 827+97.53 to Sta. 846+93.00 W.B.L.	White	1,896 L.F.
Inside Sta. 827+97.53 to Sta. 840+33.00 W.B.L.	Yellow	1,236 L.F.
PHASE II		
Outside Sta. 825+19.42 to Sta. 844+04.13 E.B.L.	White	1,885 L.F.
Inside Sta. 820+06.09 to Sta. 844+04.13 E.B.L.	White	2,398 L.F.
Outside Sta. 824+74.96 to Sta. 843+53.83 W.B.L.	White	1,879 L.F.
Inside Sta. 824+74.96 to Sta. 848+67.16 W.B.L.	White	2,393 L.F.
Total =	8,590 L.F. White + 6,243 L.F. Yellow =	2.81 Miles

Note: Above Existing Pavement Marking Removals are for Phase I and Phase II combined. Remove Existing Pavement Markings as required for Phase I only prior to putting Phase I into operation.

For Temporary Raised Pavement Marker Locations and Notes see sheet 18.

For Details of Temporary Concrete Barrier, Type BRD, Anchored, as per plan, See Sheet 17.