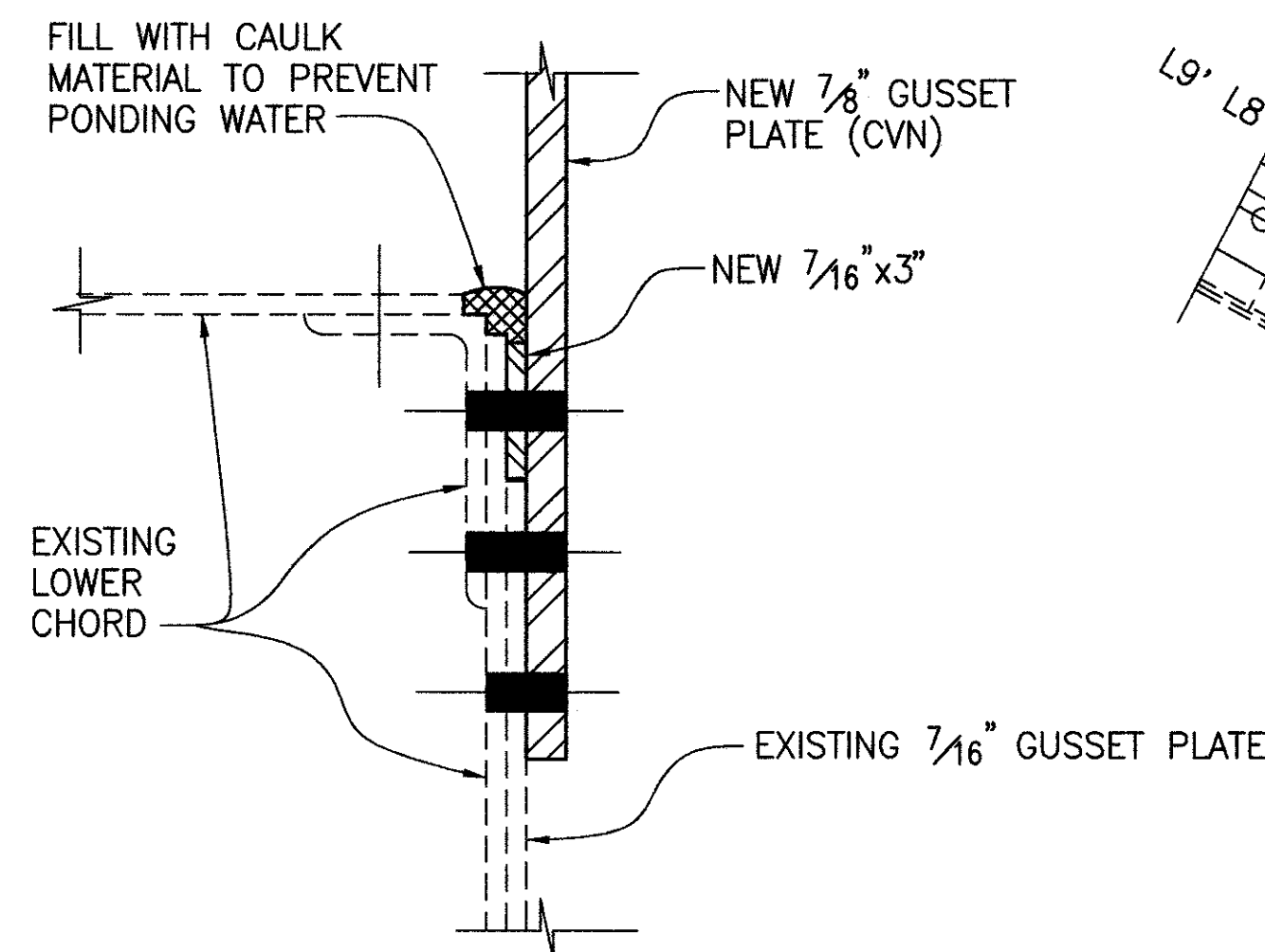
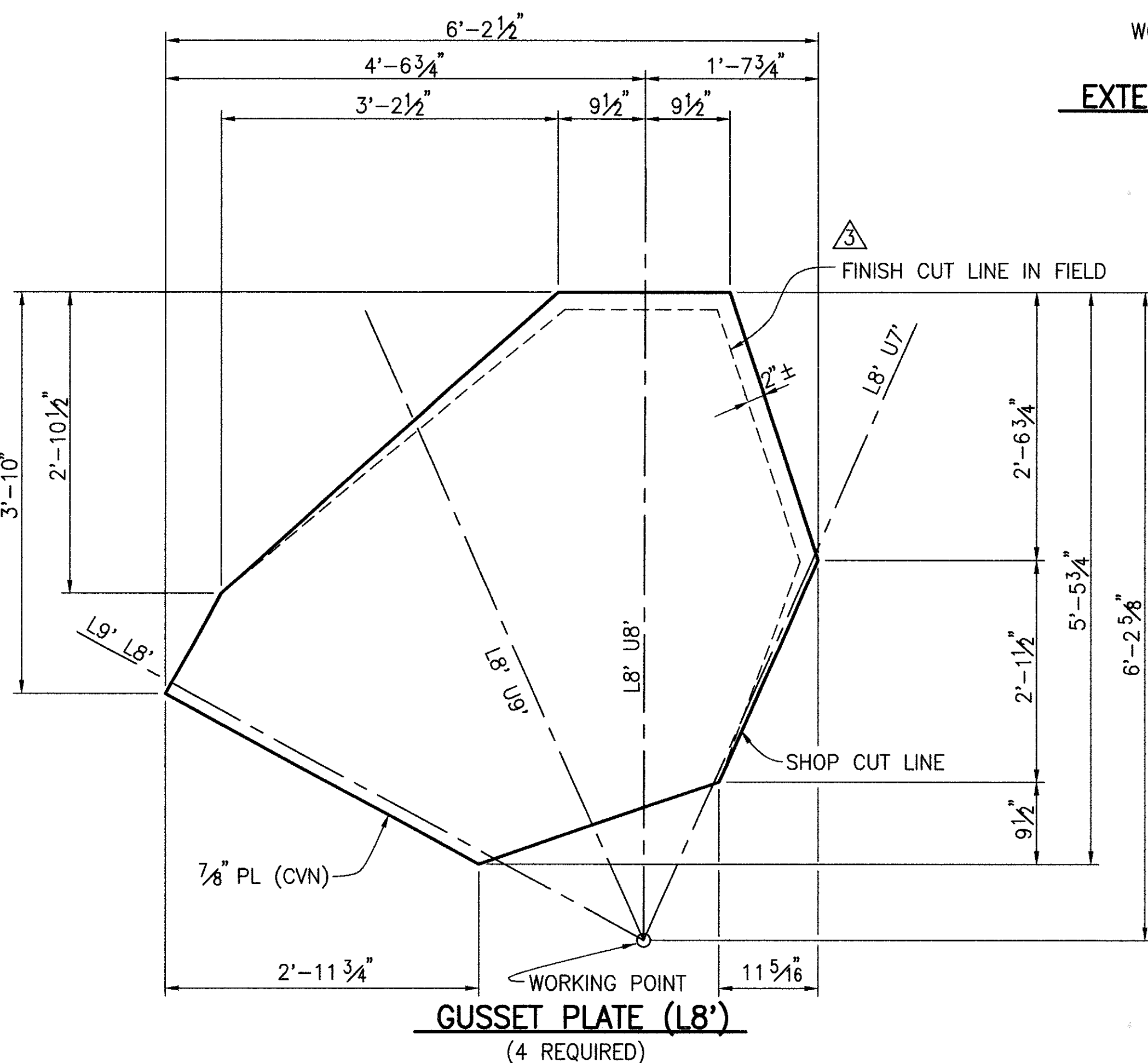


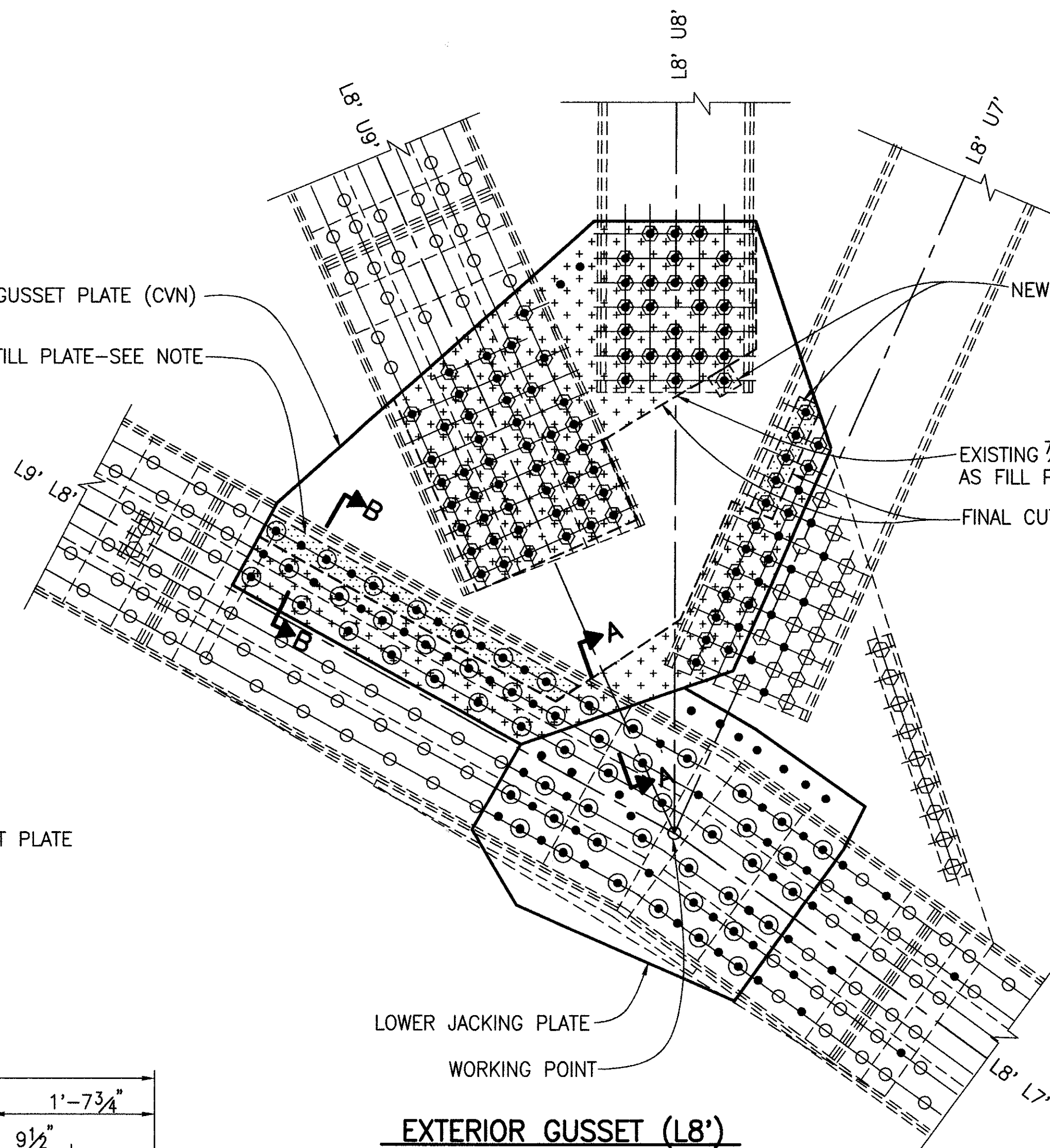
Job No. 960736D Date 3/12/97 Drawn By JPS, TWH, JLS



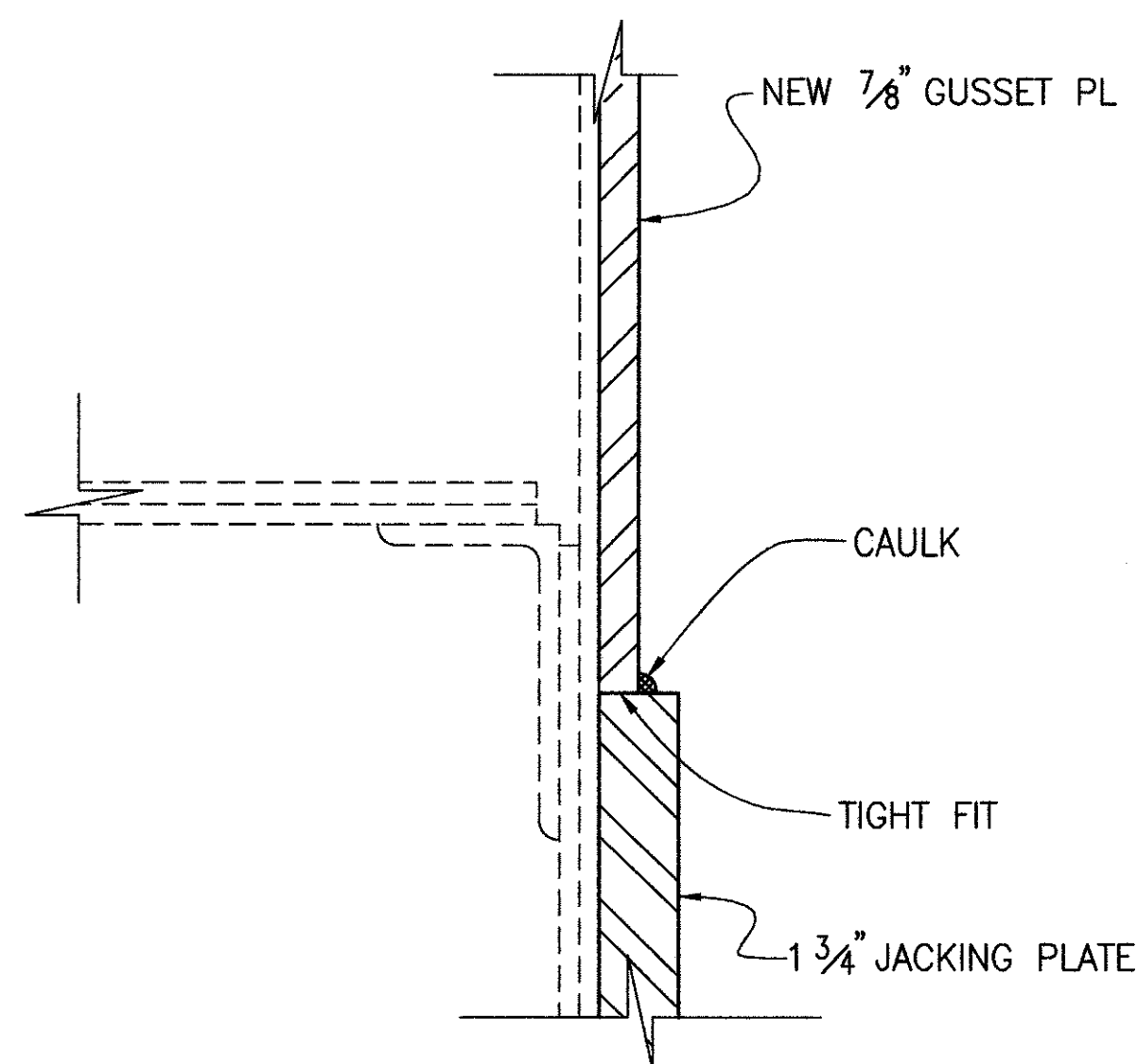
SECTION B-B



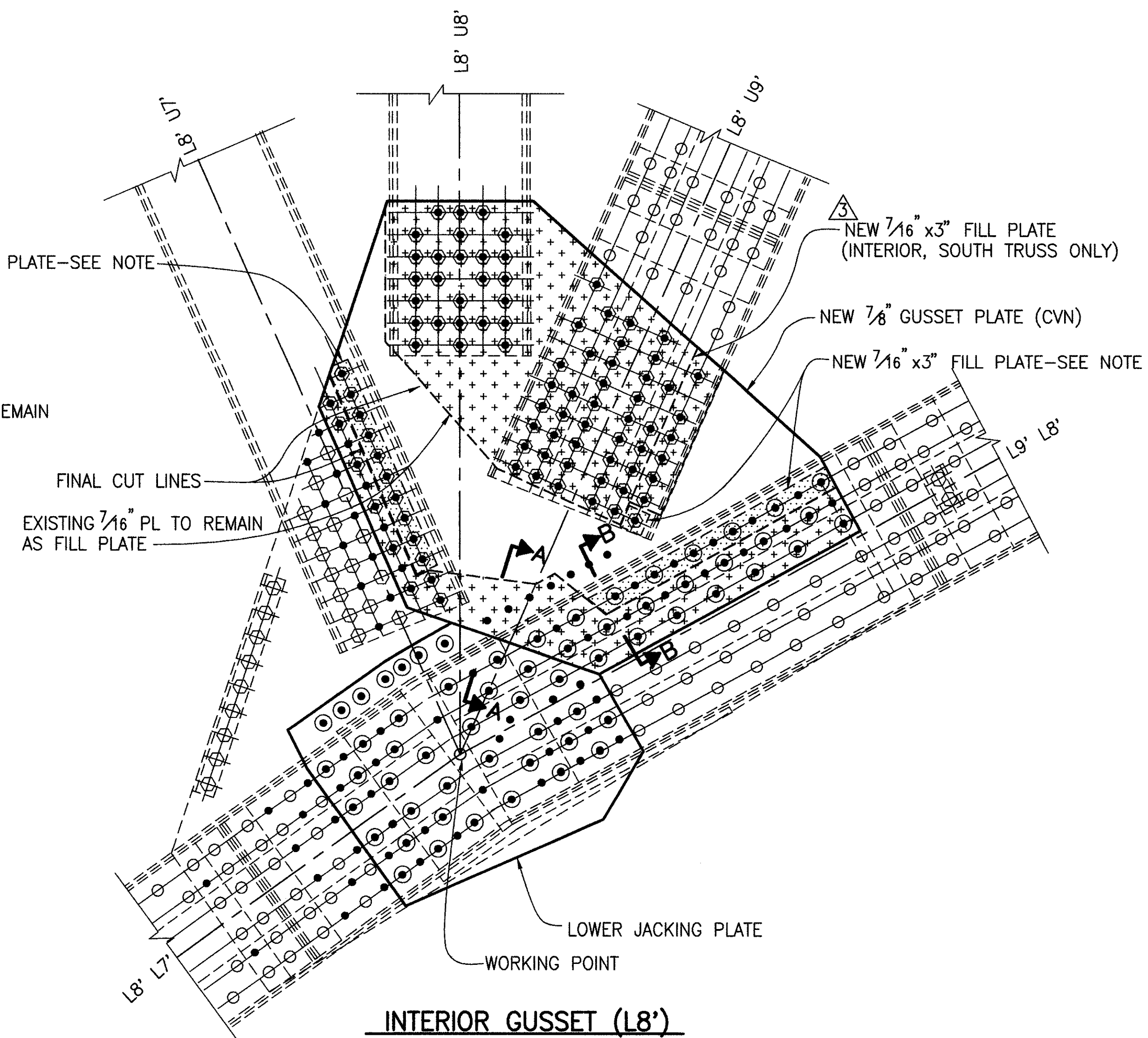
GUSSET PLATE (L8')  
(4 REQUIRED)



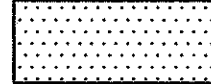

EXTERIOR GUSSET (L8')




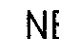

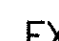

SECTION A-A



INTERIOR GUSSET (L8')

-  - INDICATES 7/16" x 3" FILL PLATES
-  - INDICATES 7/16" GUSSET PLATE TO REMAIN AS FILL PLATE

**BOLT LEGEND**

-  NEW BOLT IN NEW HOLE
-  NEW BOLT IN EXISTING BOLT HOLE
-  NEW BOLT IN EXISTING RIVET HOLE
-  EXISTING RIVET
-  EXISTING BOLT

**NOTES:**

MINIMUM EDGE DISTANCE FOR 7/8" BOLTS IS 1 1/2".

ULTRASONIC TESTING OF COMPLETE PENETRATION GROOVE WELD IS REQUIRED IN ACCORDANCE WITH AASHTO/AWS D1.5.

FILL PLATES: APPROXIMATELY 21 FEET OF 7/16" x 3" BAR STOCK WILL BE NEEDED FOR FILL PLATES (TOTAL FOR ALL FOUR LOCATIONS).

C.P. - COMPLETE PENETRATION.

CVN: WHERE A PLATE IS DESIGNATED (CVN) THE MATERIAL SHALL MEET THE SPECIFIED MINIMUM NOTCH TOUGHNESS REQUIREMENTS AS SPECIFIED IN 711.01.

RELEASED FOR FABRICATION 7/10/96

DATE	7/10/96
REVIEWED	DAP
STRUCTURE FILE NO.	4304985
DRAWN	JPS
CHECKED	DJM
DESIGNED	DLR
REVISION	2/20/97