

GUSSET PLATE RETROFIT

LO EXTERIOR

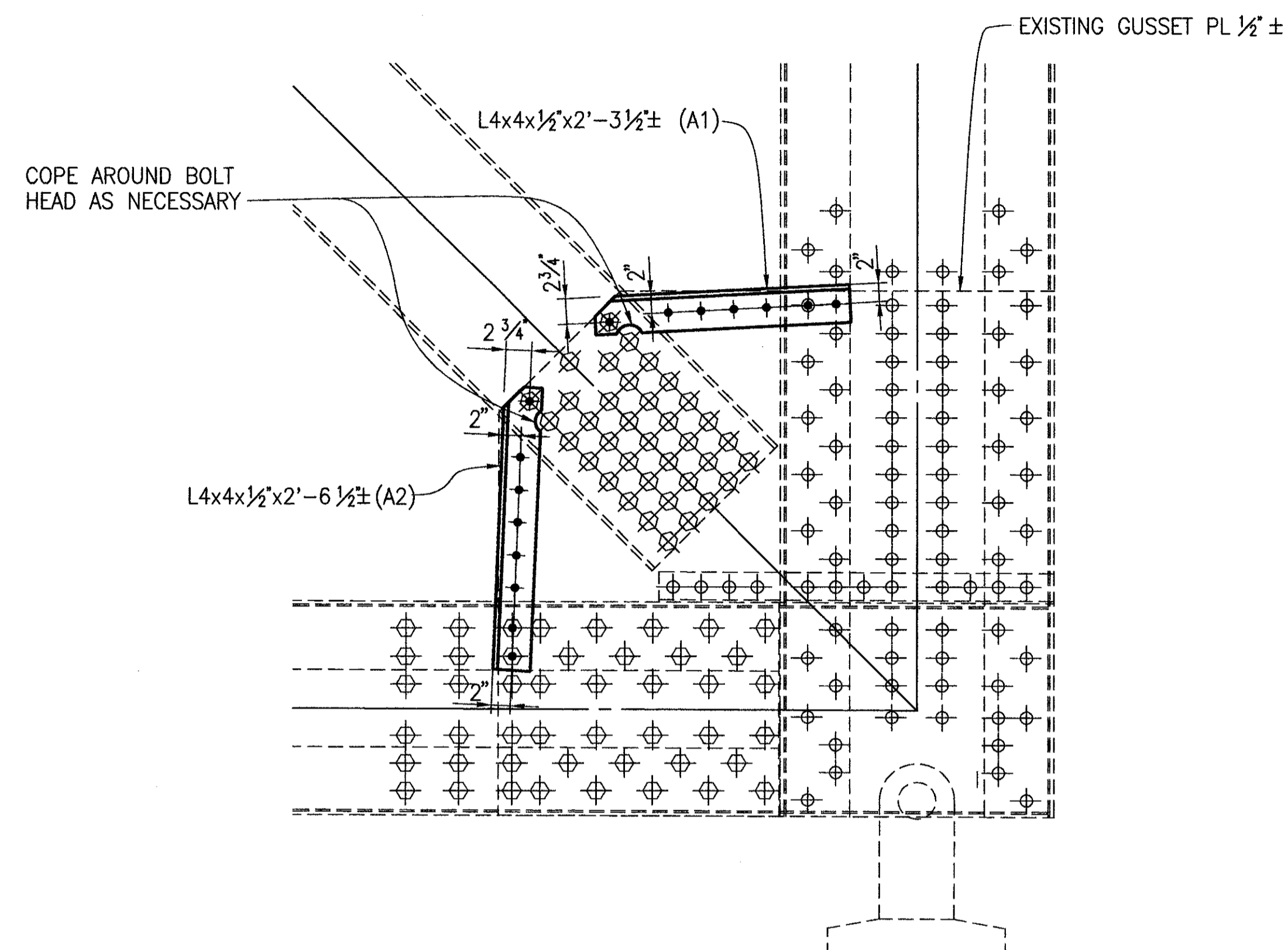
- WESTBOUND BRIDGE - 2 LOCATIONS
- △ EASTBOUND BRIDGE - 2 LOCATIONS

LO' EXTERIOR

- △ WESTBOUND BRIDGE - 2 LOCATIONS
- △ EASTBOUND BRIDGE - 2 LOCATIONS

NOTATION

- SLO - SHORT LEG OUTSTANDING
- LLO - LONG LEG OUTSTANDING
- ✦ - INDICATES NEW BOLT
- ⊕ - INDICATES EXISTING BOLT
- ⊕ - INDICATES EXISTING RIVET



GUSSET PLATE RETROFIT

LO INTERIOR

- WESTBOUND BRIDGE - 2 LOCATIONS
- △ EASTBOUND BRIDGE - 2 LOCATIONS

LO' INTERIOR

- △ WESTBOUND BRIDGE - 2 LOCATIONS
- △ EASTBOUND BRIDGE - 2 LOCATIONS

GENERAL NOTES

MATERIALS: STRUCTURAL STEEL ASTM A36
CONNECTION BOLTS ASTM A325, 7/8" DIAMETER, GALVANIZED.

HOLE LOCATIONS: MAXIMUM NEW HOLE SPACING SHALL BE 4". MINIMUM EDGE DISTANCE SHALL BE 1 1/4". MINIMUM END DISTANCE ON AN ANGLE SHALL BE 1 1/2".

CONSTRUCTION SEQUENCE AT EACH GUSSET PLATE: STIFFENER ANGLES SHALL BE INSTALLED IN THE ORDER OF SEQUENCE AS THEY ARE NUMBERED (A1, A2, ETC). ONLY ONE GUSSET ON ONE SIDE OF A TRUSS JOINT SHALL BE WORKED ON AT A TIME. EACH ANGLE SHALL BE COMPLETELY INSTALLED WITH ALL BOLTS PROPERLY TIGHTENED BEFORE ADDITIONAL RIVETS OR BOLTS ARE REMOVED, OR ADDITIONAL HOLES ARE DRILLED.

SHARP CORNERS: THE CORNERS OF THE OUTSTANDING LEGS OF THE ANGLES SHALL BE ROUNDED BY GRINDING.

DESIGNED	DAP	CHECKED	MSL
REVISION	DATE	REVISION	DATE
1	2/20/97	1	10/4/96
2	10/4/96	2	10/29/96

STRUCTURE FILE NO.	4304950 & 4304985
DATE	10/4/96
REVISION	DHT

RICHLAND ENGINEERING LIMITED
29 NORTH PARK STREET
MANSFIELD, OHIO 44902

**TRUSS GUSSET PLATE L0 & L0'
RETROFIT DETAILS**

LAK-90-23.42 L&R