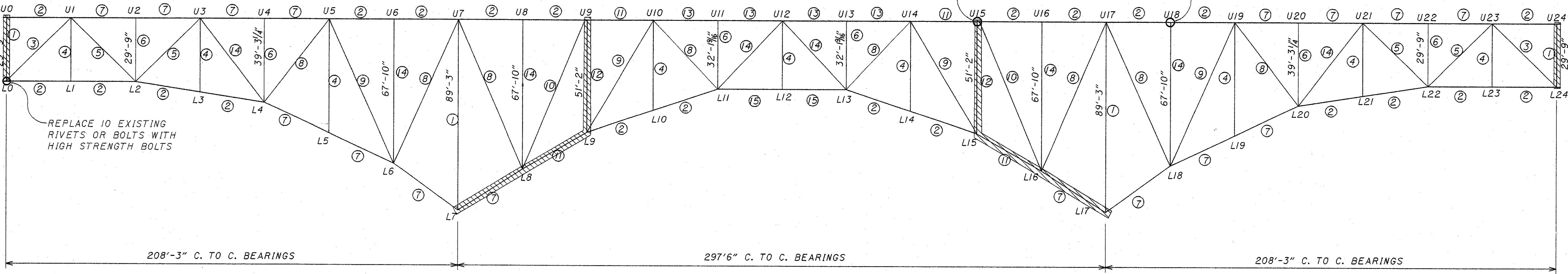


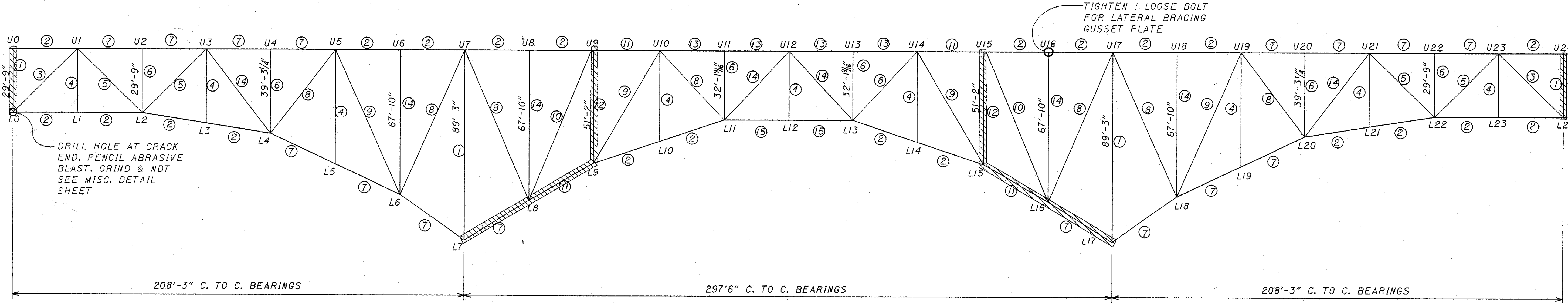
PLOTTED BY: ullman  
 PLOTTED FROM: c:\dgn\bridges\choma\lak90234.dcn  
 FILENAME: dgn



NORTH SIDE OF LEFT BRIDGE (FACING NORTH)

- |   |   |  |
|---|---|--|
| ① 2 COV. P-22X 7/16"<br>2 WEB P-23X 3/8"<br>4 L-7X4X 3/4" | ⑥ 4 L-7X4X 3/16"<br>1 P-23X 3/8"                            | ⑪ 2 COV. P-20X 3/8"<br>2 WEB P-22X 3/8"<br>4 L-7X4X 3/8"   |
| ② 2 COV. P-22X 3/8"<br>2 WEB P-22X 3/8"<br>4 L-7X4X 3/8"  | ⑦ 2 COV. P-22X 7/16"<br>2 WEB P-22X 7/16"<br>4 L-7X4X 1/16" | ⑫ 2 COV. P-22X 3/8"<br>2 WEB P-12X 3/8"<br>4 L-7X4X 3/8"   |
| ③ 2 COV. P-22X 1/16"<br>2 L-18X58.0                       | ⑧ 2 COV. P-22X 3/8"<br>2 L-18X51.9                          | ⑬ 2 COV. P-22X 1/16"<br>2 WEB P-22X 1/2"<br>4 L-7X4X 3/16" |
| ④ 4 L-7X4X 3/8"<br>1 P-23X 3/8"                           | ⑨ 2 COV. P-22X 7/16"<br>2 WEB P-22X 1/2"<br>4 L-7X4X 1/2"   | ⑭ 2 COV. P-22X 7/16"<br>2 L-18X42.7                        |
| ⑤ 2 L-18X42.7<br>2 COV. P-22X 3/8"                        | ⑩ 2 COV. P-22X 7/16"<br>2 WEB P-22X 1/16"<br>4 L-7X4X 9/16" | ⑮ 2 COV. P-22X 3/8"<br>2 WEB P-22X 1/2"<br>4 L-7X4X 9/16"  |

- HEAVY PACK RUST IN THESE AREAS.



SOUTH ELEVATION OF LEFT BRIDGE

REPLACE 10 EXISTING RIVETS OR BOLTS WITH HIGH STRENGTH BOLTS

REPLACE 10 EXISTING RIVETS OR BOLTS WITH HIGH STRENGTH BOLTS

TIGHTEN 2 LOOSE BOLTS FOR LATERAL BRACING GUSSET PLATE

TIGHTEN 1 LOOSE BOLT FOR LATERAL BRACING GUSSET PLATE

DRILL HOLE AT CRACK END, PENCIL ABRASIVE BLAST, GRIND & NDT SEE MISC. DETAIL SHEET

ALL EXISTING DIMENSIONS ARE ±

OHIO DEPARTMENT OF TRANSPORTATION DISTRICT 12 BRIDGE DEPT.	
DATE 6/24/94	REVIEWED GWM
STRUCTURE FILE NUMBER 4304950	DESIGNED BGW
REVISED 4304950	CHECKED DWL
DRAWN ABP	DESIGNED MFC
TRUSS ELEVATIONS LAK-90-2342L I-90 WB OVER THE GRAND RIVER	
LAKE COUNTY LAK-90-23.42	
8	