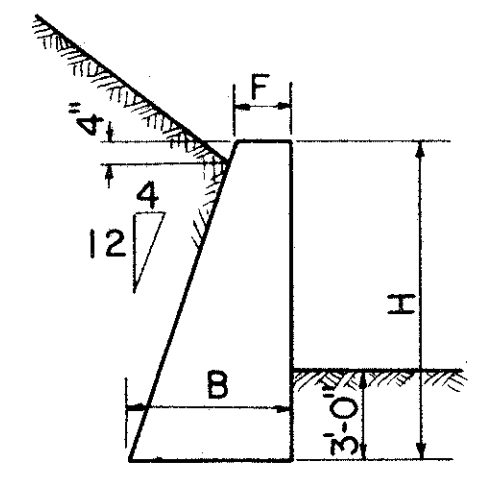
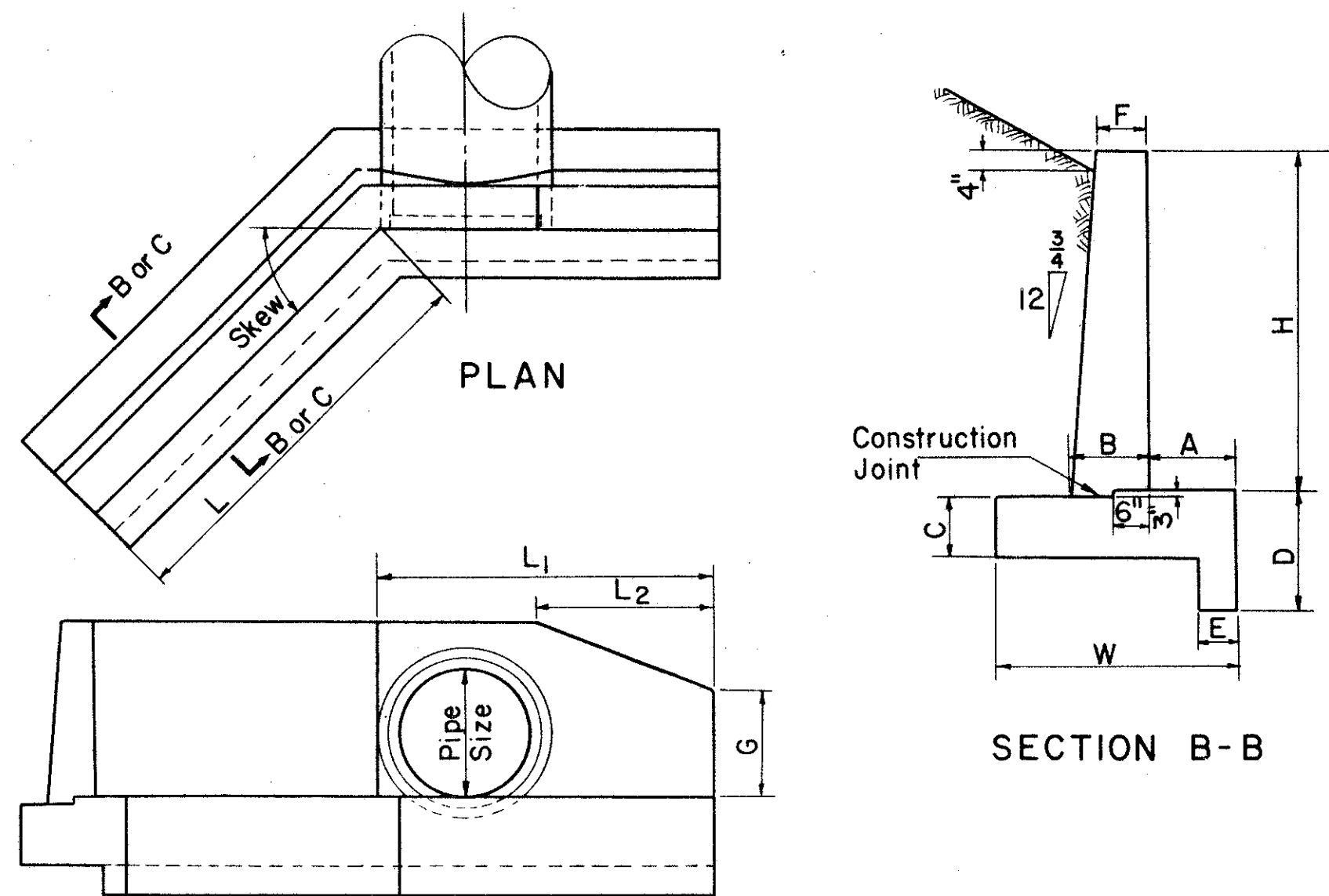


LAKE COUNTY
LAK-I-22.60

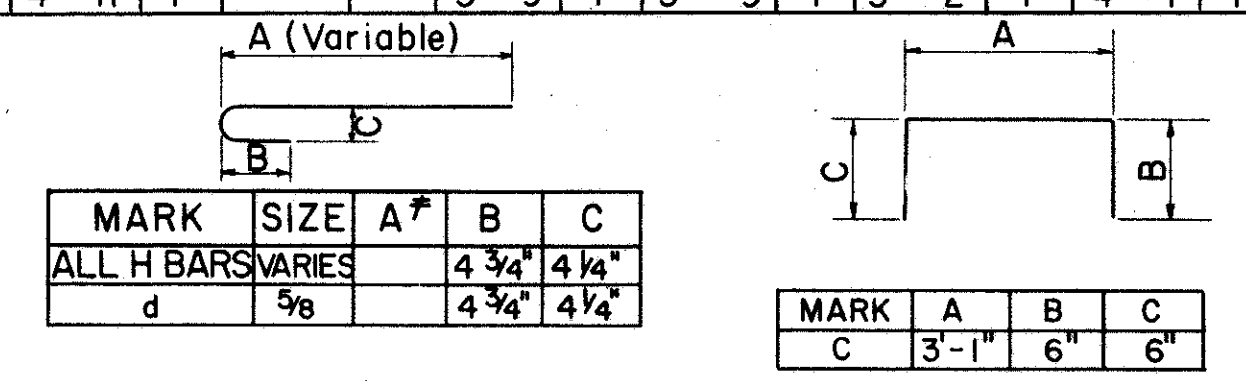
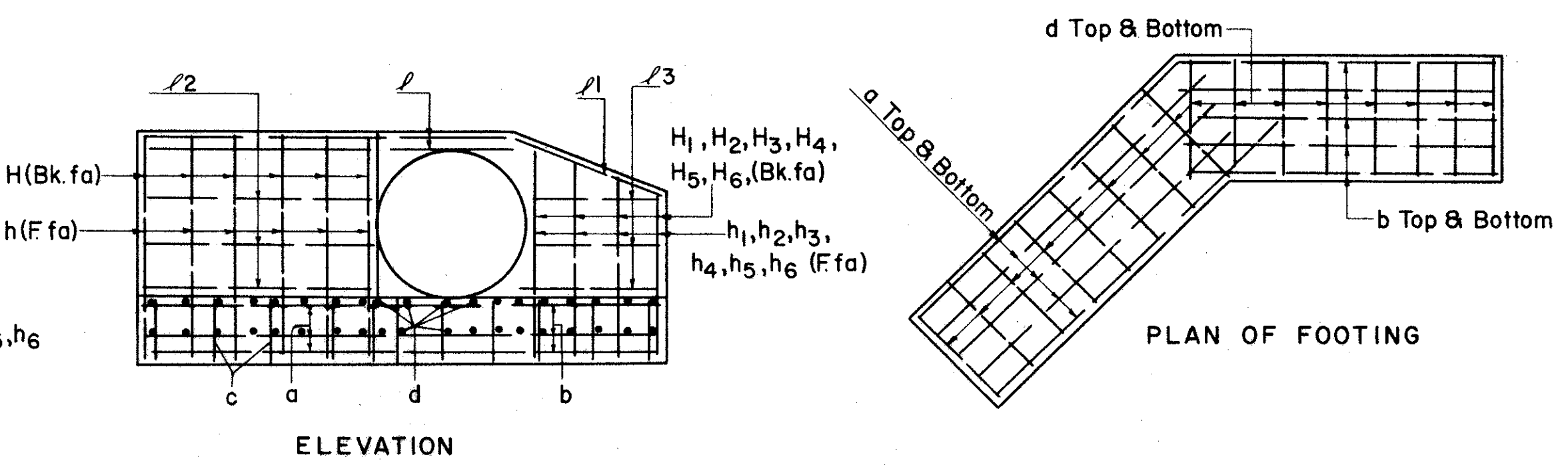
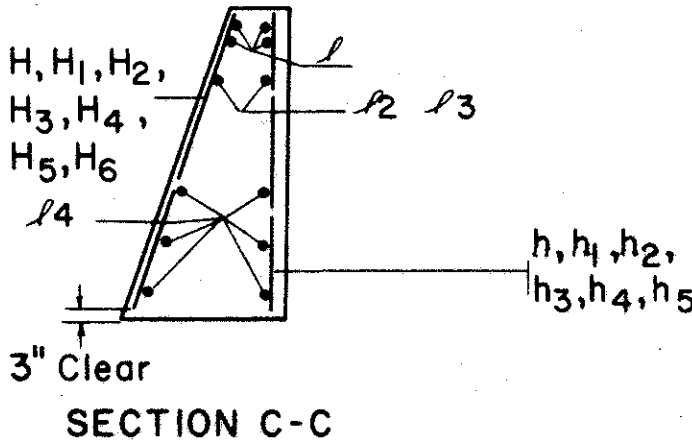
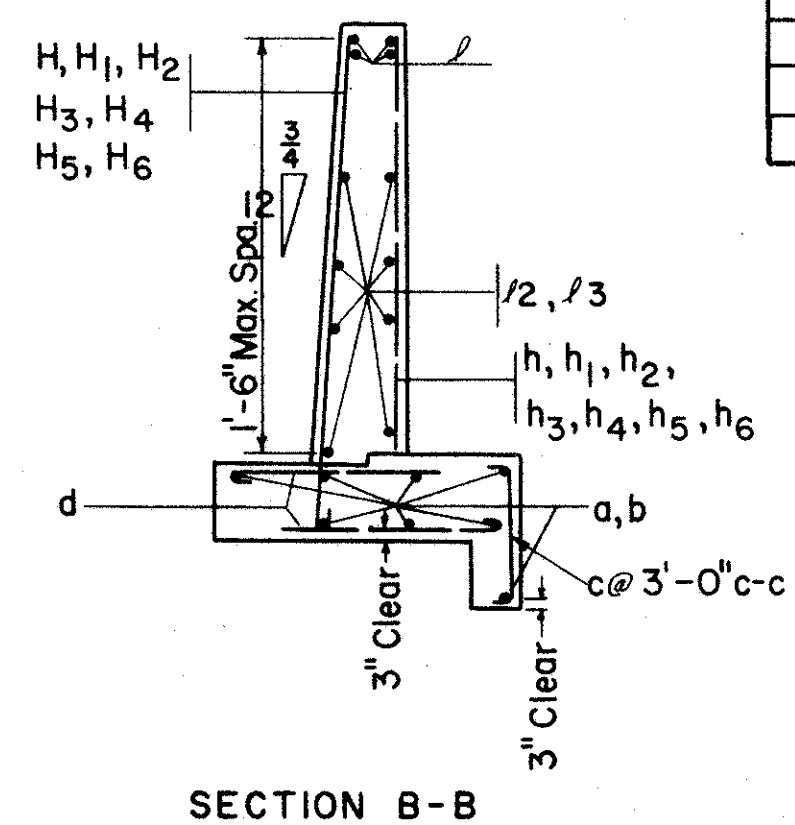
HEADWALL DIMENSIONS

STRUCTURE NO.	STATION*	PIPE SIZE	H	L	L ₁	L ₂	W	A	B	C	D	E	F	G
LAK-I-2320	870+65 L.&R	60"	6'-6"	11'-11"	15'-3"	9'-9"	5'-3"	1'-10 1/2"	1'-10 7/8"	1'-9"	3'-6"	1'-0"	1'-6"	5'-2 1/2"
LAK-I-2371	933+39 Lt.	24"	6'-0"	6'-6"	7'-0"	4'-9"	-	-	3'-0"	-	-	-	1'-0"	5'-8"
LAK-I-2371	933+39 Rt.	24"	6'-1"	5'-3"	6'-7"	4'-4"	-	-	3'-0 3/4"	-	-	-	1'-0"	5'-6"
LAK-I-2422	960+50 L.&R	36"	4'-3"	7'-7"	8'-7"	5'-3"	4'-0"	1'-2"	1'-9 1/4"	1'-9"	3'-6"	1'-0"	1'-6"	2'-8"
LAK-I-2437	968+56 Rt.	48"	5'-8"	11'-6"	10'-3"	5'-10"	4'-8"	1'-7"	1'-10 3/4"	1'-9"	3'-6"	1'-0"	1'-6"	3'-3"
LAK-I-2437	968+56 Lt.	48"	5'-8"	11'-8"	10'-3"	5'-10"	4'-8"	1'-7"	1'-10 3/4"	1'-9"	3'-6"	1'-0"	1'-6"	3'-3"
LAK-I-2486	994+00 Lt.	48"	5'-6"	9'-5"	9'-7"	5'-7"	4'-7"	1'-6"	1'-10 3/8"	1'-9"	3'-6"	1'-0"	1'-6"	4'-8"
LAK-I-2486	994+00 Rt.	48"	5'-6"	9'-2"	9'-9"	5'-8"	4'-7"	1'-6"	1'-10 3/8"	1'-9"	3'-6"	1'-0"	1'-6"	4'-0"
LAK-I-2542	1024+00 Lt.	42"	5'-3"	11'-8"	8'-6"	4'-7"	4'-6"	1'-5"	1'-10"	1'-9"	3'-6"	1'-0"	1'-6"	2'-8"
LAK-I-2542	1024+00 Rt.	42"	4'-3"	11'-3"	9'-10"	6'-0"	4'-3"	1'-3 1/2"	1'-9 1/2"	1'-9"	3'-6"	1'-0"	1'-6"	3'-4"
LAK-I-2624	8+51 Lt. & Rt.	42"	4'-9"	7'-6"	10'-0"	6'-1 1/2"	4'-3"	1'-3"	1'-9 3/4"	1'-9"	3'-6"	1'-0"	1'-6"	4'-6"
LAK-I-2637	15+28 Lt.(S.R.I)	42"	5'-0"	7'-5"	10'-1"	6'-3"	4'-4"	1'-4"	1'-9 3/4"	1'-9"	3'-6"	1'-0"	1'-6"	3'-6"
LAK-I-2637	15+28 Rt.(S.R.I)	42"	4'-9"	7'-6"	10'-0"	6'-1 1/2"	4'-3"	1'-3"	1'-9 3/4"	1'-9"	3'-6"	1'-0"	1'-6"	4'-6"
	Lt. Ramp J	42"	4'-10"	8'-6"	10'-2"	6'-3"	4'-4"	1'-4"	1'-9 1/2"	1'-9"	3'-6"	1'-0"	1'-6"	3'-6"
	Rt. Ramp I	42"	4'-8"	7'-8"	10'-11"	7'-1"	4'-3"	1'-3 1/2"	1'-9 3/4"	1'-9"	3'-6"	1'-0"	1'-6"	3'-11"
	843+50 Rt.	24"	6'-1"	6'-1"	6'-1"	3'-10"	-	-	3'-0"	-	-	-	1'-0"	5'-3"
	108+91 Rt. 307	48"	5'-7"	10'-4"	11'-3"	6'-10"	4'-8"	1'-7"	1'-10 3/4"	1'-9"	3'-6"	1'-0"	1'-6"	3'-9"
	108+91 Lt. 307	48"	5'-3"	8'-10"	12'-3"	7'-10"	4'-6"	1'-5"	1'-10"	1'-9"	3'-6"	1'-0"	1'-6"	4'-3"
	Dayton Rd. 13+83 Lt. & Rt.	48"	6'-1"	17'-3"	9'-1"	4'-7"	5'-0"	1'-9"	1'-10 3/4"	1'-9"	3'-6"	1'-0"	1'-6"	2'-8"
	8+41 Lt.	42"	4'-9"	9'-3"	10'-5"	6'-7"	4'-3"	1'-3 1/2"	1'-9 3/4"	1'-9"	3'-6"	1'-0"	1'-6"	3'-8"
	872+00 Rt.	21"	5'-11"	5'-8"	4'-10"	2'-10"	-	-	2'-11 3/8"	-	-	-	1'-0"	4'-9"
	988+50 Rt.	24"	6'-2"	6'-1"	5'-6"	3'-3"	-	-	3'-0 3/8"	-	-	-	1'-0"	5'-0"



REINFORCING STEEL LIST & CONCRETE QUANTITIES

STRUCTURE NO.	STATION*	PIPE SIZE	SKEW	a	b	c	d	l	l1	l2	l3	l4	H	H1	H2	H3	H4	h	h1	h2	h3	h4	S-4* REINFORCING STEEL LBS.	S-1* CLASS "C" CONCRETE CU.YDS.	STRUCTURE DETAILS SHEET NO.					
LAK-I-2320	870+65 L.&R	60"	8°	12-5	10	15-9	10	4-1	10	4-2	38	17-5	4	9-7	2	11-7	8	9-5	10							Cont.	1036	20.9		
LAK-I-2371	933+39 Lt.	24"	9°																											
LAK-I-2371	933+39 Rt.	24"	9°																											
LAK-I-2422	960+50 L.&R	36"	26°30'	8-1	8	9-1	8	4-1	7	2-11	24	10-7	4	5-1	2	7-3	6	4-11	6											
LAK-I-2437	968+56 Lt.	48"	28°00'	12-0	8	10-9	8	4-1	8	3-7	30	15-7	4	5-8	2	11-2	6	5-7	6											
LAK-I-2437	968+56 Rt.	48"	28°	12-2	8	10-9	8	4-1	9	3-7	30	15-9	4	5-8	2	11-4	6	5-7	6											
LAK-I-2486	994+00 Lt.	48"	19°	9-11	8	10-1	8	4-1	8	3-6	26	13-3	4	5-5	2	9-1	6	4-11	8											
LAK-I-2486	994+00 Rt.	48"	19°	9-8	8	10-3	8	4-1	8	3-6	26	13-1	4	5-6	2	8-10	6	3-5	8											
LAK-I-2542	1024+00 Lt.	42"	38°	12-2	8	9-0	8	4-1	8	3-5	30	15-3	4	4-5	2	11-4	6	4-2	6											
LAK-I-2542	1024+00 Rt.	42"	38°	11-9	8	10-4	8	4-1	8	3-2	30	14-9	2	5-10	2	10-11	6	5-8	6											
LAK-I-2624	8+51 Lt. & Rt.	42"	7°30'	7-4	8	9-10	8	4-2	6	3-6	24	11-2	4	6-0	2	7-2	6	5-7	6											
LAK-I-2637	15+28 Lt.(S.R.I)	42"	5°10'	7-11	8	10-7	8	4-1	7	3-3	26	10-11	4	6-1	2	7-1	6	5-11	8											
LAK-I-2637	15+28 Rt.(S.R.I)	42"	5°10'	7-4	8	9-10	8	4-2	6	3-6	24	11-2	4	6-0	2	7-2	6	5-7	6											
	Lt. Ramp J	42"	21°15'	9-0	8	10-8	8	4-1	7	3-3	26	12-1	4	6-3	2	8-2	6	5-8	8											
	Rt. Ramp I	42"	11°30'	8-2	8	11-5	8	4-1	7	3-2	26	11-4	4	6-11	2	7-4	6	6-7	8											
	843+50 Rt.	24"	31°																											
	108+91 Rt. 307	48"	9°	10-10	8	11-9	8	4-1	8	3-7	32	14-5	4	6-8	2	10-0	6	6-7	8											
	108+91 Lt. 307	48"	9°	9-4	8	12-9	8	4-1	8	3-5	30	12-11	4	7-8	2	8-6	6	7-7	8											
	Dayton Road 13+83 Lt. & Rt.	48"	50°	17-9	8	9-7	8	4-1	10	3-11	38	21-5	4	4-5	2	16-11	6	4-9	6											
	870+65 R.&L																													
	Rt. Ramp I																													
	108+91 Rt. 307																													
	108+91 Lt. 307																													
	872+00 Rt.	21"	30°																											
	8+41 Lt.	42"		9-9	8	10-11	8	4-1	8	3-2	28	12-11	4	6-5	2	8-11	6	6-3	8											
	988+00 Rt.	24"	26°																											



NOTE:
For additional information see Std. Constr. Dwgs. Hdwl. A, B & C.
Mark l and l4 bars to be bent in field.

* NOTE:
Quantities shown are for one Hdwl.
Vertical Bars spaced @ 2'-0" c-c.
Horizontal Bars spaced @ 1'-6" c-c Max.