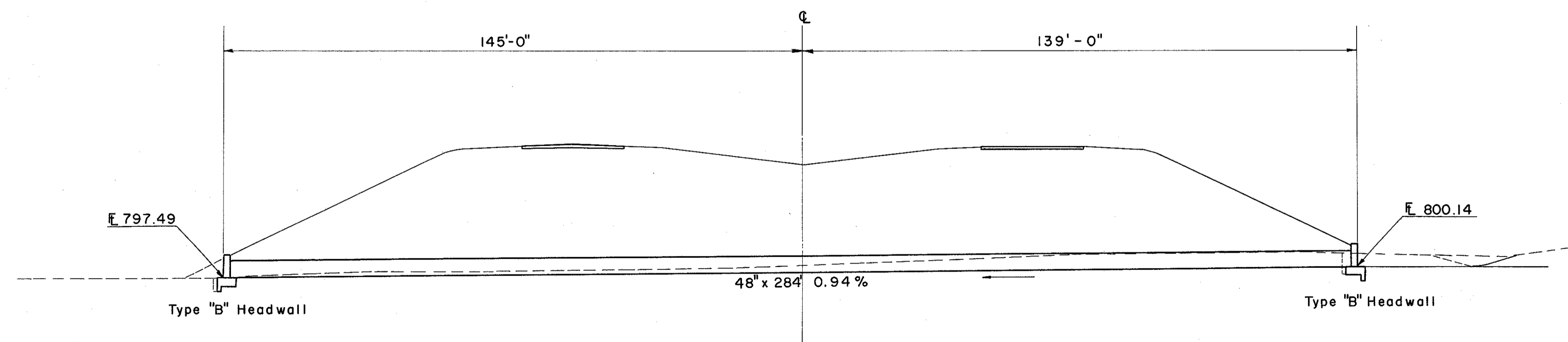
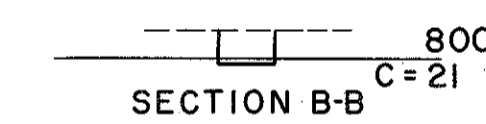
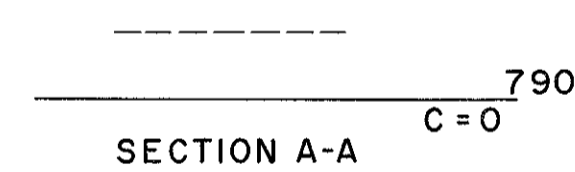


AREA = 75 ACRES
Q₅₀ = 67.5 C.F.S.

HEADWATER 4.97 FT.
OUTLET VELOCITY 8.1 F.P.S.

SCALE 1" = 20'



ESTIMATED QUANTITIES

* E-2	Excavation for Structures	51.0 C.Y.
E-3	Channel Excavation	19.0 C.Y.
L-10	Sodding	30.1 S.Y.
S-1	Concrete for Structures Class "C"	27.1 C.Y.
S-27	48" Pipe for Roadway Culverts	284 L.F.
S-4	Reinforcing Steel	1170 Lbs.

* Includes E-2 for Headwalls.

CULVERT DATA

TYPE: S-27 M 6.4 (d) 8 Ga. or M106.6 (d)
 SIZE: 48" x 284"
 WORK REQ'D: Build a Pipe Culvert
 with Type B Headwalls, Sodding 18"
 to Back & Ends of Headwalls

STRUCTURE NO. LAK - I - 2486

PIPE CULVERT STA. 994 + 00