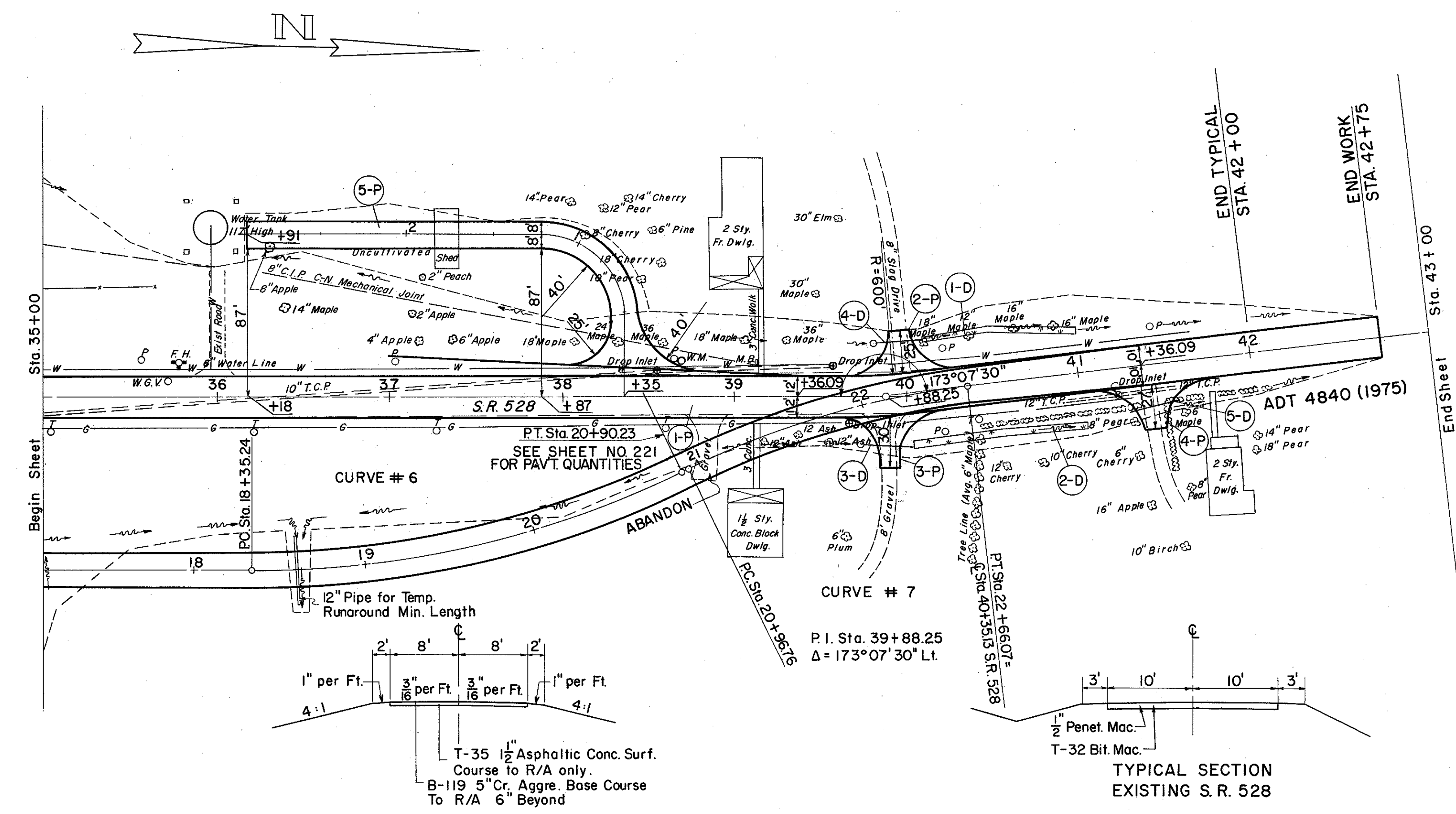
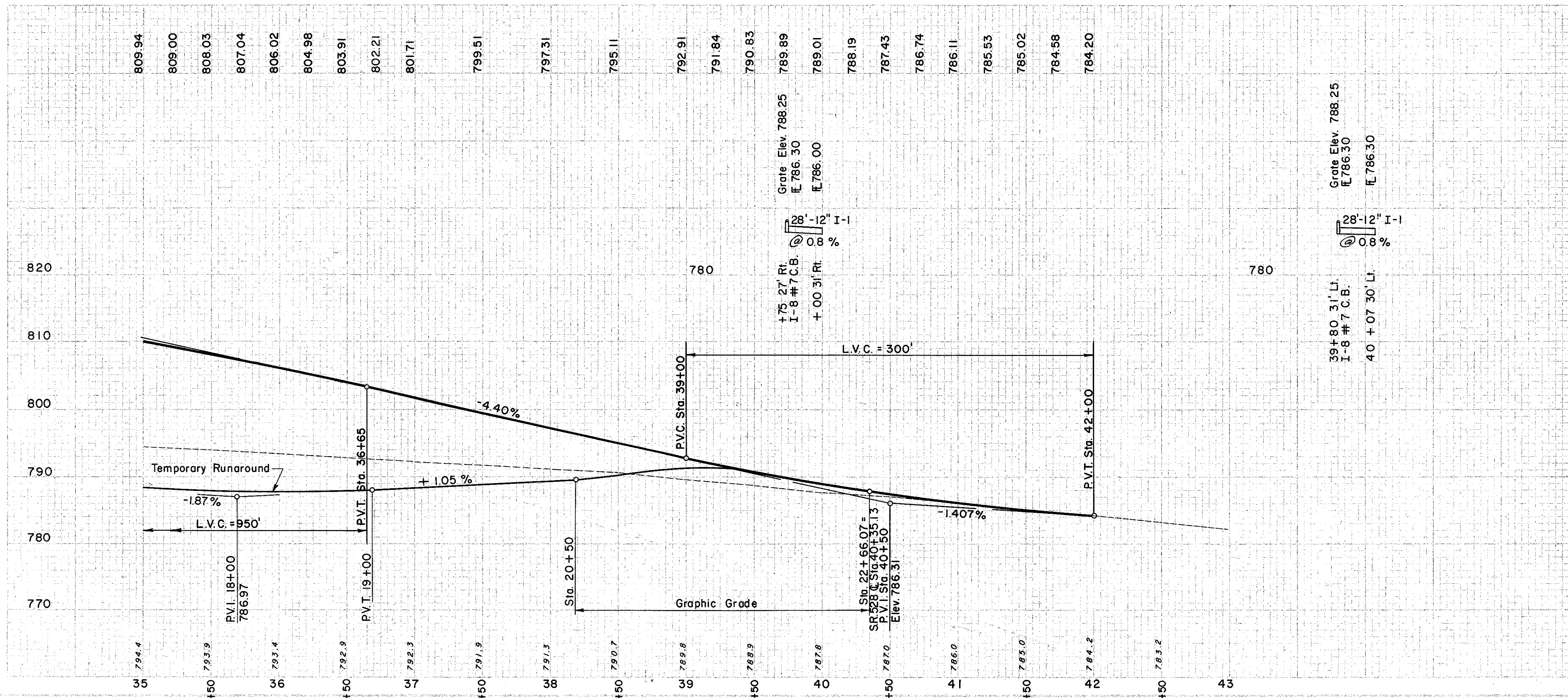
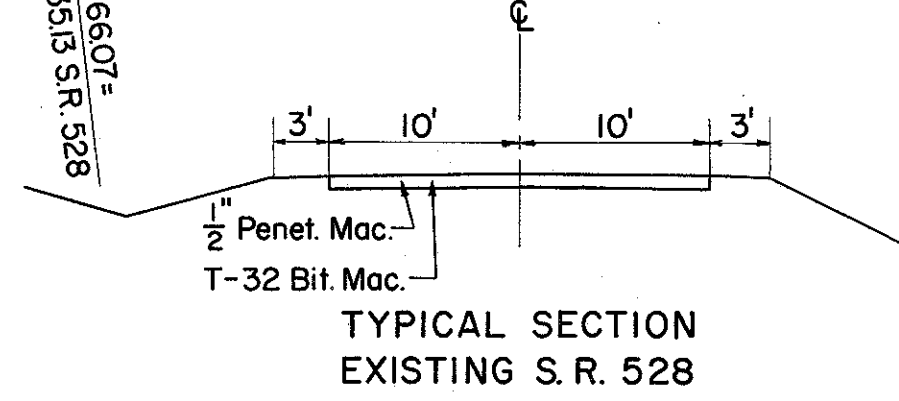
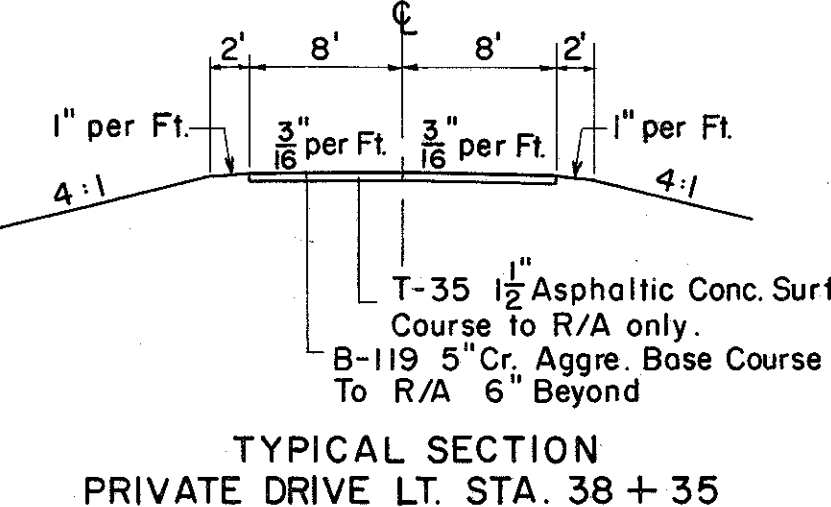


LAKE COUNTY
LAK-1-22.60



TEMPORARY RUNAROUND
CURVE DATA

CURVE # 6	CURVE # 7
P.I. Sta. 19 + 64.88	P.I. Sta. 21 + 82.17
$\Delta = 25^\circ 29' 56''$	$\Delta = 18^\circ 37' 26''$
$D = 10^\circ 00' 00''$	$D = 11^\circ 00' 00''$
$R = 572.96'$	$R = 520.87'$
$L = 254.99'$	$L = 169.31'$
$T = 129.64'$	$T = 85.41'$



(P) PAVEMENT

REF. NO.	SIDE	STATION	T-35	B-119	T-30	E-101
			ASPHALTIC CONCRETE SURFACE COURSE	CRUSHED AGGR. BASE COURSE	BIT. PRIME COAT	COMPACT. SUBGR.
			C.Y.	C.Y.	GAL.	S.Y.
2-P	LT.	39+95	2.6	8.8	22.1	63
3-P	RT.	39+88	2.9	9.7	24.4	70
4-P	RT.	41+40	2.7	9.2	22.4	64
5-P	LT.	36+18	4.1	85.8	36	53.1
TOTAL			12	114	105	728

(D) DRAINAGE

REF. NO.	SIDE	STATION	SODDING	
			FROM	TO
I-8	RT.	39+50	41+00	58
I-10	RT.	40+00	41+00	41
I-8	LT.	39+75	40+00	28
I-8	LT.	39+80	40+07	28
I-8	RT.	41+28	41+52	28
SUBTOTAL			41	41

SODDING RIGHT DITCH					
STATION	WIDTH	SLOPE	LENGTH		
FT.	FT.	F. B.	S.Y.		
40+00	3.7	24	4:1	100	41
41+00	3.7	24	4:1	100	41
SUBTOTAL			41		

SODDING LEFT DITCH					
STATION	WIDTH	SLOPE	LENGTH		
FT.	FT.	F. B.	S.Y.		
39+50	3.4	22	4:1	50	19
40+00	3.5	23	4:1	100	39
41+00	3.5	23	4:1	100	39
SUBTOTAL			58		

