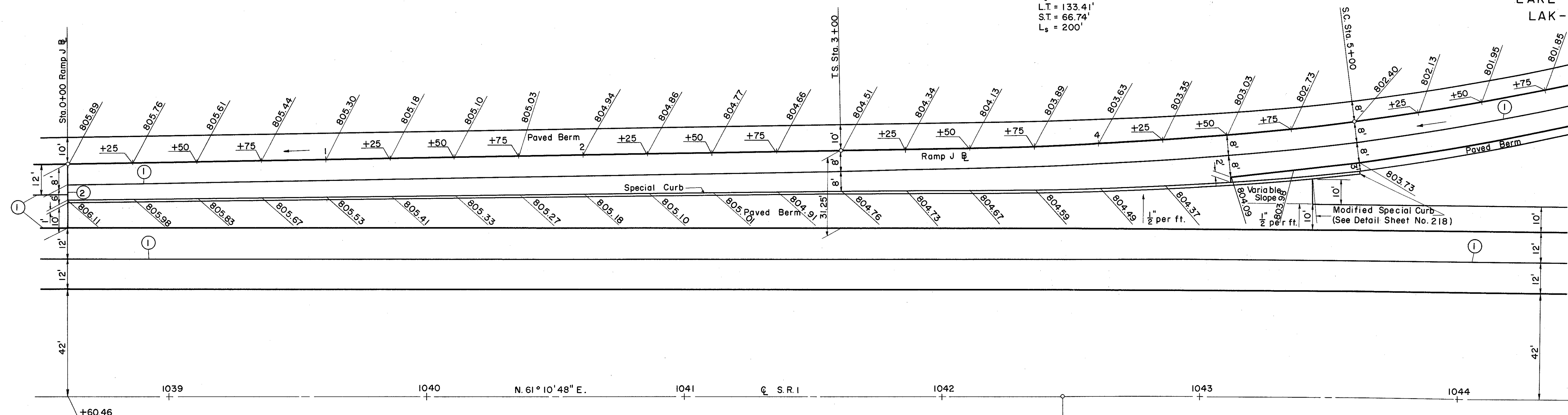


RAMP J  
SPIRAL DATA  
P.I. Sta. 4+33.41  
 $\theta_s = 6^\circ 00' 00''$  Lt.  
L.T. = 133.41'  
S.T. = 66.74'  
L\_s = 200'



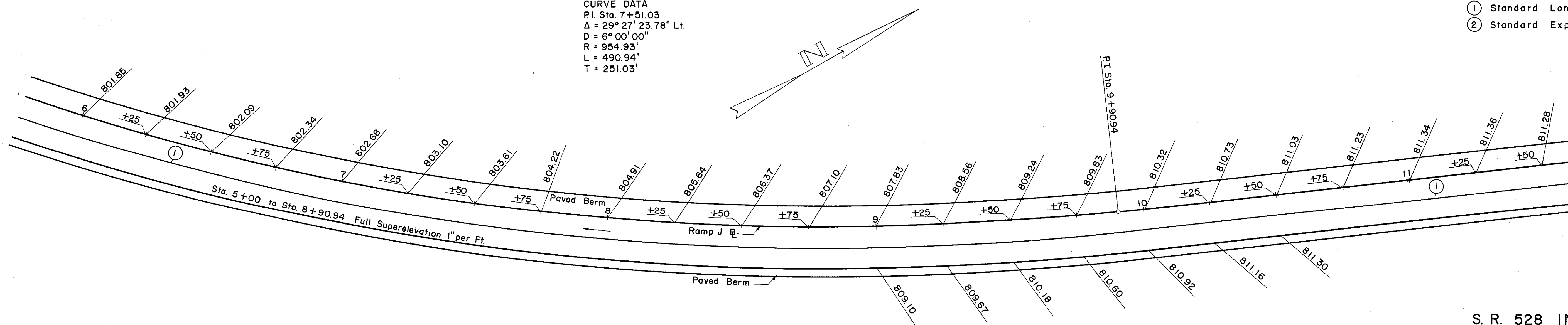
# RAMP J ENTRANCE TERMINAL

CURVE DATA  
P.I. Sta. 16+20.16  
 $\Delta = 24^\circ 21' 30''$  Rt.  
D = 0° 00' 00"  
R = 12277.67'  
L = 5219.64'  
T = 2649.85'  
E = 282.70'

### CONSTRUCTION JOINT LEGEND

- ① Standard Longitudinal Joint
- ② Standard Expansion Joint

RAMP J  
CURVE DATA  
P.I. Sta. 7+51.03  
 $\Delta = 29^\circ 27' 23.78''$  Lt.  
D = 6° 00' 00"  
R = 954.93'  
L = 490.94'  
T = 251.03'



# RAMP J ENTRANCE TERMINAL

S. R. 528 INTERCHANGE  
RAMP J

Scale 1" = 20'-0"