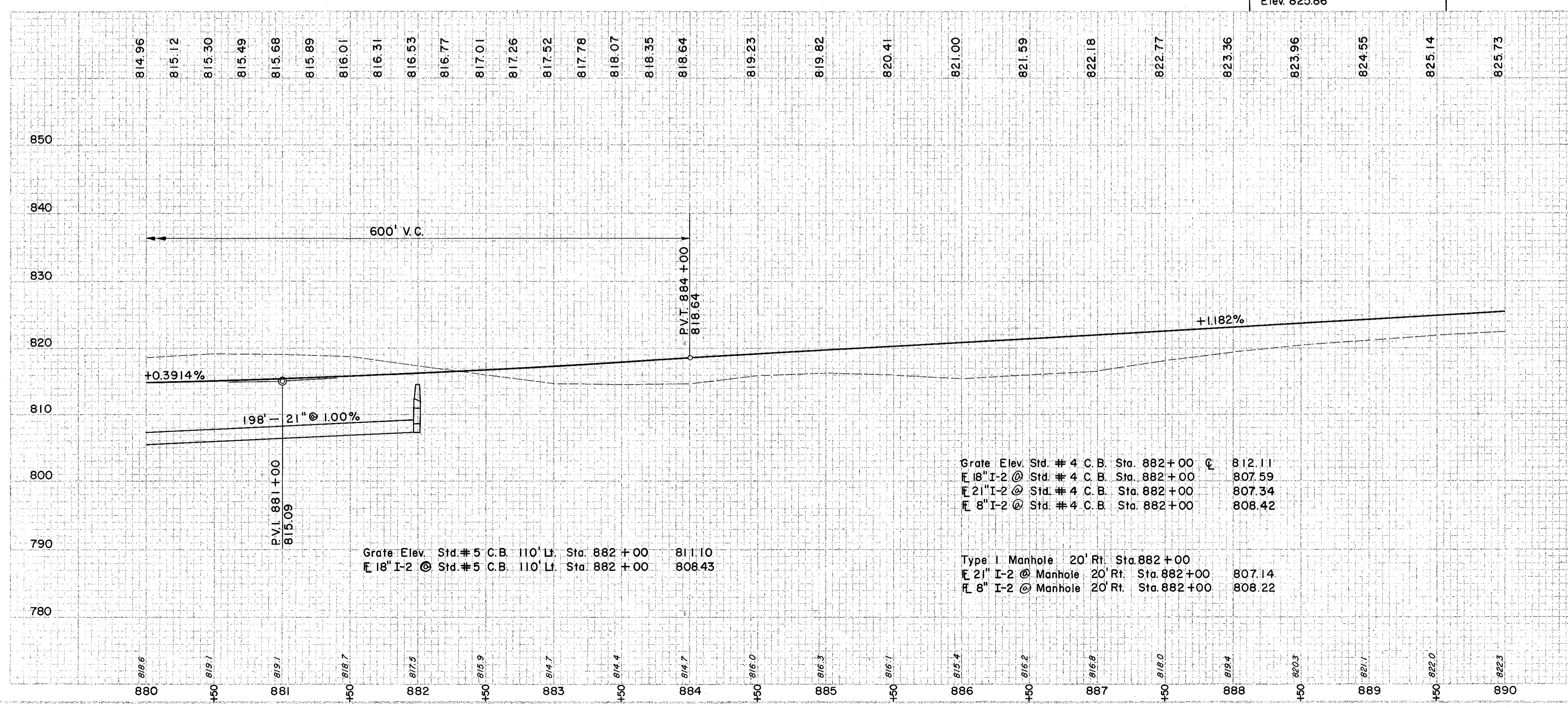
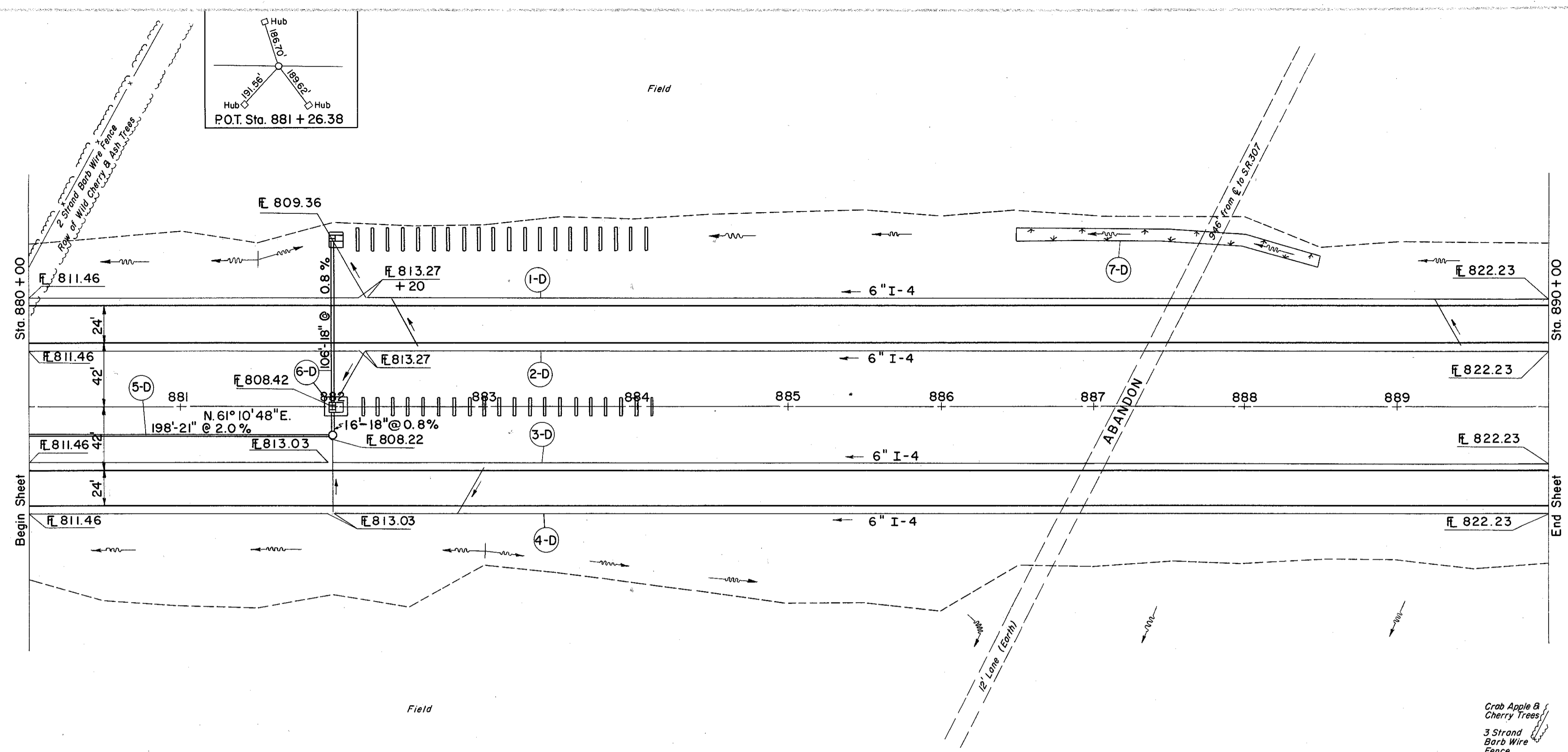


LAKE COUNTY
LAK-1-22.60



Grate Elev.	Std. # 4 C.B.	Sta. 882+00	812.11
18" I-2	Std. # 4 C.B.	Sta. 882+00	807.59
21" I-2	Std. # 4 C.B.	Sta. 882+00	807.34
8" I-2	Std. # 4 C.B.	Sta. 882+00	808.42
Type 1 Manhole	20' Rt.	Sta. 882+00	807.14
21" I-2 @ Manhole	20' Rt.	Sta. 882+00	807.14
8" I-2 @ Manhole	20' Rt.	Sta. 882+00	808.22

Grate Elev.	Std. # 5 C.B.	110' Lt.	Sta. 882+00	811.10
18" I-2	Std. # 5 C.B.	110' Lt.	Sta. 882+00	808.43

REF. NO.	STATION	CLASS. STORM SEWER UNDER OR M-65(b) OR M-68(b)	I-2	I-4		I-5	I-8	I-10
				8" OUT-LET PIPE	6" PIPE UNDER DRAIN			
FROM	TO	SEC.	SEC.	SEC.	SEC.	SEC.	SEC.	SEC.
1-D	880+00	18"	10	10	6"	6"	6"	6"
2-D	880+00	18"	10	10	6"	6"	6"	6"
3-D	880+00	18"	10	10	6"	6"	6"	6"
4-D	880+00	18"	16	16	6"	6"	6"	6"
5-D	880+00	18"	106	106	6"	6"	6"	6"
6-D	882+00	18"			6"	6"	6"	6"
7-D	886+50	18"			6"	6"	6"	6"
SUB-TOTAL			1100	1028				
S.Y.			46	85				179

STATION	SODDING LEFT DITCH		S.Y.
	DEPTH OF SODDING FT.	WIDTH OF SODDING FT.	
886+50	.40	6.1	46
887+00	.30	6.1	85
888+00	.40	8.1	48
888+50	.40	8.1	48
SUB-TOTAL			179

EXCAVATION	= 9,375 C.Y.
EMBANKMENT	= 12,921 C.Y.
ENHANCEMENT @ 22%	= 15,764 C.Y.