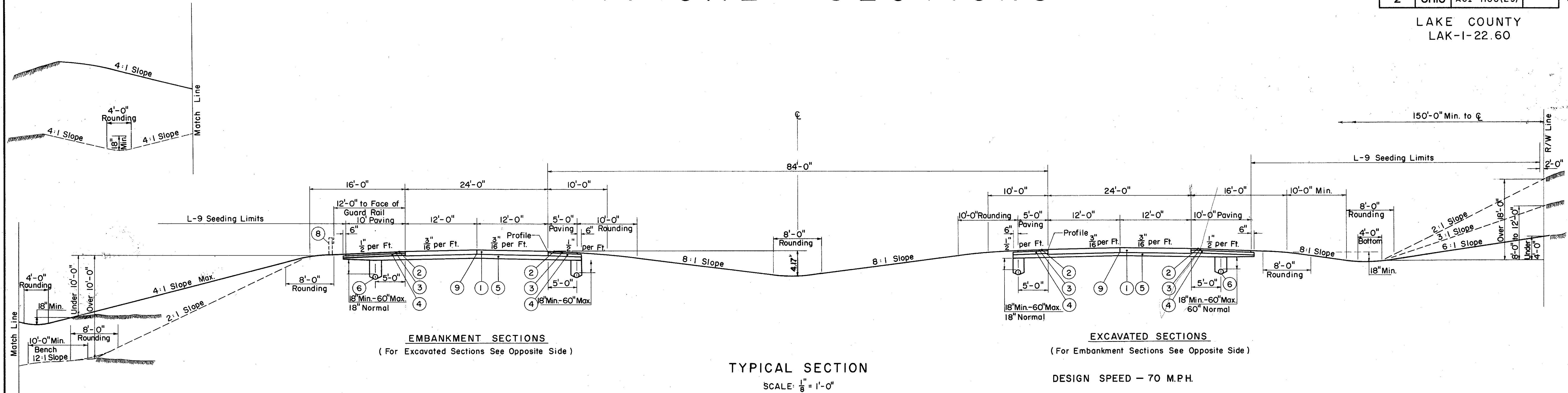


TYPICAL SECTIONS

FED. RD. DIVISION	STATE	PROJECT	2 280
2	OHIO	ACI-1103(29)	

LAKE COUNTY
LAK-1-22.60



EMBANKMENT SECTIONS
(For Excavated Sections See Opposite Side)

EXCAVATED SECTIONS
(For Embankment Sections See Opposite Side)

TYPICAL SECTION

SCALE: 1/8" = 1'-0"

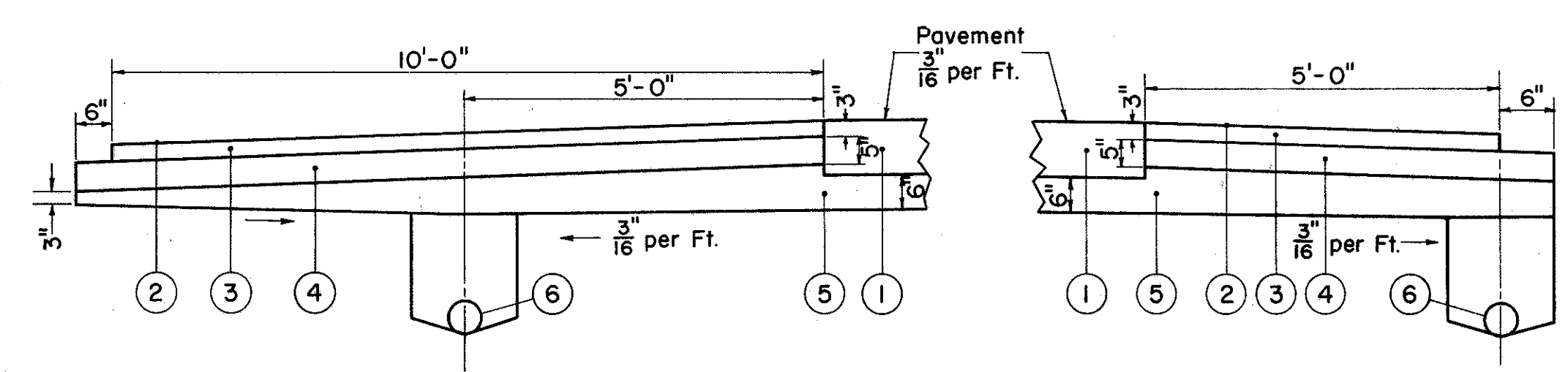
DESIGN SPEED - 70 M.P.H.

LIMITING STATIONS

- STA. 838 + 93.50 TO STA. 891 + 50.47
- STA. 927 + 50.00 TO STA. 1052 + 76.43
- STA. 0 + 00.00 TO STA. 19 + 00.00

LEGEND

- ① T-71 10" Reinforced Portland Cement Pavement.
- ② T-31 Bituminous Surface Treatment.
- ③ B-33 3" Bituminous Macadam Base Course.
- ④ I-18 5" Stabilized Crushed Aggregate Shoulders & Approaches.
- ⑤ I-22 Variable Depth Subbase.
- ⑥ I-4 6" Pipe Underdrain. *Sec. M 6.4 (h) thru Rock Cut.
- ⑦ L-9 Seeding & Protecting Roadway Areas.
- ⑧ I-15 Guard Rail
- ⑨ Standard Longitudinal Joint.



OUTSIDE EDGE

MEDIAN EDGE

PAVED SHOULDER DETAIL

SCALE: 1/2" = 1'-0"