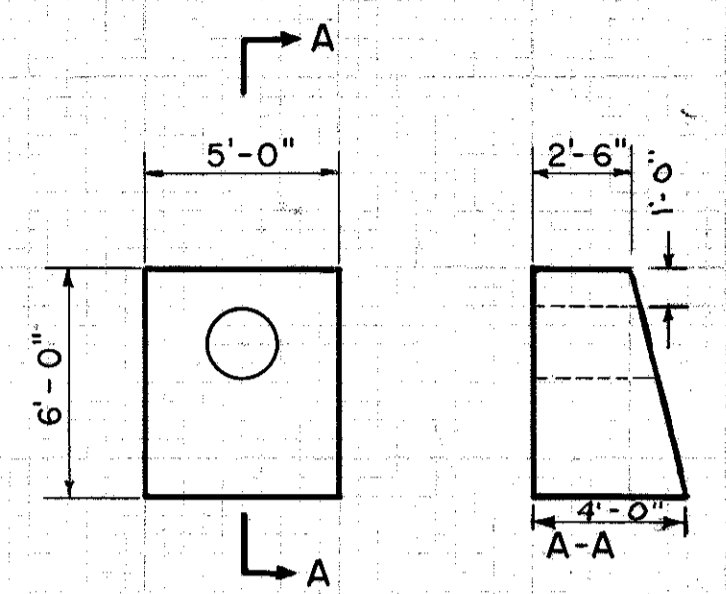
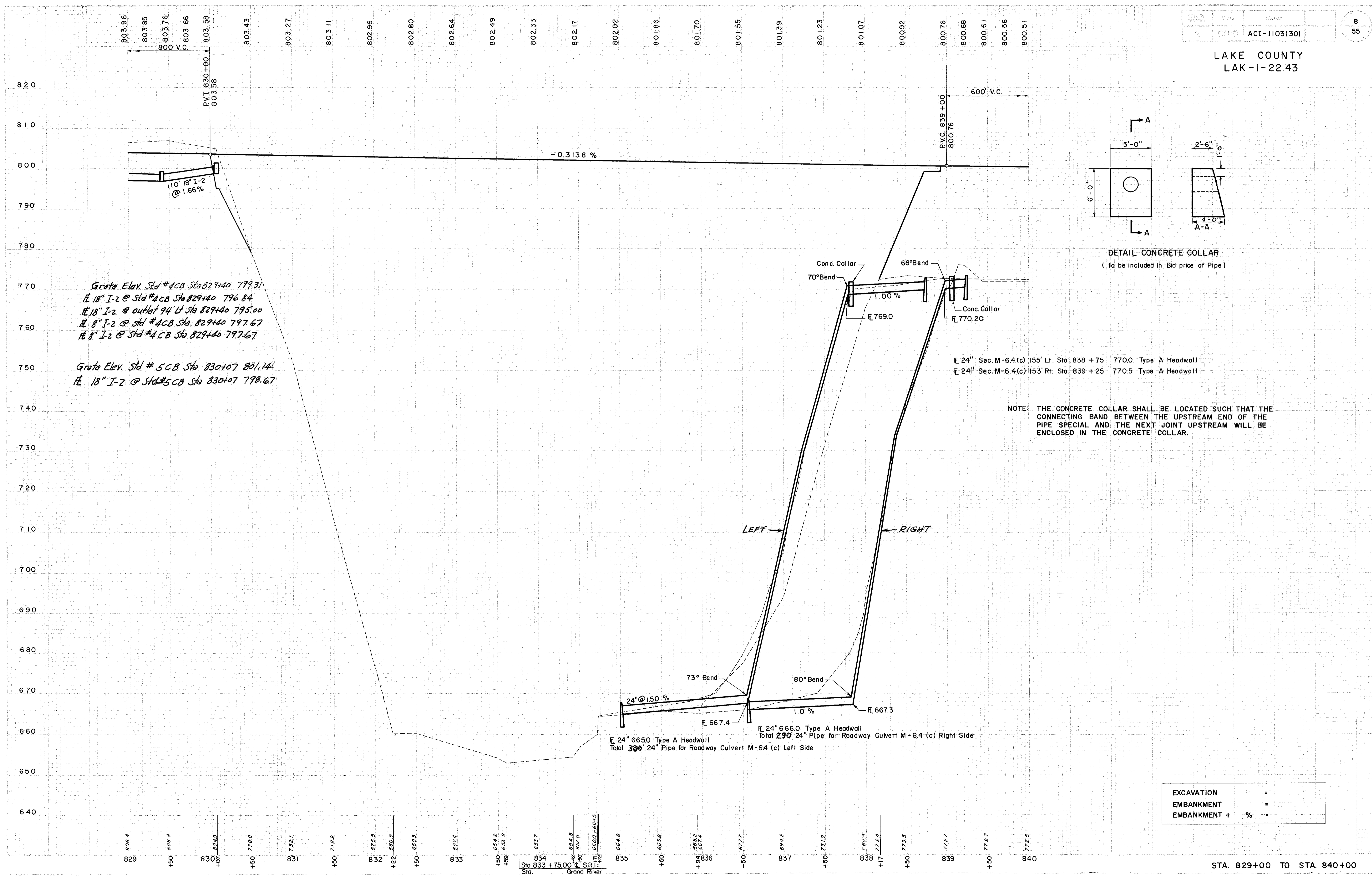


LAKE COUNTY
LAK-1-22.43



DETAIL CONCRETE COLLAR
(to be included in Bid price of Pipe)

Grate Elev. Std #4CB Sta 829+40 799.31
 Fl 18" I-2 @ Std #4CB Sta 829+40 796.84
 Fl 18" I-2 @ outlet 94' Lt Sta 829+40 795.00
 Fl 8" I-2 @ Std #4CB Sta 829+40 797.67
 Fl 8" I-2 @ Std #4CB Sta 829+40 797.67

Grate Elev. Std #5CB Sta 830+07 801.14
 Fl 18" I-2 @ Std #5CB Sta 830+07 798.67

Fl 24" Sec. M-6.4(c) 155' Lt. Sta. 838 + 75 770.0 Type A Headwall
 Fl 24" Sec. M-6.4(c) 153' Rt. Sta. 839 + 25 770.5 Type A Headwall

NOTE: THE CONCRETE COLLAR SHALL BE LOCATED SUCH THAT THE CONNECTING BAND BETWEEN THE UPSTREAM END OF THE PIPE SPECIAL AND THE NEXT JOINT UPSTREAM WILL BE ENCLOSED IN THE CONCRETE COLLAR.

Fl 24" 665.0 Type A Headwall
 Total 300' 24" Pipe for Roadway Culvert M-6.4 (c) Left Side

Fl 24" 666.0 Type A Headwall
 Total 290' 24" Pipe for Roadway Culvert M-6.4 (c) Right Side

EXCAVATION	=
EMBANKMENT	=
EMBANKMENT + %	=