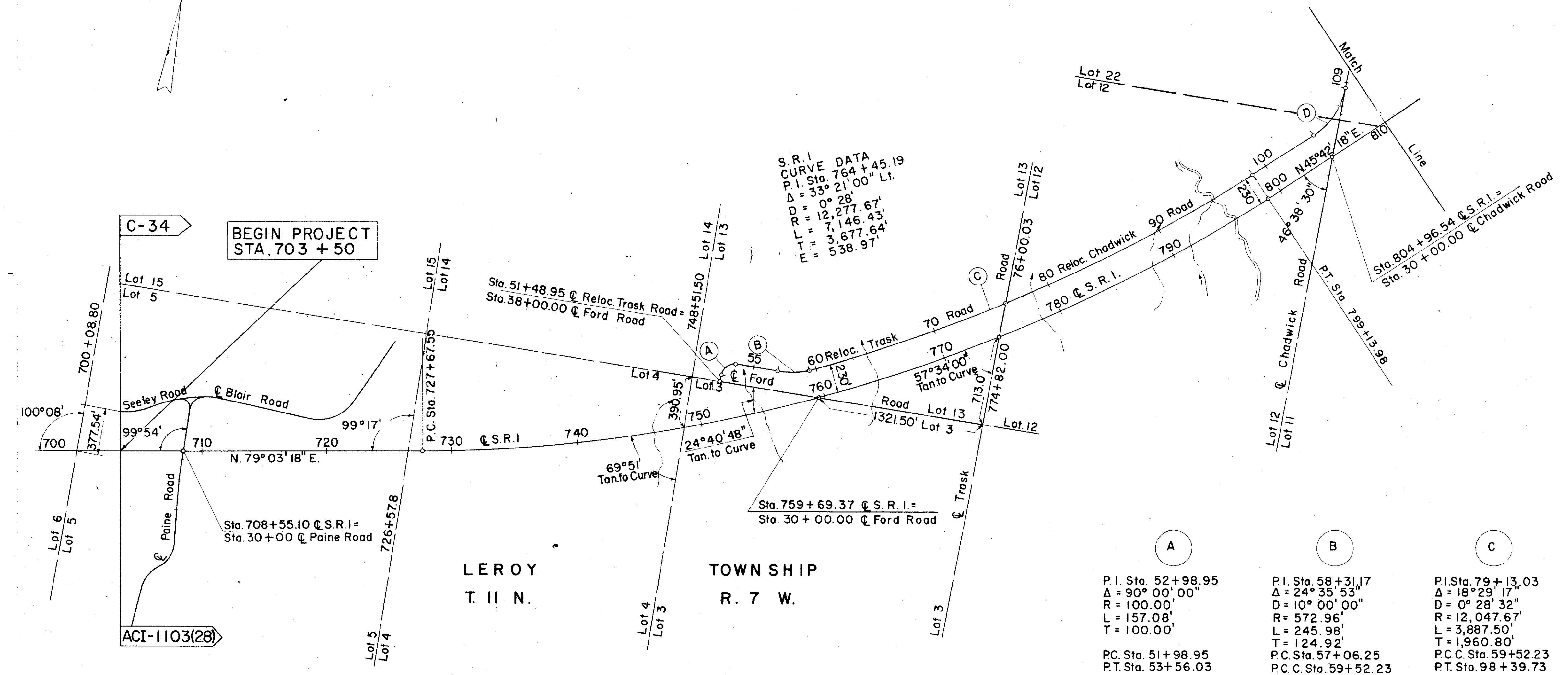
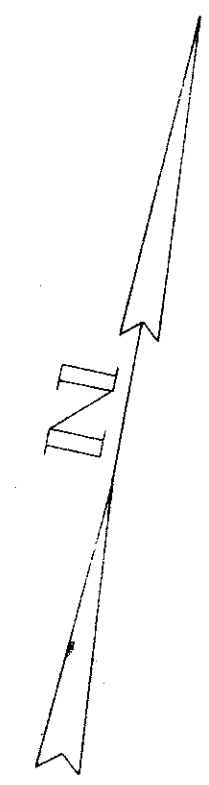
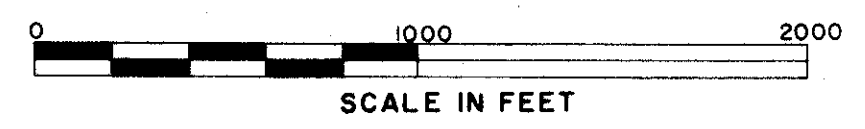


LOCATION PLAN

LAK-1-20.03 & LAK-1-22.43

LEROY, PERRY & MADISON TOWNSHIPS

LAKE COUNTY



S.R. I.
CURVE DATA
P.I. Sta. 764+45.19
Δ = 33° 21' 00" Lt.
D = 0° 28'
R = 12,277.67'
L = 7,146.43'
T = 3,677.64'
E = 538.97'

A	B	C	D
P.I. Sta. 52+98.95	P.I. Sta. 58+31.17	P.I. Sta. 79+13.03	P.I. Sta. 106+39.47
Δ = 90° 00' 00"	Δ = 24° 35' 53"	Δ = 18° 29' 17"	Δ = 46° 38' 30"
D = 100.00'	D = 10° 00' 00"	D = 0° 28' 32"	D = 10° 00' 00"
L = 157.08'	R = 572.96'	R = 12,047.67'	R = 572.96'
T = 100.00'	L = 245.98'	L = 3,887.50'	L = 466.42'
	T = 124.92'	T = 1,960.80'	T = 247.00'
P.C. Sta. 51+98.95	P.C. Sta. 57+06.25	P.C. Sta. 59+52.23	P.C. Sta. 103+92.47
P.T. Sta. 53+56.03	P.C. Sta. 59+52.23	P.T. Sta. 98+39.73	P.T. Sta. 108+58.89

Received 6/19/58 Time 09:03 AM 201
211

Recorded 6/19/58

Plat Book M Page 42

Signed D.G. Jenkins Recorder, Lake County, Ohio

Fee 10.00 Paid

Signed John Russell
Right of Way Engineer, Interstate Projects

Date _____

Signed Robert E. Smith
Partner - Capitol Engineering Associates

Date _____

Location and Limited Access approved and Journalized by the
Director of Highways.
Date September 10, 1957 Volume 402 Page 805
in the Director of Highways Journal.

