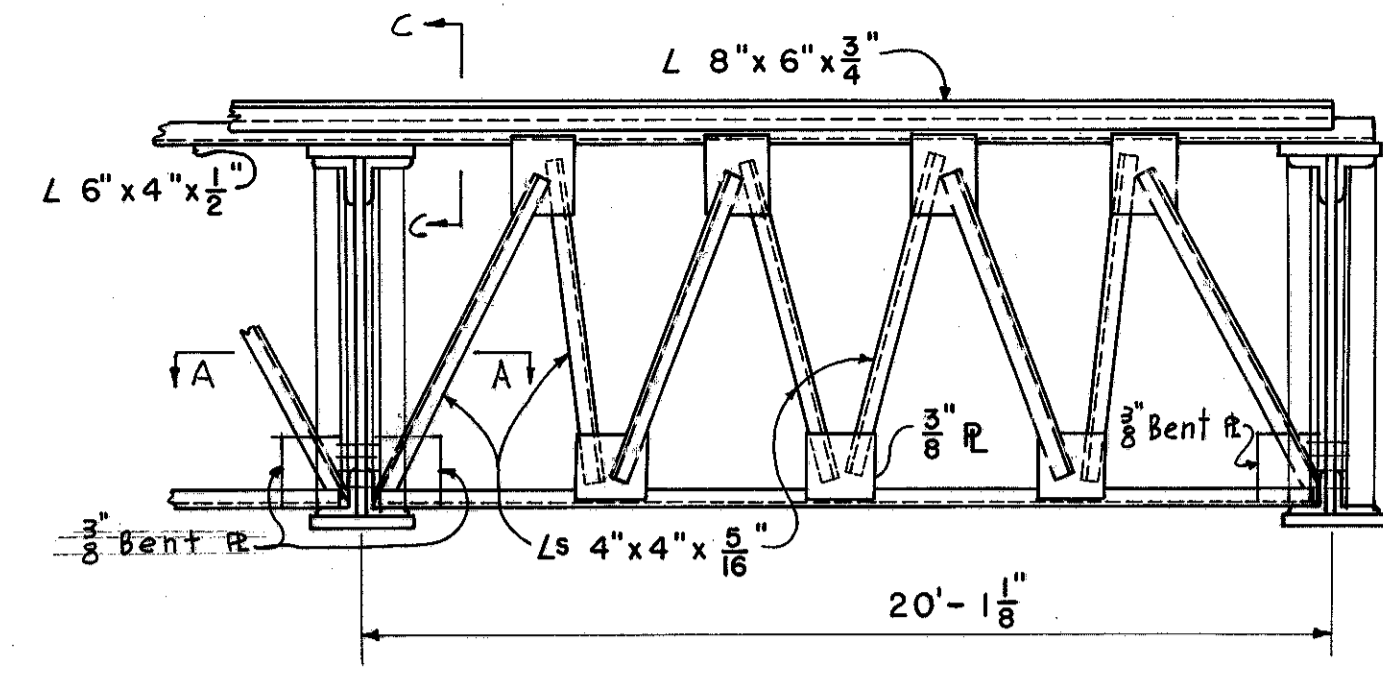
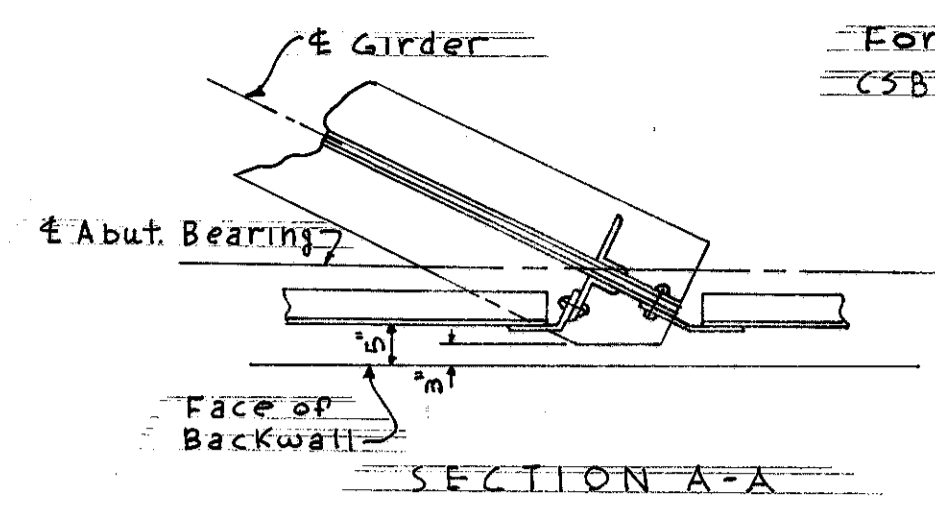


LAKE COUNTY
SEC. LAK-1-2003

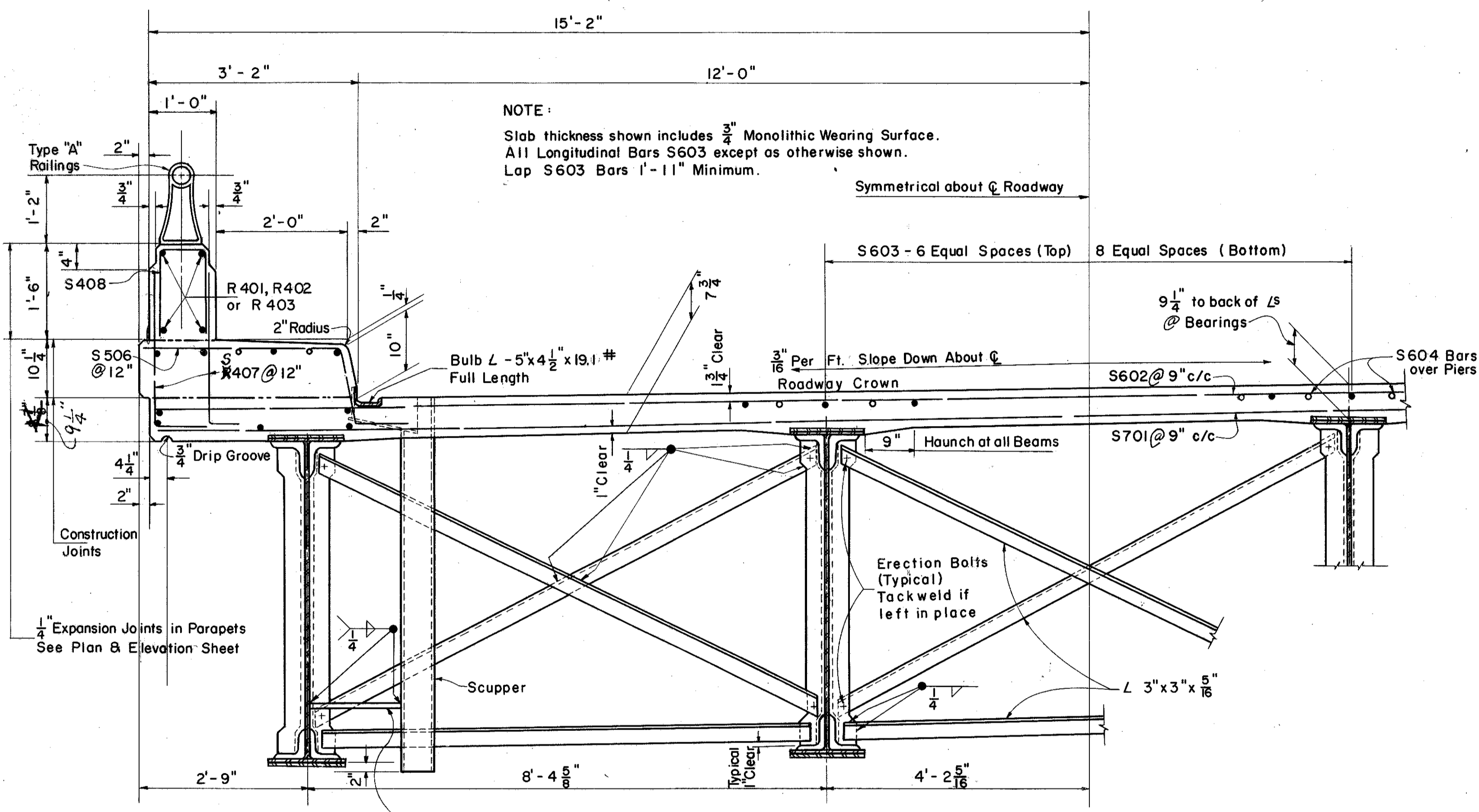
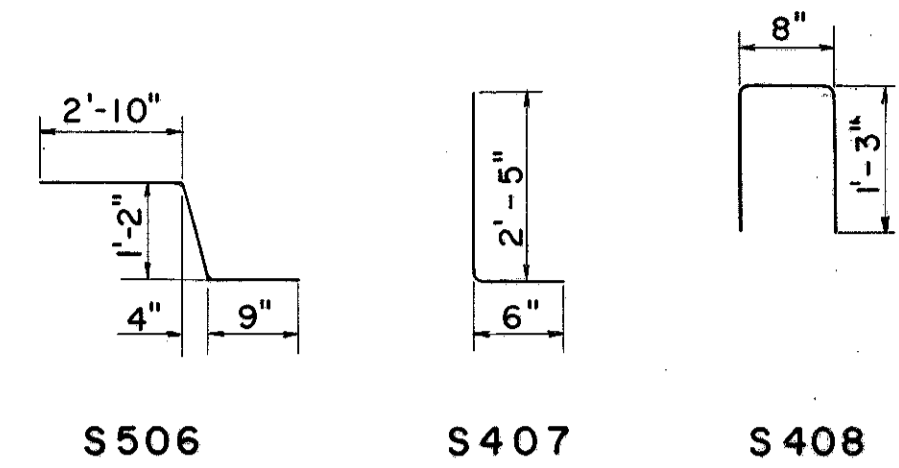
SUPERSTRUCTURE BAR LIST						
MARK	NO.	SIZE	LENGTH	TYPE	REMARKS	WEIGHT
(156)	S701	912	7	30'-0"	Str.	55924
(156)	S701a	912	6	29'-8 ³ / ₁₆ "	Str.	Vary by 4# 5207
(156)	S602	912	7	30'-0"	Str.	41009
(156)	S602a	912	6	29'-8 ³ / ₁₆ "	Str.	Vary by 4# 3826
	S603	960	6	42'-0"	Str.	60560
	S604	180	6	42'-0"	Str.	11350
(1264)	S705	8	7	38'-0"	Str.	620
(2528)	S506	633	5	4'-9"	Bent	6262
(1264)	S407	633	4	2'-10"	Bent	4784
	S408	633	4	3'-0"	Bent	2533
	S706	20	7	7'-0"	STR.	307
	S706	20	7	7'-0"	STR.	225
	R401	80	4	17'-6"	Str.	Include
	R402	8	4	14'-0"	Str.	With Rail for Payment
	R403	8	4	14'-0"	Str.	With Rail for Payment
Total						192,607



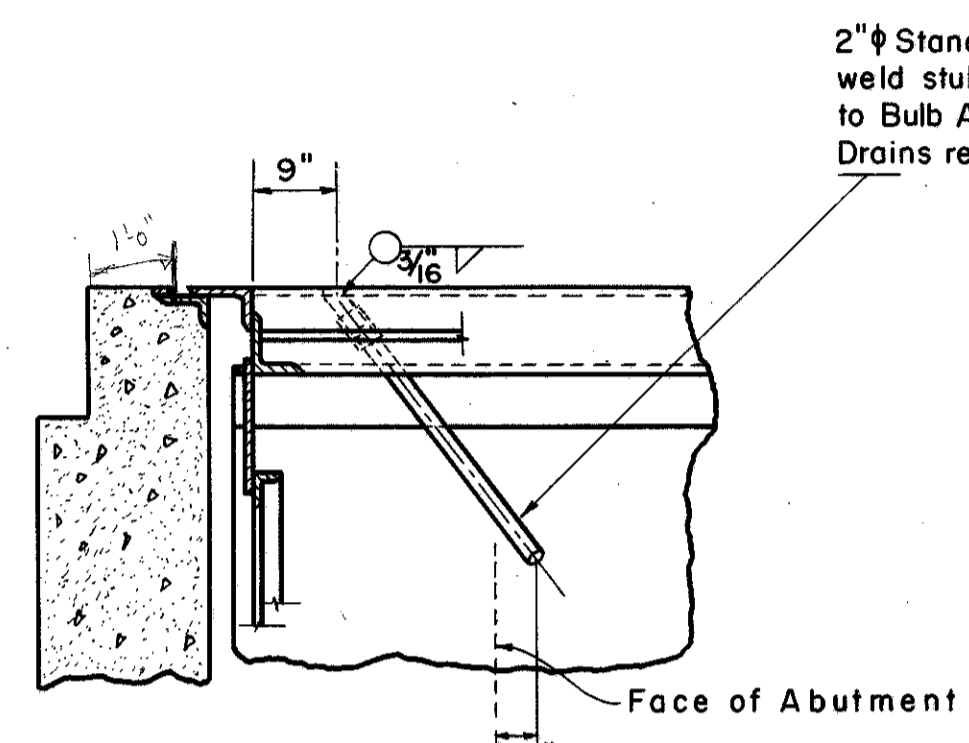
TYPICAL END CROSS FRAME



For Sec C-C see Std Drawing
CSB-2-56 Sheet 2 of 6 Revised 3-1-58



TYPICAL HALF SECTION



SCUPPER DETAIL AT END DAM

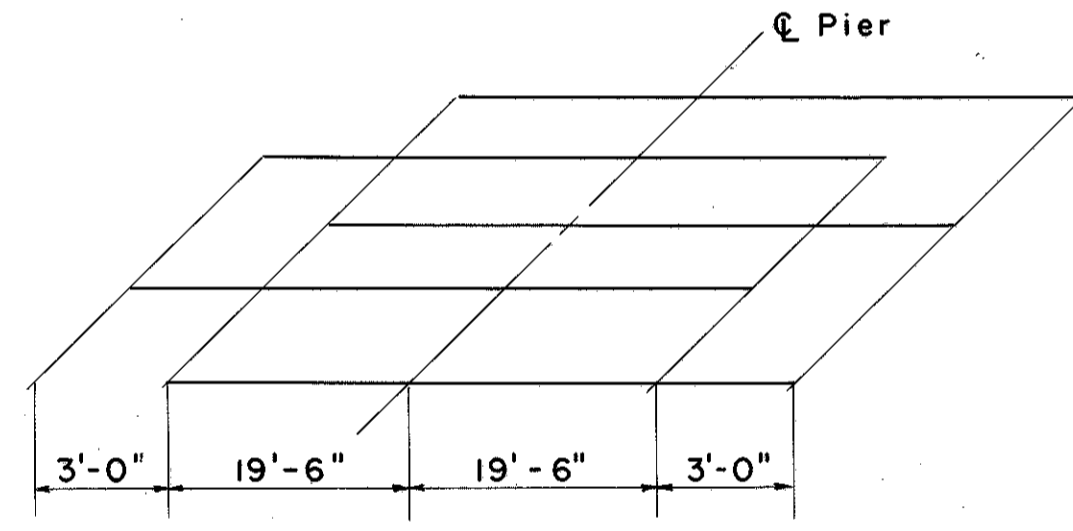
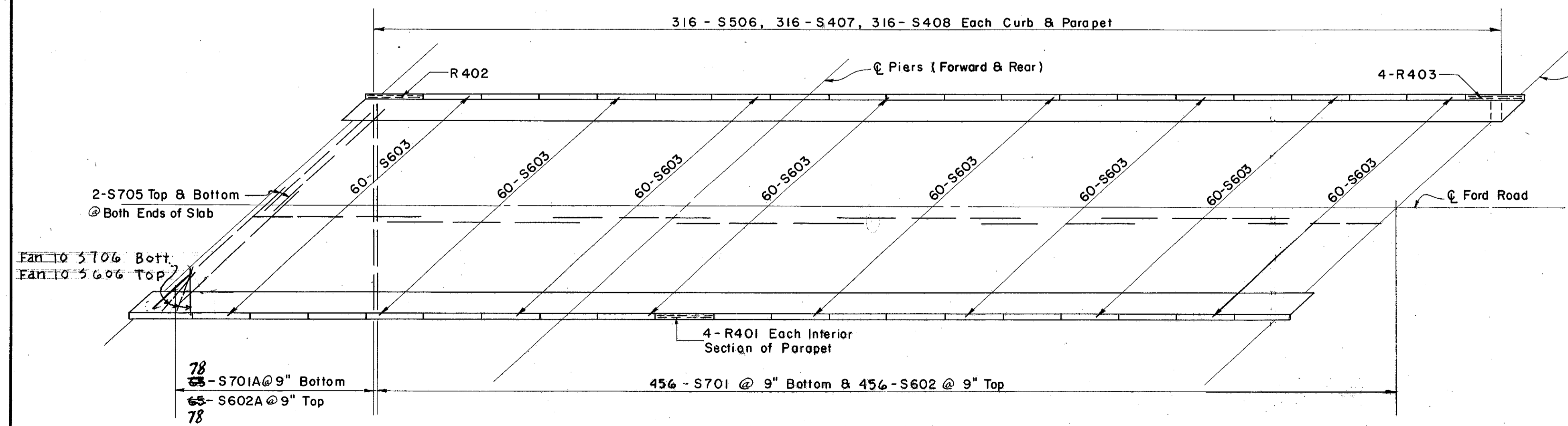


DIAGRAM SHOWING STAGGER OF S604 BARS OVER PIERS

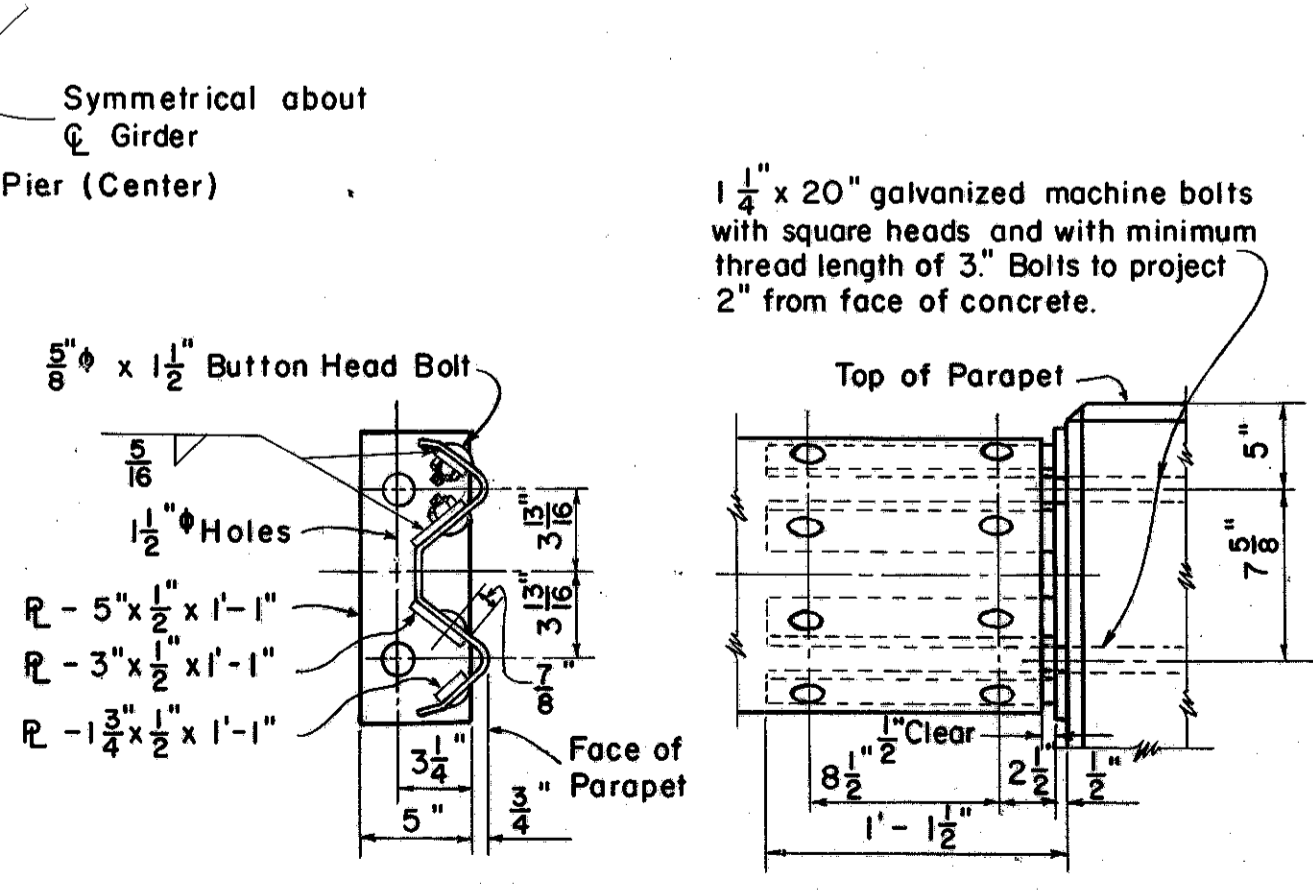
28 - S604 OVER EACH PIER

NOTES

Reference shall be made to Standard Drawing AR-1-57, revised 3-1-58 for aluminum railing type "A" and concrete parapet details.
Concrete and reinforcing steel above parapet construction joint included with railing for payment.
All concrete shall be class "C".
Deck Placing Procedure: In placing the deck concrete, construction joints will be permitted, parallel to the transverse reinforcing steel and near the middle of any span. Because of the flow of curing water from the surface of previously-placed deck concrete, the sequence of pours shall be upgrade, starting at the lowest end (or ends) on an inclined grade or vertical curve (or at an intermediate low point for a sagged vertical curve).
Reference shall be made to Standard Drawing CSB-2-56, sheets 2 & 3 of 6, dated 12-3-56, for details of end dams, gutters, scuppers, pipe drains and curb plates.



HALF DECK REINFORCEMENT PLAN



NOTE: Guard Rail End Connection Assembly shall be galvanized after welding.

GUARD RAIL DETAIL

SEC. C-34 FED. AID PROJ. NO. ACI-1103 (28)

PREPARED BY
CAPITOL ENGINEERING ASSOCIATES, DILLSBURG, PA.
FOR

STATE OF OHIO
DEPARTMENT OF HIGHWAYS

MISCELLANEOUS DETAILS
BRIDGE NO. LAK-1-2111
S.R. 1 UNDER FORD ROAD
LAKE COUNTY

STA. 759+69.37

DESIGNED	DRAWN	TRACED	CHECKED	REVISED DATE	REVISED
J.V.	J.V.			11-14-58	3-19-59