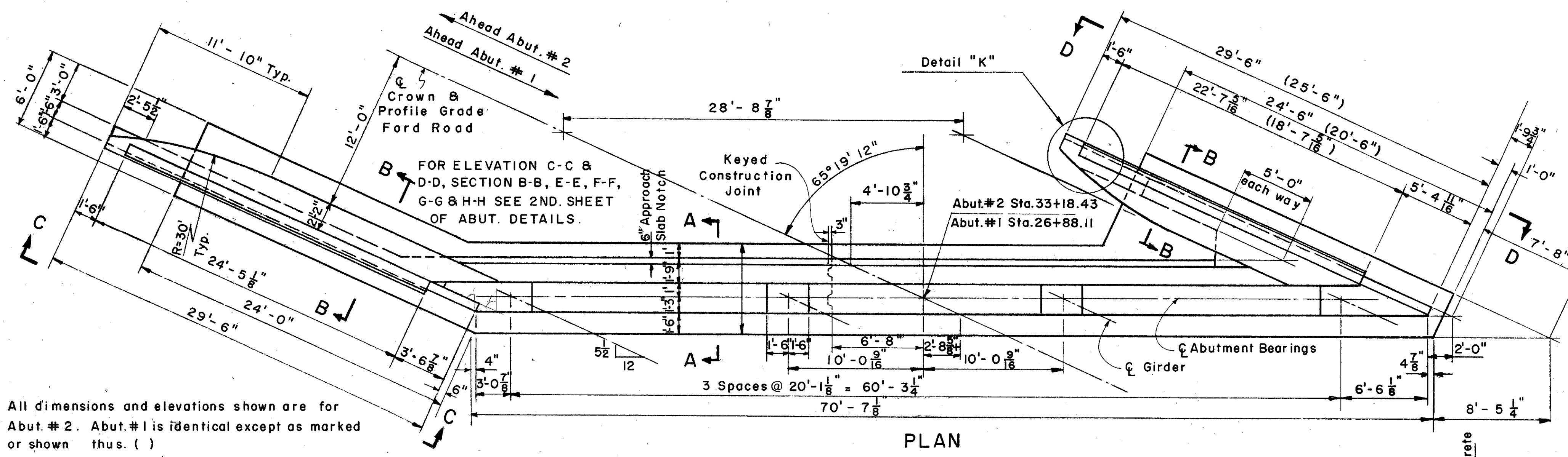
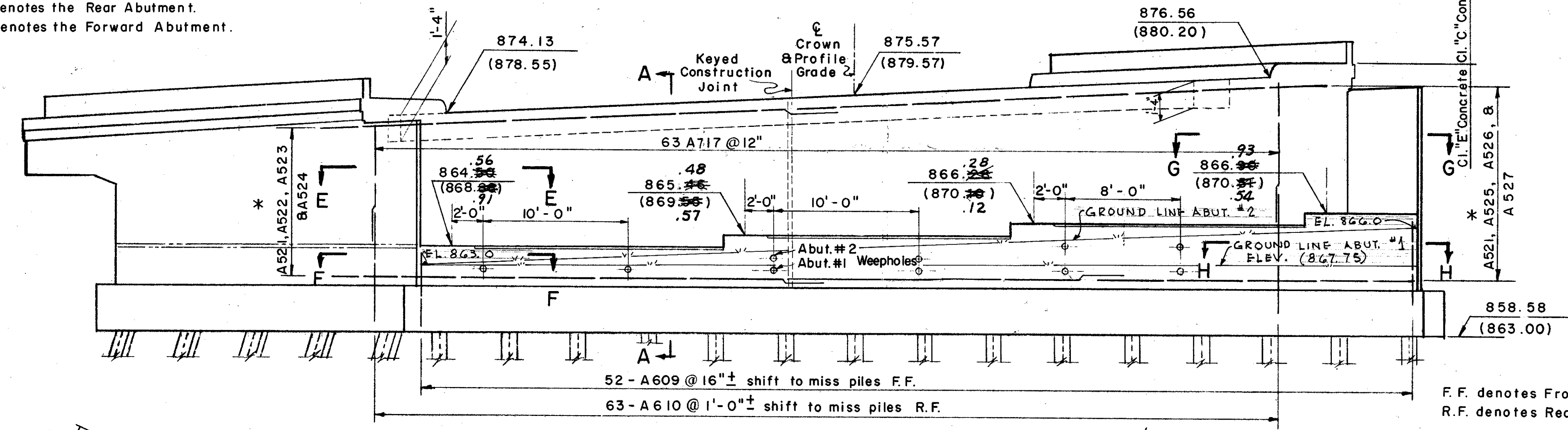


LAKE COUNTY  
SEC. LAK-I-20.03

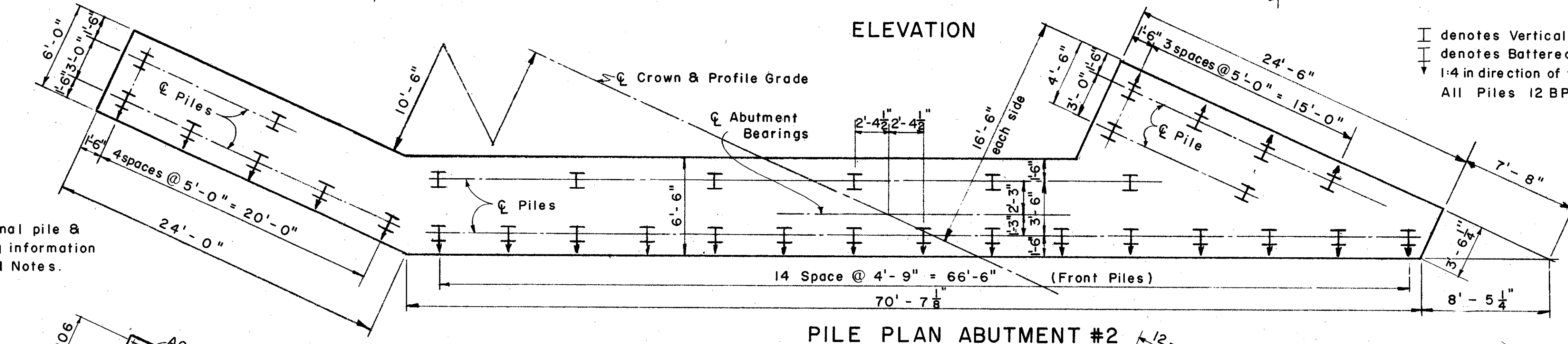
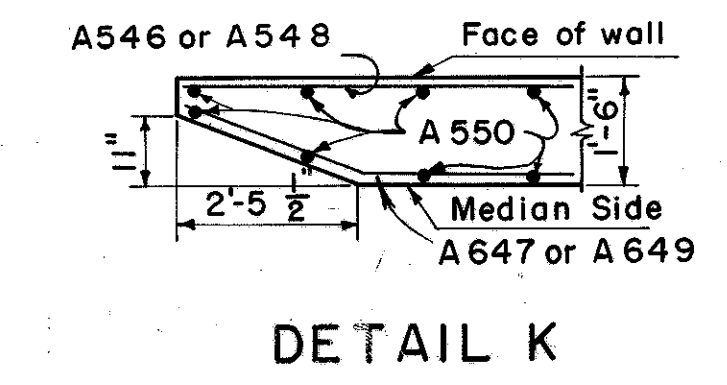
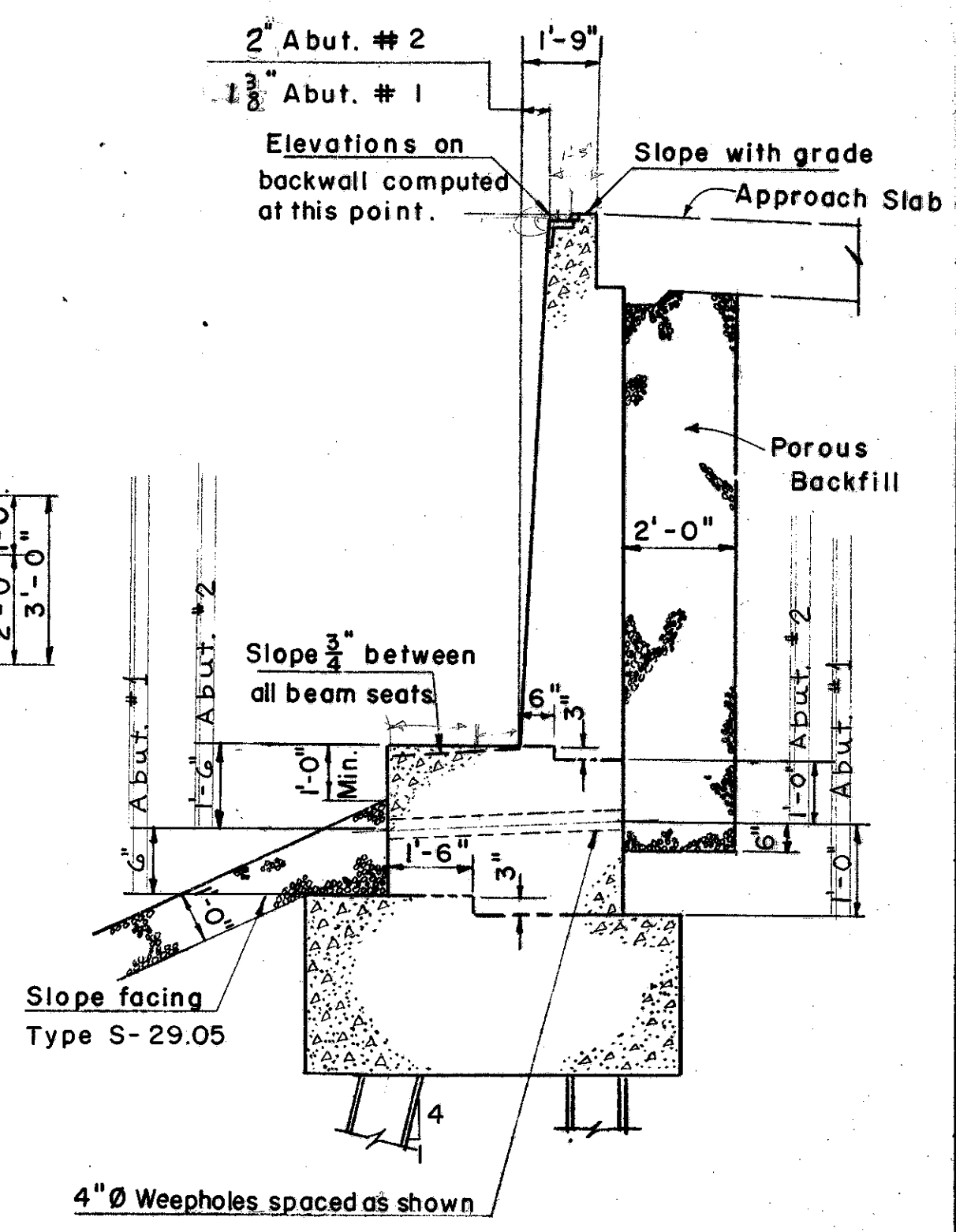
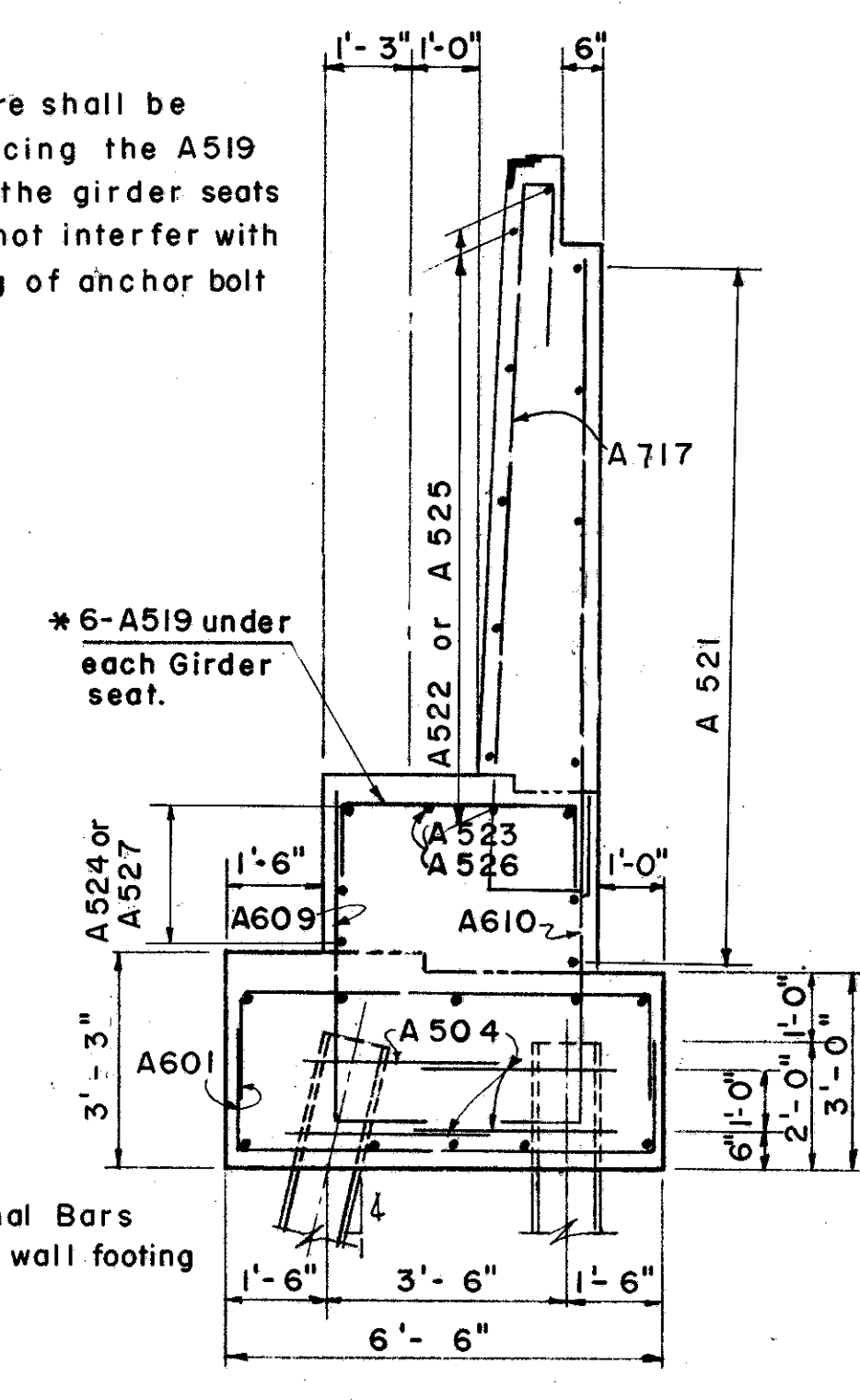


All dimensions and elevations shown are for Abut. #2. Abut. #1 is identical except as marked or shown thus. ( )

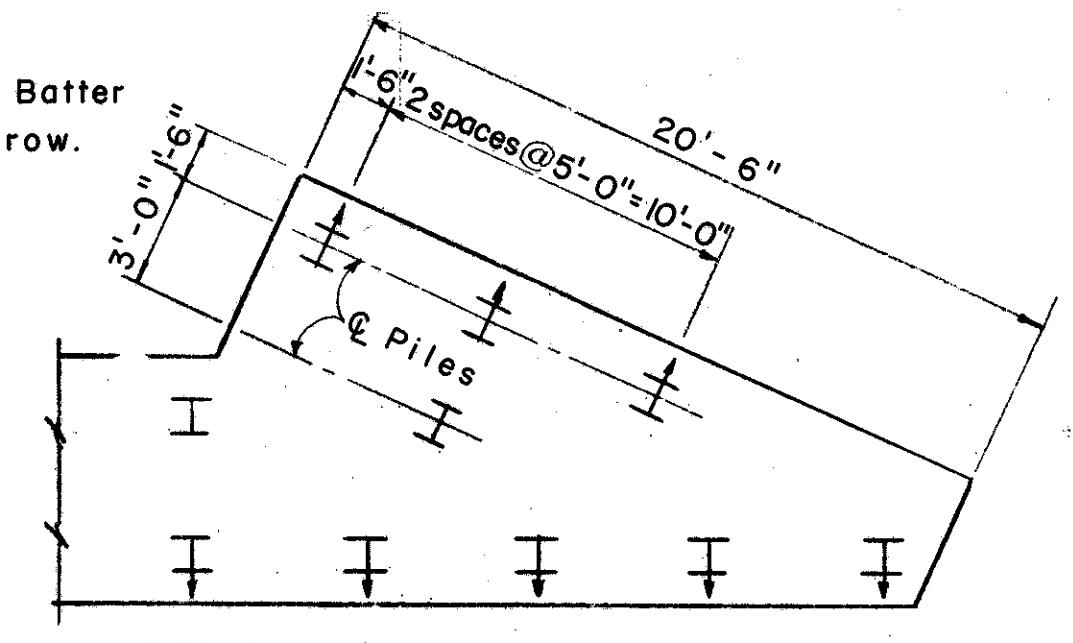
Abut. #1 denotes the Rear Abutment.  
Abut. #2 denotes the Forward Abutment.



\* Special care shall be taken in placing the A519 bars under the girder seats so they do not interfere with the drilling of anchor bolt holes.



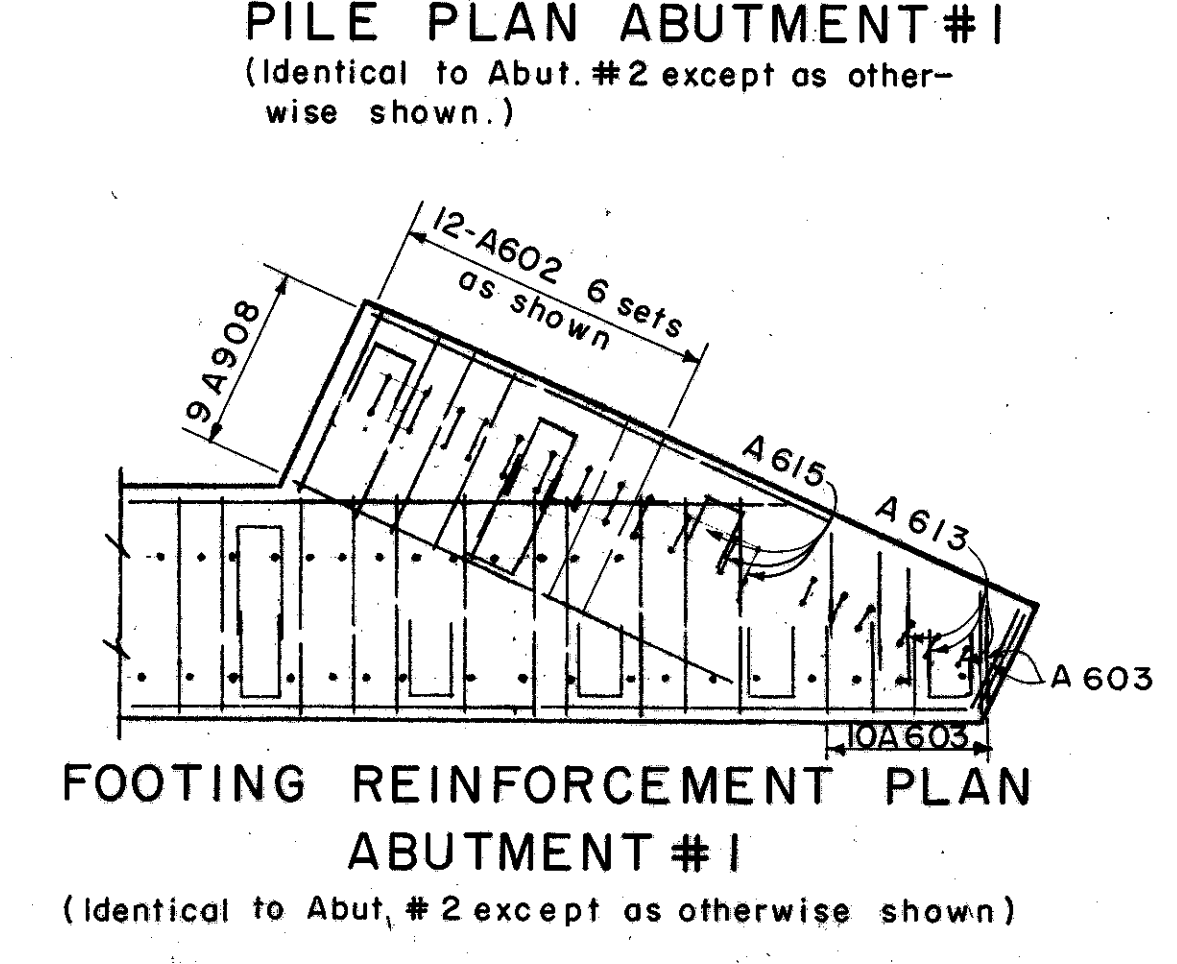
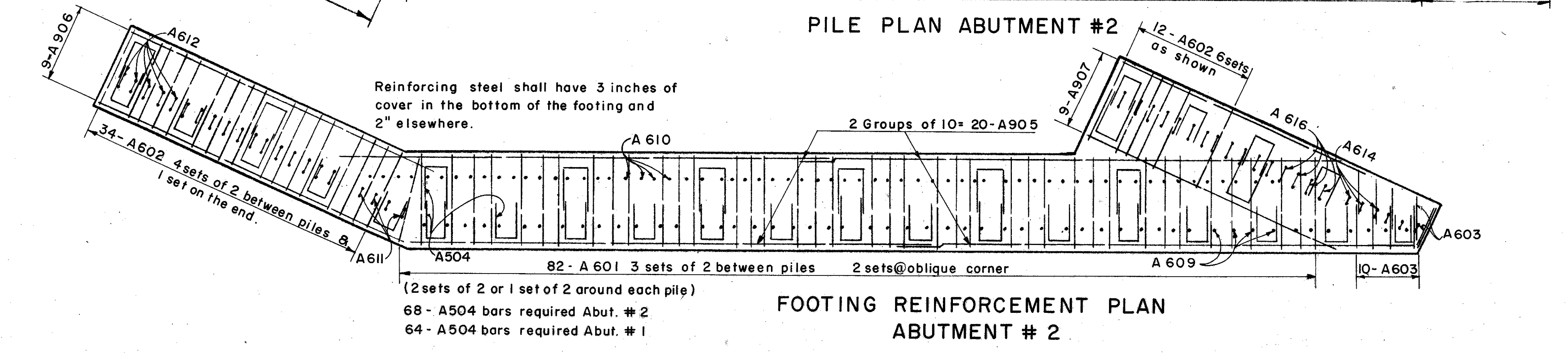
For Additional pile & pile driving information see General Notes.



\* For the quantities of bars in the Abutment breastwall & backwall (longitudinal) see Plan of Reinforcing Steel in the Abutment Breastwall & Backwall.

For additional notes see General Notes

For End Dam & Curb plate details see Std. Drwg. CSB-2-56 sheet No. 2 & 3.



SEC. C-34 FED. AID PROJ NO ACI-1103 (28)

PREPARED BY  
CAPITOL ENGINEERING ASSOCIATES, DILLSBURG, PA.  
FOR

STATE OF OHIO  
DEPARTMENT OF HIGHWAYS

ABUTMENT DETAILS  
BRIDGE NO. LAK-I-2111  
S.R.I. UNDER FORD ROAD  
LAKE COUNTY  
STA. 759+63.37

DESIGNED	DRAWN	TRACED	CHECKED	REVISED	DATE	REVISED
DRY	DRY		J.V.			1/14-58