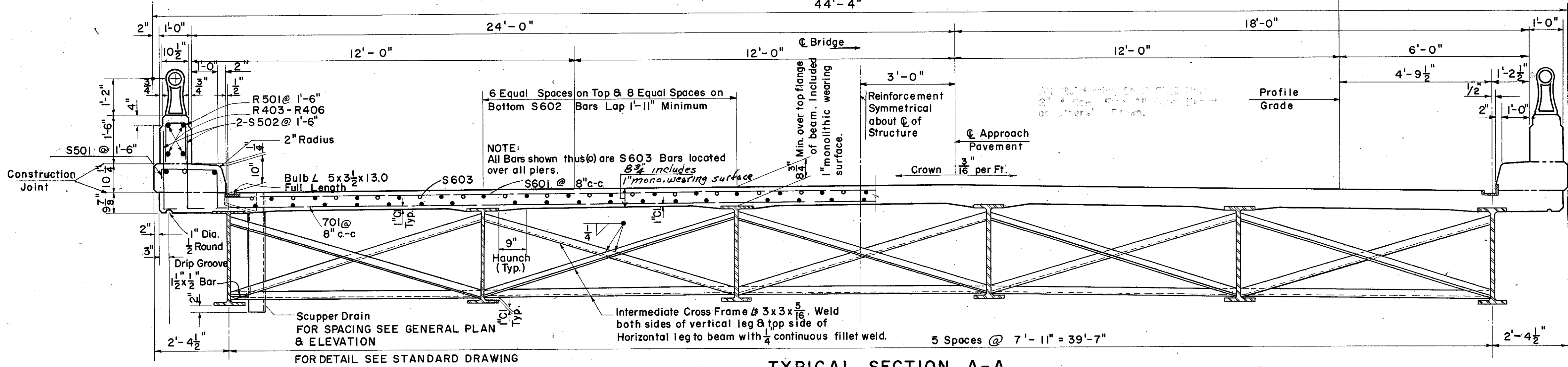
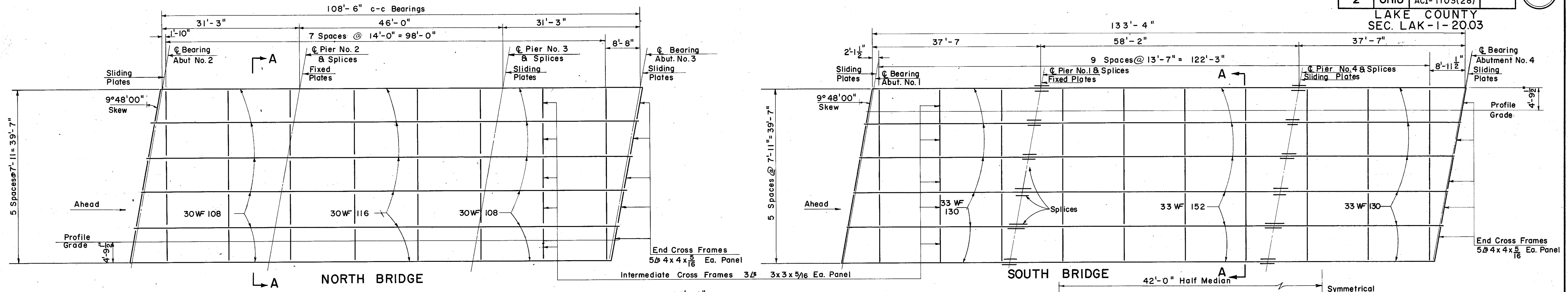


LAKE COUNTY
SEC. LAK-1-20.03

STEEL FRAMING PLAN



DEAD LOAD DEFLECTION

LOCATION	NORTH BRIDGE	SOUTH BRIDGE
	END SPAN	MIDDLE SPAN
TOTAL DEAD LOAD DEFLECTION	0	3/8

DECK CONSTRUCTION PROCEDURE

In placing the deck concrete, construction joints will be permitted parallel to the transverse reinforcing steel and near the middle of any span. Because of the flow of curing water from the surface of previously placed deck concrete, the sequence of pours shall be upgrade, starting at the lowest end (or ends) on an inclined grade or vertical curve (or at an intermediate low point for a sagged vertical curve).

NOTES:
Concrete shall be Class "C"
No camber required but any convexity shall be placed upward.

BEAM SPICE WELDING PROCEDURE

- SOUTH BRIDGE**
1. Raise the abutment ends of the beams.
 2. Butt weld the beam flanges and web using the following sequence: make one pass on each flange, then one on the web, repeat until welds are completed.
 3. Weld the bottom and top moment plates.
 4. Lower the beam ends to final position.

NORTH BRIDGE
Use same procedure except raise end of beams at abutments 2.83, 0'-0 3/8". No moment plates are required.

NOTES: (continued)
Reference shall be made to Standard Drawing AR-1-57, revised 3-1-58 for aluminum railing type "A" and concrete parapet details.

Concrete and reinforcing steel above parapet construction joint included with railing for payment item S-14.

SEC. C-34 FED. AID PROJ. NO. ACI-1103(28)

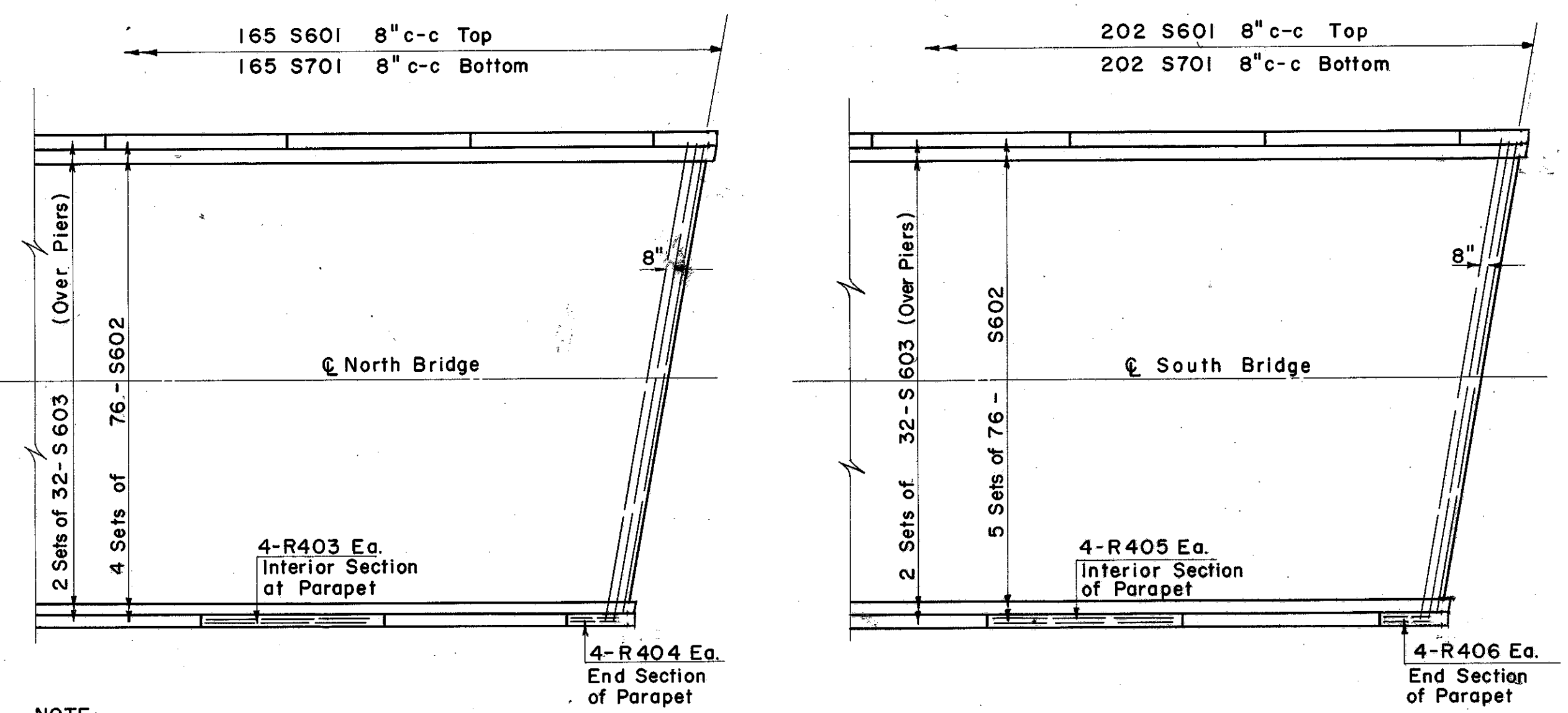
PREPARED BY
CAPITOL ENGINEERING ASSOCIATES, DILLSBURG, PA.
FOR

STATE OF OHIO
DEPARTMENT OF HIGHWAYS
DIVISION OF DESIGN AND CONSTRUCTION
BUREAU OF BRIDGES

SUPERSTRUCTURE DETAILS
BRIDGE NO. LAK-1-2012
S.R.I. OVER PAINE ROAD
LAKE COUNTY

STA. 708 + 55.10

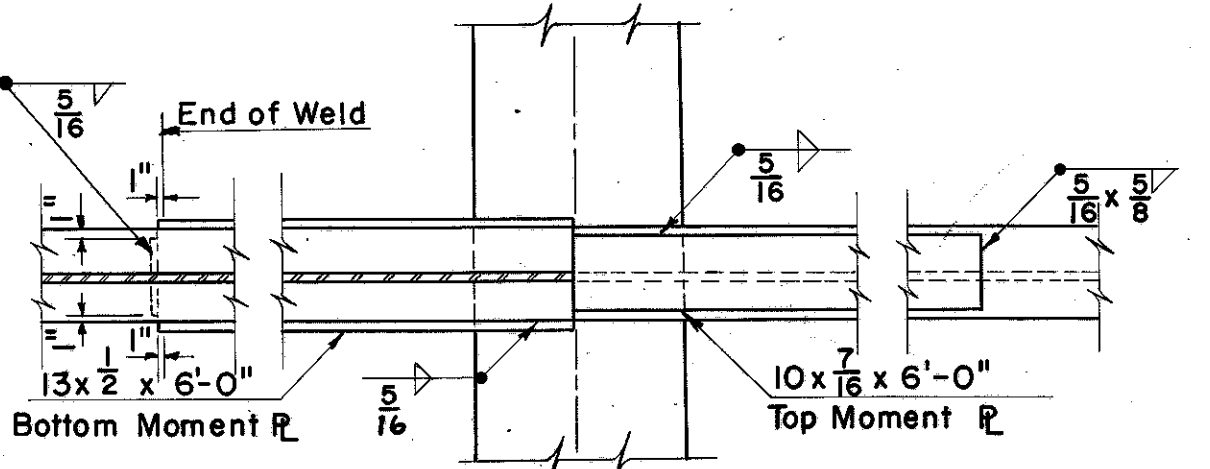
DESIGNED	DRAWN	TRACED	CHECKED	REVISED	DATE	REVISED
H.B.	H.B.	F.D.T.	π			



PART PLAN OF DECKS
OTHER END SIMILAR

DIAGRAM SHOWING STAGGER OF S603 BARS OVER PIERS

NOTE:
Welding of structural steel shall be Class "A".
Welds shown as field welds may, at the option of the Contractor, be made in the shop.



SECTION B-B

BEAM SPICE DETAIL AT PIERS 1 & 4