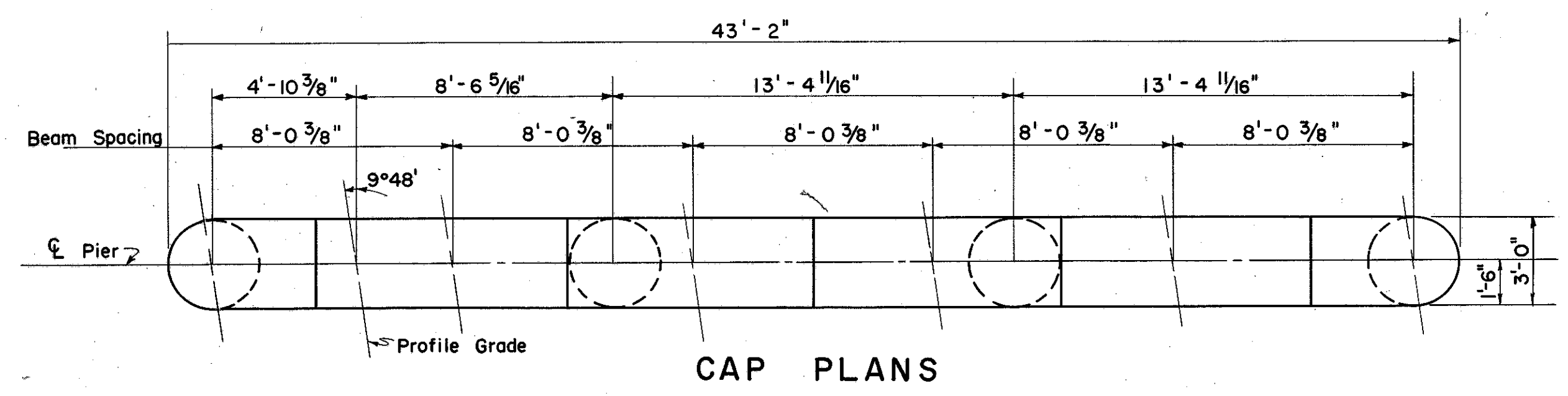
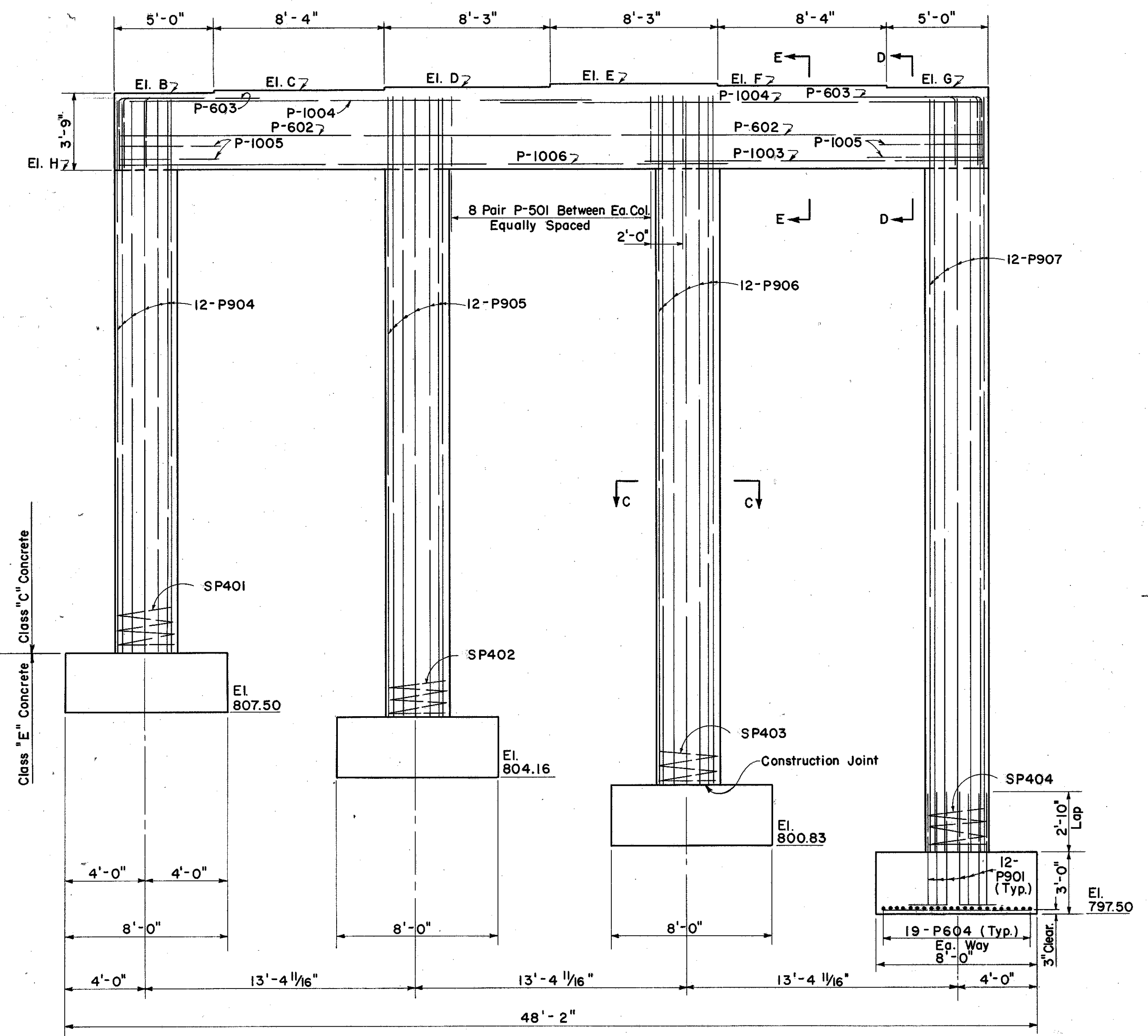


LAKE COUNTY
SEC. LAK-1-20.03

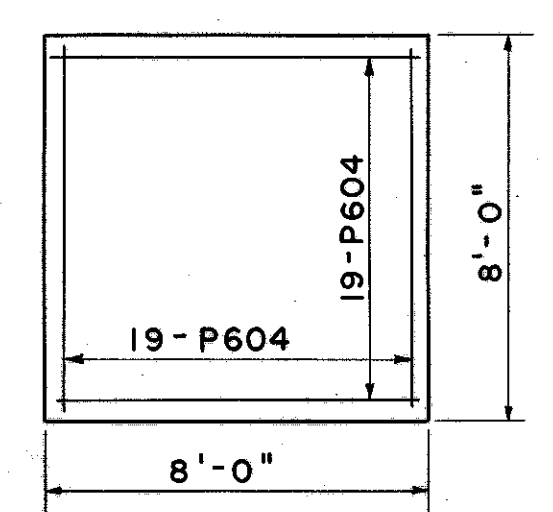


CAP PLANS

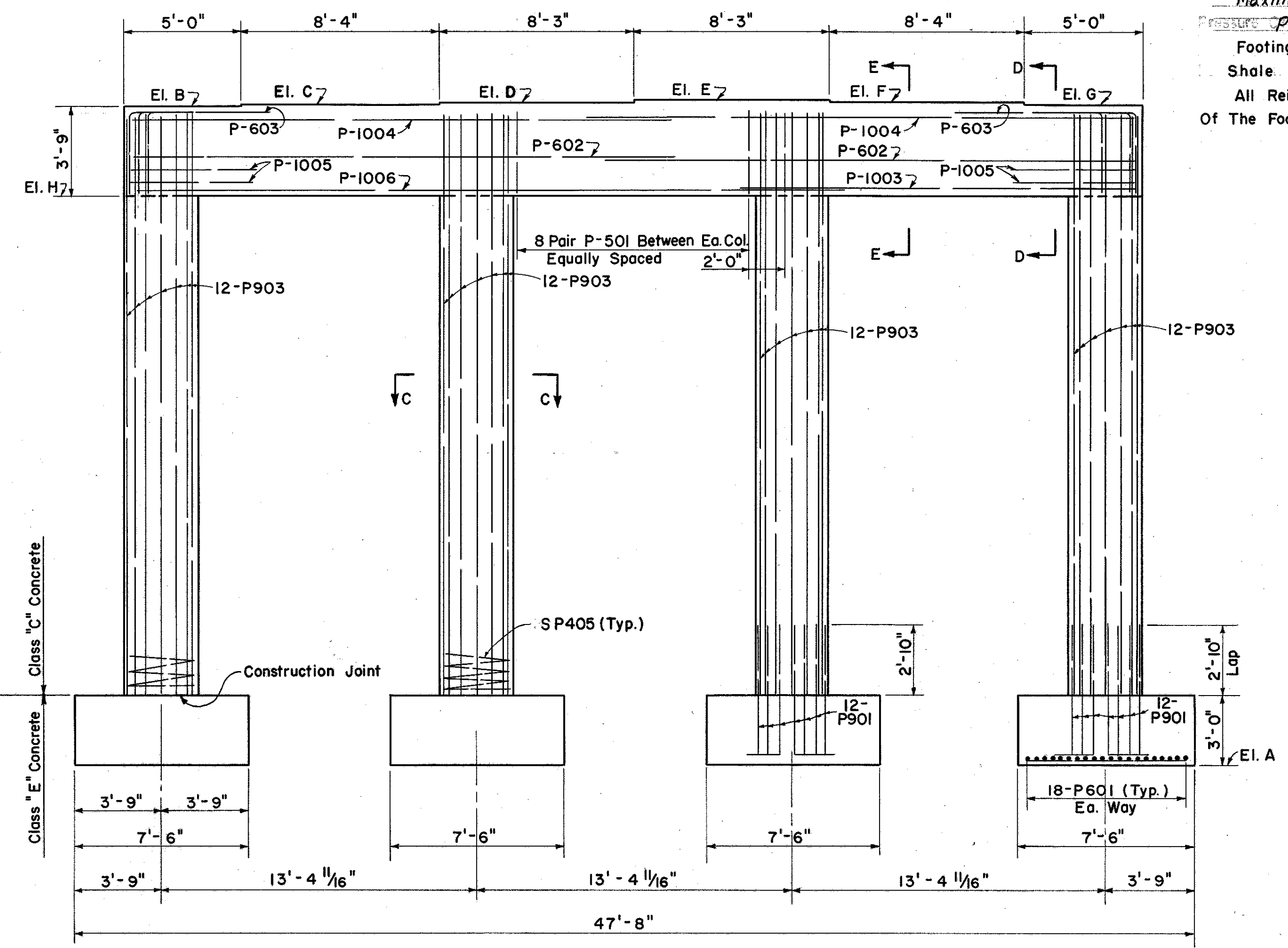
For Pier Location Plan, Sections and Additional Details See Sheet No. 190.
Special Care Shall Be Taken In Placing Reinforcing Steel In The Top Of The Pier Cap So That It Will Not Interfere With The Drilling Of Anchor Bolt Holes.
~~Maximum Bearing Pressure: Pier #1 = 5.7 Tons per ft²~~
~~Pressure Pier #2, #3, & #4 = 5.15 Tons per ft²~~
Footings Shall Extend A Minimum Of 3" Into Shale. Or To The Elevation Shown, Whichever Is Lower.
All Reinforcing Steel Shall Have 3" Of Cover In The Bottom Of The Footing And 2" Elsewhere.



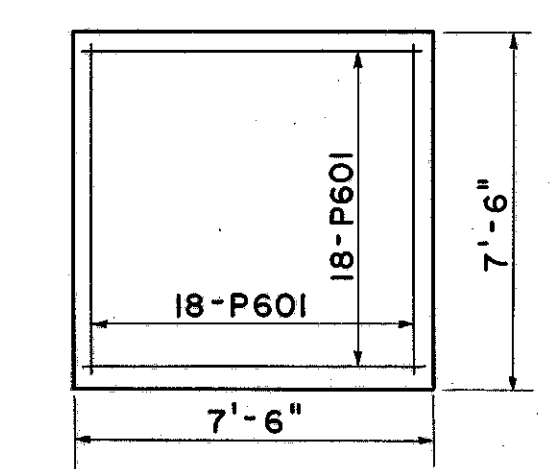
REAR PIER 1 SOUTH BRIDGE ELEVATION



TYPICAL FOOTING PIER 1



FORWARD PIER (4 SOUTH BRIDGE) ELEVATION



TYPICAL FOOTING PIERS NO. 2, 3 & 4

ELEVATIONS

LOCATION	A	B	C	D	E	F	G	H
Pier No. 1	See Pier El.	838.25	838.38	838.51	838.61	838.50	838.39	834.50
Pier No. 2	812.50	838.81	838.93	839.05	839.13	839.00	838.87	835.06
Pier No. 3	812.50	839.00	839.12	839.23	839.31	839.18	839.05	835.25
Pier No. 4	810.50	838.50	838.64	838.77	838.87	838.76	838.65	834.75
<i>REVISED PIER ELEVATIONS</i>								
Pier No. 1		838.41	838.53	838.64	838.54	838.41	838.28	834.66
Pier No. 4		838.68	838.80	838.91	838.81	838.67	838.54	834.93

Revised 12-23-58

PREPARED BY
CAPITOL ENGINEERING ASSOCIATES, DILLSBURG, PA.
FOR

STATE OF OHIO
DEPARTMENT OF HIGHWAYS
DIVISION OF DESIGN AND CONSTRUCTION
BUREAU OF BRIDGES

PIERS
BRIDGE NO. LAK-1-20.12
S.R.1 OVER PAINE ROAD
LAKE COUNTY
STA. 708 + 55.10

DESIGNED	DRAWN	TRACED	CHECKED	REVISED DATE	REVISED
T.E.B.	T.E.B.	F.D.T.	H.B.	12-23-58	