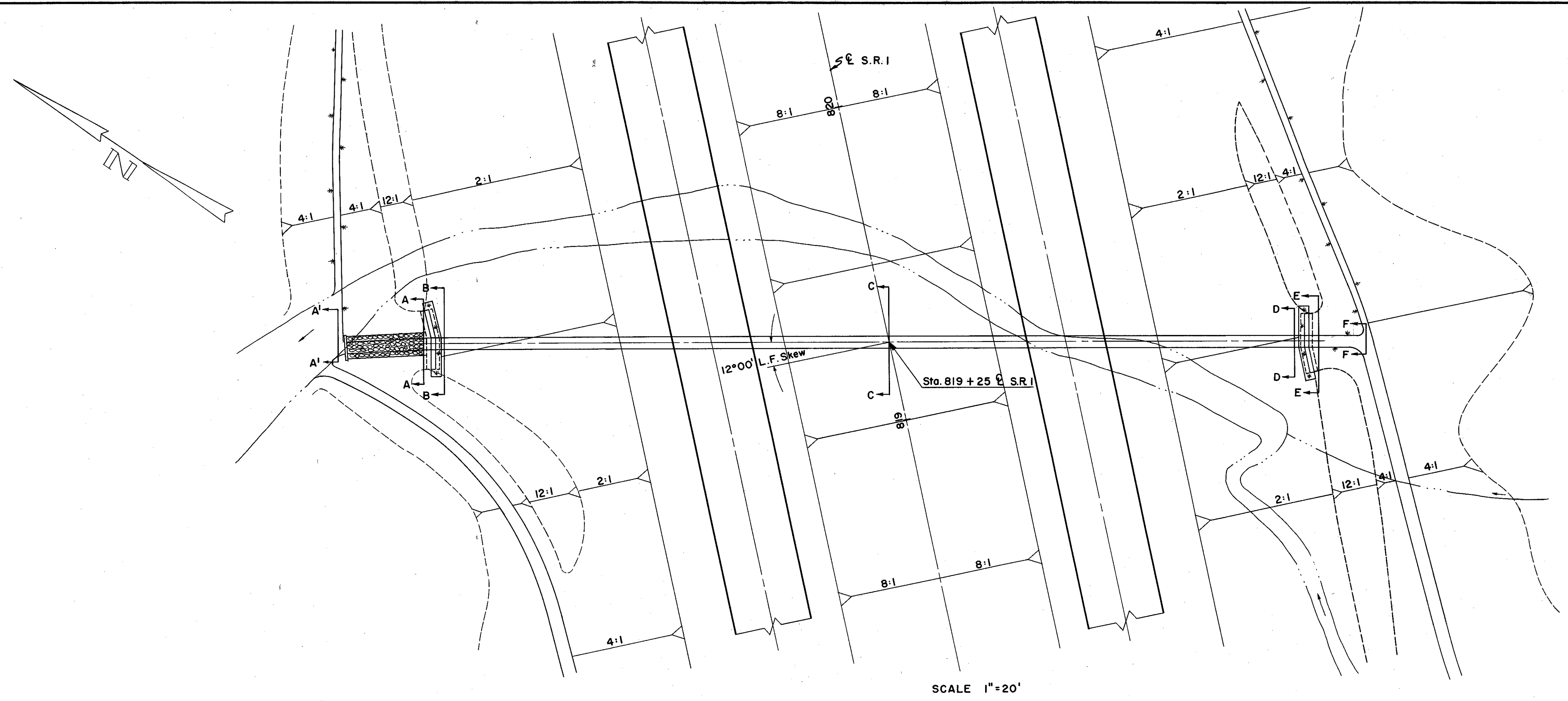


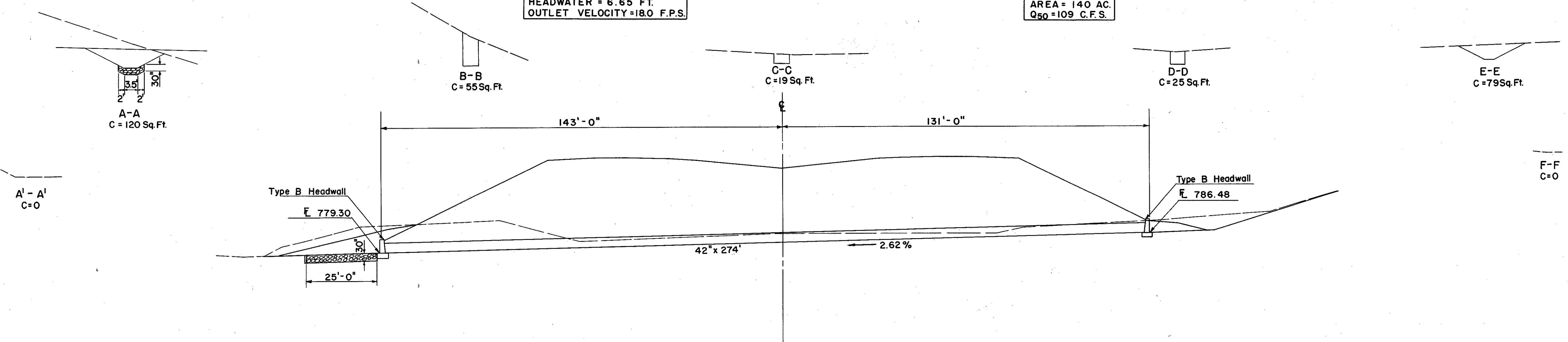
LAKE COUNTY
LAK-1-20.03



SCALE 1"=20'

HEADWATER = 6.65 FT.
OUTLET VELOCITY = 18.0 F.P.S.

AREA = 140 AC.
Q₅₀ = 109 C.F.S.



ESTIMATED QUANTITIES

E-2	Excavation for Structure	374.8 C.Y.
E-3	Excavation for Channel	81.1 C.Y.
S-1*	Concrete for Structure - Class "E"	0.47 C.Y.
S-1	Concrete for Structure - Class "C"	22.5 C.Y.
S-4	Reinforcing Steel	106.6 (d) 1081 Lbs.
S-27	42" Pipe for Roadway Culverts M-6.6(c)	274 L.F.
L-10	Dumped Rock Channel Protection	17.4 C.Y.
L-10	Sodding	28.5 S.Y.

* End Sill

CULVERT DATA

TYPE: Pipe Culvert - Type B Headwalls
 SIZE: 42" x 274"
 WORK REQ'D: Build a Pipe Culvert with Type B Headwalls
 Rt. & Lt. and 25' of Dumped Rock and
 End Sill at Outlet.

STRUCTURE NO. LAK-1-2222