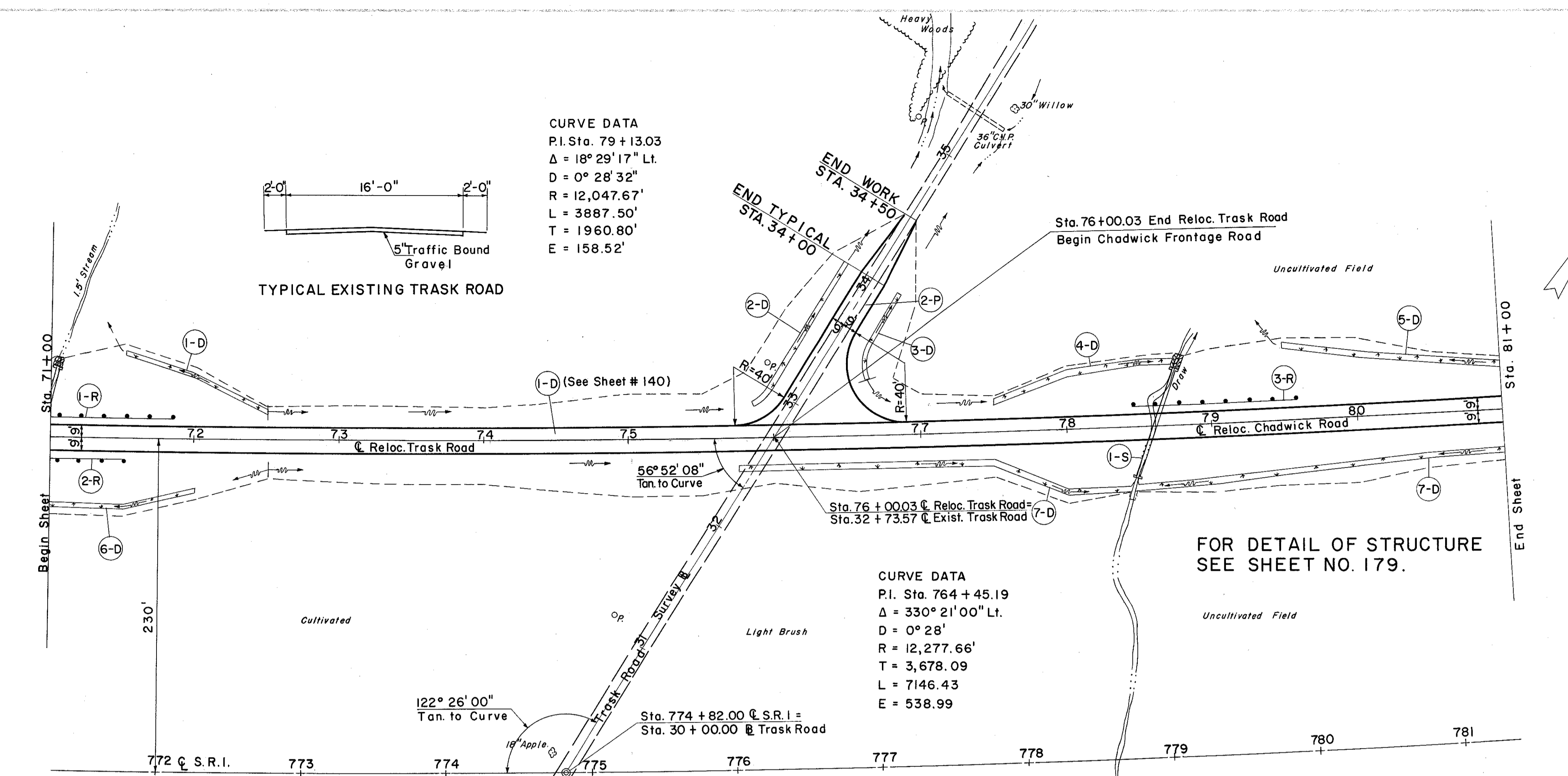
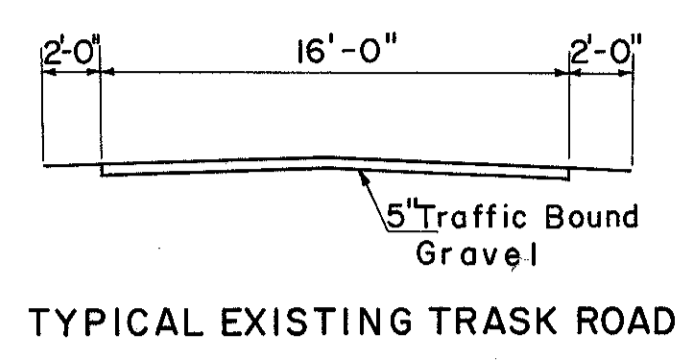


LAKE COUNTY
LAK-I-20.03

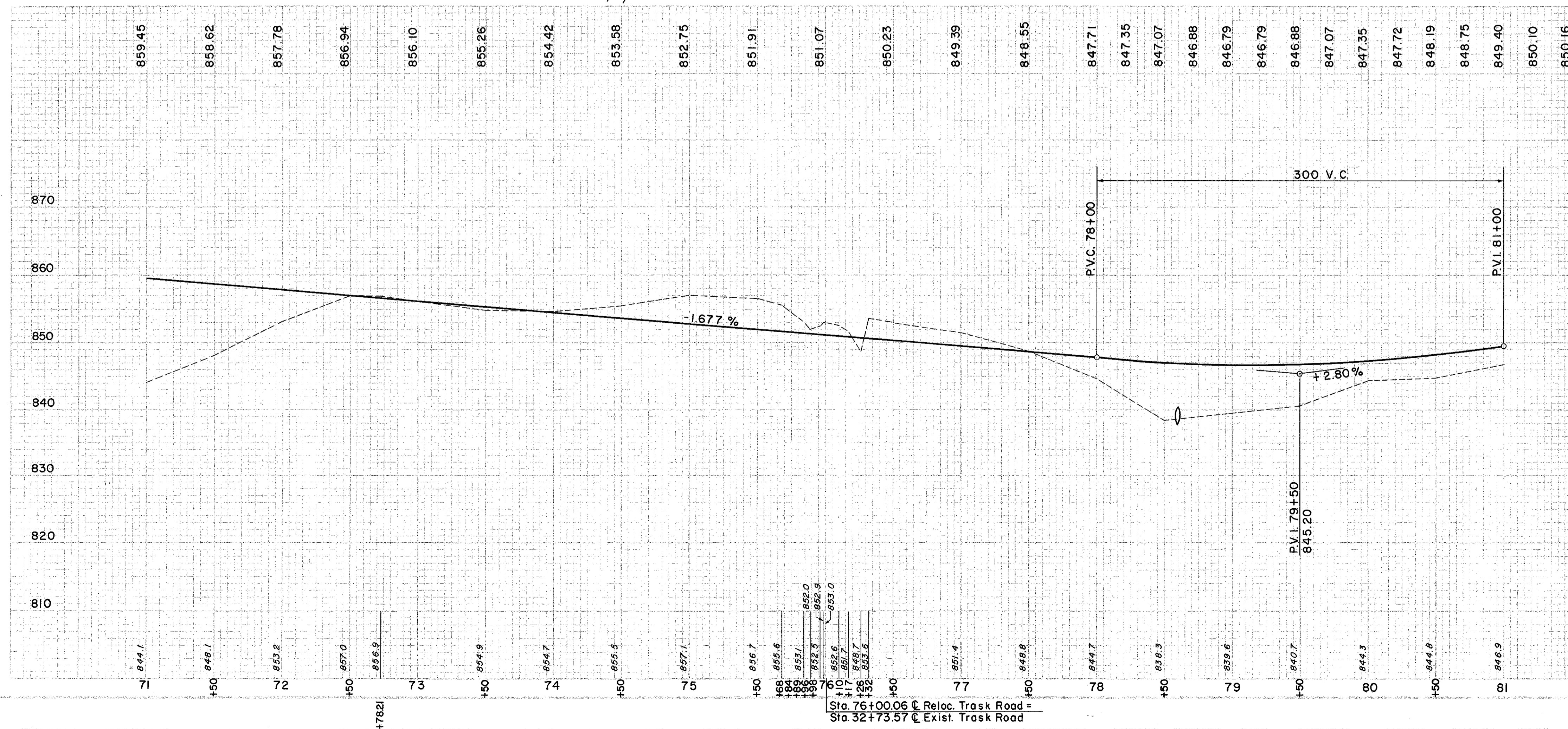


CURVE DATA
P.I. Sta. 79 + 13.03
 $\Delta = 18^\circ 29' 17''$ Lt.
 $D = 0^\circ 28' 32''$
 $R = 12,047.67'$
 $L = 3887.50'$
 $T = 1960.80'$
 $E = 158.52'$

CURVE DATA
P.I. Sta. 764 + 45.19
 $\Delta = 330^\circ 21' 00''$ Lt.
 $D = 0^\circ 28'$
 $R = 12,277.66'$
 $L = 7146.43$
 $T = 3,678.09$
 $E = 538.99$



FOR DETAIL OF STRUCTURE
SEE SHEET NO. 179.



(S) STRUCTURE

REF. NO.	STATION	FROM	TO	I-10	L-10	S-1	S-27
I-S	78+60						
E-2							
E-3							
E-27							

(P) PAVEMENT

REF. NO.	STATION	FROM	TO	GAL.	GAL.	C.Y.	C.Y.	C.Y.	C.Y.	S.Y.	S.Y.
2-P	32+82.57	34+50.00	41.0	114	1255	1.8	3.6	160	165.3	53.8	45.5

DRAINAGE

REF. NO.	STATION	FROM	TO	L-10	SODDING	S.Y.
I-D	71+50	72+50	LT.	35.0		
2-D	32+84	34+100	LT.	42.5		
3-D	33+40	34+100	RT.	19.0		
4-D	77+50	78+75	LT.	80.0		
5-D	79+50	81+00	LT.	74.0		
6-D	70+88	72+00	RT.	40.0		
7-D	75+75	81+50	RT.	258.5		

SODDING LEFT DITCH

STATION	DEPTH OF SODDING	SLOPES	WIDTH OF SODDING	LENGTH OF SODDING	S.Y.
71+50	.15	4:1	4:4	100	35.0
72+50	.15	4:1	4:4	116	42.5
34+100 Lt.	.16	4:1	4:4	60	19.0
33+40 Rt.	.30	4:1	4:4	175	80.0
77+50	.30	4:1	3:1	50	25.5
79+50	.40	4:1	3:1	100	48.5
80+00	.30	4:1	3:1	4.4	
81+00	.30	4:1	3:1	4.4	
SUB TOTAL					250.5

SODDING RIGHT DITCH

STATION	DEPTH OF SODDING	SLOPES	WIDTH OF SODDING	LENGTH OF SODDING	S.Y.
70+88	.35	4:1	3:1	4.5	
71+00	.20	4:1	3:1	3.1	
72+00	.20	4:1	3:1	3.1	
75+75	.38	4:1	2:1	4.3	
77+50	.42	4:1	2:1	4.5	
78+50	.30	4:1	3:1	4.1	
80+00	.30	4:1	3:1	4.6	
81+00	.20	4:1	3:1	3.4	
SUB TOTAL					298.5

ROADWAY

REF. NO.	STATION	FROM	TO	SIDE	I-15	RAIL	CABLE	TYP. CABLES	L.F.
I-R	71+04	71+84	LT.		80				
2-R	71+04	71+52	RT.		48				
3-R	78+45	79+57	LT.		112				
									TOTAL
									240

EXCAVATION = 4016 C.Y.
EMBANKMENT = 4884 C.Y.
EMBANKMENT + 22 = 5958 C.Y.