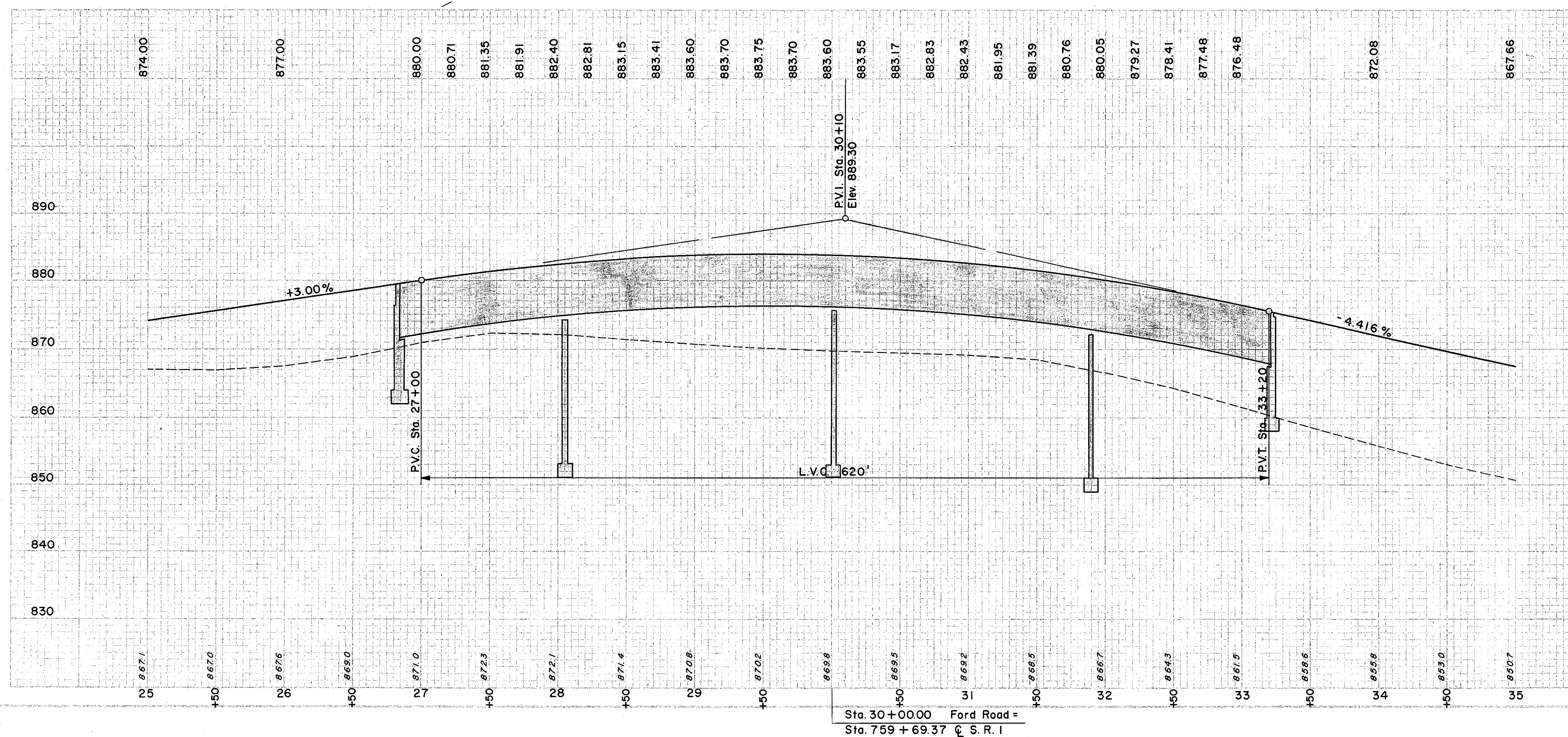
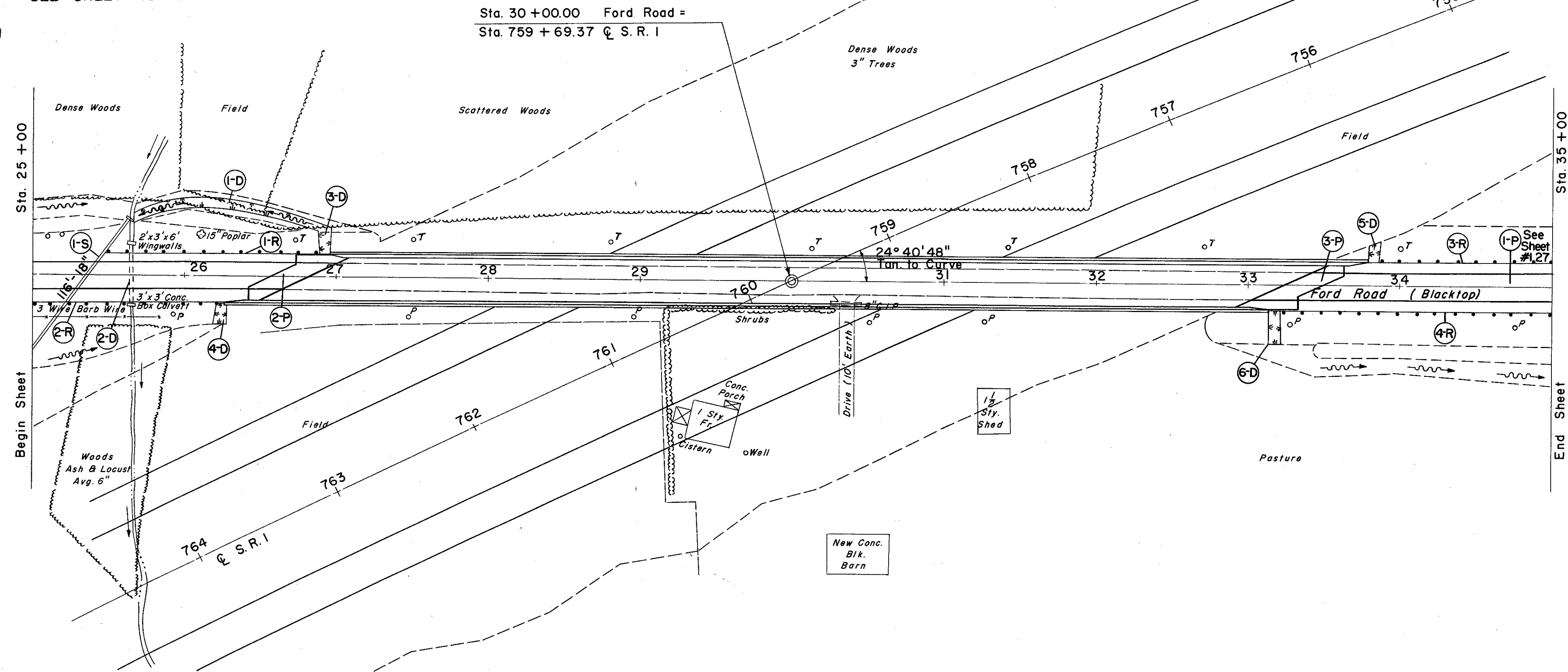


LAKE COUNTY
LAK-I-20.03

FOR DETAIL OF STRUCTURE
SEE SHEET NO. 176



(P) APPROACH SLABS

REF. NO.	STATION	REIN. CONC. APPR. SLAB (S.Y.)
2-P	26+57.73	26+62.73
3-P	33+23.81	33+48.81
	TOTAL	150

(D) DRAINAGE

REF. NO.	STATION	SIDE OR		L-10	SPEC. SODDING	SLOPE BERM PROTECT.	REIN. CONC. APPR. SLAB (S.Y.)
		From	To				
1-D	25+65	Lt.	27+00	60	13	17	
2-D	25+95	Lt.	26+25	12	10	17	
3-D	26+95	Rt.	33+85	10	10	17	
4-D	26+25	Lt.	33+20	17			
5-D	33+85	Lt.					
6-D	33+20	Rt.					

(S) STRUCTURES

REF. NO.	STATION	STRUCTURE	C.Y.	S.Y.
E-2	25+27	EXCAV FOR SODDING STRUCT.	35	116
L-10		CONC. FOR SODDING STRUCT.		9
S-1		CONC. FOR SODDING STRUCT.		6
	From 25+36	To		
I-S	25+36			

SODDING - LEFT DITCH

STATION	DEPTH FT.	SLOPE	WIDTH FT.	LENGTH FT.	S.Y.
25+65	0.25	4:1	4.0	135	60
27+00	0.25	4:1	4.0	4.0	
				SUB TOTAL	60

ROADWAY

REF. NO.	STATION	SIDE		I-15 GUARD RAIL CURB (TYPE/DEEP) NO. 2-B	L.F.
		From	To		
1-R	25+50	Lt.	27+00	150	150
2-R	25+00	Rt.	26+25	125	125
3-R	33+75	Lt.	35+00	125	125
4-R	33+14	Rt.	35+00	187.5	187.5
		TOTAL		587.5	

EXCAVATION	293 C.Y.
EMBANKMENT	6635 C.Y.
22	8095 C.Y.