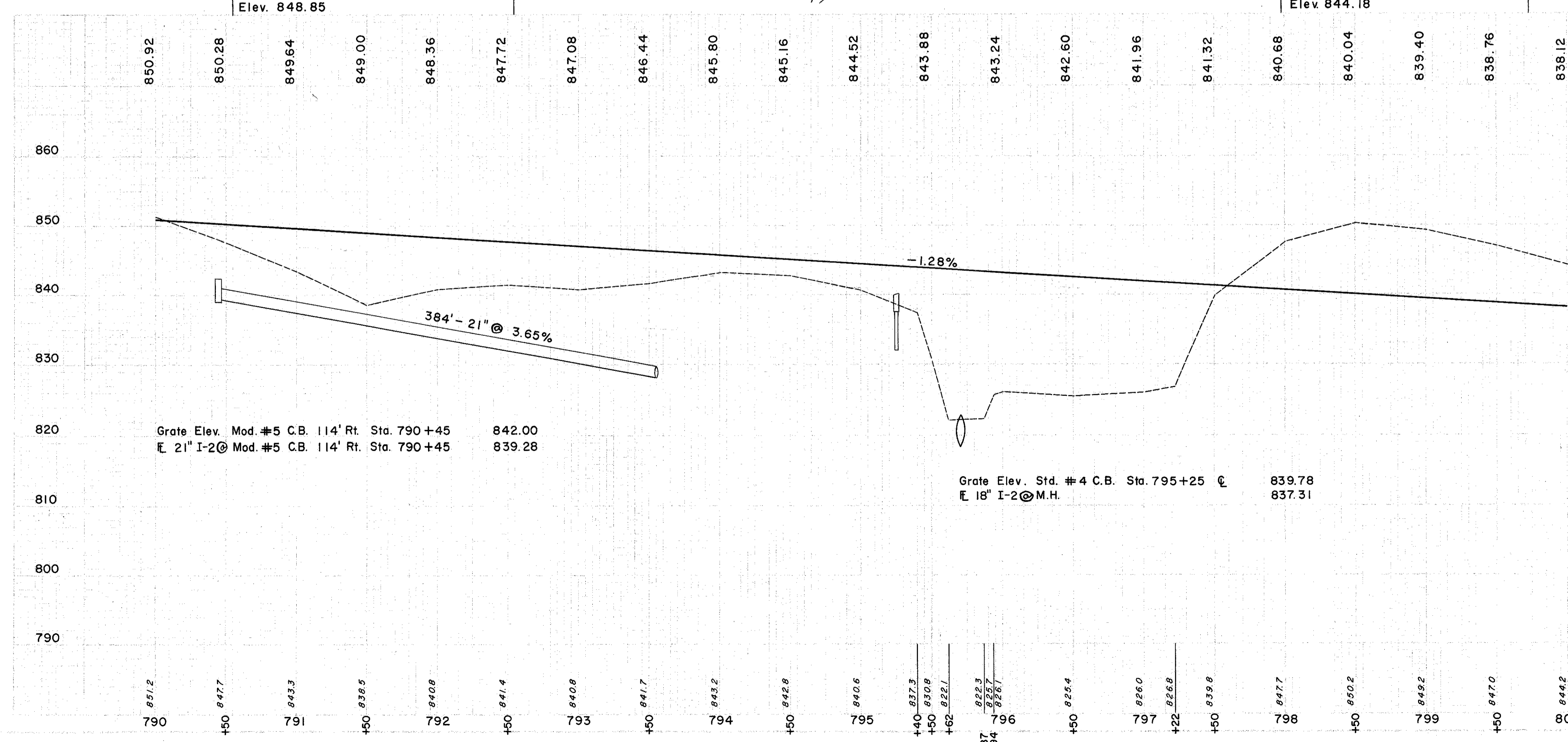
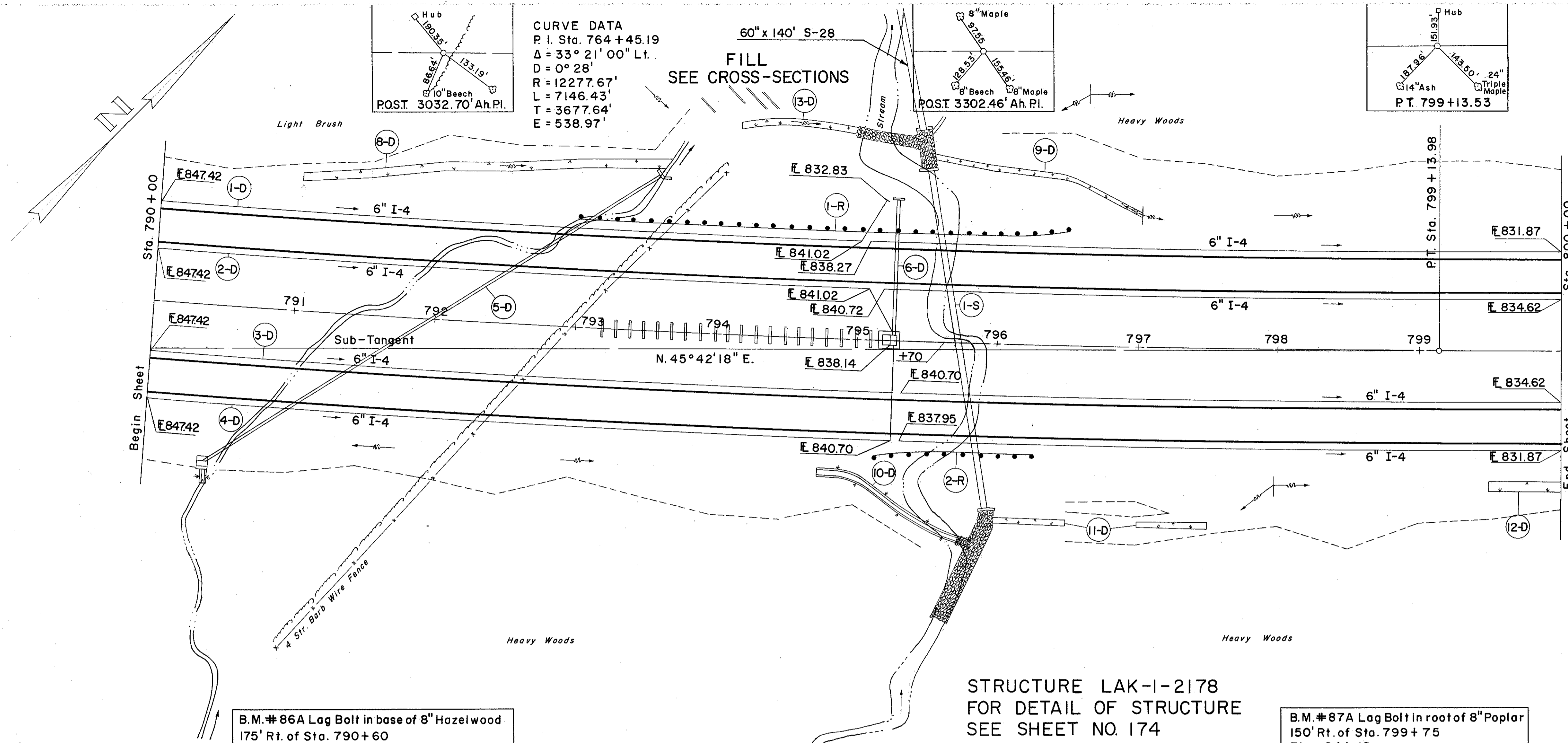


LAKE COUNTY
LAK-I-2003



REF NO.	STATION	SIDE OR STRUCT.	SODDING		RIGHT DITCH		STORM SEWER		DRAIN		CATCH BASIN		CONCRETE		SODDING		SEWER		STORM		GUTTER		REINFORCED		DRAINAGE		
			FT	S.Y.	WIDTH	LENGTH	SEC.	DEPTH	INCREAS.	ER	TEE	TEE	CONC.	CL.	CL.	CL.	CL.	CL.	CL.	CL.	CL.	CL.	CL.	CL.	CL.	CL.	CL.
I-1	790+00	800+00	10	10	3.0	50	M-6.5(G)	18"	18"	6"	6"	MOD#5	3	3	3	3	3	3	3	3	3	3	3	3	3	3	3
I-2	790+00	800+00	10	10	3.0	50	M-6.5(G)	18"	18"	6"	6"	MOD#5	3	3	3	3	3	3	3	3	3	3	3	3	3	3	3
I-3	790+00	800+00	10	10	3.0	50	M-6.5(G)	18"	18"	6"	6"	MOD#5	3	3	3	3	3	3	3	3	3	3	3	3	3	3	3
I-4	790+00	800+00	10	10	3.0	50	M-6.5(G)	18"	18"	6"	6"	MOD#5	3	3	3	3	3	3	3	3	3	3	3	3	3	3	3
I-5	790+00	800+00	10	10	3.0	50	M-6.5(G)	18"	18"	6"	6"	MOD#5	3	3	3	3	3	3	3	3	3	3	3	3	3	3	3
I-6	790+00	800+00	10	10	3.0	50	M-6.5(G)	18"	18"	6"	6"	MOD#5	3	3	3	3	3	3	3	3	3	3	3	3	3	3	3
I-7	790+00	800+00	10	10	3.0	50	M-6.5(G)	18"	18"	6"	6"	MOD#5	3	3	3	3	3	3	3	3	3	3	3	3	3	3	3
I-8	790+00	800+00	10	10	3.0	50	M-6.5(G)	18"	18"	6"	6"	MOD#5	3	3	3	3	3	3	3	3	3	3	3	3	3	3	3
I-9	790+00	800+00	10	10	3.0	50	M-6.5(G)	18"	18"	6"	6"	MOD#5	3	3	3	3	3	3	3	3	3	3	3	3	3	3	3
I-10	790+00	800+00	10	10	3.0	50	M-6.5(G)	18"	18"	6"	6"	MOD#5	3	3	3	3	3	3	3	3	3	3	3	3	3	3	3
I-11	790+00	800+00	10	10	3.0	50	M-6.5(G)	18"	18"	6"	6"	MOD#5	3	3	3	3	3	3	3	3	3	3	3	3	3	3	3
I-12	790+00	800+00	10	10	3.0	50	M-6.5(G)	18"	18"	6"	6"	MOD#5	3	3	3	3	3	3	3	3	3	3	3	3	3	3	3
I-13	790+00	800+00	10	10	3.0	50	M-6.5(G)	18"	18"	6"	6"	MOD#5	3	3	3	3	3	3	3	3	3	3	3	3	3	3	3
I-14	790+00	800+00	10	10	3.0	50	M-6.5(G)	18"	18"	6"	6"	MOD#5	3	3	3	3	3	3	3	3	3	3	3	3	3	3	3
I-15	790+00	800+00	10	10	3.0	50	M-6.5(G)	18"	18"	6"	6"	MOD#5	3	3	3	3	3	3	3	3	3	3	3	3	3	3	3
I-16	790+00	800+00	10	10	3.0	50	M-6.5(G)	18"	18"	6"	6"	MOD#5	3	3	3	3	3	3	3	3	3	3	3	3	3	3	3
I-17	790+00	800+00	10	10	3.0	50	M-6.5(G)	18"	18"	6"	6"	MOD#5	3	3	3	3	3	3	3	3	3	3	3	3	3	3	3
I-18	790+00	800+00	10	10	3.0	50	M-6.5(G)	18"	18"	6"	6"	MOD#5	3	3	3	3	3	3	3	3	3	3	3	3	3	3	3
I-19	790+00	800+00	10	10	3.0	50	M-6.5(G)	18"	18"	6"	6"	MOD#5	3	3	3	3	3	3	3	3	3	3	3	3	3	3	3
I-20	790+00	800+00	10	10	3.0	50	M-6.5(G)	18"	18"	6"	6"	MOD#5	3	3	3	3	3	3	3	3	3	3	3	3	3	3	3
I-21	790+00	800+00	10	10	3.0	50	M-6.5(G)	18"	18"	6"	6"	MOD#5	3	3	3	3	3	3	3	3	3	3	3	3	3	3	3
I-22	790+00	800+00	10	10	3.0	50	M-6.5(G)	18"	18"	6"	6"	MOD#5	3	3	3	3	3	3	3	3	3	3	3	3	3	3	3
I-23	790+00	800+00	10	10	3.0	50	M-6.5(G)	18"	18"	6"	6"	MOD#5	3	3	3	3	3	3	3	3	3	3	3	3	3	3	3
I-24	790+00	800+00	10	10	3.0	50	M-6.5(G)	18"	18"	6"	6"	MOD#5	3	3	3	3	3	3	3	3	3	3	3	3	3	3	3
I-25	790+00	800+00	10	10	3.0	50	M-6.5(G)	18"	18"	6"	6"	MOD#5	3	3	3	3	3	3	3	3	3	3	3	3	3	3	3
I-26	790+00	800+00	10	10	3.0	50	M-6.5(G)	18"	18"	6"	6"	MOD#5	3	3	3	3	3	3	3	3	3	3	3	3	3	3	3
I-27	790+00	800+00	10	10	3.0	50	M-6.5(G)	18"	18"	6"	6"	MOD#5	3	3	3	3	3	3	3	3	3	3	3	3	3	3	3
I-28	790+00	800+00	10	10	3.0	50	M-6.5(G)	18"	18"	6"	6"	MOD#5	3	3	3	3	3	3	3	3	3	3	3	3	3	3	3
I-29	790+00	800+00	10	10	3.0	50	M-6.5(G)	18"	18"	6"	6"	MOD#5	3	3	3	3	3	3	3	3	3	3	3	3	3	3	3
I-30	790+00	800+00	10	10	3.0	50	M-6.5(G)	18"	18"	6"	6"	MOD#5	3	3	3	3	3	3	3	3	3	3	3	3	3	3	3
I-31	790+00	800+00	10	10	3.0	50	M-6.5(G)	18"	18"	6"	6"	MOD#5	3	3	3	3	3	3	3	3	3	3	3	3	3	3	3
I-32	790+00	800+00	10	10	3.0	50	M-6.5(G)	18"	18"	6"	6"	MOD#5	3	3	3	3	3	3	3	3	3	3	3	3	3	3	3
I-33	790+00	800+00	10	10	3.0	50	M-6.5(G)	18"	18"	6"	6"	MOD#5	3	3	3	3	3	3	3	3	3	3	3	3	3	3	3
I-34	790+00	800+00	10	10	3.0	50	M-6.5(G)	18"	18"	6"	6"	MOD#5	3	3	3	3	3	3	3	3	3	3	3	3	3	3	3
I-35	790+00	800+00	10	10	3.0	50	M-6.5(G)	18"	18"	6"	6"	MOD#5	3	3	3	3	3	3	3	3	3	3	3	3	3	3	3
I-36	790+00	800+00	10	10	3.0	50	M-6.5(G)	18"	18"	6"	6"	MOD#5	3	3	3	3	3	3	3	3	3	3	3	3	3	3	3
I-37	790+00	800+00	10	10	3.0	50	M-6.5(G)	18"	18"	6"	6"	MOD#5	3	3	3	3	3	3	3	3	3	3	3	3	3	3	3
I-38	790+00	800+00	10	10	3.0	50	M-6.5(G)	18"	18"	6"	6"	MOD#5	3	3	3	3	3	3	3	3	3	3	3	3	3	3	3
I-39	790+00	800+00	10	10	3.0	50	M-6.5(G)	18"	18"	6"	6"	MOD#5	3	3	3	3	3	3	3	3	3	3	3	3	3	3	3
I-40	790+00	800+00	10	10	3.0	50	M-6.5(G)	18"	18"	6"	6"	MOD#5	3	3	3	3	3	3	3	3	3	3	3	3	3	3	3
I-41	790+00	800+00	10	10	3.0	50	M-6.5(G)	18"	18"	6"	6"	MOD#5	3	3	3	3	3	3	3	3	3	3	3	3	3	3	3
I-42	790+00	800+00	10	10	3.0	50	M-6.5(G)	18"	18"	6"	6"	MOD#5	3	3	3	3	3	3	3	3	3	3	3	3	3	3	3
I-43	790+00	800+00	10	10	3.0	50	M-6.5(G)	18"	18"	6"	6"	MOD#5	3	3	3	3	3	3	3	3	3	3	3	3	3	3	3
I-44	790+00	800+00	10	10	3.0	50	M-6.5(G)	18"	18"	6"	6"	MOD#5	3	3	3	3	3	3	3	3	3	3	3	3	3	3	3
I-45	790+00	800+00	10	10	3.0	50	M-6.5(G)	18"	18"	6"	6"	MOD#5	3	3	3	3	3	3	3	3	3	3	3	3	3	3	3
I-46	790+00	800+00	10	10	3.0	50	M-6.5(G)	18"	18"	6"	6"	MOD#5	3	3	3	3	3	3	3	3	3	3	3	3	3	3	3
I-47	790+00	800+00	10	10	3.0	50	M-6.5(G)	18"	18"	6"	6"	MOD#5	3	3	3	3	3	3	3	3	3	3	3	3	3	3	3
I-48	790+00	800+00	10	10	3.0	50	M-6.5(G)	18"	18"	6"	6"	MOD#5	3	3	3	3	3	3	3	3	3	3	3	3	3	3	3
I-49	790+00	800+00	10	10	3.0	50	M-6.5(G)	18"	18"	6"	6"	MOD#5	3	3	3	3	3	3	3	3	3	3	3	3	3	3	3
I-50	790+00	800+00	10	10	3.0	50	M-6.5(G)	18"	18"	6"	6"	MOD#5	3	3	3												