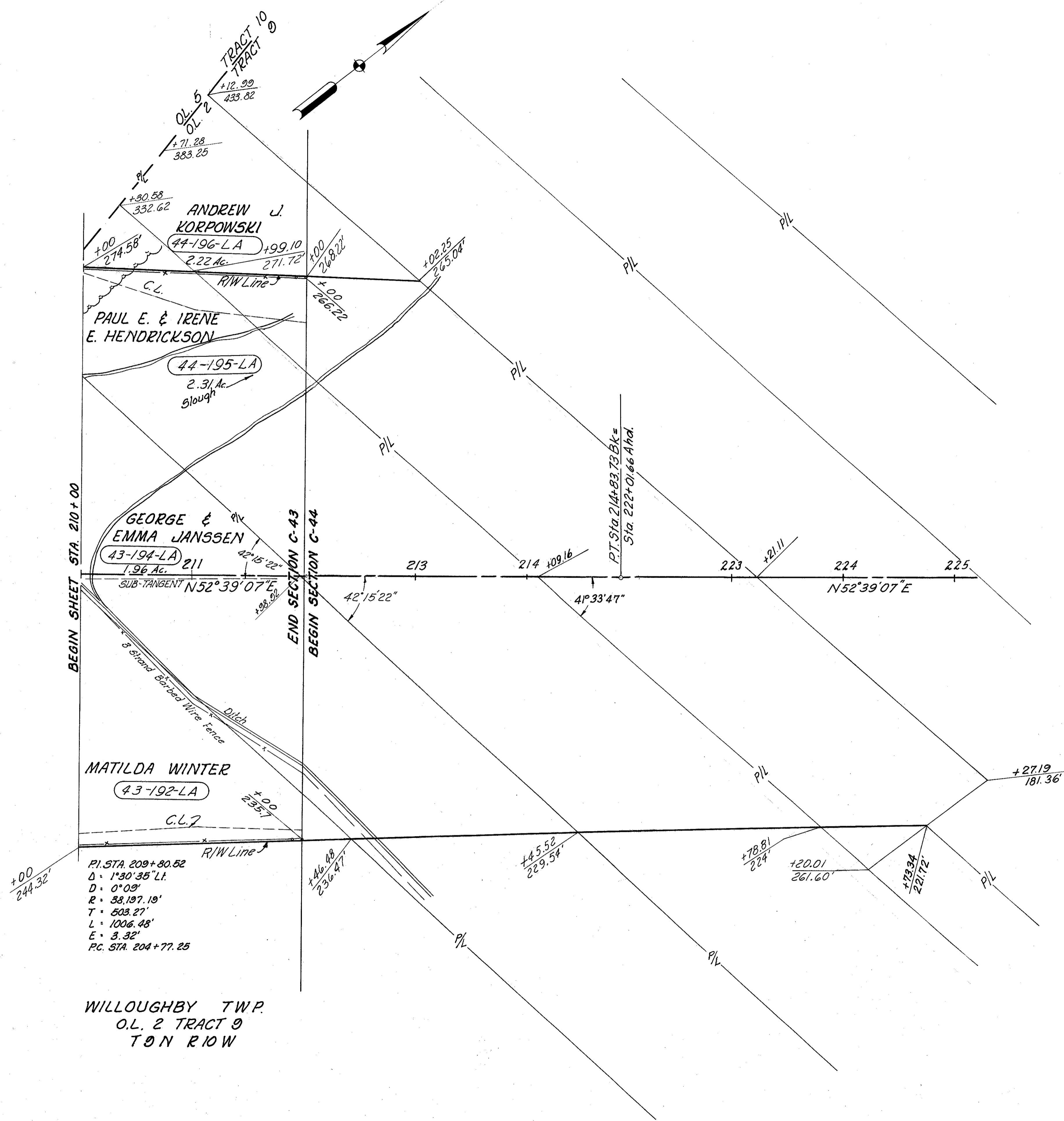


LAKE COUNTY  
LAK-1-2.16  
LIMITED ACCESS

R / W  
13 of 17



400 L.F. Type "D" Fence

MICHAEL BAKER JR., CONSULTING ENGINEERS ROCHESTER, PENNSYLVANIA					
DATE: 3-25-59	STATE OF OHIO DEPARTMENT OF HIGHWAYS RIGHT OF WAY PLANS STATE HIGHWAY NO. 1 C-43 STA. 210+00 TO STA. 212+00				
Designed	Drawn	Traced	Checked	Reviewed Date	Revised
J.P.	T.B.	K.A.	B.P.		

WILLOUGHBY TWP.  
O.L. 2 TRACT 9  
T O N R I O W