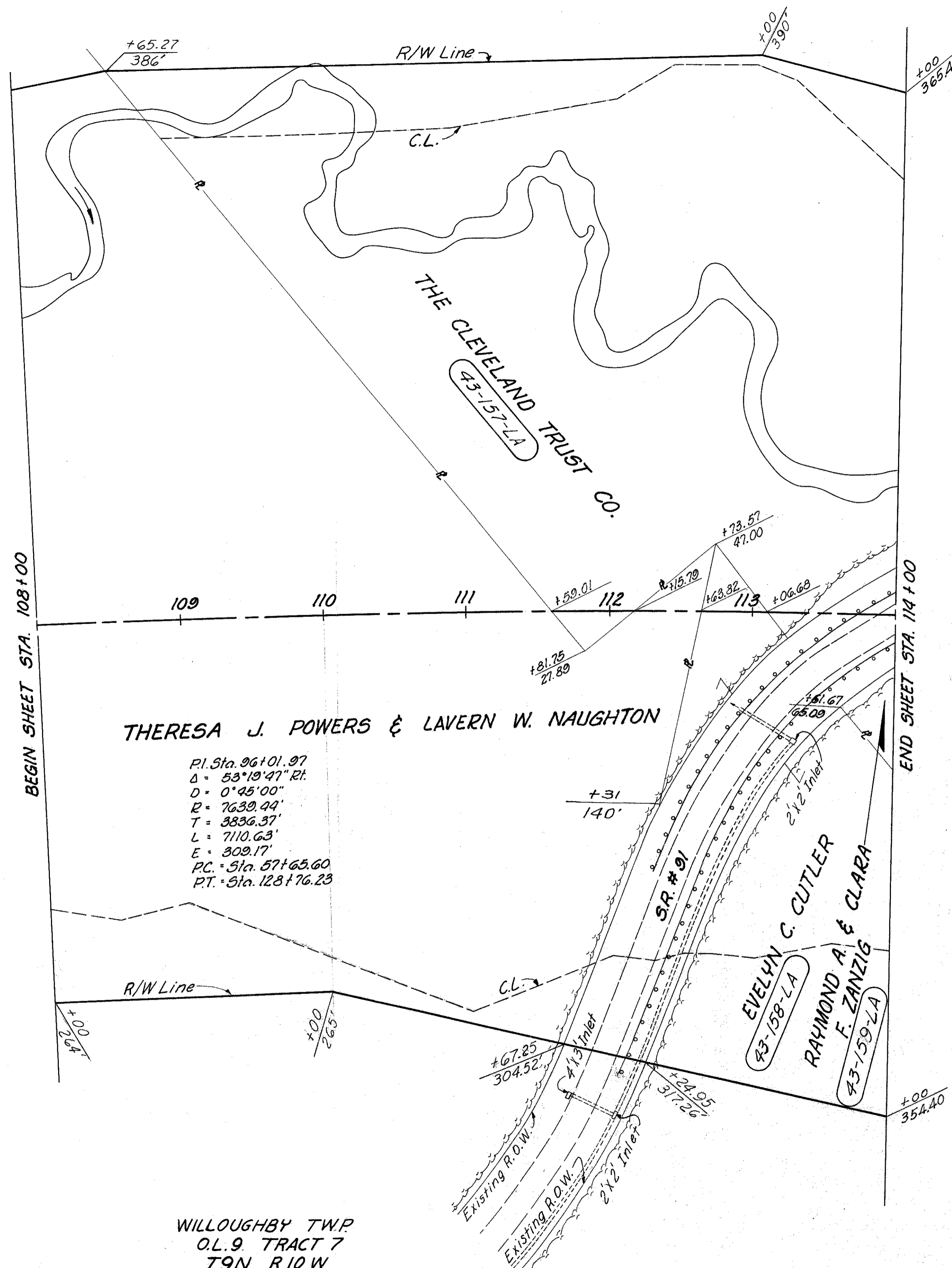
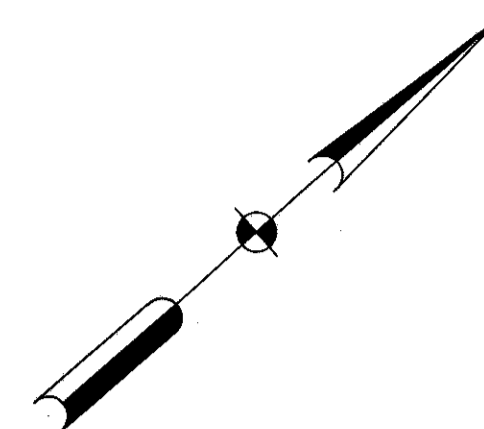


LAKE COUNTY
LAK-1-2.16
LIMITED ACCESS

R/W
3 of 17



BEGIN SHEET STA. 108+00

END SHEET STA. 114+00

WILLOUGHBY TWP.
O.L.9 TRACT 7
T9N R10W

MICHAEL BAKER JR., CONSULTING ENGINEERS ROCHESTER, PENNSYLVANIA					
DATE:	3-25-59				
STATE OF OHIO DEPARTMENT OF HIGHWAYS RIGHT OF WAY PLANS STATE HIGHWAY NO. 1 C-43 STA. 108+00 TO STA. 114+00					
Designed	Drawn	Traced	Checked	Reviewed	Date
J.P.	E.M.	A.L.H.	B.P.		