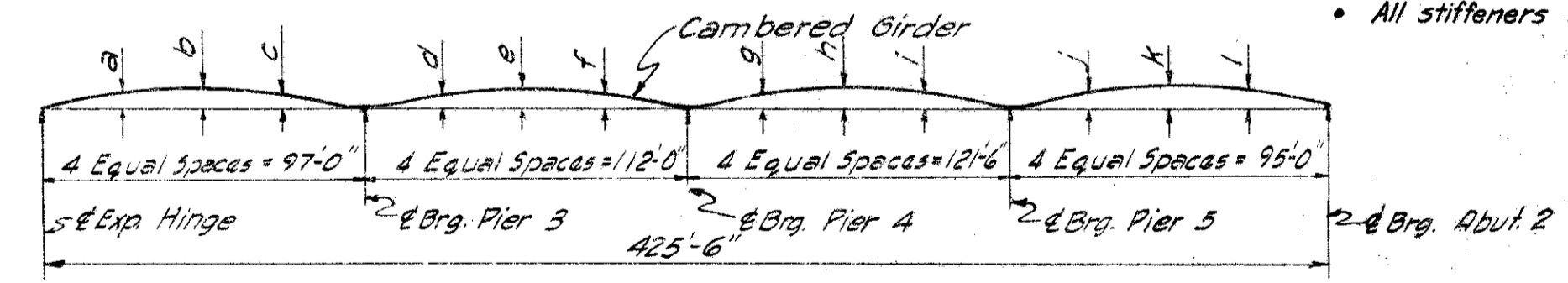


- NOTES**
- All dimensions are horizontal.
 - For details of expansion and fixed hinges and girder details for G-5 - G-8, see Sheet 294.
 - All rivets 3/8" φ.
 - All stiffeners shall be normal to girder.



DEFLECTION & CAMBER - GIRDERS G-9 - G-12

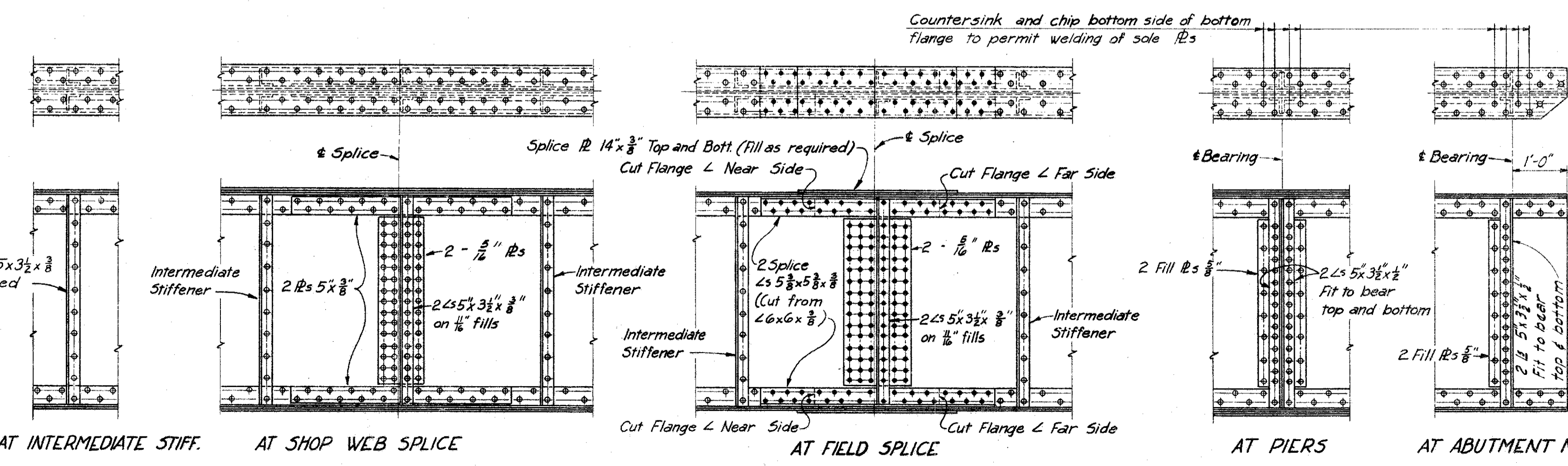
	G-9	G-10	G-11	G-12
Deflection Due to Wt. of Steel	1/8"	1/16"	1/16"	1/16"
Deflection Due to Remaining D.L. G10 & G11	1/16"	1/16"	1/16"	1/16"
do G-9 & G-12	1/16"	1/16"	1/16"	1/16"
Convexity required for Vertical Curve	1/16"	1/16"	1/16"	1/16"
do	1/16"	1/16"	1/16"	1/16"
do	1/16"	1/16"	1/16"	1/16"
Sum of Deflection & Convexity equals Required Camber	1/8"	1/16"	1/16"	1/16"

This sheet supersedes sheet 293. 3-24-60.

MICHAEL BAKER JR., CONSULTING ENGINEERS
ROCHESTER, PENNSYLVANIA

GIRDER ELEVATIONS & DETAILS
BRIDGE NO. LAK-I-0276
UNDER MAPLE GROVE ROAD

Designed	Drawn	Traced	Checked	Reviewed/Date	Revised
P.C.K.	C.R.H.	C.R.H.	H.C.M.	H.G.H. 8-22-58	3-22-60



TYPICAL DETAILS GIRDERS G-9-G-12