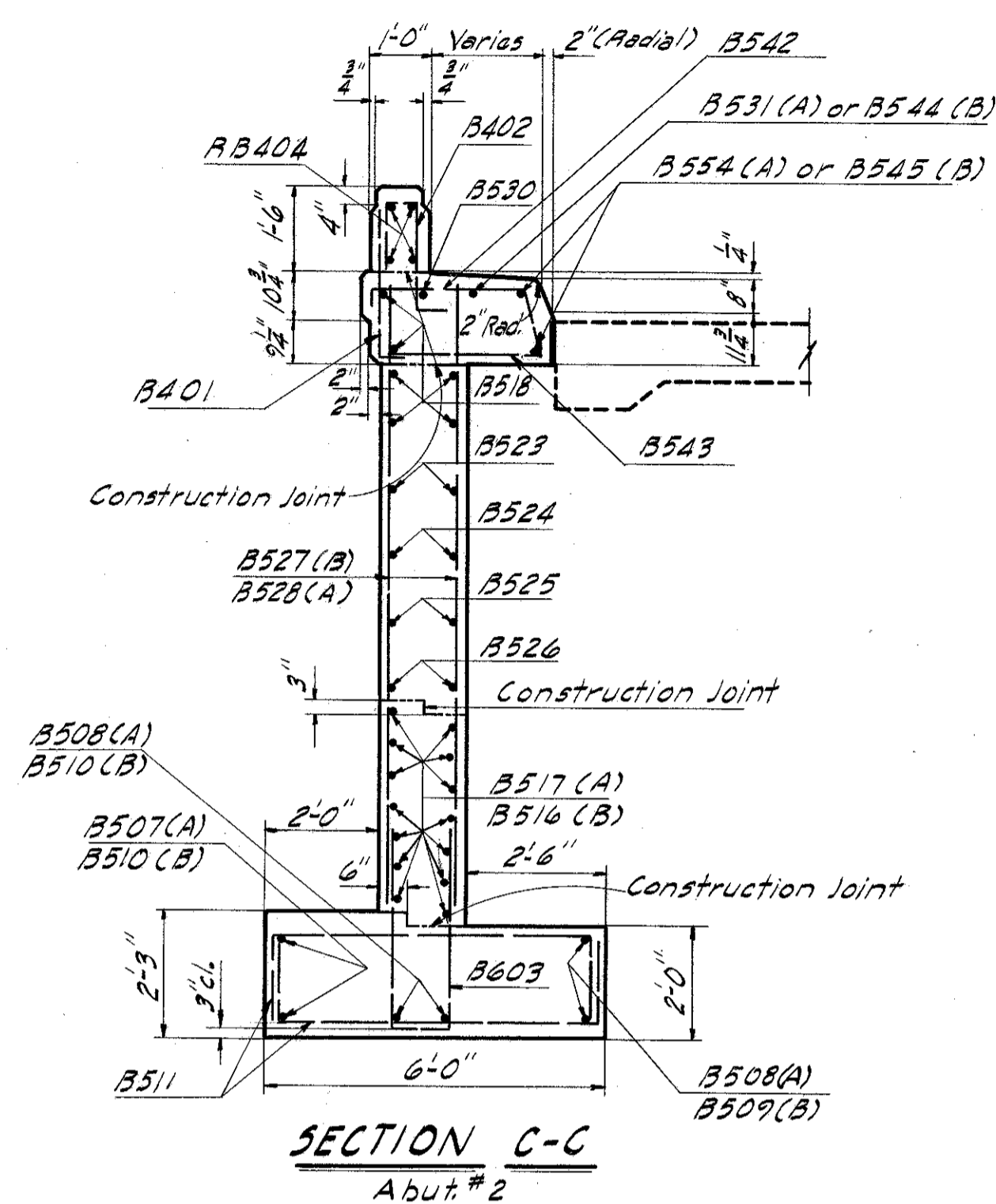


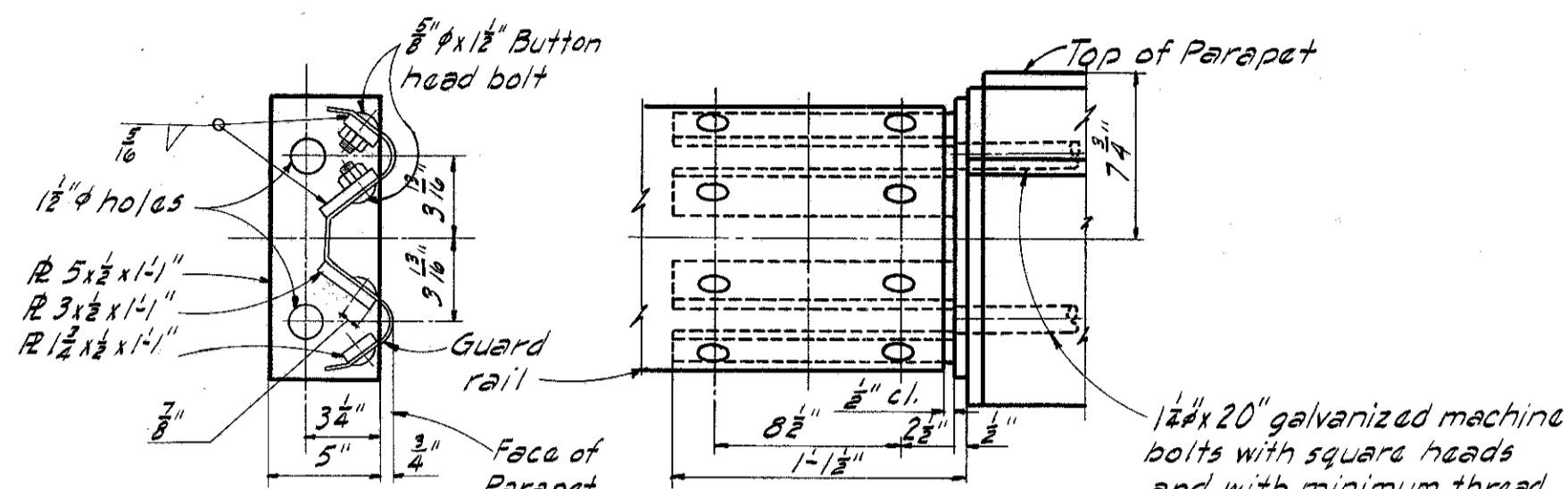
FED. RD. DIVISION	STATE	PROJECT	TYPE FUNDS
2	OHIO	I-1103 (19)	

289  
312

LAKE COUNTY  
LAK.-1-2.16



Note:  
(A) Indicates Wingwall "A"  
(B) Indicates Wingwall "B"  
E.F. Indicates Each Face  
If "A" or "B" is not indicated,  
bar numbers and dimension  
are for each Wingwall.



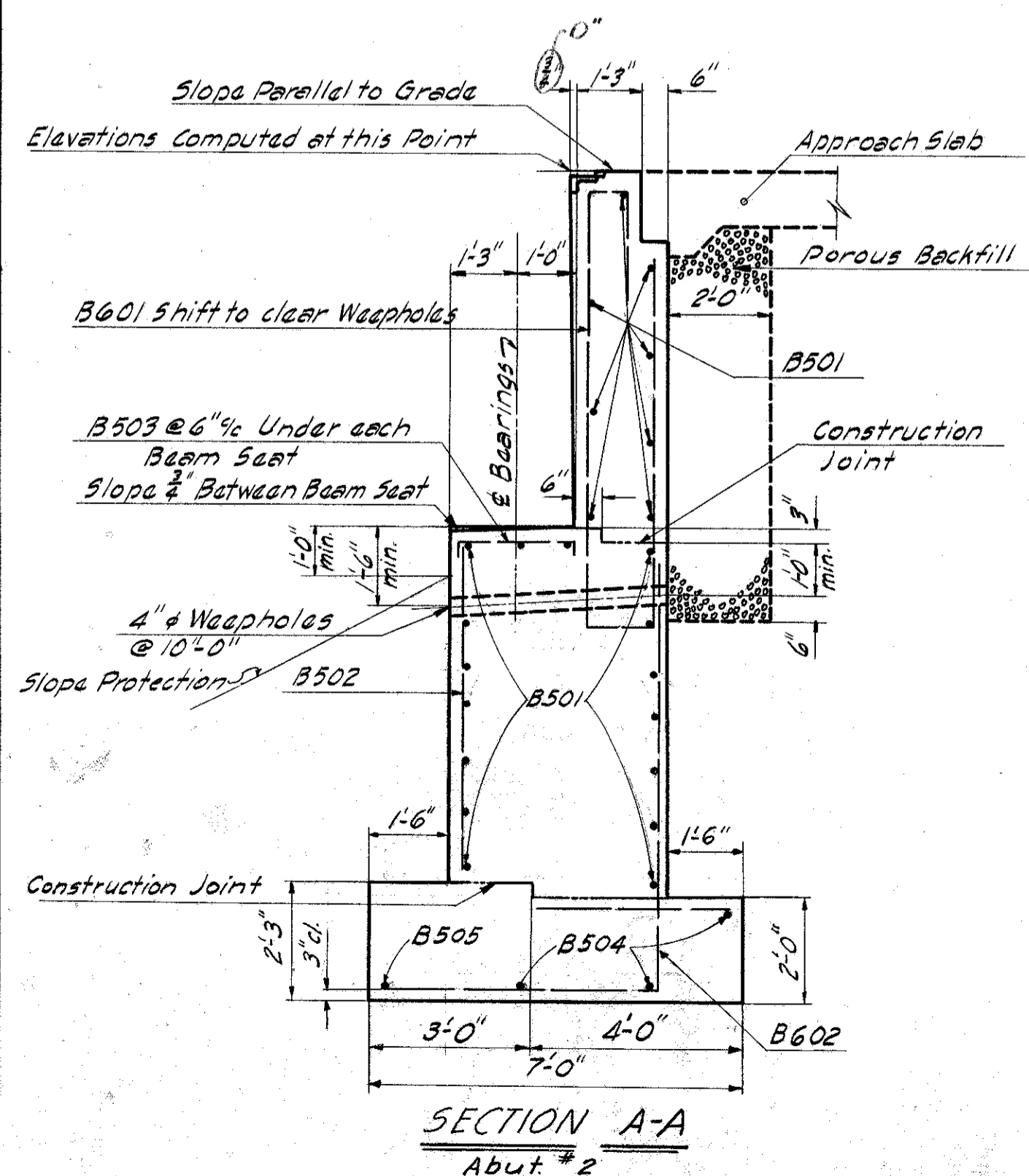
Guard rail and connection  
assembly (above) shall be  
galvanized after welding.

**GUARD RAIL DETAIL**

As Seen From Pavement Side

**NOTES**

- Porous Backfill 2 feet thick full length of Abutment shall extend up to the underside of approach slab.
- All abutment concrete shall be Class "E".
- Guard rail and connection to be included in cost of Bridge railing.
- Design Foundation pressure is 2 1/2 Tons per sq. ft.
- Concrete above bridge seat construction joint shall not be placed until after the steelwork is erected, but shall be placed before placing the deck slab.
- The footing for Abutment 2 shall extend a minimum of 3' into shale or to the elevation shown, whichever is lower.



MICHAEL BAKER JR., CONSULTING ENGINEERS ROCHESTER, PENNSYLVANIA						
<b>ABUTMENT DETAILS</b>						
BRIDGE NO. LAK-1-0276						
UNDER MAPLE GROVE ROAD						
LAKE COUNTY					STA. 145+98.94	
Designed	Drawn	Traced	Checked	Reviewed-Date	Revised	
C.V.R.	C.V.P.	A.C.M.	G.S.W.	H.G.H. 8-22-58	3-24-60	