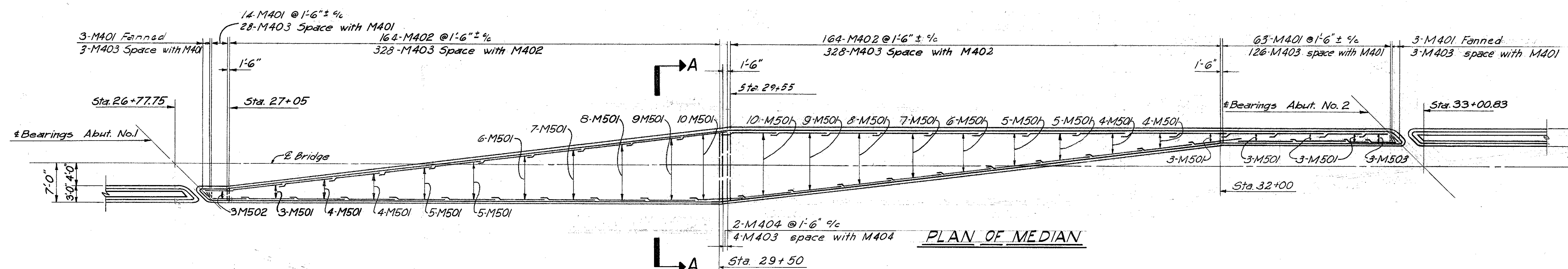


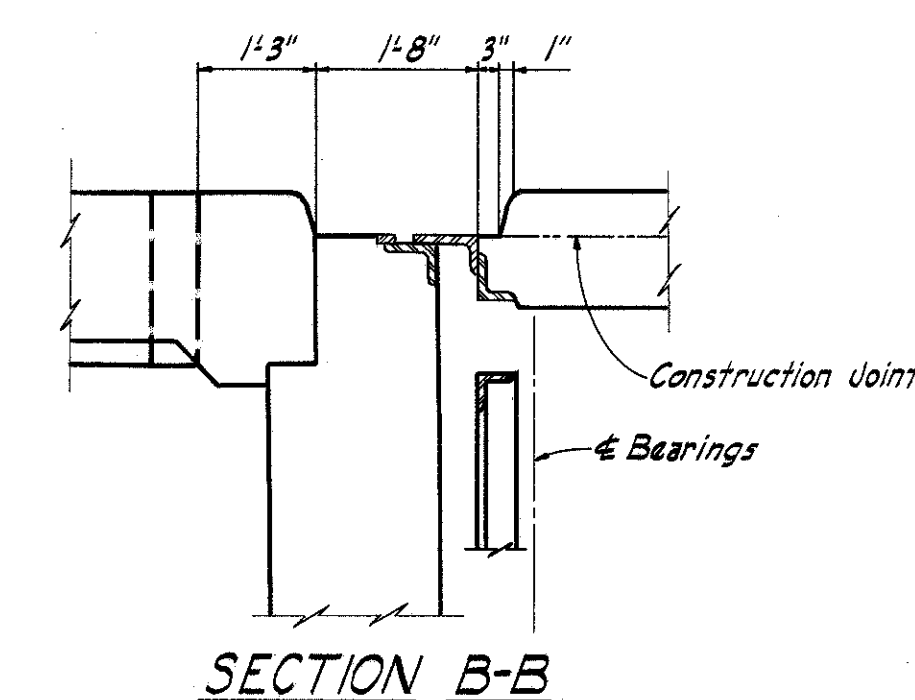
FED. RD. DIVISION	STATE	PROJECT	TYPE FUNDS
2	OHIO	I-1103(19)	

283  
312

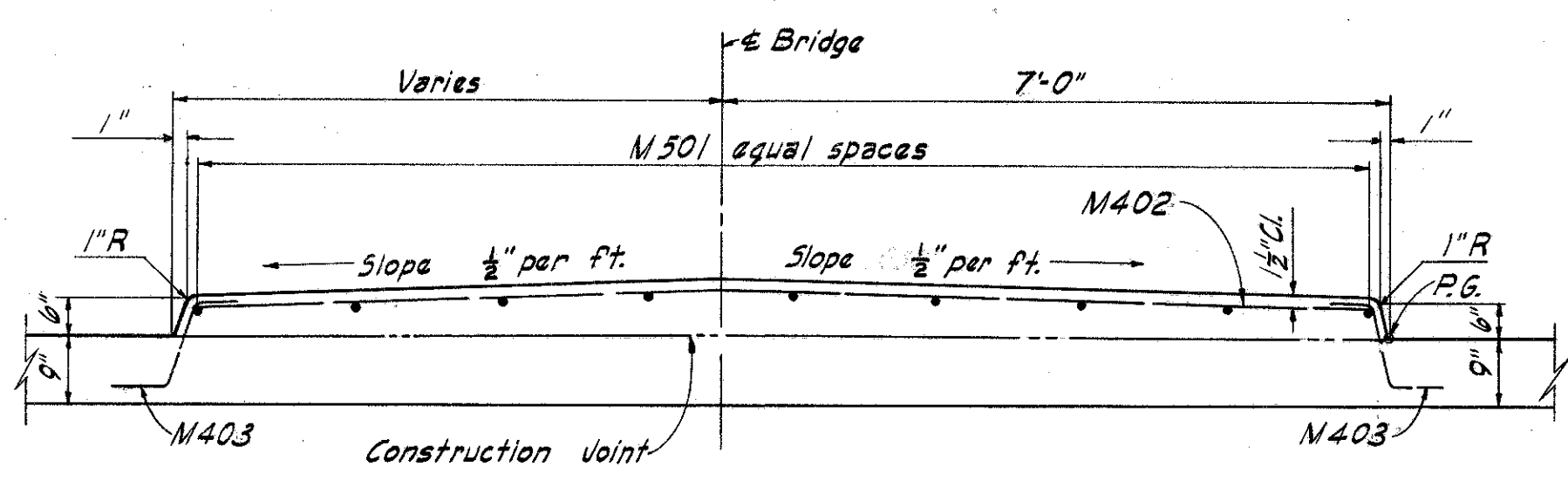
LAKE COUNTY  
LAK.-I-2.16



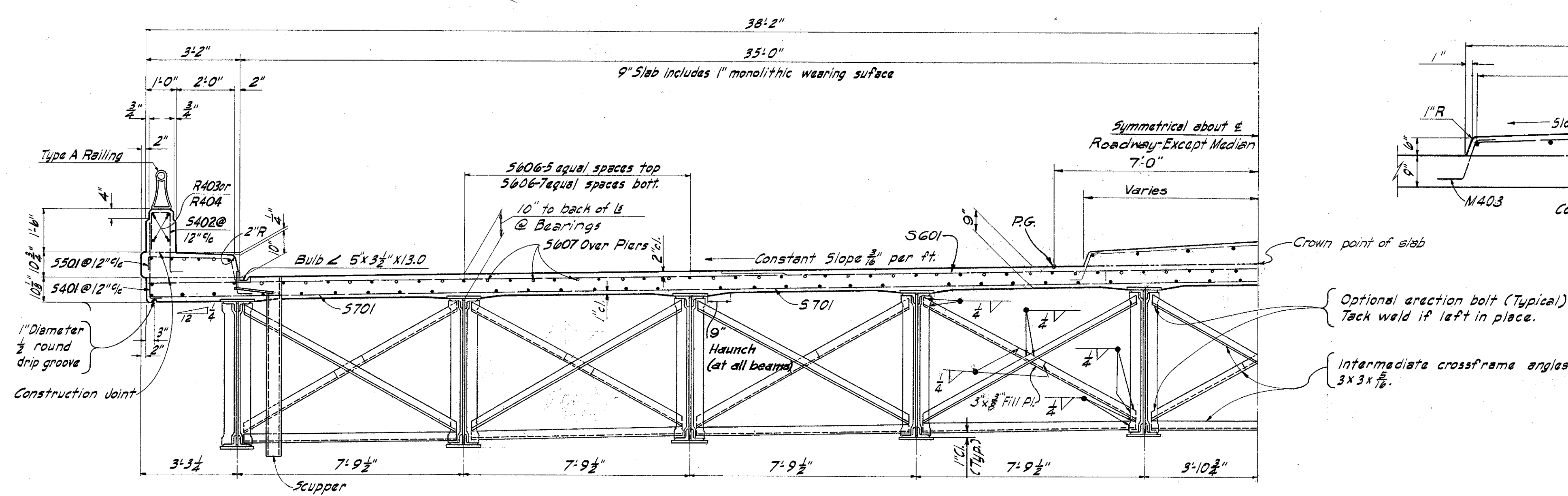
PLAN OF MEDIAN



SECTION B-B



SECTION A-A



TYPICAL CROSS SECTION

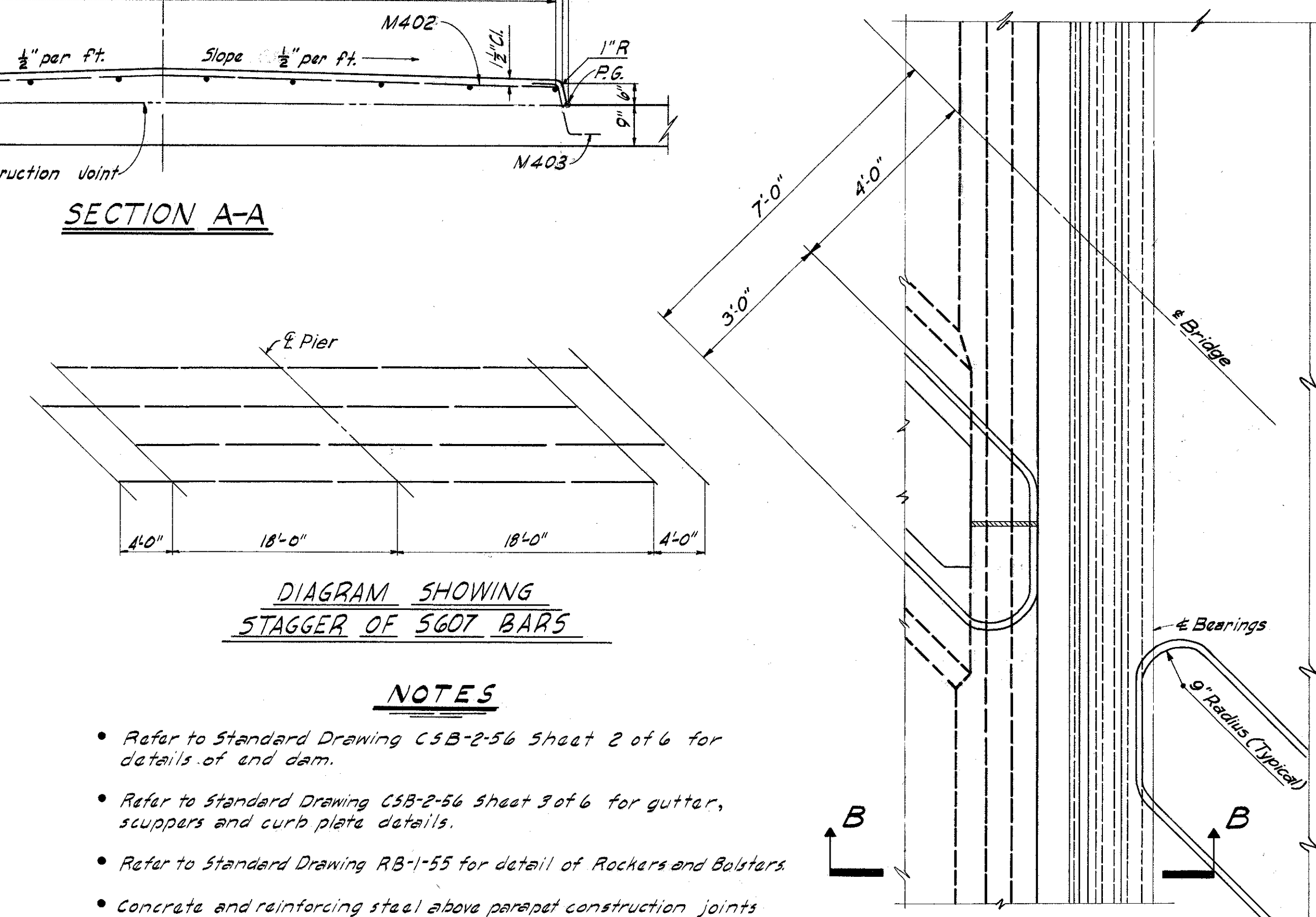
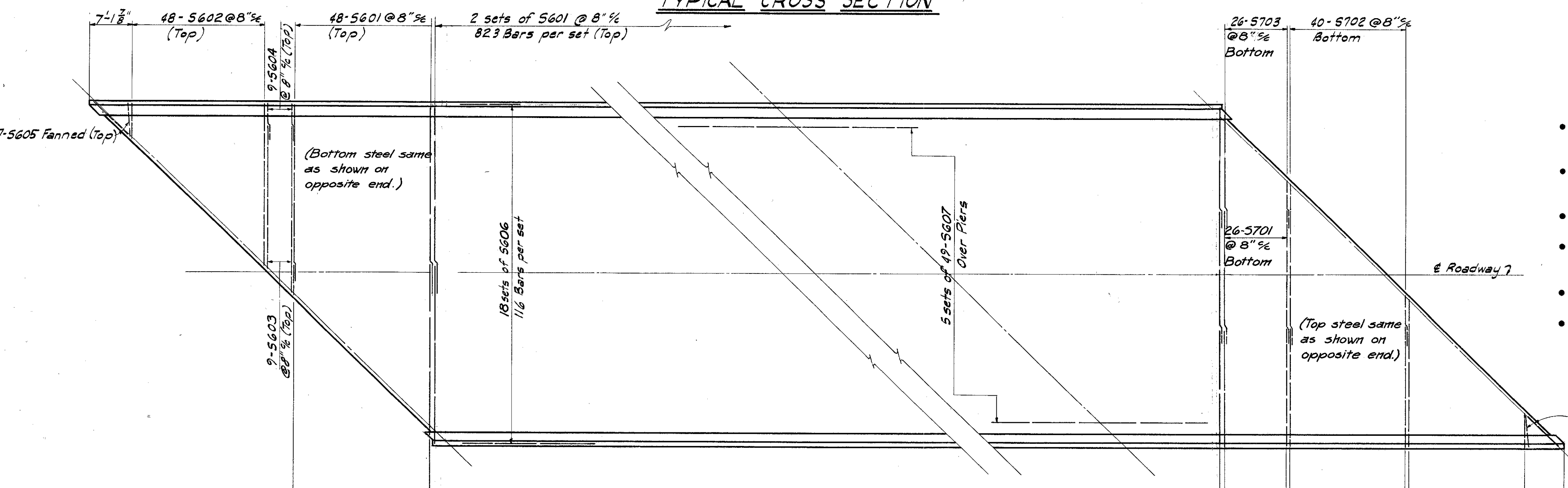


DIAGRAM SHOWING STAGGER OF 5607 BARS

NOTES

- Refer to Standard Drawing CSB-2-56 Sheet 2 of 6 for details of end dam.
- Refer to Standard Drawing CSB-2-56 Sheet 3 of 6 for gutter, scuppers and curb plate details.
- Refer to Standard Drawing RB-1-55 for detail of Rockers and Bolsters.
- Concrete and reinforcing steel above parapet construction joints included with railing for payment.
- Concrete shall be Class "C".
- Joints in End Dam: Joints in the end dam attached to the superstructure shall be welded. The portion attached to the backwall shall be placed in segments which shall be closely butted, but shall not be welded.



DECK PLAN

**DECK PLACING PROCEDURE**  
In placing the deck concrete, construction joints will be permitted, parallel to the transverse reinforcing steel and near the middle of any span. Because of the flow of curing water from the surface of previously-placed deck concrete, the sequence of pours shall be upgraded, starting at the lowest end.

PART PLAN OF MEDIAN AT ABUTMENT NO. 1  
Similar at Abutment No. 2

MICHAEL BAKER JR., CONSULTING ENGINEERS  
ROCHESTER, PENNSYLVANIA

**SUPERSTRUCTURE  
MEDIAN & DECK DETAILS**  
BRIDGE NO. LAK-I-0226  
UNDER STATE ROUTE NO. 91

LAKE COUNTY STA. 121+21.56

Designed	Drawn	Traced	Checked	Reviewed-Date	Revised
E.E.W.	B.C.W.	E.F.T. C.A.H.	D.E.B.	H.G.H. 8-22-58	