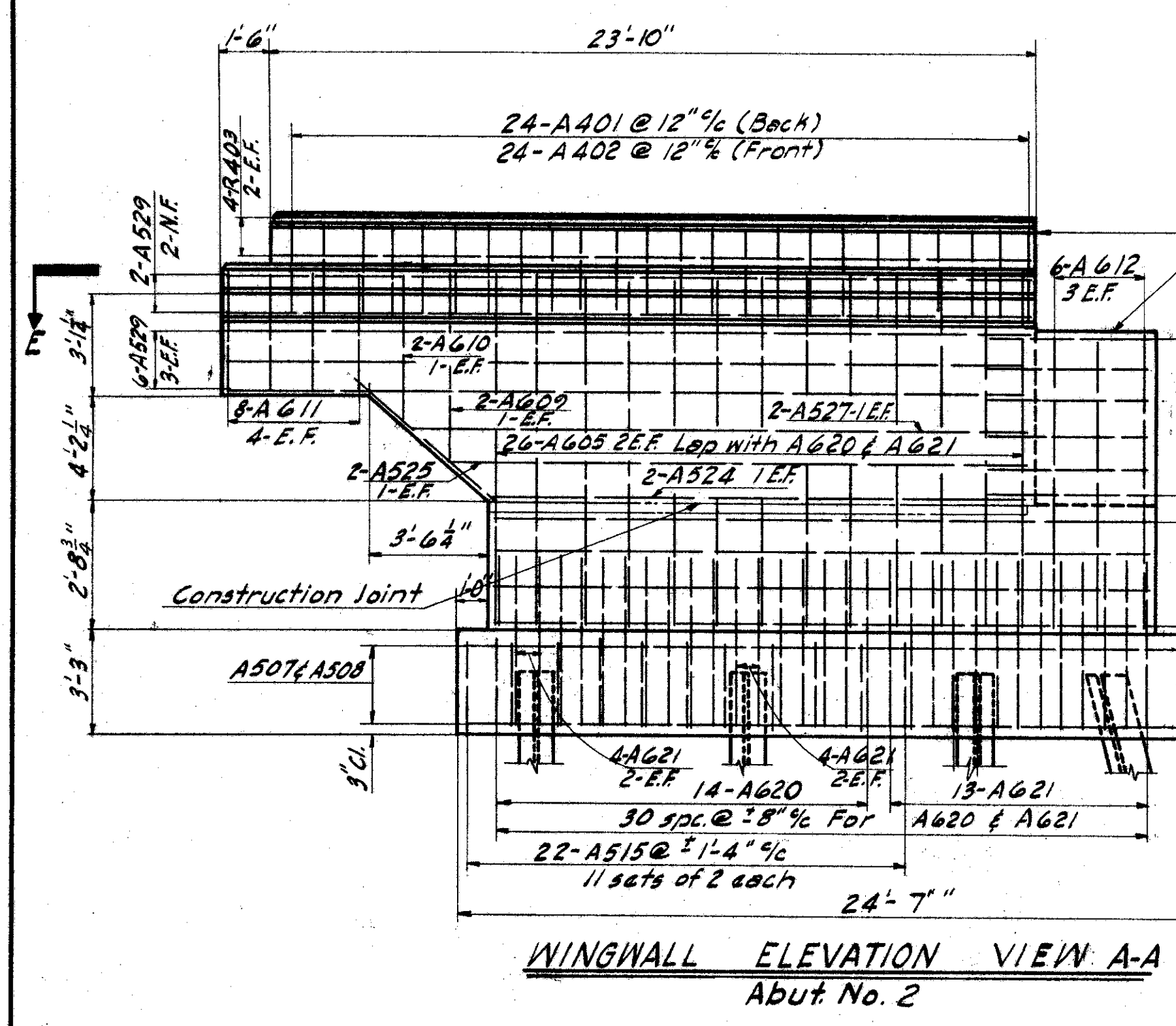
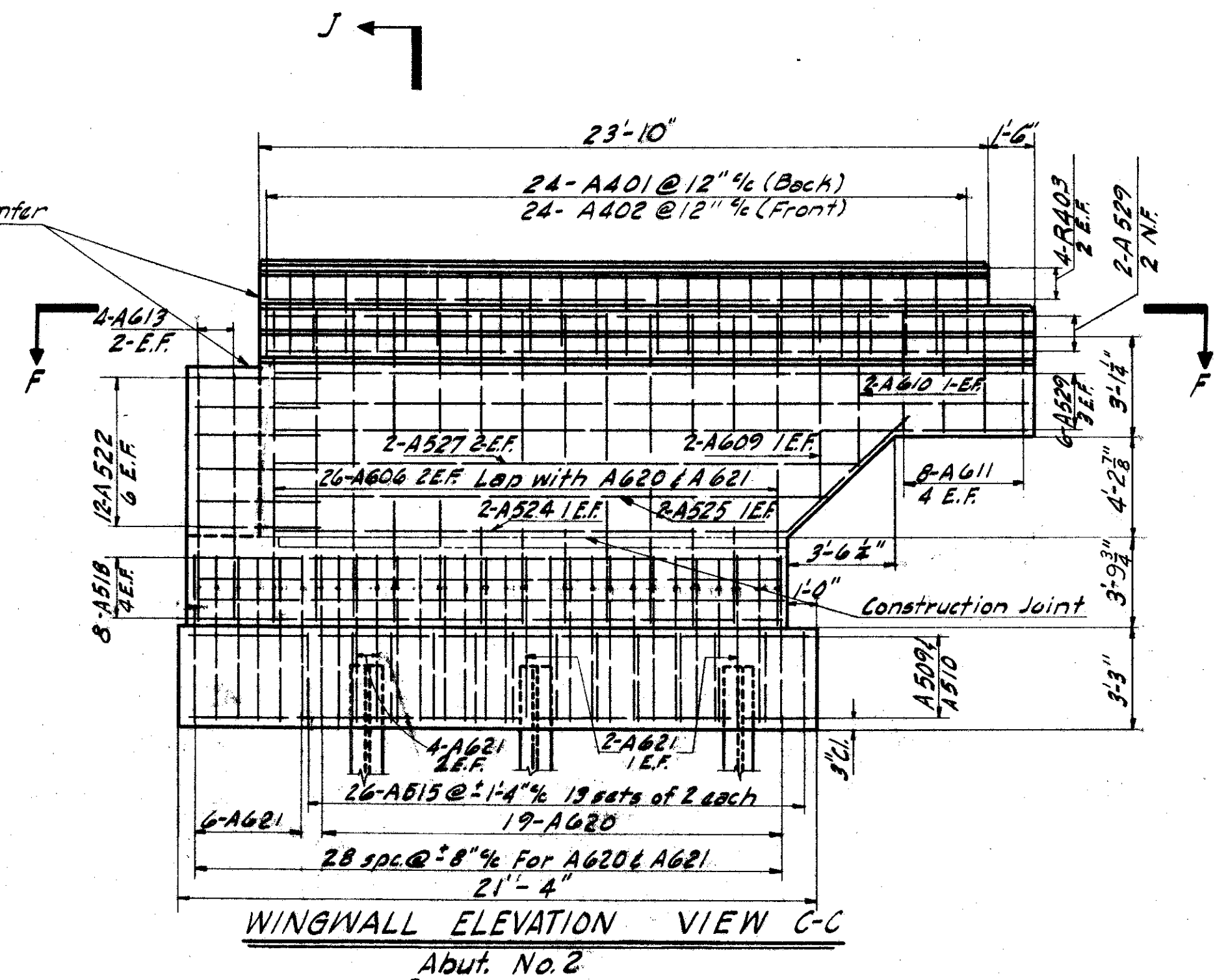


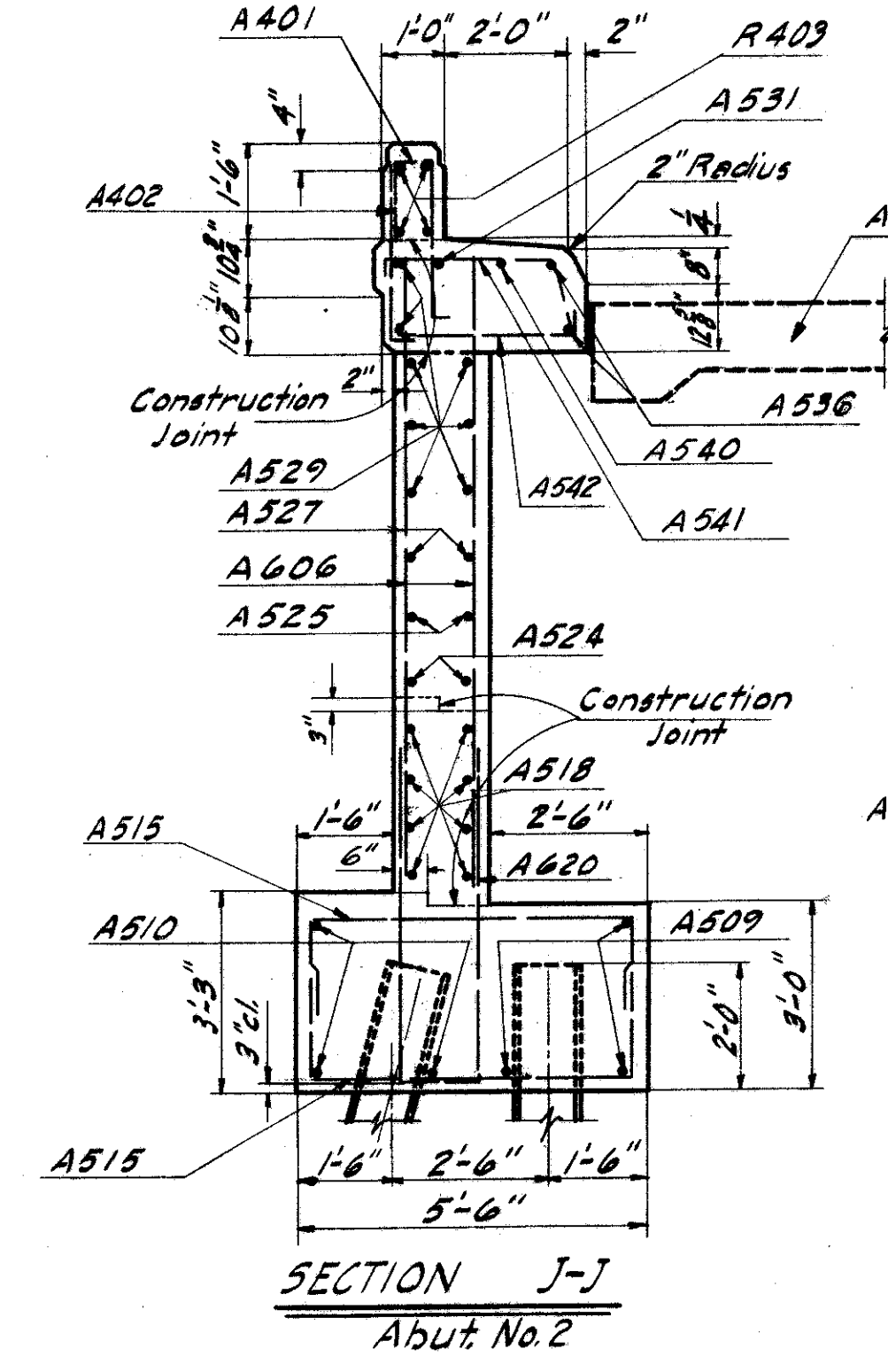
LAKE COUNTY
LAK.-I-2.16



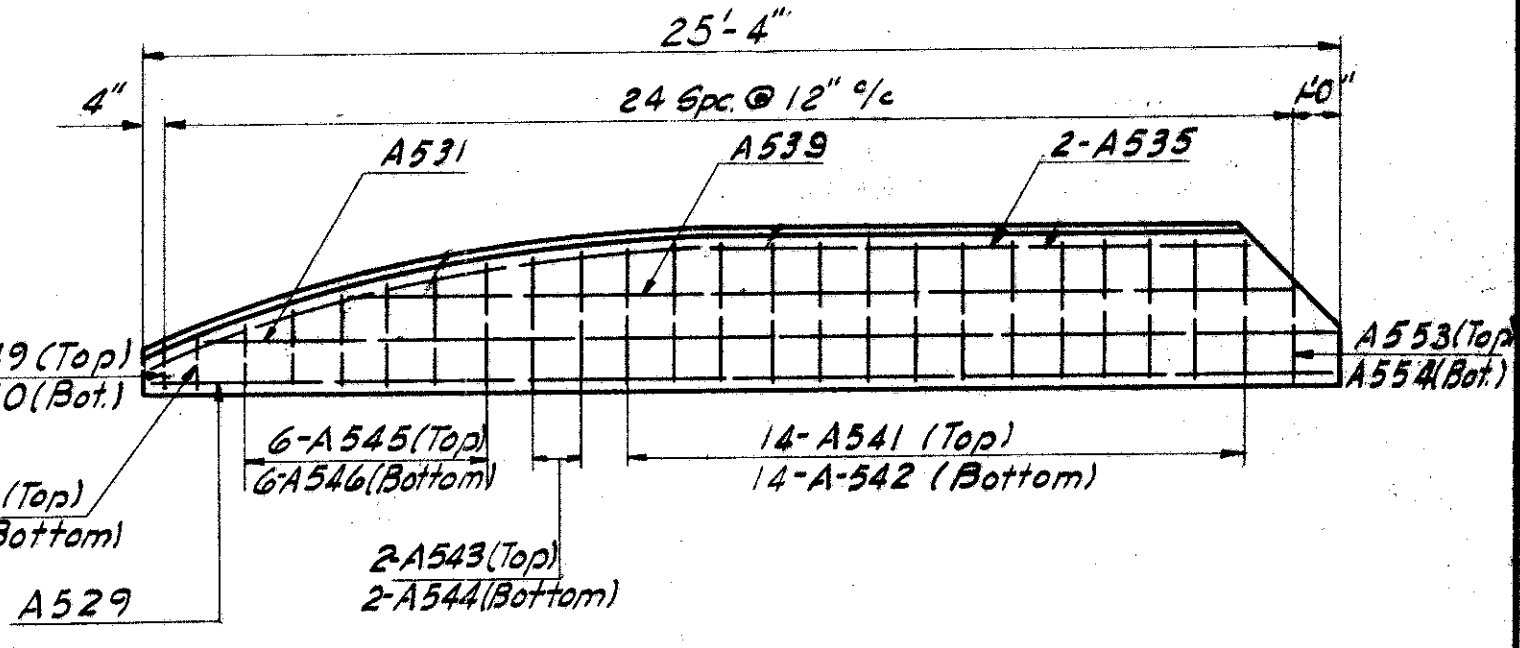
WINGWALL ELEVATION VIEW A-A
Abut. No. 2



WINGWALL ELEVATION VIEW C-C
Abut. No. 2

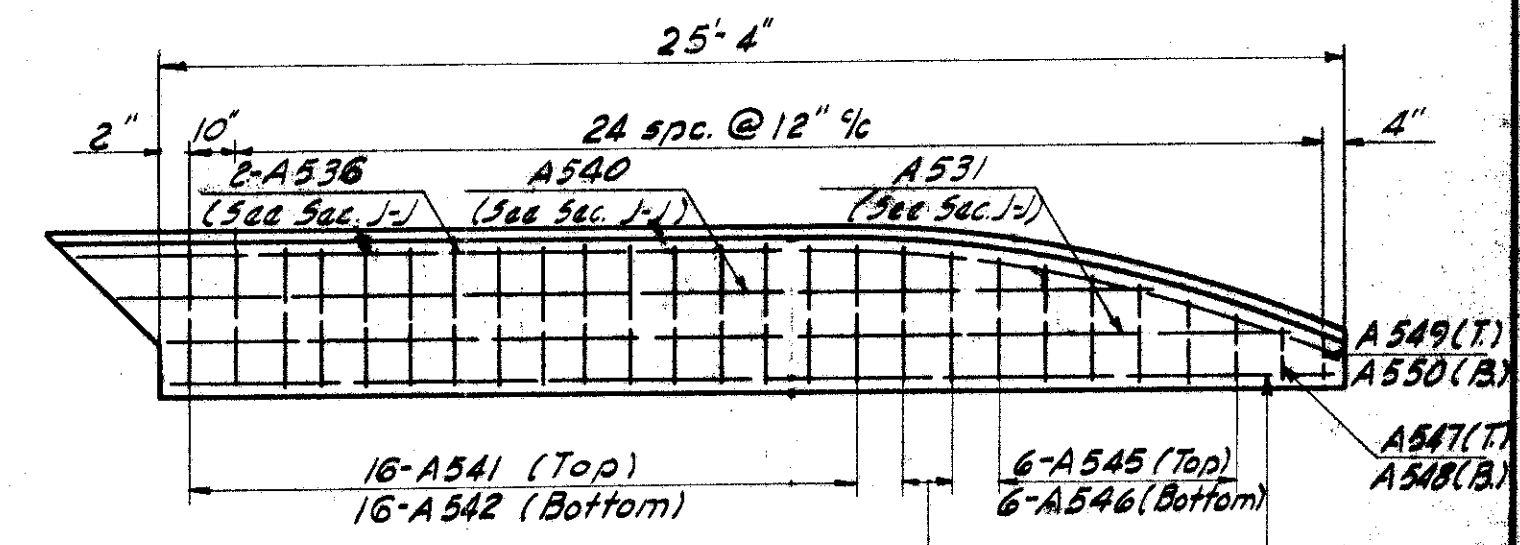


SECTION J-J
Abut. No. 2

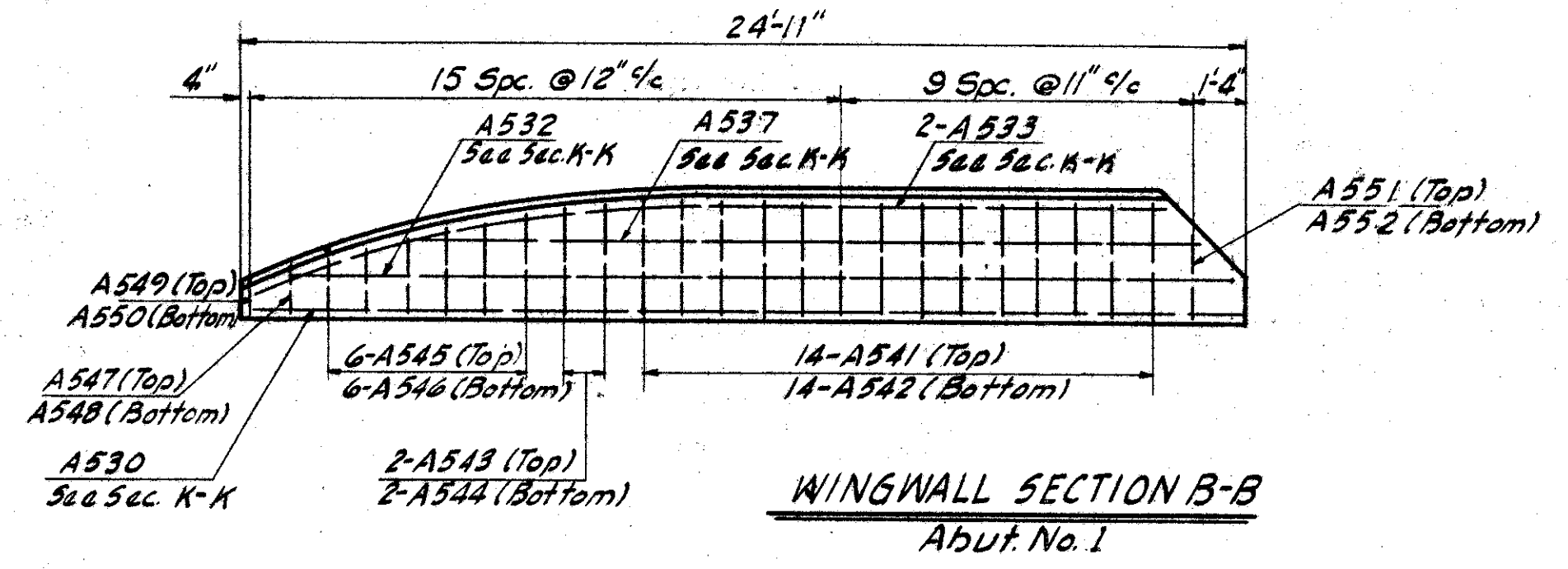


WINGWALL SECTION E-E
Abut. No. 2

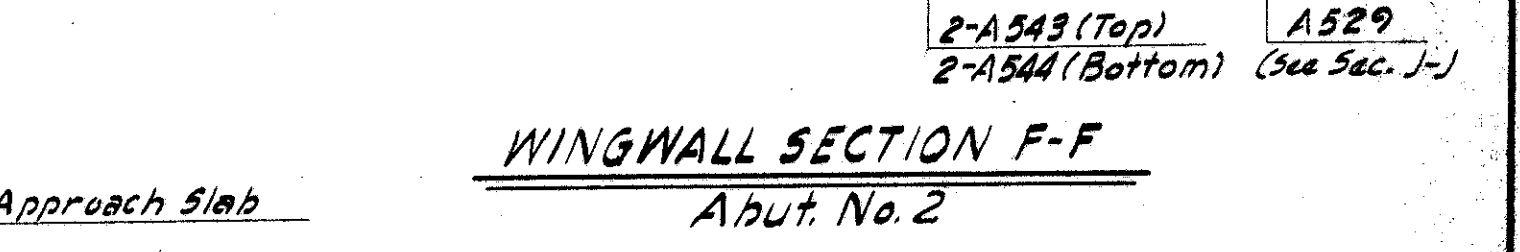
NOTE:
E.F. Indicates Each Face
N.F. Indicates Near Face



WINGWALL SECTION D-D
Abut. No. 1



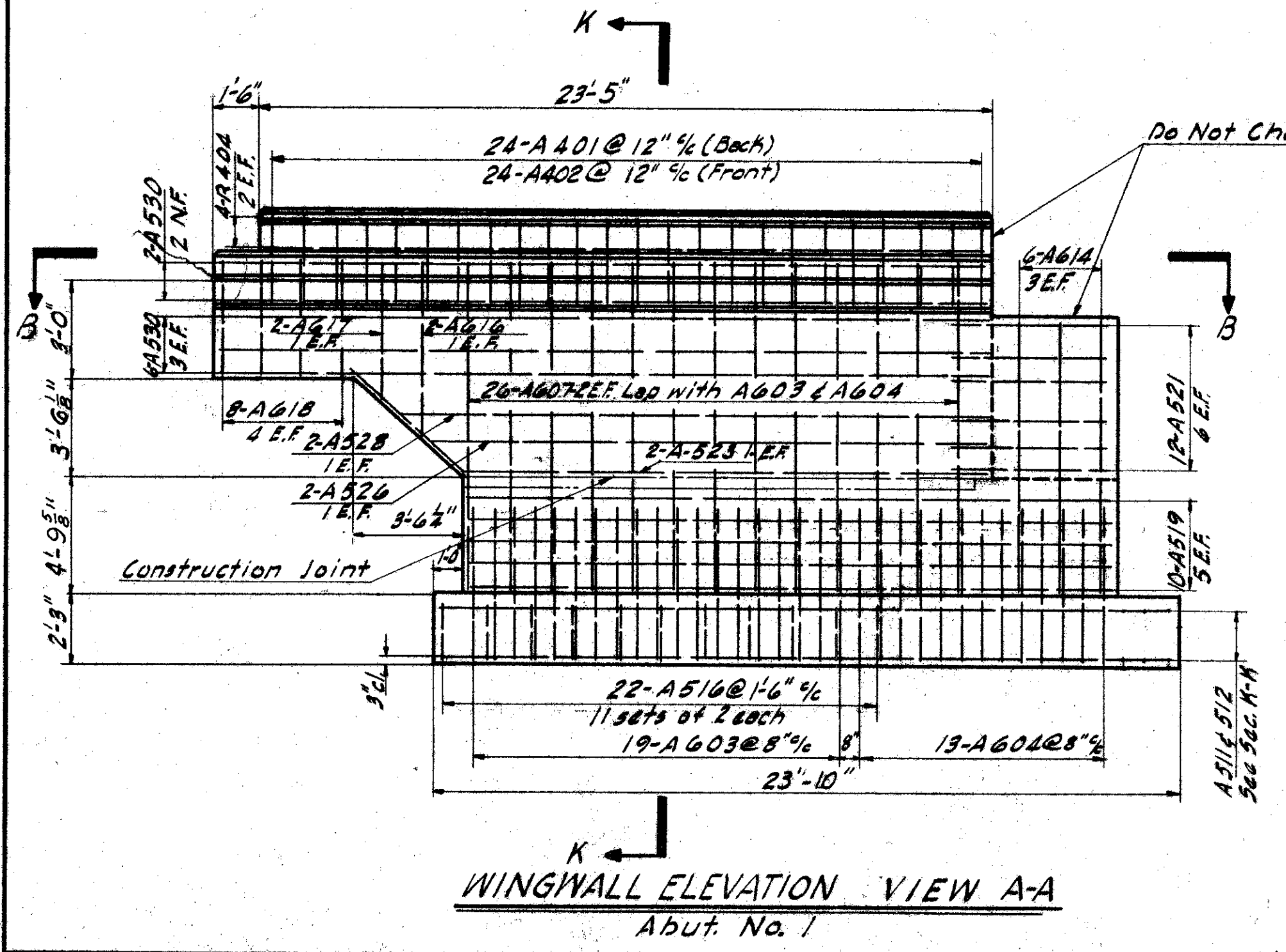
WINGWALL SECTION B-B
Abut. No. 1



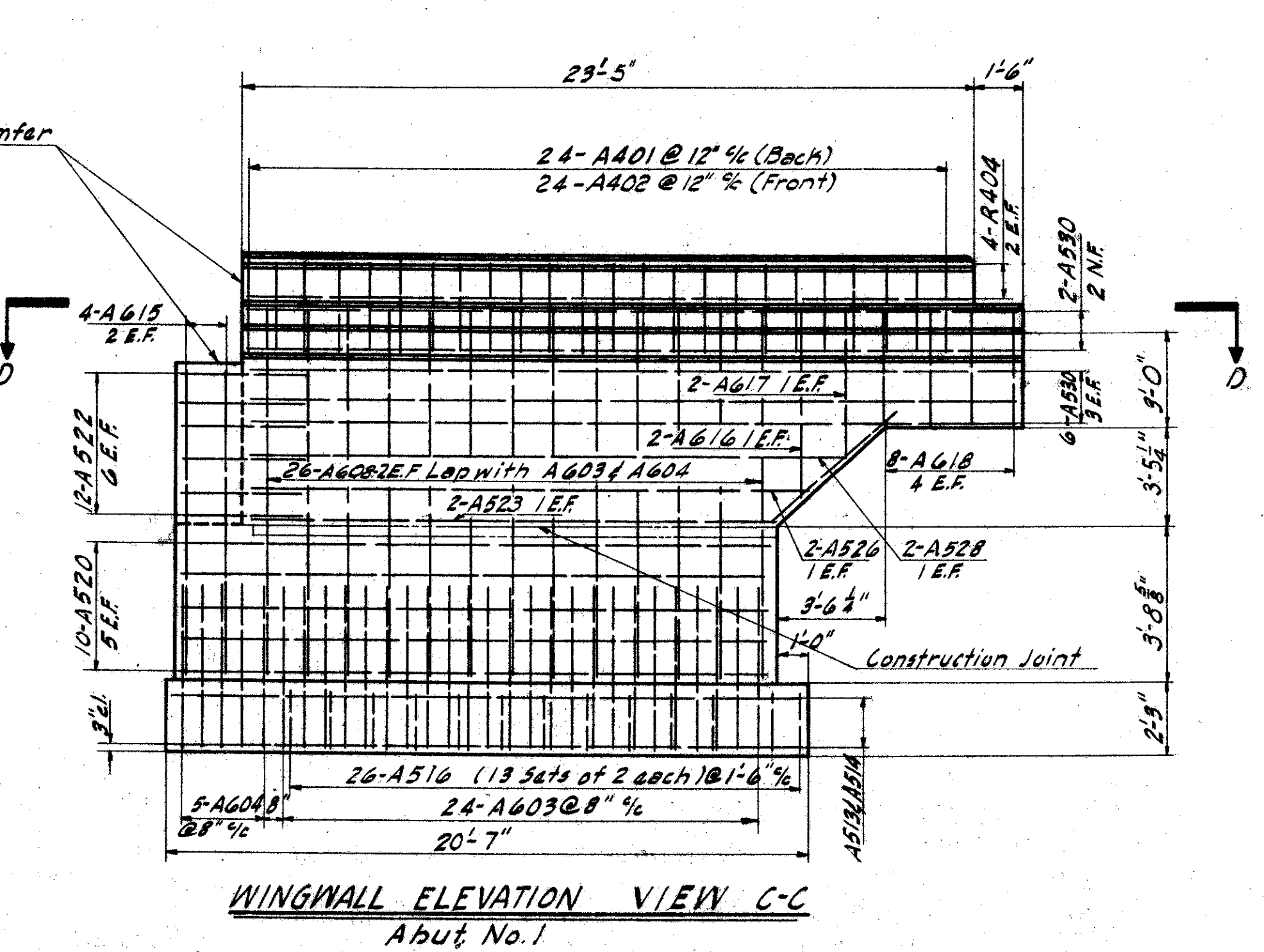
WINGWALL SECTION F-F
Abut. No. 2

- NOTES**
- All piles to be 12 B.P.53 and shall be driven to a bearing capacity as given in the general notes on the "General Plan & Elevation".
 - All abutment concrete shall be Class "E".
 - Porous backfill 2 feet thick full length of abutment shall extend up to the underside of the approach slab.
 - Guard rail and connection to be included in cost of bridge railing.
 - Clearance of reinforcing steel from face of concrete shall be 2" unless otherwise shown.
 - Concrete above bridge seat construction joint shall not be placed until after the steel work is erected, but before placing the deck slab.
 - Steel and Dam shall be used as a template for the top of the backwall.

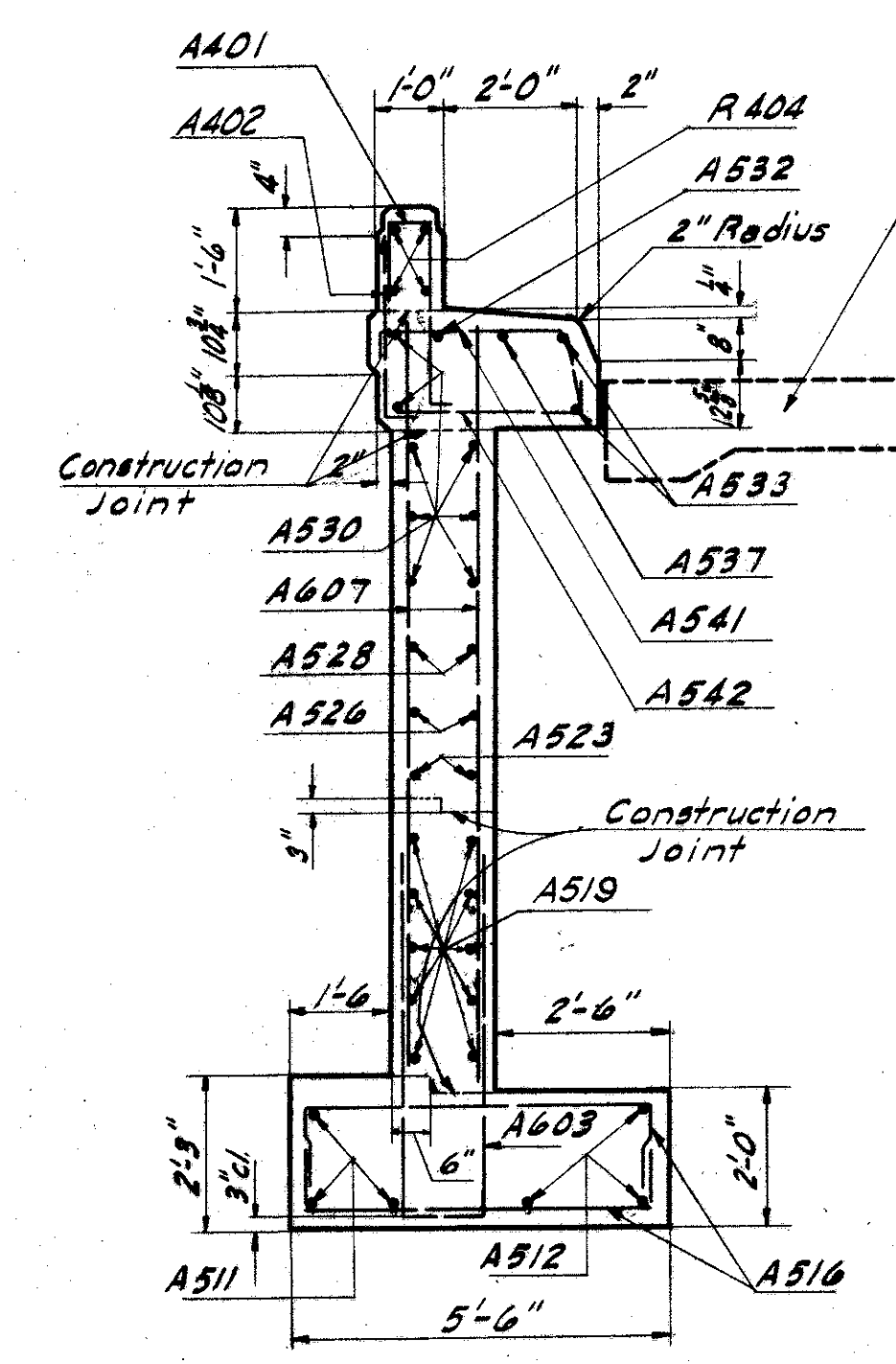
This sheet supersedes sheet 279. 3-24-60.



WINGWALL ELEVATION VIEW A-A
Abut. No. 1



WINGWALL ELEVATION VIEW C-C
Abut. No. 1



SECTION K-K
Abut. No. 1

MICHAEL BAKER JR., CONSULTING ENGINEERS
ROCHESTER, PENNSYLVANIA

ABUTMENTS
WINGWALL ELEVATION & SECTIONS
BRIDGE NO. LAK-I-0226
UNDER STATE ROUTE NO. 91

LAKE COUNTY	STA. 121+21.56
Designed	Checked
Drawn	Reviewed-Date
Traced	Revised
R.K.	R.K.
A.C.M.	G.S.W.
H.S.H.	8-22-59
	8-22-60