

LAKE COUNTY
LAK-1-2.16

18" Sod

2:1 Slope

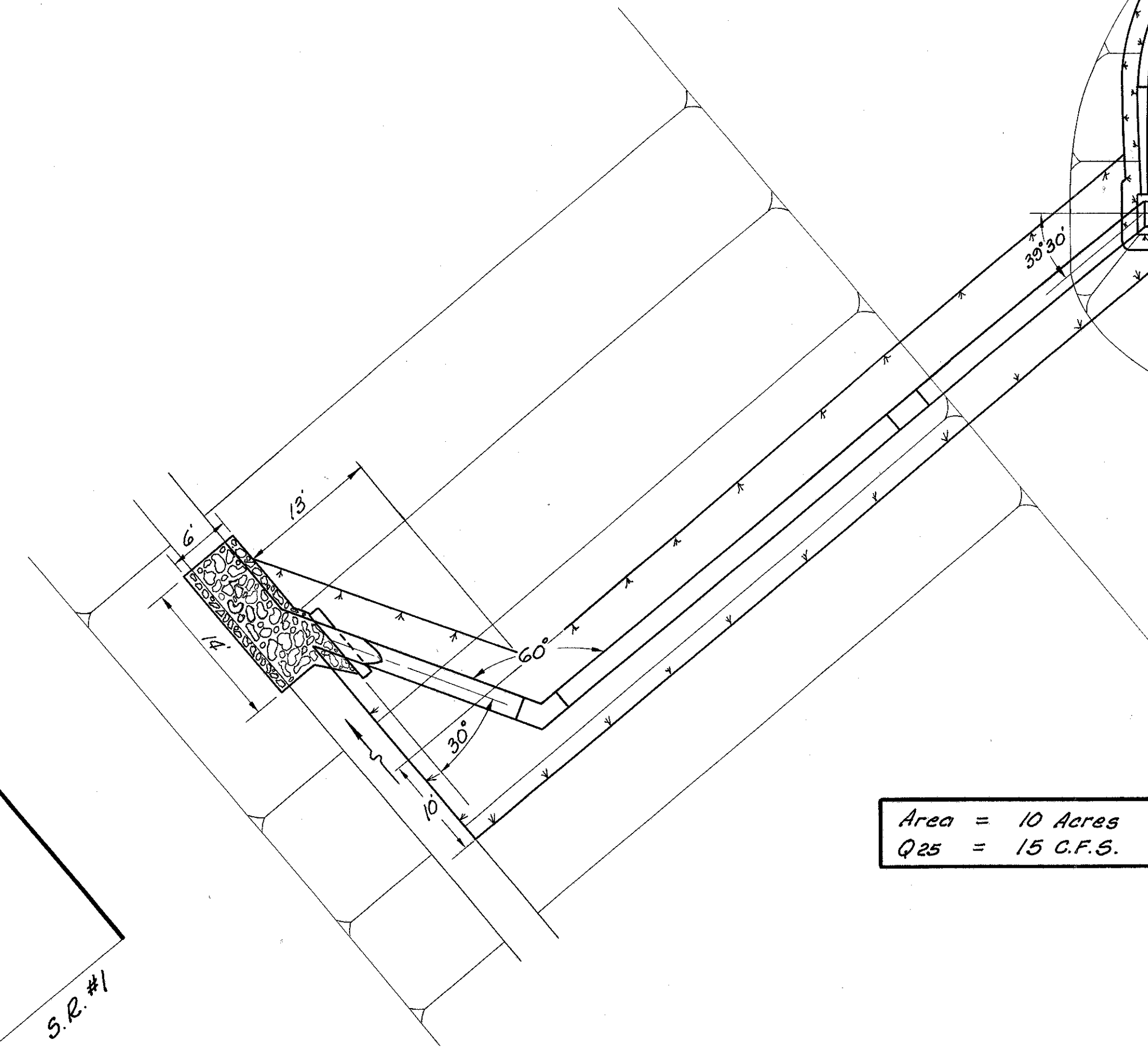
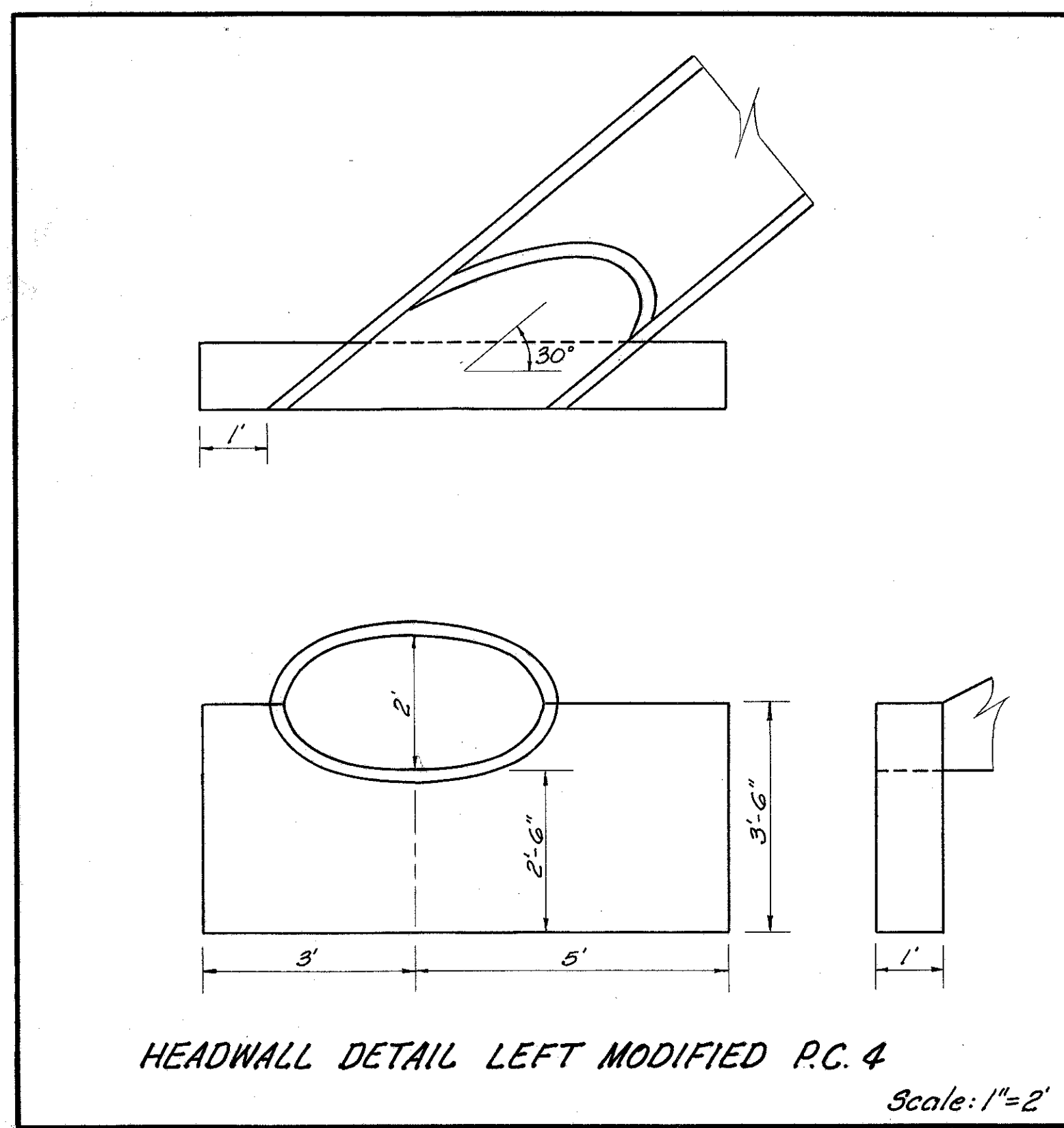
Paved Gutter Type I Modified
Modify to Conform to Ditch

Maple Grove Road
& Survey

Sta. 24+30

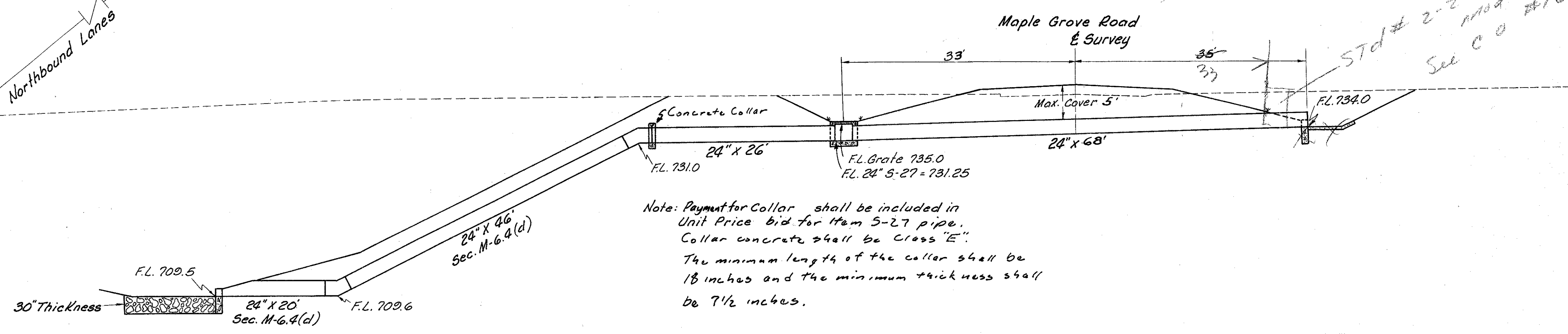
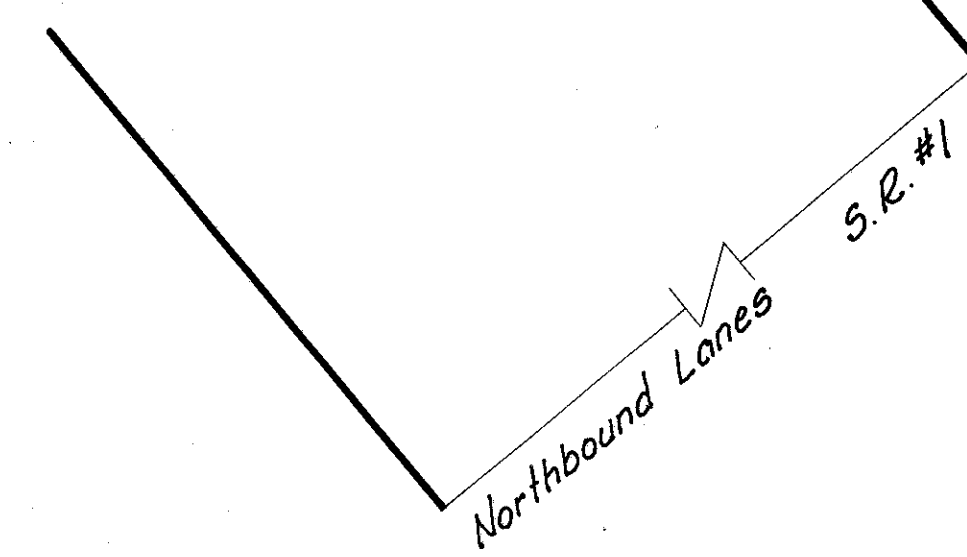
No. 2-2-A C.B. Mod.

0° Skew



Area = 10 Acres
Q25 = 15 C.F.S.

Headwater = 2.20'
Outlet Velocity = 5.2 F.P.S.



Note: Payment for Collar shall be included in Unit Price bid for Item 5-27 pipe. Collar concrete shall be Class "E". The minimum length of the collar shall be 18 inches and the minimum thickness shall be 7 1/2 inches.

ESTIMATED QUANTITIES

E-2	Excavation for Structures	93	Cu. Yds.
S-1	Concrete for Structures Class "C"	1.31	Cu. Yds.
S-27	24" Pipe for Roadway Culverts Sec. M-6.4(d)	66	Lin. Ft.
I-5	Pipe Specials 24" X 25° Bend	1	Each
I-5	Pipe Specials 24" X 60° Bend	1	Each
I-8	Modified No. 2-2-A C.B. W/Paved Entrance	1	Each
I-10	Dumped Rock Channel Protection	8	Cu. Yds.
I-14	Paved Gutter Type I	18	Lin. Ft.
L-10	Sodding	48	Sq. Yds.
S-27	24" Pipe for Roadway Culverts Sec. M-6.6(b) or M-6.8(b)	94	Lin. Ft.

CULVERT DATA

TYPE: Pipe Culvert 5-27, 66' Sec. M-6.4(d) & 94' Sec. M-6.6(b) or Sec. 6.8(b) Type P.C.4 Hdw'ls.
SIZE: 24" X 160'

Scale: 1"=10'

MICHAEL BAKER JR., CONSULTING ENGINEERS
ROCHESTER, PENNSYLVANIA

STATE OF OHIO
DEPARTMENT OF HIGHWAYS
STATE HIGHWAY NO. 1
G-43
CULVERT SECTION
STA. 24+30 MAPLE GROVE ROAD

Designed	Drawn	Traced	Checked	Reviewed Date	Revised
F.A.N.	T.P.	K.L.G.	L.S.I.		