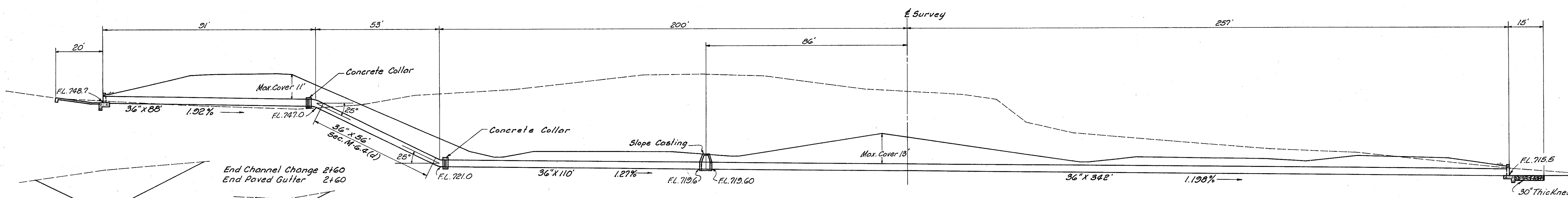


Area = 24.8 Acres  
Q<sub>50</sub> = 47 C.F.S.

Headwater = 3.84'  
Outlet Velocity = 9.9 F.P.S.

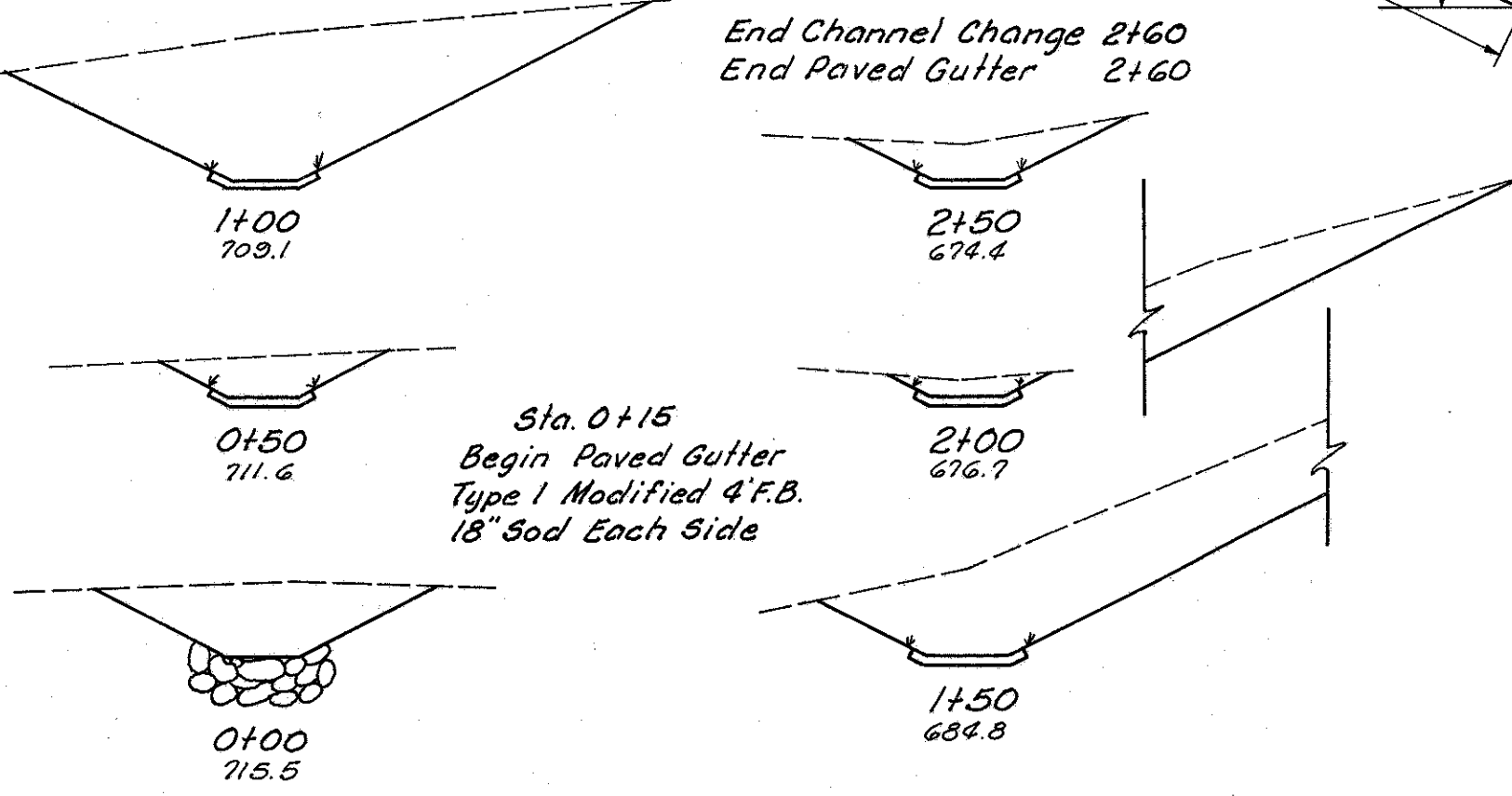


**ESTIMATED QUANTITIES**

E-2	Excavation for Structures	935	Cu. Yds.
E-3	Channel Excavation	757	Cu. Yds.
S-1	Concrete for Structures Class "C"	15.10	Cu. Yds.
S-4	Reinforcing Steel	688	Lbs.
S-27	36" Pipe for Roadway Culverts Sec. M-6.4(d)	56	Lin. Ft.
I-5	Pipe Specials 36" X 25° Bend M-6.4(d)	2	Each
I-10	Dumped Rock Channel Protection	11	Cu. Yds.
I-14	Paved Gutter Type 1 Modified 4' F.B.	288	Lin. Ft.
L-10	Sodding	57	Sq. Yds.
I-8	Std. No. 1 Manhole	1	Each
S-27	36" Pipe for Roadway Culverts M-6.6(b) or M-6.8(b)	540	Lin. Ft.

**CULVERT DATA**

TYPE: Pipe Culvert S-27, 56' Sec. M-6.4(d) & 540' Sec. M-6.6(b) or 6.8(b)  
Type "B1" Hdw's.  
SIZE 36" X 596"  
Note: For Hdw'l. Details see Sheet No. 263  
Payment for Collars shall be included in Unit Prices bid for Item S-27 pipe. Collar concrete shall be Class "E". Collar shall have a minimum length of 2 feet and a minimum thickness of 9 inches



OUTLET CHANNEL SECTIONS  
Scale: 1" = 10'

Scale: 1" = 20'  
CULVERT NO. LAK - 1-0239

MICHAEL BAKER JR., CONSULTING ENGINEERS  
ROCHESTER, PENNSYLVANIA

STATE OF OHIO  
DEPARTMENT OF HIGHWAYS  
STATE HIGHWAY NO. 1  
C-43  
CULVERT SECTION  
STA. 125+93

Designed	Drawn	Traced	Checked	Reviewed Date	Revised
F.A.N.	M.M.	K.L.G.	L.S.I.		