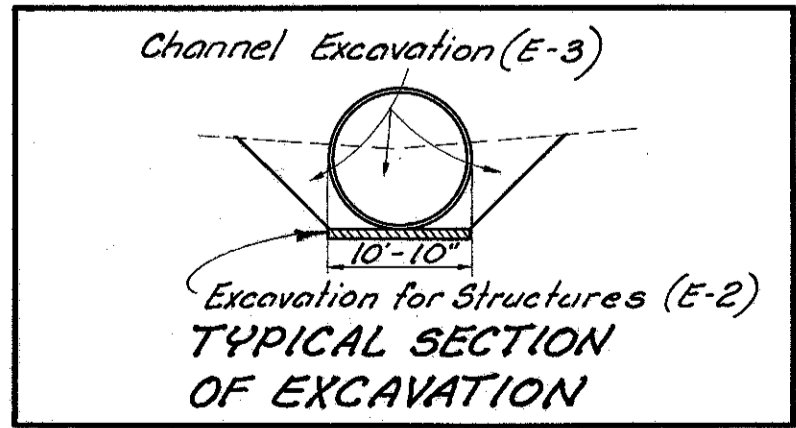
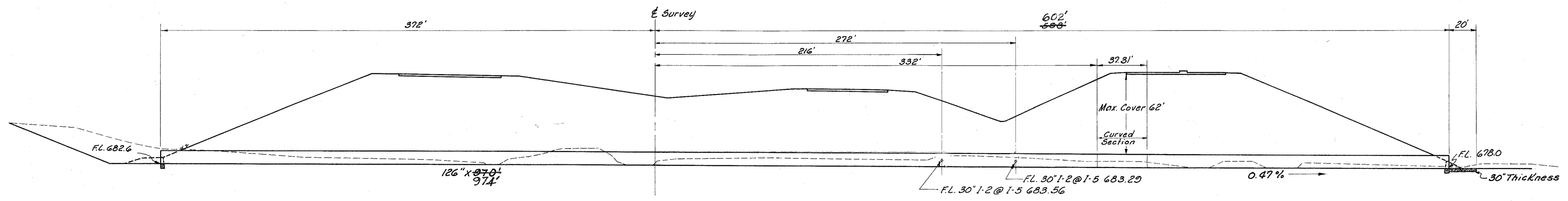
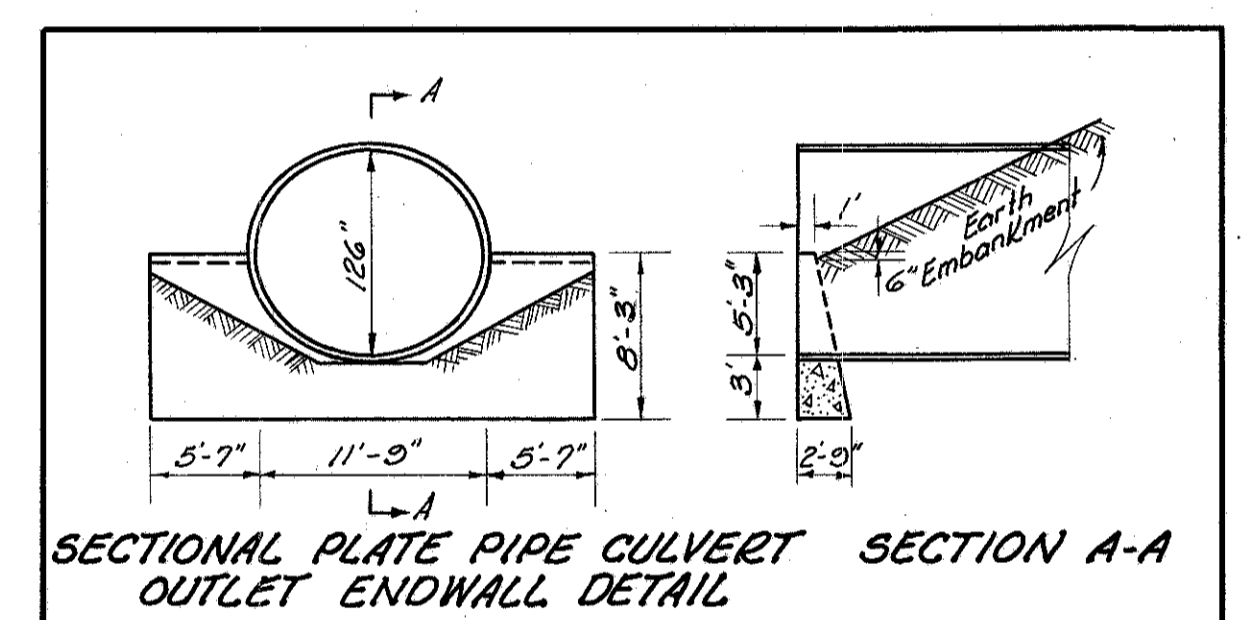


Area = 1475 Acres  
Q<sub>50</sub> = 750 C.F.S.

Headwater = 8.45'  
Outlet Velocity = 10.9 F.P.S.



**ESTIMATED QUANTITIES**

E-2	Excavation for Structures	298	Cu. Yds.
E-3	Channel Excavation	3,132	Cu. Yds.
S-1	Concrete for Structures Class "E"	20.39	Cu. Yds.
S-28	126" Sectional Corrugated Metal Structures	970.974	Lin. Ft.
I-10	Dumped Rock Channel Protection	56	Cu. Yds.
L-10	Sodding	50	Sq. Yds.

**CULVERT DATA**

TYPE: Pipe Culvert S-28, M-6.4(g) Gage 1-1. The Vertical Axis of the pipe shall be Elongated 3% by Field Strutting and Jacking or 5% in Shop Fabrication. 6 Bolts per Ft. See Notes Std. Dwg. SP-53. Headwalls shall be Type SP-53. Any and all costs connected with Radius Pipe shall be included in the unit price bid for Item S-28. Cost of stubs for 30" Connections shall be included in the unit price bid for Item S-28 (See Sheet 10)

SIZE: 126" x 970' 974"

Scale: 1"=40'  
CULVERT NO. LAK 1-0219

MICHAEL BAKER JR., CONSULTING ENGINEERS  
ROCHESTER, PENNSYLVANIA

STATE OF OHIO  
DEPARTMENT OF HIGHWAYS  
STATE HIGHWAY NO. 1  
C-43  
CULVERT SECTION  
STA. 115+46

Designed	Drawn	Traced	Checked	Reviewed Date	Revised
F.A.N.	M.M.	K.L.G.	L.S.I.		