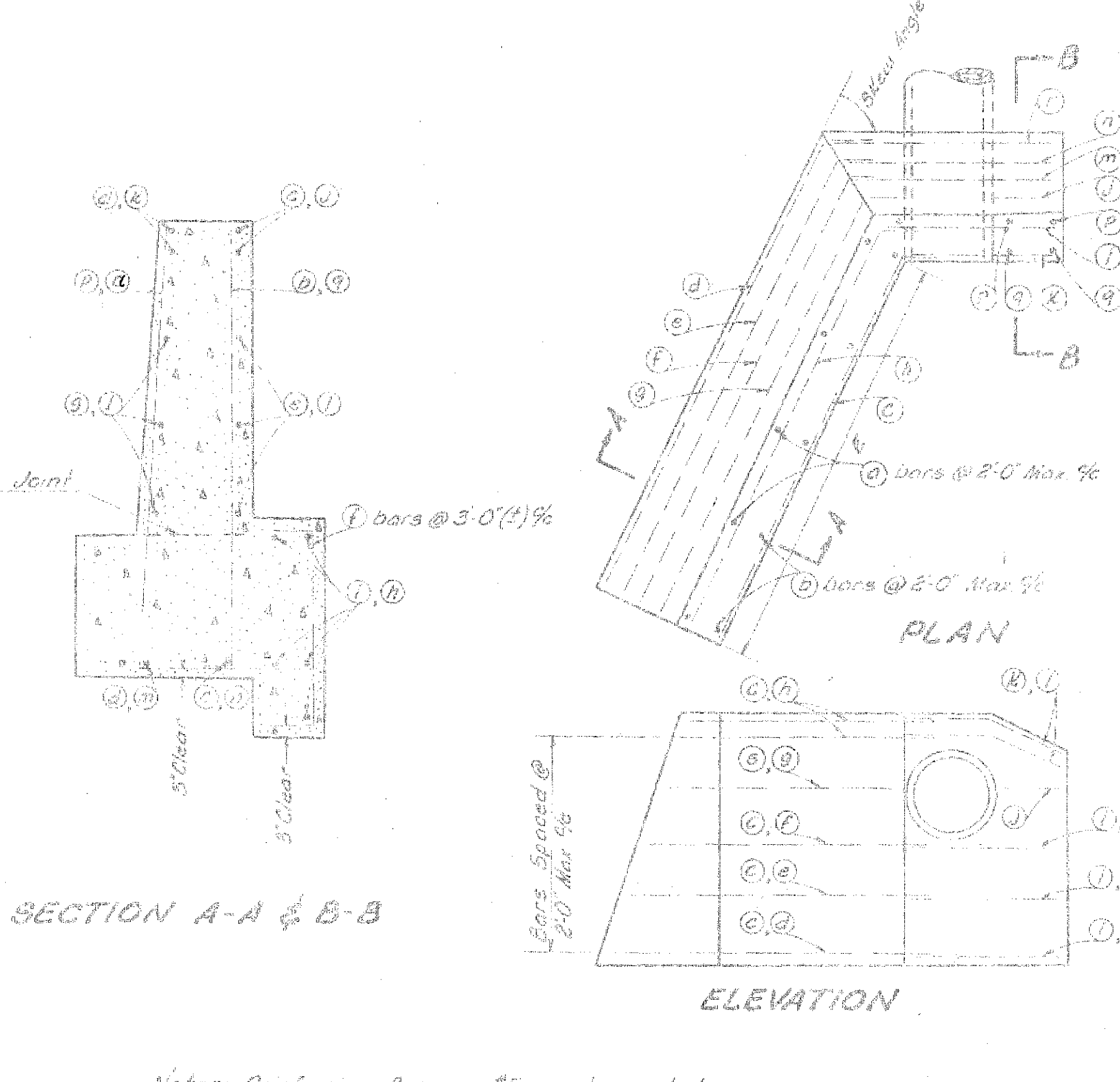
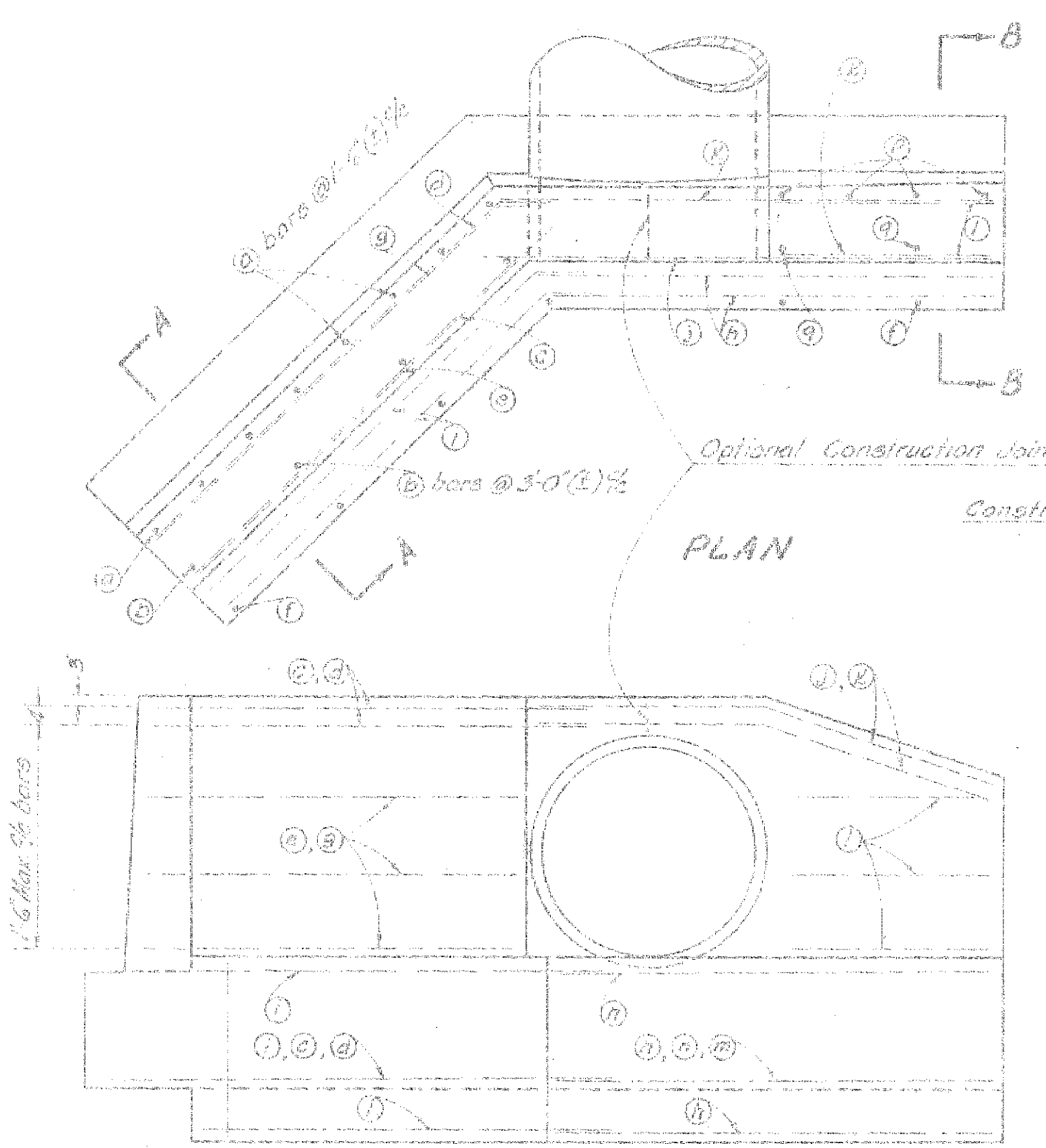
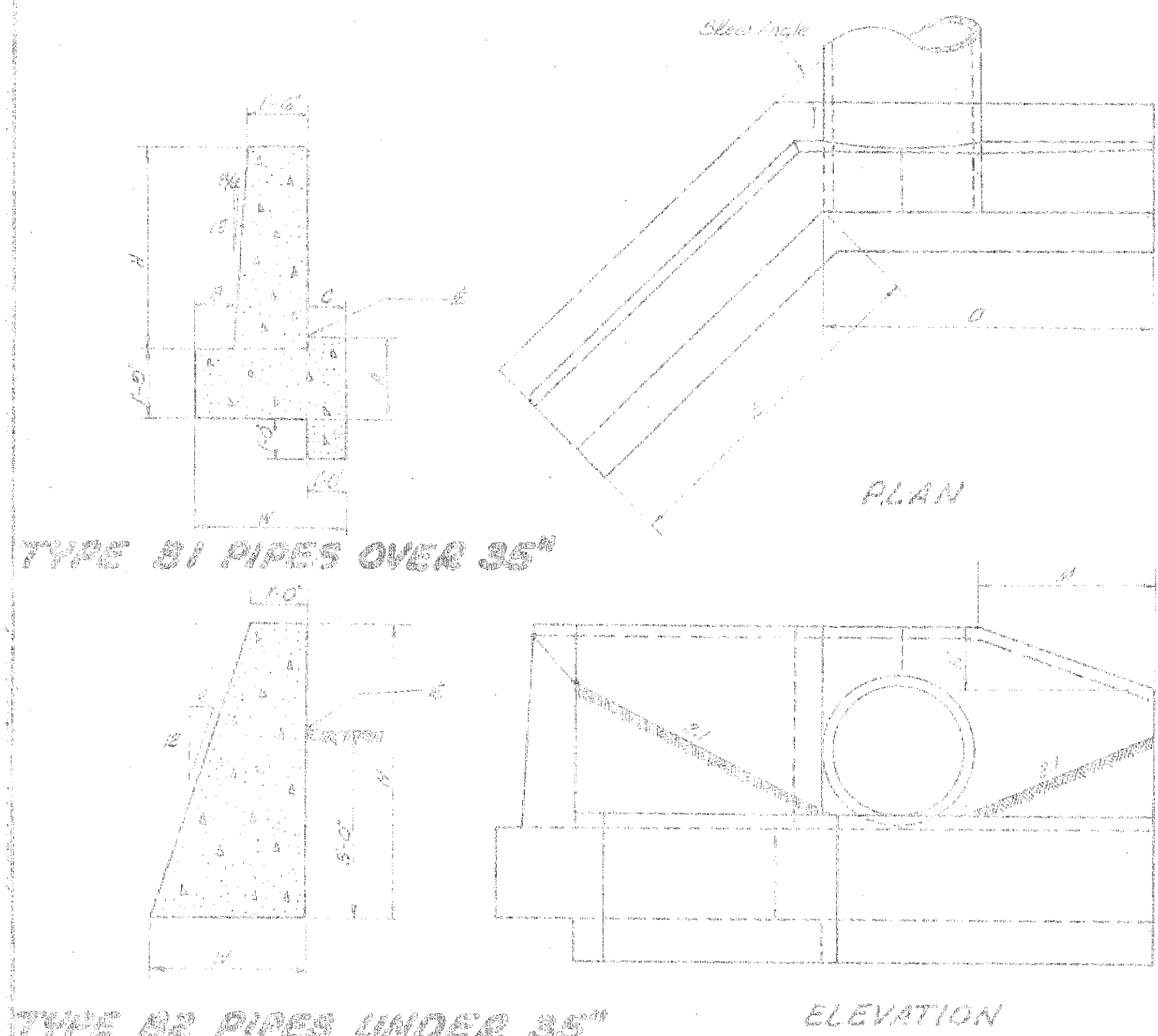


HEADWALL TYPE 'B' (QUANTITIES FOR ONE HEADWALL)

LAKE COUNTY
LAK-1-2.16

HEADWALL DIMENSIONS													REINFORCEMENT BAR SCHEDULE																		QUANTITIES--																			
Station	Grade	Pipe Size	Type	H	W	A	B	C	D	E	M	N	No.	Length	No.	Length	No.	Length	No.	Length	No.	Length	No.	Length	No.	Length	No.	Length	No.	Length	No.	Length	Reinf. Steel Lbs.	Concrete Cu. Yds.																
110+74 Lt.	Ramp A 41+30 Lt.	30"	B-2	6'-6"	3'-2"				5'-6 1/2"	6'-10 1/4"	2'-5 1/2"	1'-3 1/2"	4	6'-4"	4	6'-0"	4	8'-3"	1	9'-4"	1	9'-1"	1	7'-10"	1	7'-5"	2	6'-11"	2	5'-5"	2	2'-2"	2	5'-7"	2	5'-9"	1	5'-10"	1	6'-0"	2	1 each @ 6'-2" & 5'-3"	2	1 each @ 5'-10" & 6'-5"	1	6'-5"	1	6'-8"	224	6.3
125+93 Lt.	23' Lt.	36"	B-1	4'-6"	3'-6"	2'-1"	0'-0"	1'-0"	7'-0"	6'-4"	4'-1"	0'-10 1/2"	5	8'-3"	3	6'-2"	3	7'-8"	3	8'-1"	3	6'-1"	5	3'-7"	3	6'-6"	5	7'-5"	5	7'-7"	2	7'-11"	2	8'-3"	6	3'-7"	1	7'-11"	1	7'-6"	3	1 each @ 8'-3" & 7'-5"	2	1 each @ 5'-0" & 4'-9"			356	7.1		
125+93 Rt.	17' Lt.	36"	B-1	4'-6"	3'-6"	2'-1"	0'-0"	1'-0"	8'-1 1/4"	6'-1 1/2"	4'-5 1/4"	0'-8 1/4"	5	8'-3"	3	6'-2"	3	7'-5"	3	7'-10"	3	5'-10"	5	3'-7"	3	6'-3"	5	7'-0"	5	7'-4"	2	8'-3"	2	8'-7"	6	3'-11"	1	8'-3"	1	7'-10"	3	1 each @ 8'-3" & 7'-11"	2	1 each @ 5'-9" & 5'-11"			358	7.1		
150+28 Rt.	23' Lt.	72"	B-1	7'-2"	5'-8 1/2"	1'-11"	1'-7"	2'-2"	12'-5 1/2"	13'-0 1/2"	6'-1 1/2"	2'-8"	10	12'-3"	5	9'-3"	3	14'-11"	3	15'-5"	4	12'-0"	3	4'-7"	4	13'-3"	5	12'-3"	5	14'-11"	2	13'-0"	2	13'-5"	6	5'-0"	1	12'-10"	1	12'-4"	5	1 each @ 12'-2" & 11'-7"	3	1 each @ 8'-5" & 7'-0" & 5'-10"			1,482	20.0		
161+04 Rt.	14' Rt.	54"	B-1	5'-8"	4'-0"	1'-11"	1'-3 1/4"	1'-7 1/2"	10'-7"	8'-0 1/2"	5'-0"	1'-4 1/2"	7	10'-2"	4	7'-0"	3	10'-1"	3	10'-4"	3	8'-6"	6	4'-1"	3	8'-0"	5	10'-3"	5	10'-1"	2	10'-10"	2	11'-0"	6	5'-3"	1	10'-6"	1	10'-4"	3	1 each @ 10'-0" & 9'-6" & 8'-11"	2	1 each @ 6'-10" & 5'-3"			409	12.0		
Ramp C-D 0+47 Lt.	14' 15' Lt.	54"	B-1	5'-8"	4'-0"	1'-11"	1'-3 1/4"	1'-7 1/2"	9'-2"	8'-0 1/4"	4'-4"	2'-1"	7	10'-2"	4	7'-0"	3	10'-1"	3	10'-4"	3	8'-6"	6	4'-1"	3	8'-0"	5	8'-10"	5	10'-1"	2	10'-1"	2	10'-3"	6	4'-6"	1	9'-1"	1	8'-11"	3	1 each @ 10'-0" & 9'-1" & 8'-2"	2	1 each @ 6'-10" & 4'-11"			470	12.0		
Ramp C-D 0+47 Rt.	14' 15' Lt.	54"	B-1	5'-8"	4'-0"	1'-11"	1'-3 1/4"	1'-7 1/2"	9'-2"	8'-0 1/4"	4'-4"	2'-1"	7	10'-2"	4	7'-0"	3	10'-1"	3	10'-4"	3	8'-6"	6	4'-1"	3	8'-0"	5	8'-10"	5	10'-1"	2	10'-1"	2	10'-3"	6	4'-6"	1	9'-1"	1	8'-11"	3	1 each @ 10'-0" & 9'-1" & 8'-2"	2	1 each @ 6'-10" & 4'-11"			470	12.0		

☒ Use No. 7 Bars



Notes: Reinforcing Bars are #5 except as noted.
All other notes and details not shown on this sheet will conform to Standard Headwalls 1 & 2.

MICHAEL BAKER JR., CONSULTING ENGINEERS
ROCHESTER, PENNSYLVANIA

STATE OF OHIO
DEPARTMENT OF HIGHWAYS

STATE HIGHWAY NO. 1
C-43

TYPE "B" HEADWALLS

Designed	Drawn	Preced	Checked	Reviewed Date	Revised
F.A.N.	A.L.H.	K.G.	L.S.I.		