

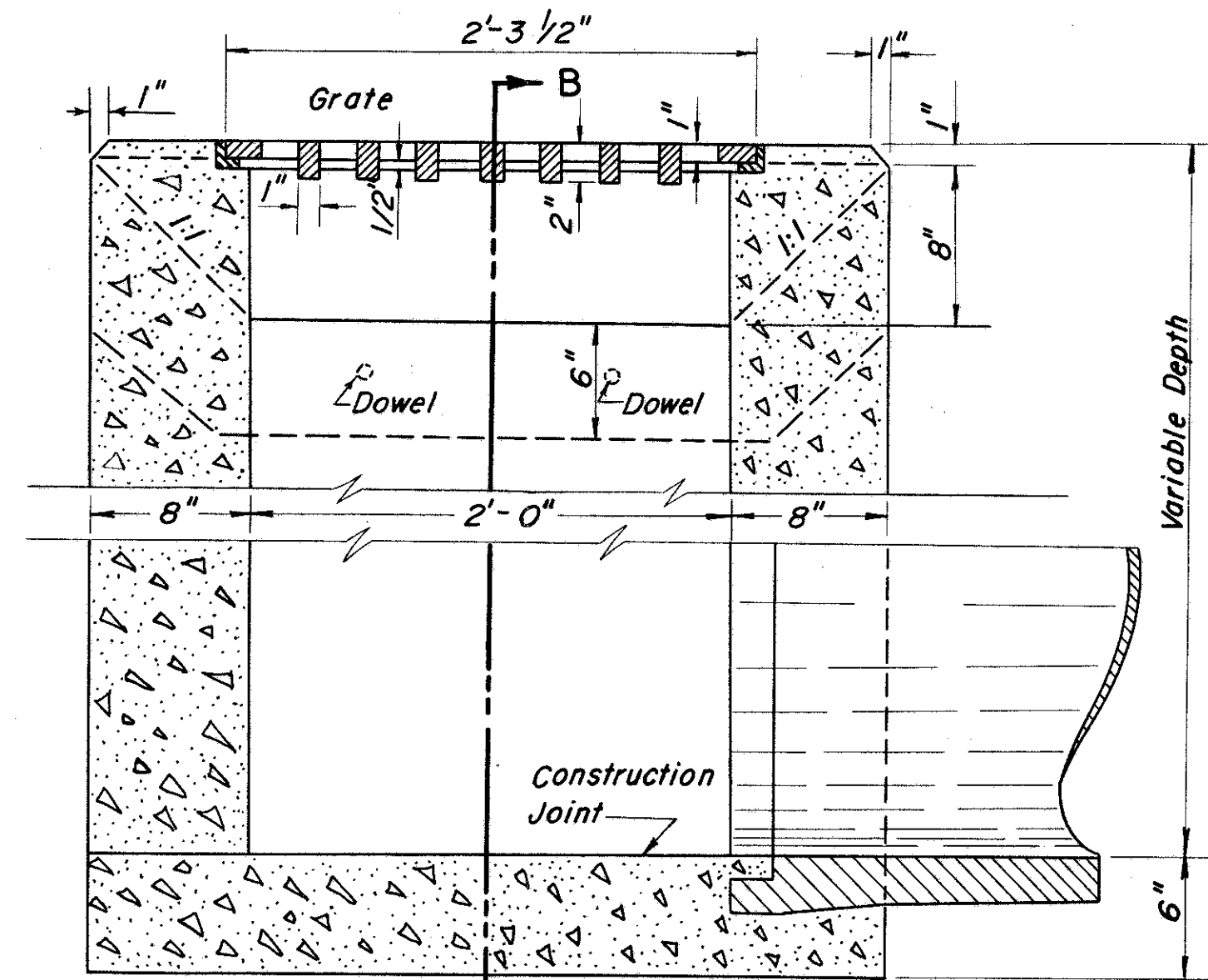
# MODIFIED STANDARD No. 2-2-A CATCH BASIN with MODIFIED TYPE I PAVED GUTTER

FED. RD. DIVISION	STATE	PROJECT	
2	OHIO	I-1103 (19)	

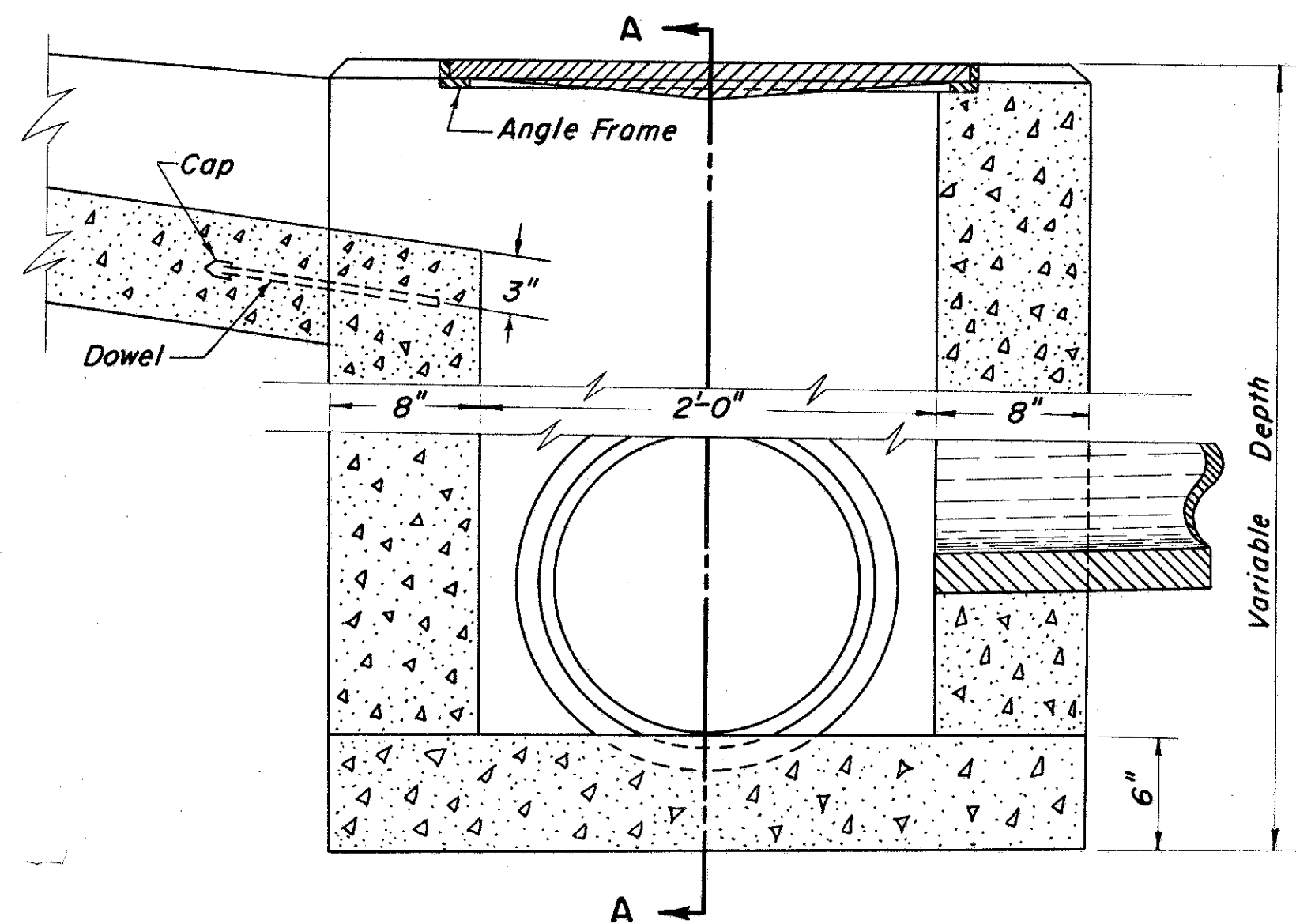
261  
3/2

LAKE COUNTY  
LAK-1-2.16

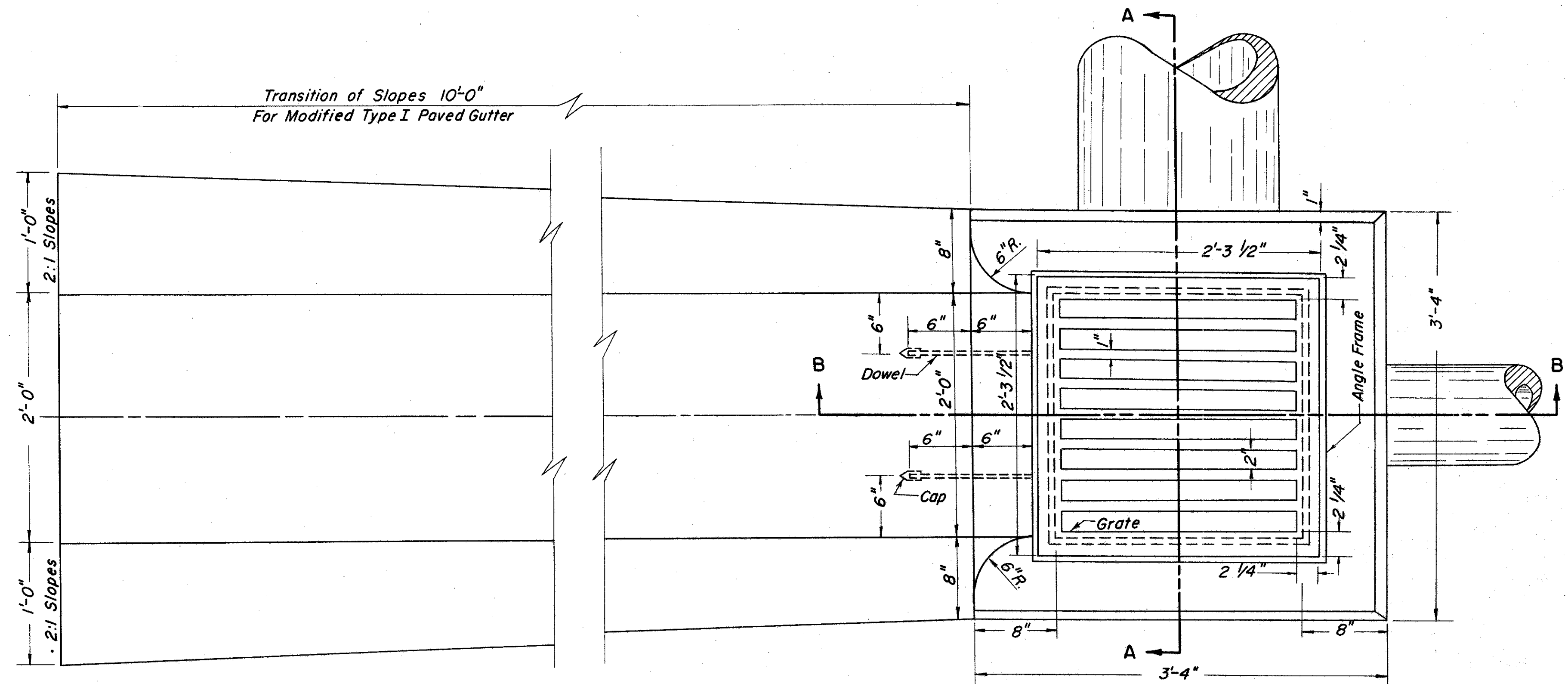
NOTE:  
SHEET 260 OMITTED



SECTION A-A



SECTION B-B



PLAN

NOTES:  
Unless otherwise shown Details and Notes shall conform to STANDARD DRAWING No. 1-8 C.B. 2-2-A  
Side Inlets and Paved Gutter shall be provided on both sides of the No. 2-2A Catch Basin in Sags  
Dowels to be 1" round smooth bars 12" long, spaced as shown  
Cost of the 10' of Type I Paved Gutter as shown in this detail shall be included in the unit bid for the Catch Basin.

MICHAEL BAKER, JR., CONSULTING ENGINEERS  
ROCHESTER PENNSYLVANIA

STATE OF OHIO  
DEPARTMENT OF HIGHWAYS  
STATE HIGHWAY NO. 1 - C - 43  
MODIFIED STD. NO. 2-2-A CATCH BASIN  
WITH MODIFIED TYPE I PAVED GUTTER

Designed	Drawn	Traced	Checked	Reviewed Date	Revised
L1	ALH	A.L.H. B.M.	F.A.N.		